

S. T. I.
Studio Tecnico Industriale
per.ind. BUSO GIUSEPPE
Pizza A.Moro, 2 - Tel.0422/919383
L A N C E N I G O (TV)

Barbieri
Thriller Fun House
Kiddie

N. 014/STI - 89 DD. JUNE 1st, 1989

INSPECTION REPORT (Not binding translation of)

Effected on the portable equipment for carnival purposes named "THRILLER" HAUNTED HOUSE, manufactured by Officine Barbisan snc, Lovadina di Spresiano (TV) Italy.

Upon request of Officine Barbisan snc, Lovadina di Spresiano (TV) Italy, the undersigned Giuseppe Buso, Industrial expert, inscribed in the board of industrial experts of the districts of Venezia and Treviso, as well as inscribed in the board of Industrial experts and consultants at the court of Treviso, has proceeded, in the presence of Mr. Barbisan Mauro for Officine Barbisan snc, to the following inspections of the aforementioned equipment.

INTRODUCTION

The part 1 of this report regards the inspection of the travelling vehicle. Part 2 regards the inspection of the safety devices of the equipment, once it is set at work.

PART 1

1) GENERAL FEATURES

1.1 - IDENTIFICATION OF THE EQUIPMENT

The equipment, subject of this report, consists of a 2-axle semitrailer - Mod. ZORZI 28S140/19 +U.E.+ , marked with code ZAX28S14019000086, stamped on the right side sill in the front of the vehicle. When travelling, the vehicle appears as a closed structure, while it forms a castle designed structure when set-up in the midway.

1.2 - DIMENSIONS OF THE SEMITRAILER

The dimensions of the vehicle are the following:

- Overall length mm. 14700 (about 48 Ft.)
- Distance between virtuale axle and 1st axle mm. 864 (about 3 Ft.)
- Distance between 2 consecutive axles mm. 1360 (about 4.5 Ft.)
- Rear overhang mm. 3350 (about 11 Ft.)

- Max. width mm. 2500 (about 8.2 Ft.)
- Max. height mm. 4000 (about 13 Ft.)

1.3 - SEMITRAILER BODY

Truck with moveable walls and raising front, with outer panoramic walk indoor, it is formed by walkways, which are provided with fun devices, separated by partition walls.

1.4 - DIMENSIONS OF THE EQUIPMENT, INCLUDING SEMITRAILER, WHEN SET AT WORK.

The dimensions of the equipment when set at work are the following:

- Overall length mm. 21800 (about 71.5 Ft.)
- Overall width mm. 4000 (about 13 Ft.)
- Overall height mm. 8000 (about 28 Ft.)

PART 2.

The attraction consists of a 70m. long walkway, part indoor and part outdoor, with several height and level variations. The amusements is given by flashing coloured lights, by opening and shutting doors, by noises and sounds, and by horror figures. The walkway consists of: the entry place, the departure, a spiral stairway to lead people to the roof, the way down to lead inside the castle, the exit.

3.0 INSPECTION OF OLEODYNAMIC AND PNEUMATIC SYSTEMS

3.1 - OLEODYNAMIC SYSTEM

The hydraulic cylinders for the raising of back wall and front of the attraction, are controlled manually by means of handle distributors. The system is protected by safety valves which secure the stability of moving parts in case of breakdown or oil pressure drop.

4.0 - PNEUMATIC SYSTEM

The pneumatic system consists of 2 compression heads Mod. SHAMAL K50 and of air tank Mod. SICC ESONERI ISPEL 190714-2287/89, max pressure 12 bars. The equipments controlled by the pneumatic system are: doors, blowers and some horror figures. The different movements are made possible by solenoid valves. Should the system be unserviceable, the attraction cannot be set at work.

4.1 - ACCESS

The access of people to the attraction is forced by floor plates and walkways protected by fences and handrails. The access flooring is made of antislippery embossed aluminium plates.

4.2 ADDITIONAL PROTECTIONS

The attraction is provided, at the exit, with a pneumatic door. In case of breakdown of the pneumatic system, such door can be opened manually. The attraction is moreover provided with 2 emergency exits, located at the edges of the indoor walkways. Such exits are indicated by the sign "EXIT". The related doors are provided with antipanic opening device. Along the indoor walkway, there are canvas made of fire retardant fabric Ref. PRECONTRANT 552/2 n.1122/1/2/3/4 del 06.12.1988 (photocopy of original certificate is enclosed). The indoor walkway is divided by partition walls in fire retardant wood, Ref. "MORALT PYROEX" n. 38/16/87, n.38/11/87, n.38/13/87, 38/12/87, 38/15/87, 38/14/87, 38/9/87 (photocopy is enclosed).

5.0 SPECIAL INSTRUCTIONS

Before allowing admittance to people, the attraction should be provided with at least 4x10 -LBS- extinguishers, to be placed in easily accessible areas and clearly visible. The attraction operator will have to take care of their installation.

The equipment is and must be provided with stairways from the emergency exits down to the ground, thus allowing people a safe way out. A plate prohibiting smoking and lighting of fires within the attraction area and nearby, should be placed near the ticket counter and entry.

6.0 After the aforementioned inspections, the attraction is stated to have the proper service requirements to be allowed to public operation. With this report, the undersigned industrial expert Giuseppe Buso, does not assume any responsibility for materials, construction, dimensions, accessories other than the ones indicated in this report and its enclosures. This report will be effective on the condition that periodic overhauls aimed at maintaining the efficiency of the safety devices are effected. The workshop effecting the said overhauls, will have to stamp and sign the following page, indicating dates of each overhaul operation. The foreman of the equipment will have to take care of checking the integrity of the electric system components as well as the efficiency of the protection devices at every setting at work of the mobile electric parts.

Also, this report will be effective on the condition that no modification is effected to the equipment today inspected, unless authorized with written notice by Officine Barbisan snc.

Any authorized modification will have to be indicated in the present report as well as provided with liability statement by the workshop effecting the working. Any modification will have to be inspected by competent engineer, qualified for practicing of the profession in

Italy and inscribed in the profession board in Italy.
This report and its enclosures can be reproduced only in their
integral version.

The manufacturer

The engineer

CARNYTOWN.COM

S P E C I F I C A T I O N S

Model : "THRILLER" 070-D-19R
Dimensions : Ft. 69x13x28 (mt. 21,8x4x8,5)
Waight : 39700 pounds (Kg.18000)
Long walkway : Ft. 230 (mt.70)
Electrical power : Kw.20
Capacity per hour : 1000 people
Set-up time : 2 man/4 hours
Maximum capacity : 300 people

ADVISES

- Maximum waight : 260 pounds per person
- People taller than 6'7" should pay special attention at certain points of the track marked with the sign "Danger".
- No high heels
- No umbrellas or similar
- No clogs
- No house shoes
- No barefoot

RESTRICTIONS

- No smoking

CARNY TOWN.COM

ELECTRIC SYSTEM

=====

DESCRIPTION

The electric system originates from the connecting terminal board located inside a connector block on the left side of the semitrailer.

From such connector block, the feeder line to the main switchboard located inside the ticket counter, is shunted. From the main switch of the above mentioned switchboard, a 50 KW Autotransformer is feeded. This Autotransformer allows tension changes according to the local grid.

The Autotransformer has 4 terminals and each one of them indicates a different tension. The tension change can be effected by connecting the feeder line to the correspondent terminal according to the local tension.

On the front of the main switchboard, is located the main switch with built-in circuit breaker, as a protection of the line which controls the hydraulic pump for the setting up and levelling of the attraction.

~~Near the above mentioned pump, there is a switch with built-in motor protector and reverser which is needed to reverse the direction of hydraulic pump motor rotation in case feeding is reversed. An additional reverser is located on the main switchboard and allows reversing of all inner motor rotations.~~

THE GROUND TERMINAL IS LOCATED NEAR THE CONNECTOR BLOCK.

IT IS COMPULSORY TO CONNECT IT TO AN EFFICIENT
GROUNDING SYSTEM.

THE MANUFACTURER DECLINES ALL RESPONSIBILITY IN CASE
OF INOBSERVANCE OF ABOVE INSTRUCTION.

CARNYTOWN.COM

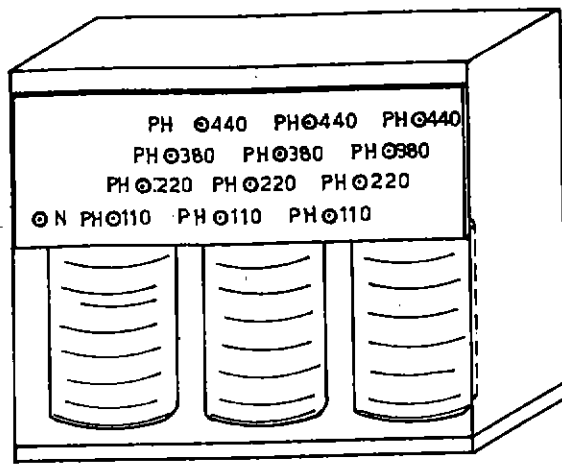
PERIODIC INSPECTION

- One month after the first setting at work, all terminals and in particular the following ones, should be properly tightened:
 - terminals located in the main switchboard
 - terminals of switches
 - terminals of thermic relays
 - terminals of different relays
 - terminals of the lamps
 - etc.
- This procedure is to be repeated each 6 months approx. Make sure that it is effected with power off.
- At every day opening, emergency lights should be properly checked and efficiency tested.
- Each 4 months, attraction should be switched of, thus setting emergency lights at work, in order to check their autonomy. Should autonomy of any light be less than 1 hour, its battery has to be replaced.
- Each 6 months, the contacts of the power-meter located inside the main switchboard should be checked and cleaned with suitable product. Should said contacts prove to be particularly worn, they have to be replaced by original spare parts.
- + Periodically, dust should be wiped off from the Autotransformer and air slits properly checked.
- In case of fire in the electric system or nearby, do not use water ! Just make use of extinguishers suitable for electric systems. Do not use powder extinguisher !
- It is recommended that any operation is effected by trained and skilled personnel only and with power off.

FEATURES OF THE FEEDING SYSTEM

- FEEDING: 110/220/380/440 V 3 PHASE (THROUGH AUTOTRANSFORMER)
- TENSION CHANGE: BY CHANGING CONNECTIONS ON THE AUTOTRANSFORMER TERMINALS
- AUTOTRANSFORMER POWER: 50 KW
- FEEDING CONDUCTORS: MMQ 70 (mmq = square millimeters)
- SOCKETS LOCATED INDOOR: SCHUKO TYPE, 10A/110 V
- ELECTROMAGNETIC SWITCH COIL FEEDING: 24 V THRU 29 V
- LAMP FEEDING: 220 V

CARNYTOWN.COM



IMPORTANT NOTICE

The 50 KVA 3-Phase autotransformer is needed to feed the entire attraction.

It can be feeded with following tensions:

440 V	-	3 phase
380 V	-	"
220 V	-	"
110 V	-	"

Connect the 3 feeding lines to the autotransformer terminals indicating the feeding locally available.

5. ELECTRIC CONNECTION AND LEVELLING OF THE ATTRACTION (Picture N.3)

a) Electric connection.

The first thing to do, after getting to the fairgrounds, is the connection of the feeding wire. By opening the door located along the left side of the semitrailer, you will have access to the block containing the terminal board " A ". Have the feeding wires come through the hole in the block and connect them to the proper terminal as shown in the picture.

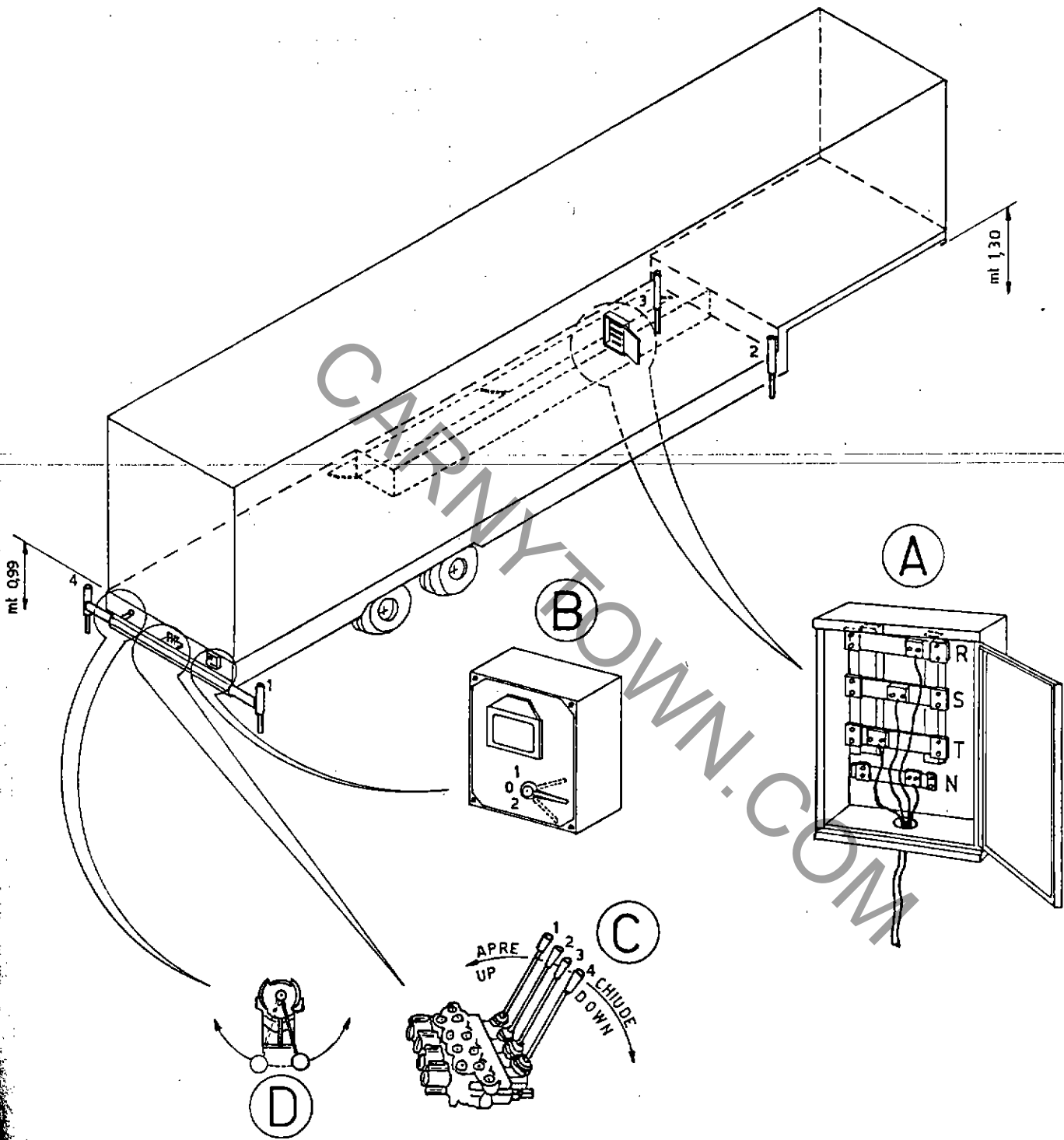
b) Hydraulic system ignition

To have access to the hydraulic system controls, open the door of the box located in the rear of the semitrailer. The hydraulic pump control is located inside the box (see picture B). Set handle in the position 1. Should hydraulic pump not work, set it in the position 2.

c) Trailer levelling

Take pins OFF. the levelling cylinders (1+2+3+4) and have cylinders slide out. Insert pins again when cylinders have reached the proper position. Turn handle D in the position as shown in the picture. This handle should be turned in the opposite position only when raising side towers of the attraction. Operating on the levers indicated with C, level the trailer until it reaches the perfect level position, making sure that the minimum distance between the ground and the chassis is 0.99 mt. (3,25 Ft.) in the rear and 1.30 mt. (4,25 Ft.) in the front. Then, turn taps located in the cylinders, OFF.

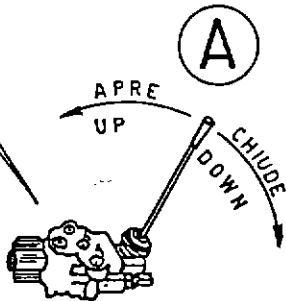
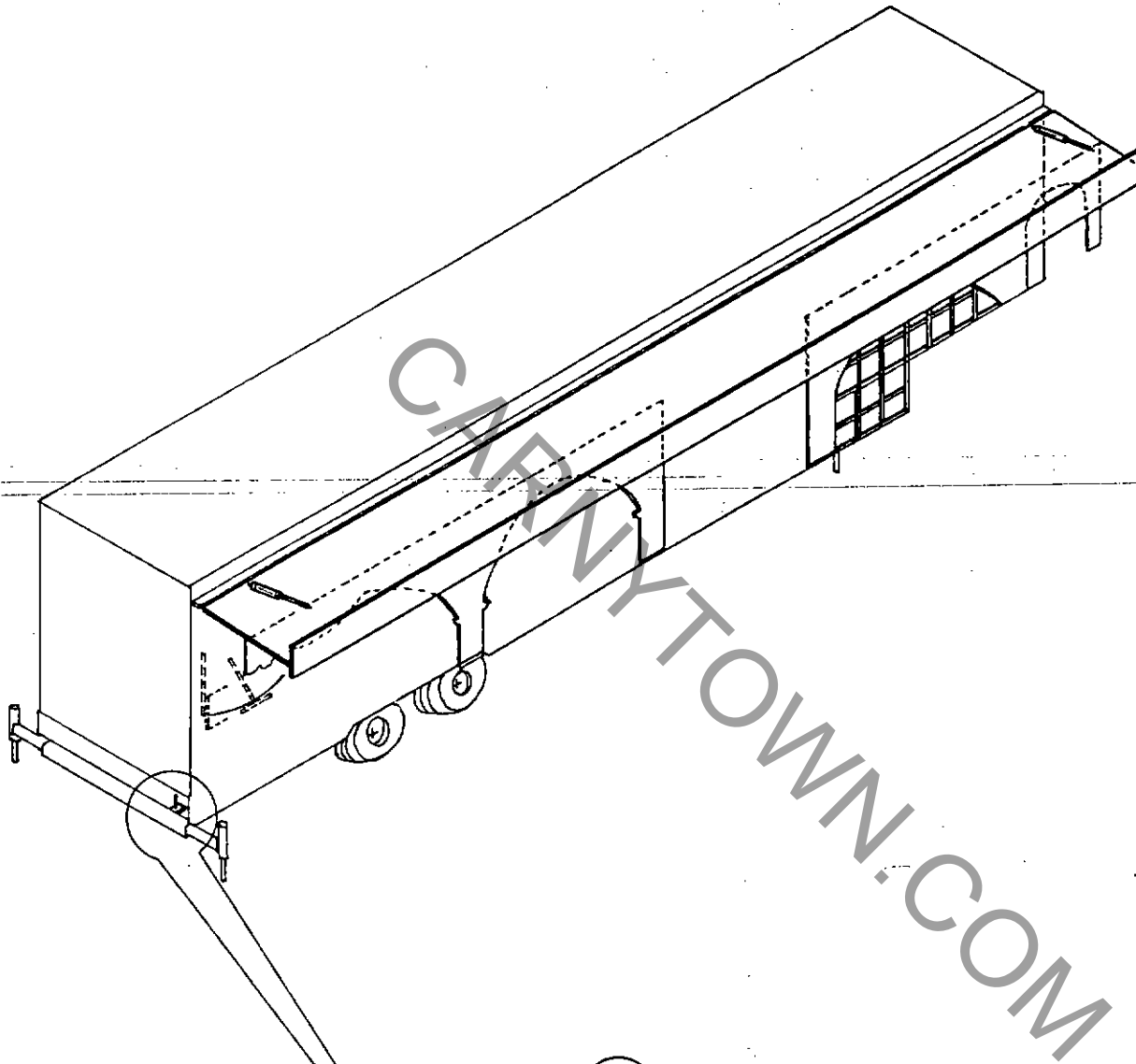
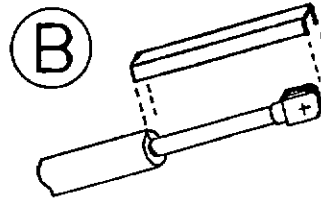
OWN.COM



6. FRONT RAISING (Picture N.4)

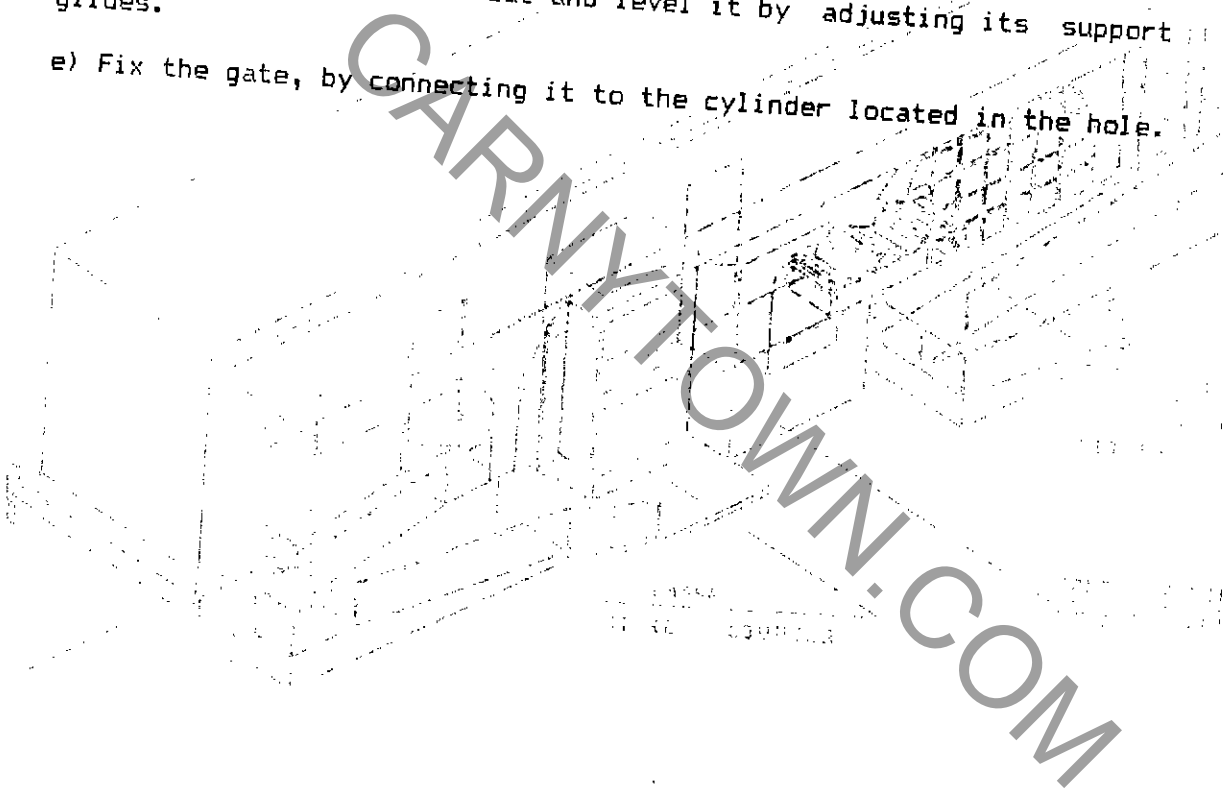
a) Operating the handle A, slightly raise front, position the designed anterior part and hook it as shown in the picture.
The proper position of the whole front is determined by a metal bracket which is to be placed on the cylinder stem indicated as B. By raising front, the position of the hooked lower panels will be automatically achieved.

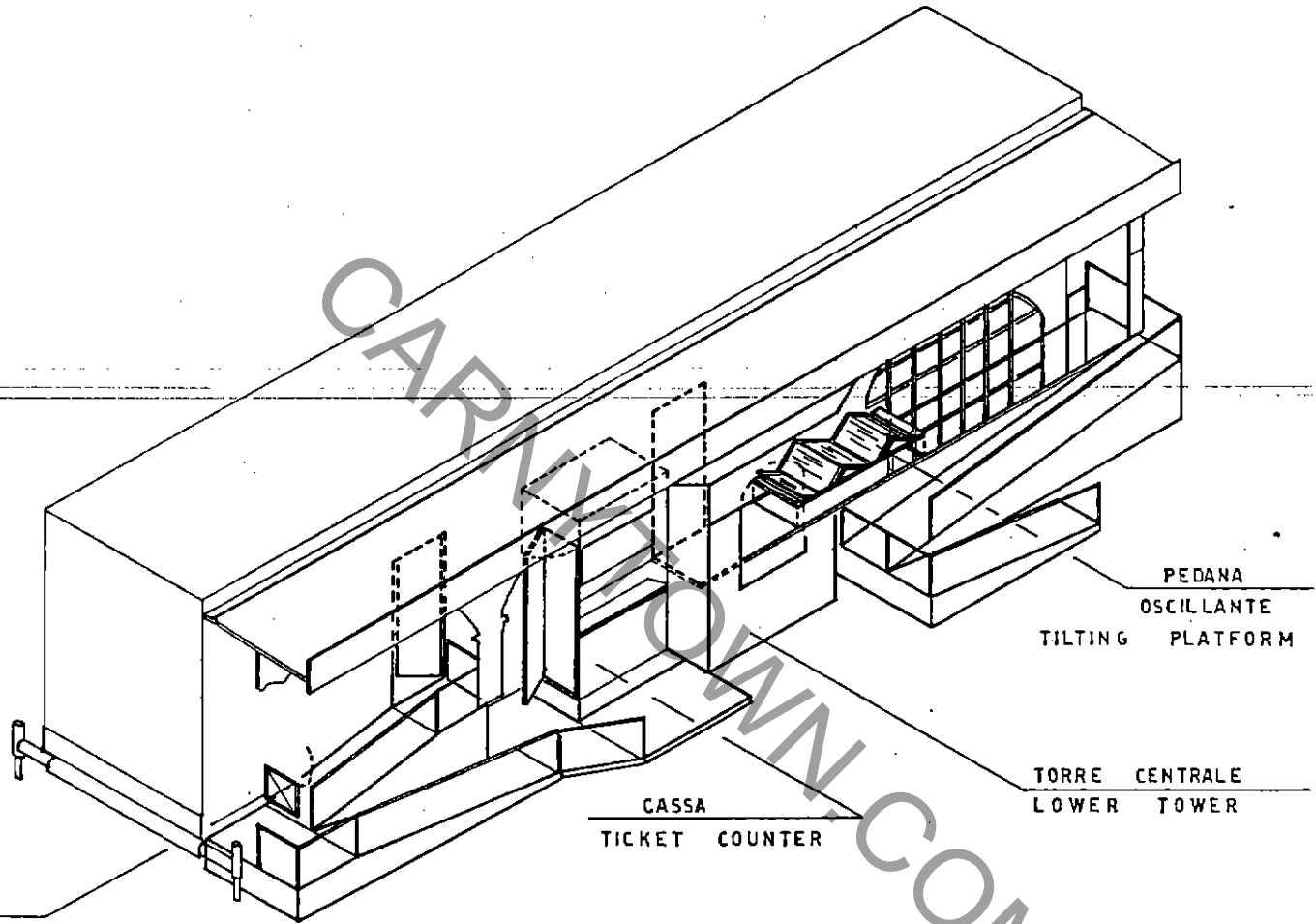
CARNYTOWN.COM



7. SETTING UP OF TICKET COUNTER, FLOOR PLATES, FENCES, LOWER TOWER, ENTRY AND EXIT TRICKS (Picture # 5).

- a) Extract ticket counter by sliding it out till it stops, open hooked floor plate, and place it in the proper position by adjusting its glides. Along the back side of the trailer (see picture # 3 marked as *) you will find the floor plates and related supports. Set them up and level, then fix floor plates to the proper joints.
- b) Fix the cylinders of the tilting plate trick by hooking the mechanism to the proper seats by the means of the proper pins.
- c) Install the fences and connect the blower hoses under the plate to the proper outlet.
- d) Have lower tower slide out and level it by adjusting its support glides.
- e) Fix the gate, by connecting it to the cylinder located in the hole.





LETTO
GATE

CASSA
TICKET COUNTER

PEDANA
OSCILLANTE
TILTING PLATFORM

TORRE CENTRALE
LOWER TOWER

8. SETTING UP OF SIDE TOWERS (Picture # 6)

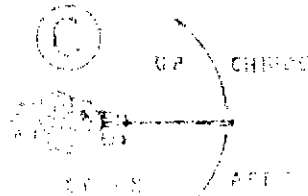
a) Raise back wall indicated as A from the trailer top, and secure same to the back wall lower part by means of the suitable props.

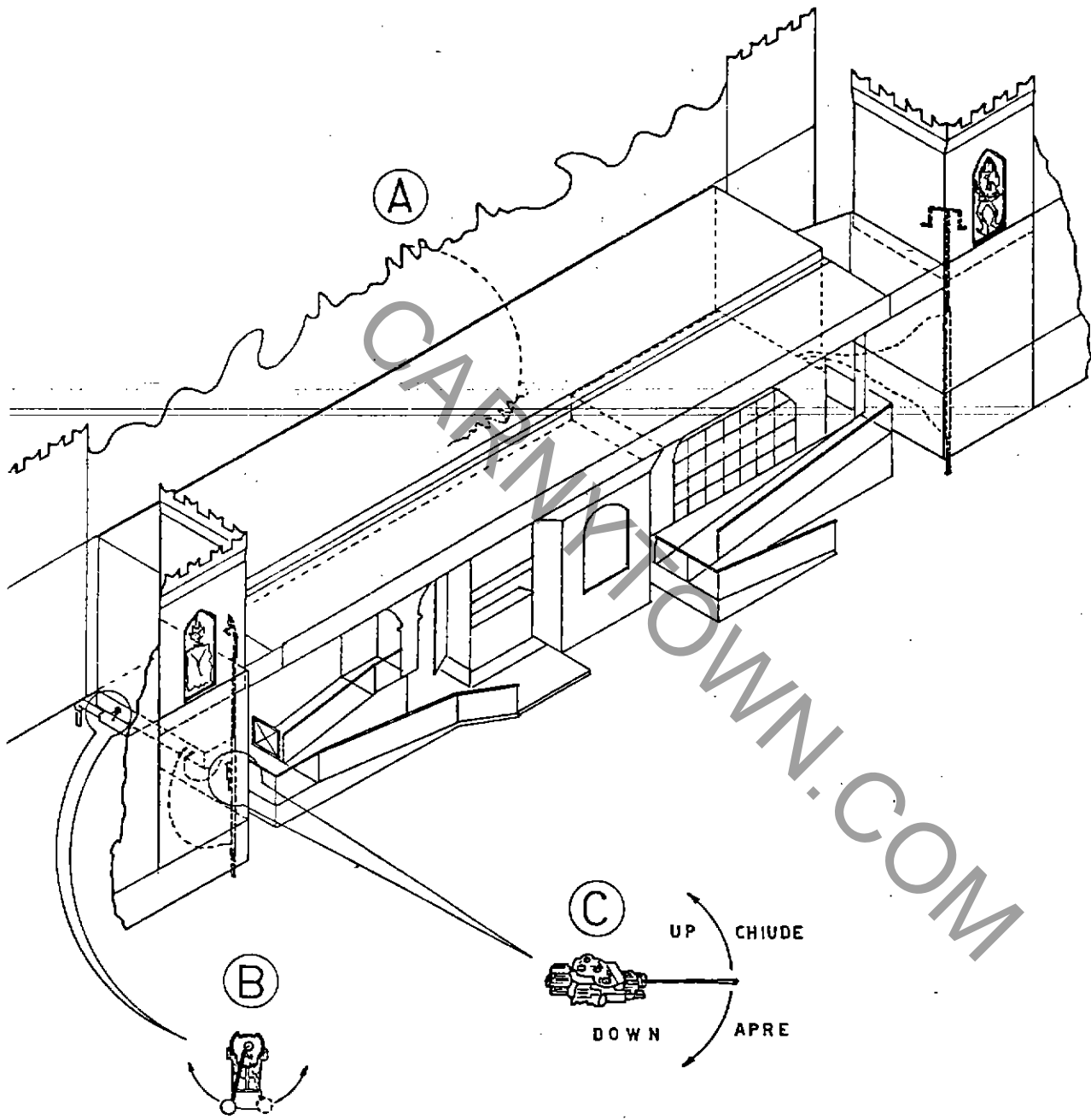
b) The unfolding of the side towers is to be effected gradually, by supporting panel by panel with the proper supports.

c) Place figures in the proper seats, connect their air hoses to the outlets. Fix ornamented tops on the towers.

d) Secure tower panels with the proper braces and make sure that handle B is set in the position as shown in the picture # 6. Position the hydraulic cylinder and secure the purposely made bracket on the tower rear loop. Then, raise tower panel operating handle C as shown in the picture.

e) Lock tower panel in the upper part and fix the lower part, with braces, as well effect same procedure for the tower located in the other side.





A

B

C

UP CHIUDE

DOWN APRE

- a) Install the plate panels which cover the spiral stairway.
- b) Operate handle B to raise the whole wall as shown in the picture. After completing this operation, the back wall will be secured by means of brackets to be fixed to the back wall rear.
- c) Position steps of both stairways as well as stairway fences to be inserted into their seats.
- d) Raise middle upper tower panel on the top of trailer and fasten it by means of the purposely made braces. Lift fences and lock them.
- e) To set sign up, just insert the support tubes into the proper seats located on the trailer top, and connect plugs.
- f) After completing all hydraulic movements, set hydraulic pump handle in the 0 position (see picture # 3 - point B). Lock the two doors (the ones located in the rear and at the side of the trailer).
- g) After this operation, the setting up of the ride is finished. To tear it down repeat same procedures the reverse way.

10085 10085 10085
UPPER 10085

CARNY-TOWN.COM

PANNELLI DI TAMPONAMENTO
CHIOCCIOLA
STAIRWAY PROTECTION PANELS

SCALINI
STAIRWAY

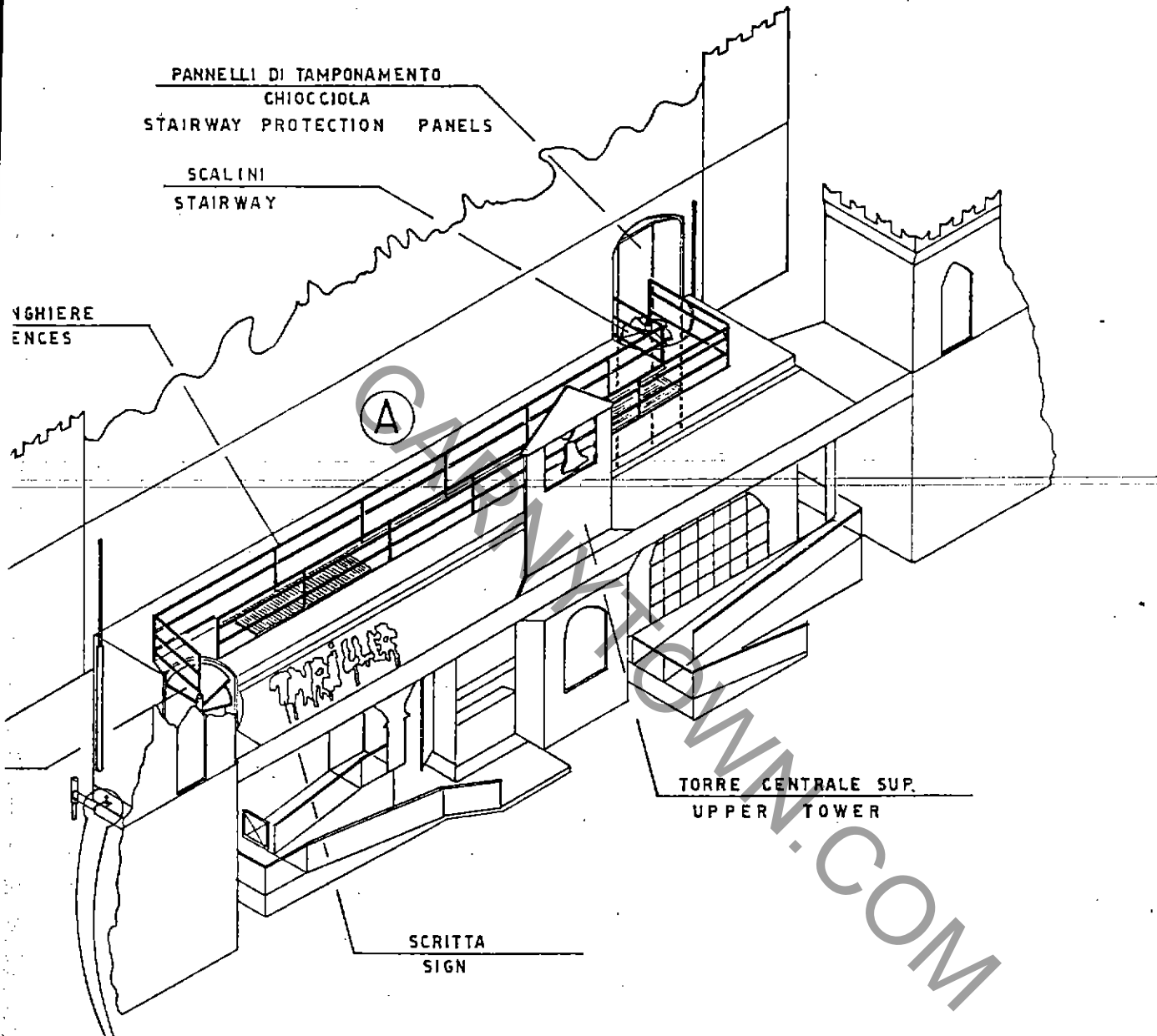
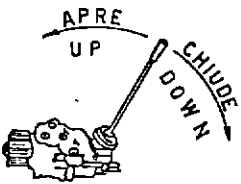
INGHIERE
ENCES

A

TORRE CENTRALE SUP.
UPPER TOWER

SCRITTA
SIGN

B



10. TABLE OF CONTROL SWITCHES LOCATED INSIDE THE TICKET COUNTER

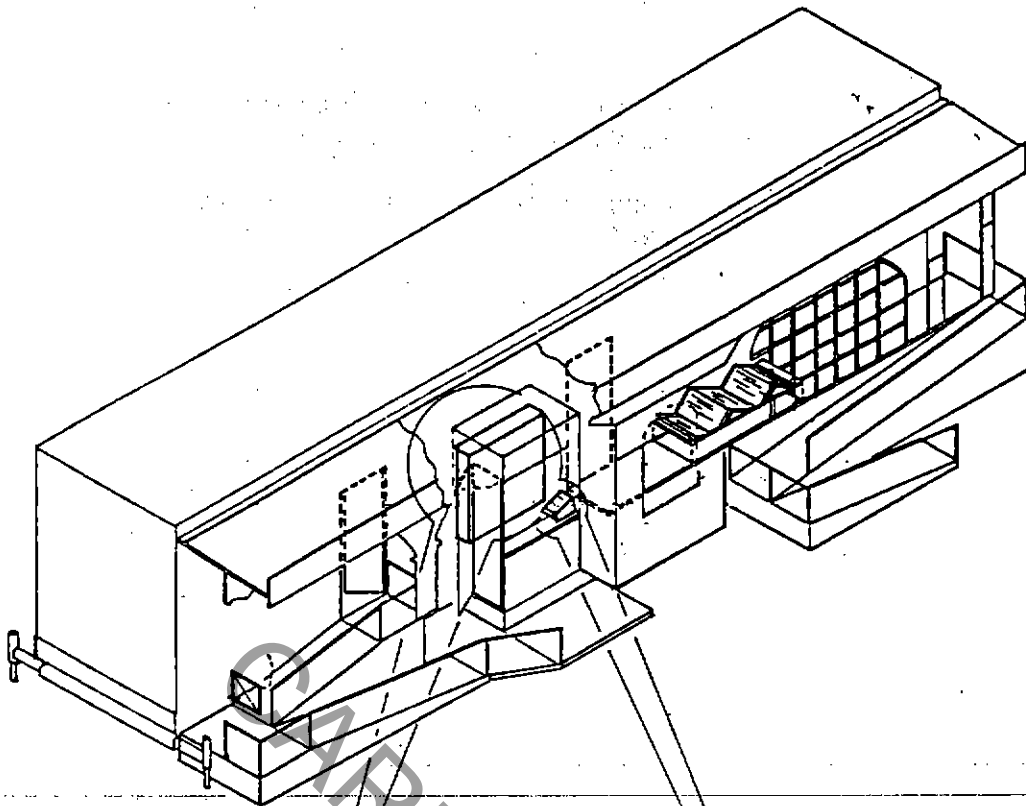
MAIN SWITCHBOARD A

SWITCHBOARD B

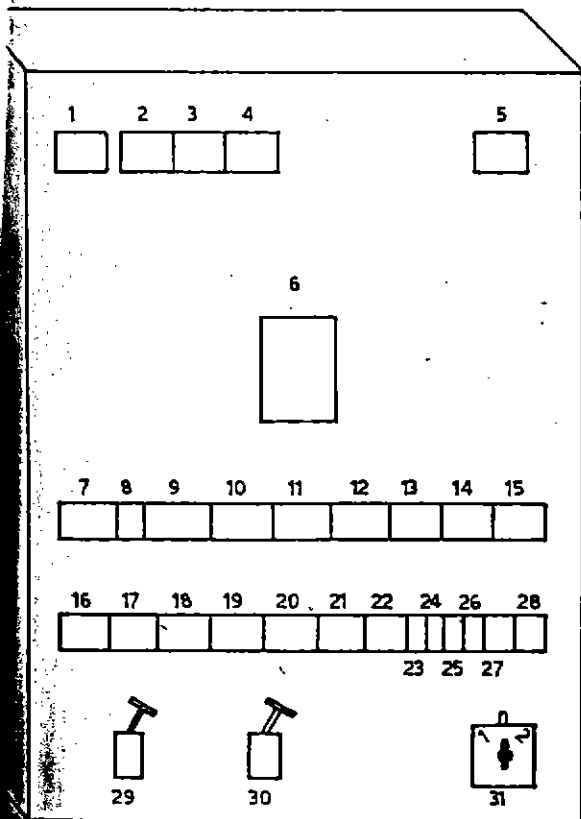
- 1) - Voltmeter switch
- 2) - Voltmeter
- 3) - Amperometer switch
- 4) - Amperometer
- 5) - Hydraulic pump switch
- 6) - Main switch
- 7) - Emergency light switch
- 8) - Emergency light release switch
- 9) - Inner service lighting switch
- 10) - 220 V Figures
- 11) - Front lighting
- 12) - Border lighting
- 13) - Sign lighting
- 14) - Headlights
- 15) - Motors
- 16) - Compressor 1
- 17) - Compressor 2
- 18) - Reserve
- 19) - Automatism main switch
- 20) - Service sockets
- 21) - 110 V socket
- 22) - 110 V socket
- 23) - Electromagnetic switch fuse
- 24) - Compressor fuse
- 25) - Figures fuse
- 26) - Reserve fuse
- 27) - Ticket counter reserve lighting
- 28) - Ticket counter lighting
- 29) - Gate closing handle
- 30) - Exit door closing handle
- 31) - Motor reserver

- 1) - Main switch
- 2) - Inner service lighting switch
- 3) - Figures
- 4) - Yellow lights
- 5) - Blue lights
- 6) - Red lights
- 7) - Border lighting
- 8) - Sign lighting
- 9) - Reserve
- 10) - Headlights
- 11) - Free
- 12) - Smoke blower
- 13) - Blower 1
- 14) - Blower 2

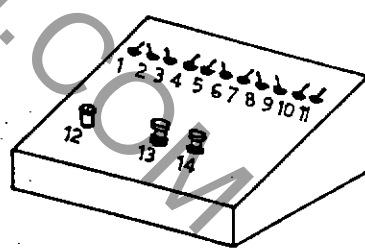
- Handle # 29 allows opening and closing of the entry gate and will be used at operator's discretion.
- Handle # 30 allows opening of exit door, beside ticket counter, in case of need.



(A)



(B)



11. CHECKING BEFORE SETTING RIDE AT WORK.

- Make sure that the electric system, and, in particular, the inner service lighting and the emergency lights work efficiently.
- Check pneumatic system and make sure that there is no compressed air loss and that the pressures indicated beside the truck air gauges are respected.
- Check efficiency of the smoke detectors.
- Make sure that emergency exits are properly adjusted: these exits are indicated by the sign " EXIT " and lead to exit stairways.
- Check extinguisher charge.
- Make sure that tag indicating advises to the public is properly exhibited outside the ride.

CARNY TOWN.COM