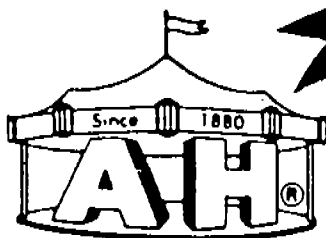


MFG: ALLEN HERSHELL
Ride: GHOST TRAIN



PORTABLE DARK RIDE

OPERATION, SERVICE, LUBRICATION, AND
PARTS CATALOG



Amusement Rides

ALLAN HERSHELL

COMPANY, INC.

"World's Largest Manufacturer of Amusement Rides"

1165 CLINTON STREET • BUFFALO 6, NEW YORK • PHONE: TA 5-8300



ALLAN HERSCHELL COMPANY

Division of Lisk-Savory Corp.

1165 CLINTON STREET

BOX 465

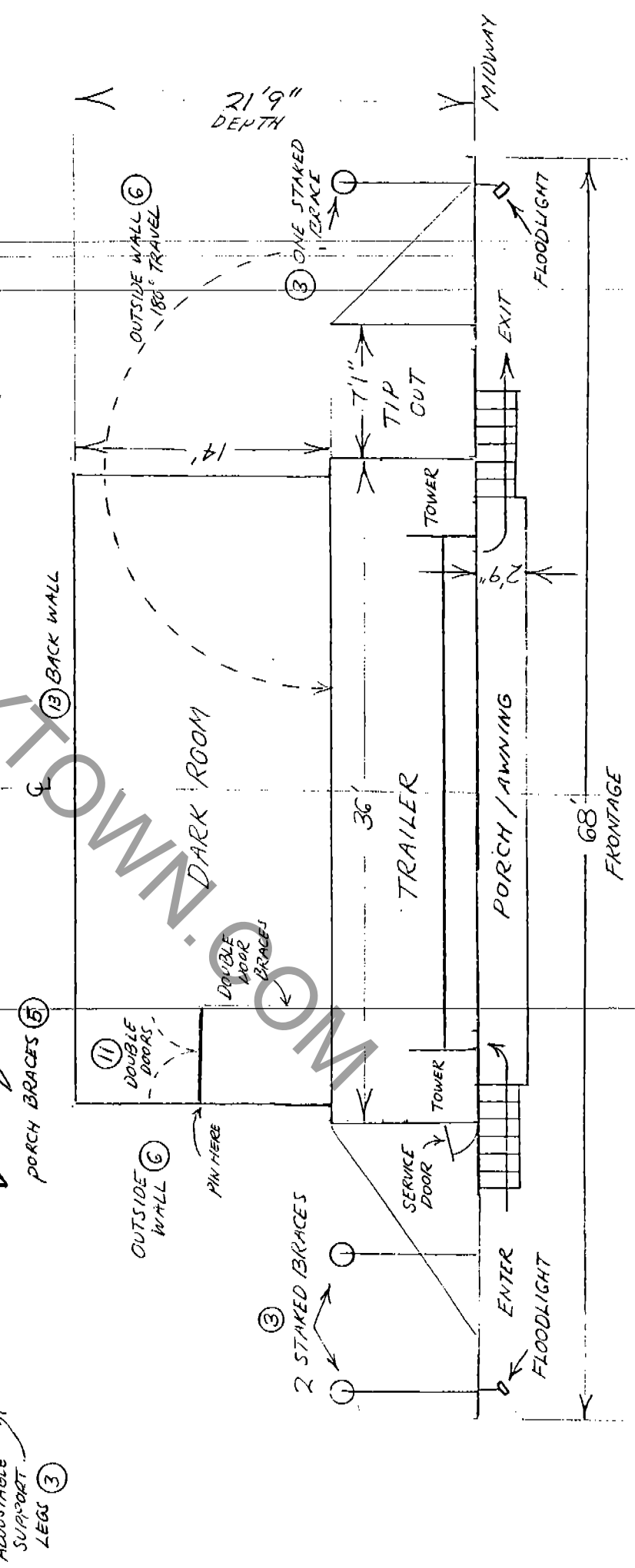
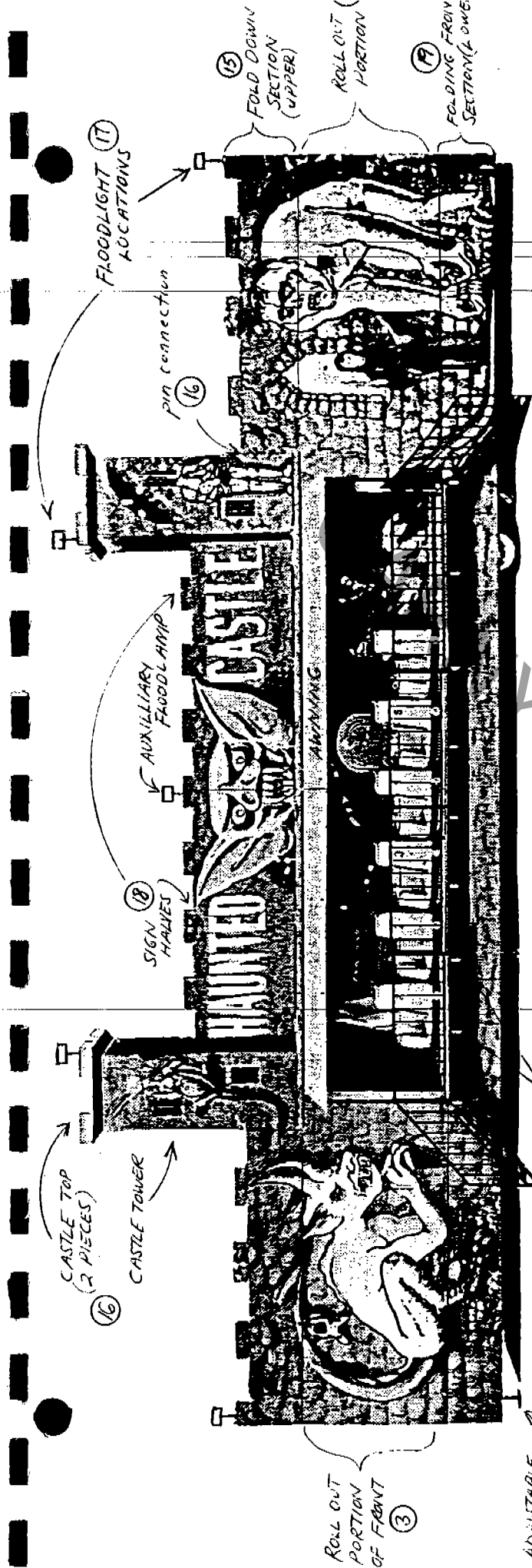
BUFFALO, NEW YORK 14240

Amusement Rides

SPECIFICATIONS

| | |
|------------------------|---------------------|
| Track length | 172' |
| Car Speed. | 3.5'/sec. |
| Power. | 220v 1phase 60amp |
| Capacity | 2 adults/3 children |
| Weight | .300lbs/car |
| Transformer. | 32v AC 9½KVA |
| Motors | 32v AC ½hp 1140 RPM |

CARNY TOWN.COM



PLAN VIEW
DARY BIDE Dartsch



ALLAN HERSHELL COMPANY

Division of Lisk-Savory Corp.

1165 CLINTON STREET

BOX 465

BUFFALO, NEW YORK 14240

Amusement Rides

SET UP INSTRUCTIONS

1. Locate trailer according to layout page. Be certain area is clear of overhead wires and branches for approx. 30 feet.
2. Uncouple truck-tractor and level trailer both directions using landing gears and suitable wood blocking under them.
3. Roll out front and attach adjustable support legs. No. 1 and 2 go on the front end of trailer and leg No. 3 attaches on the back. (Rear pull-out has only one brace). Adjust height of panels in relation to trailer using pinned jackstands. Attach support legs and stake them down at this time. (If you are unable to stake them due to a hard surface, use sandbags or attach to truck-tractor.)
4. Hook up electrical service: 220 volt, single phase 60 amp
5. Install ten porch braces found in rack behind tires. Open front by gently pulling down on porch until it goes over-center and then catch it and lower it slowly on to porch braces. Swing around rear ONLY scenery panel and install wheel cover section. Install stairways to each side of porch.
6. Open up large swinging walls on back-side of trailer and fold them around 180 degrees and tie them to something secure to prevent wind catching them!
7. Remove jackstands, feet, adjustable pipes and floor support rails from their racks underneath. Two support rails have eyebolts underneath. They go to the far outsides to provide a place to tie down sides of canvas top. All others are interchangeable. Erect jackstands, pipes and pin to approximate height and fine adjust to level with screw threads.
8. Unpin three tubing segments holding floor for transport and let them drop down and hang by chain.
9. Pull the floor out until any cable slack is removed.
10. With one man inside and one or two outside pulling on lower portion of floor, begin to lower the winch, while outside men continue to keep pulling the slack out of the cable. At some point (approx 45 degrees) the floor will overcome friction and begin sliding down the rails by itself.
11. When floor is completely down, unpin and raise the set of small double doors and install the two braces securing them to the solid trailer wall.

DARK RIDE SET UP INSTRUCTIONS, CONT:

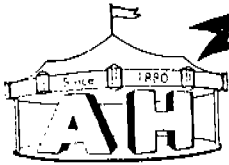
12. Untie outside walls and swing them into place pinning one to the tab provided on top of the small set of double doors. The other wall may need to be held until it can join the back wall.
13. Unpin the back wall from floor and raise it carefully joining into the slots on the side walls to form a solid building.
14. Using two or three men for safety, remove long pipes from channel iron racks and slip them on to short mounts going from back wall to just inside trailer ceiling. IMPORTANT: do not let pipes drop on one end as they will cause injury or bend their holders.
15. One man climbs on the roof of the trailer with a rope and hook to pull up fold-down front sections as another man unpins them and raises them up high enough the "roof" man may finish pulling them vertical and tying them off securely.
16. Castle towers may now be raised off the roof with the first section on each side pinning securely to the front section previously raised and tied off. Tower sections may now be completed with cross-bracing and top "catwalk" platforms, which become a place to stand to now add castle top halves and pin.
17. Floodlights may now be hung on the castle tops to the inside edges to light both the tower fronts and the sign when raised, preventing "dark" spots on the sign front.
18. Raise middle sign halves and install support braces.
19. Unpin fold-down sections on the roll-out front and lower them gently to protect the life of the hinges. Key them to the adjustable jackstands. Now swing around scenery section to cover gooseneck area and pin.
20. Swing up roof panel on rear of trailer with a prop pole, high enough so floor may lower and clear. Swing out both walls and erect jackstand, feet and two short floor support rails. Making certain walls are spread apart far enough to clear, use the winch and begin to lower to floor until it rests on support rails. Unhook winch cable and roll it up safely out of customer's reach. Stand up back wall and lower roof to meet it. Pin the two together. Open up inside wall and pin this divider to the ceiling.
21. Put on canvas top and snap-on darkening strip along trailer roof.

ALLAN HERSCHELL COMPANY, INC.

NORTH TONAWANDA, NEW YORK

DARK RIDE SET UP INSTRUCTIONS, CONT:

22. Install "U" shaped safety pins and floodlight fixtures to front. This will complete the structural integrity of the front panels.
23. Bolt on three removable track sections and tighten all connections securely to prevent heat during operation. IMPORTANT: Do not allow hot rail connection to touch top or bottom flange of track or a shorted transformer will occur!
24. Divider curtains may be hung from ceiling pipes inside.
25. Sweep out any and all debris that might have accumulated in track. If air compressor is available, blow out track periodically to keep metal shavings from causing potential "shorts".
26. Go around and re-adjust jackstands and make certain floor support rails are lying between hinge gaps on underside of folding floor. If not, a raised area will appear in floor area and track will not align properly.
27. Track being clear of all obstacles, unpin cars from transport hold-downs and prepare to run. Turn on track. If transformer "hums", shut off track immediately and search for hot connector touching rail flange somewhere in track. A mis-placed tool or wrench may sometimes be the problem also.
28. If ride performs normally, turn off service lights and operate as per instructions in this manual.



Amusement Rides

ALLAN HERSCHELL COMPANY INC.

and

THE MINIATURE TRAIN CO. *Division*



104 OLIVER STREET

NORTH TONAWANDA, NEW YORK

DARK RIDE OPERATION GUIDELINES

Since the single story dark ride is a high speed loading/unloading device, it is recommended to have a prudent, quick-reflexed operator when running all six cars to assure cars are not accidentally started while passengers are boarding or unloading.

Some rides are fitted with auxiliary controls for an exit area operator when running capacity business. The second man will assure passengers disembark quickly and prevent other cars from running into the back of their stopped vehicle. The second operator will pay off quickly in increased capacity and revenues per hour during peak periods.

It is reportedly a habit of some owners to have threads or nylon strings suspended from roof pipes to frighten passengers. **THIS IS NOT RECOMMENDED!** They become entangled in eyeglasses and rings, jewelry and wristwatches of moving patrons. They also are pulled down only to wrap up in car trolley brushes and car bearings.

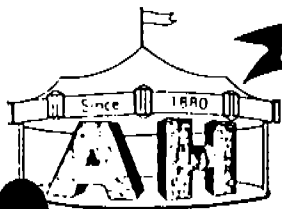
Do not overload the cars as a practice. Two medium size adults should fit comfortably in the seat. If not, ride them separate. Capacity per car is 300lbs.

If cars become stalled inside, advise passengers to remain seated and manually push the car out. It is not recommended to have the patrons get out unless of rapid emergency or car is unmovable. Keep passengers inside cars for short-term power failures. Emergency lighting will come on at this time. If power will be off indefinitely, turn off track power and walk patrons to the nearest of the three exits. Turning off track power will assure their safety in case power should be restored while they are exiting. Never lock maintenance doors during operating hours.

Cars should not be dispatched until patrons are sitting and arms, legs and feet are well inside the car frame. Loose articles like toys and purses should remain inside car. No food, drink or smoking shall be permitted, nor visible cigarette lighters, firecrackers, smoke bombs, knives etc. for obvious reasons.

Disfiguring, vandalizing or getting out of moving cars should not be tolerated.

Turn off track before doing any repairs.



Amusement Rides

Bulletin No. _____

Date _____

ALLAN HERSCHELL COMPANY INC.

and

THE MINIATURE TRAIN CO. *Division*



104 OLIVER STREET

NORTH TONAWANDA, NEW YORK

Service Bulletin

Ride DARK RIDE

Subject WIND PRECAUTIONS

File _____

In an effort to insure safe erection and dismantling of the ride building and front during high winds or unpredictable gusts, the following tips are recommended:

1. Secure each step of set-up or tear-down with stakes or safety ropes until parts are firmly braced or joined together to complete the section, or it is secured for transport.
2. Leave safety pull ropes attached to fold-up front panels even during operation, so they will be available should a high wind emergency arise.
3. Use truck-tractor roof for portable work platform if substantial step ladder is not available, especially for installing floodlight fixtures on outer ends of front.
4. Never leave front or folding walls unsecured or unbraced for even short periods (lunch breaks, etc.)
5. Secure top tower sections on roof for transport with a rope or nylon strap over the top.
6. Rainwater should not be allowed to build up all day on the canvas roof. Empty periodically.

Safety of employees during sudden wind gusts is of utmost importance!

Amusement Rides



ALLAN HERSCHELL
COMPANY, INC.

"World's Largest Manufacturer of Amusement Rides"

115 CLINTON STREET - BUFFALO 6, NEW YORK - PHONE: TA 5-8300

DARK RIDE LUBRICATION

The single-level dark ride needs a minimum amount of lubrication compared with other amusement rides, however certain points with ensure longer life if attended to.

Zerk fittings are provided for each swivel on the car front trolley assembly and should be lubricated with any high-pressure grease, preferably Texaco Marfak product. Trolley wheel bearings are sealed and should have long life because of low RPM provided they are kept reasonably clean.

Track must be kept free of debris between the hot rail and main rail to prolong brush life. A brush-on graphite product will retard wear on brushes, however must be used very gently on the loading area as it will get on shoes and get on to ramps and stairways making them slick for patrons.

Standard 90 weight gear lube is recommended for the car gear reduction units and chains should have a brush on open lube. This also applies to inside stunt mechanisms.

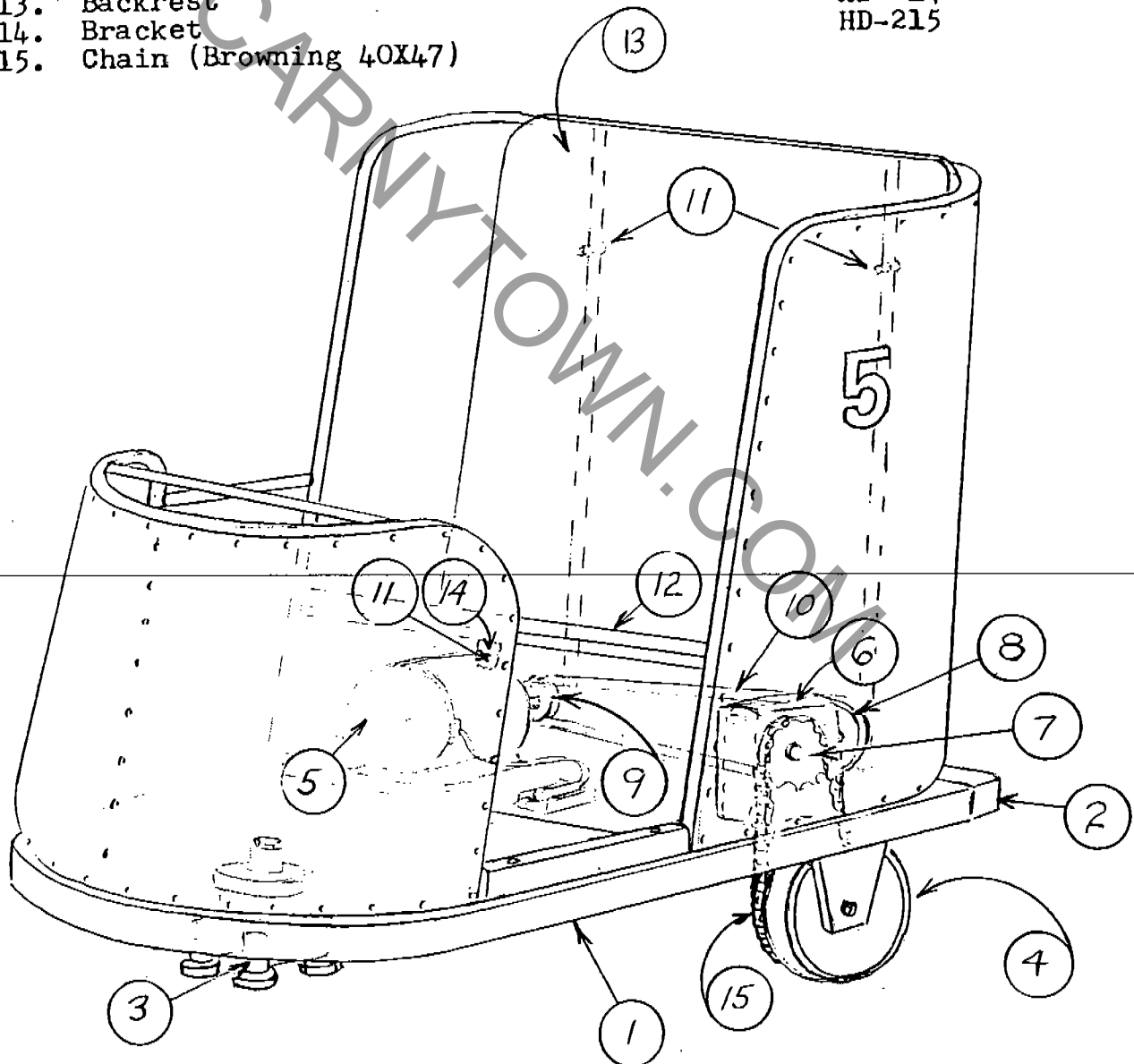
Use caution to not get any lubricants on cars or seat cushions.

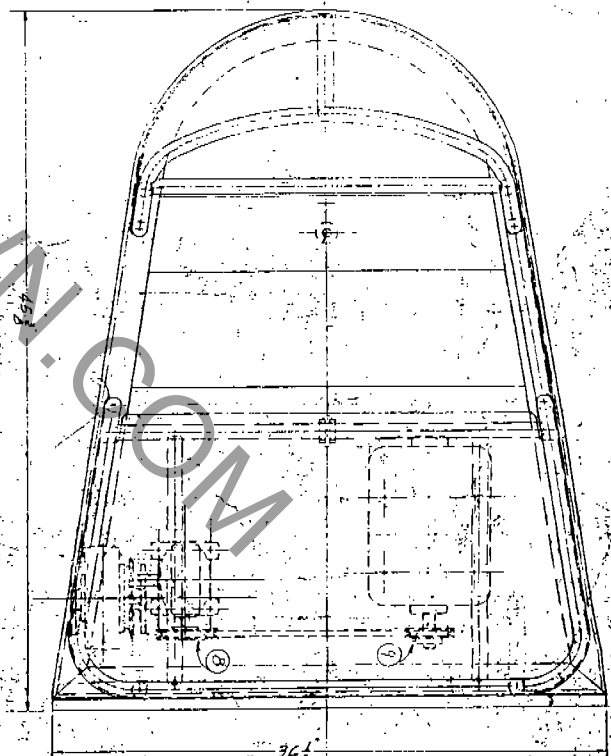
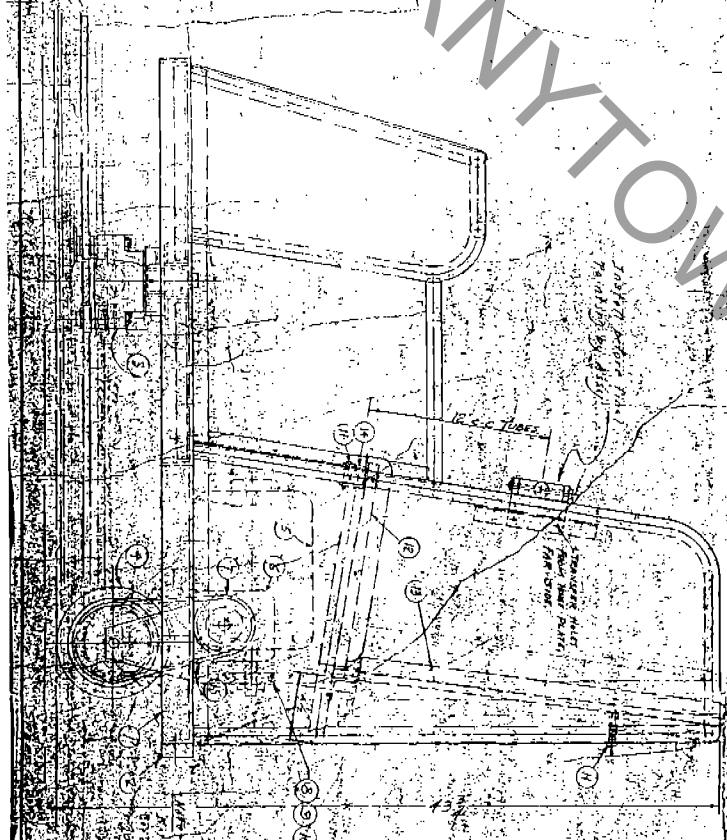
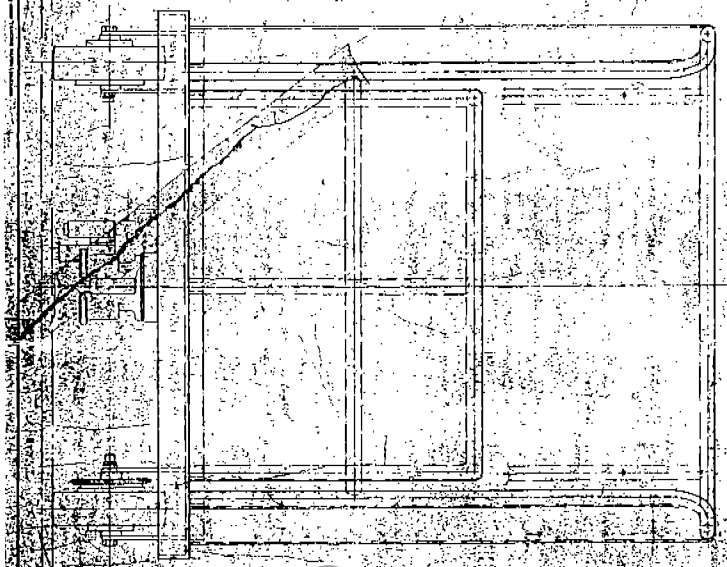
Portable model dark rides must follow manufacturer's recommendations on trailer axle bearings and fifth wheel pins.

Any questions or comments, please feel free to contact the Allan Herschell Company.

GROUP ASSEMBLY PARTS LIST

| PART | NOMENCLATURE | FIGURE INDEX NO. | UNITS PER ASSY |
|------|--|------------------|----------------|
| 1. | Car frame | HD-197 | |
| 2. | Bumper | HD-212 | |
| 3. | Front trolley assy. | HD-256 | |
| 4. | Rear wheel & axle assy. | HD-254 | |
| 5. | Motor (Master 1/2hp 1340rpm 32v H66 frame) | | |
| 6. | Reducer (Amer Stock Gear Div ST 1810 C) | | |
| 7. | Sprocket (Browning 40B 24 X 3/4" bore) | | |
| 8. | Sheave (AK44 1/2 bore, 1/8 key) | | |
| 9. | Sheave (AK32 3/4 bore 3/16 key) | | |
| 10. | V-Belt (Browning 4L440) | | |
| 11. | Screw (1/4 20 1 1/2" long) | | |
| 12. | Seat | HD-213 | |
| 13. | Backrest | HD-214 | |
| 14. | Bracket | HD-215 | |
| 15. | Chain (Browning 40X47) | | |





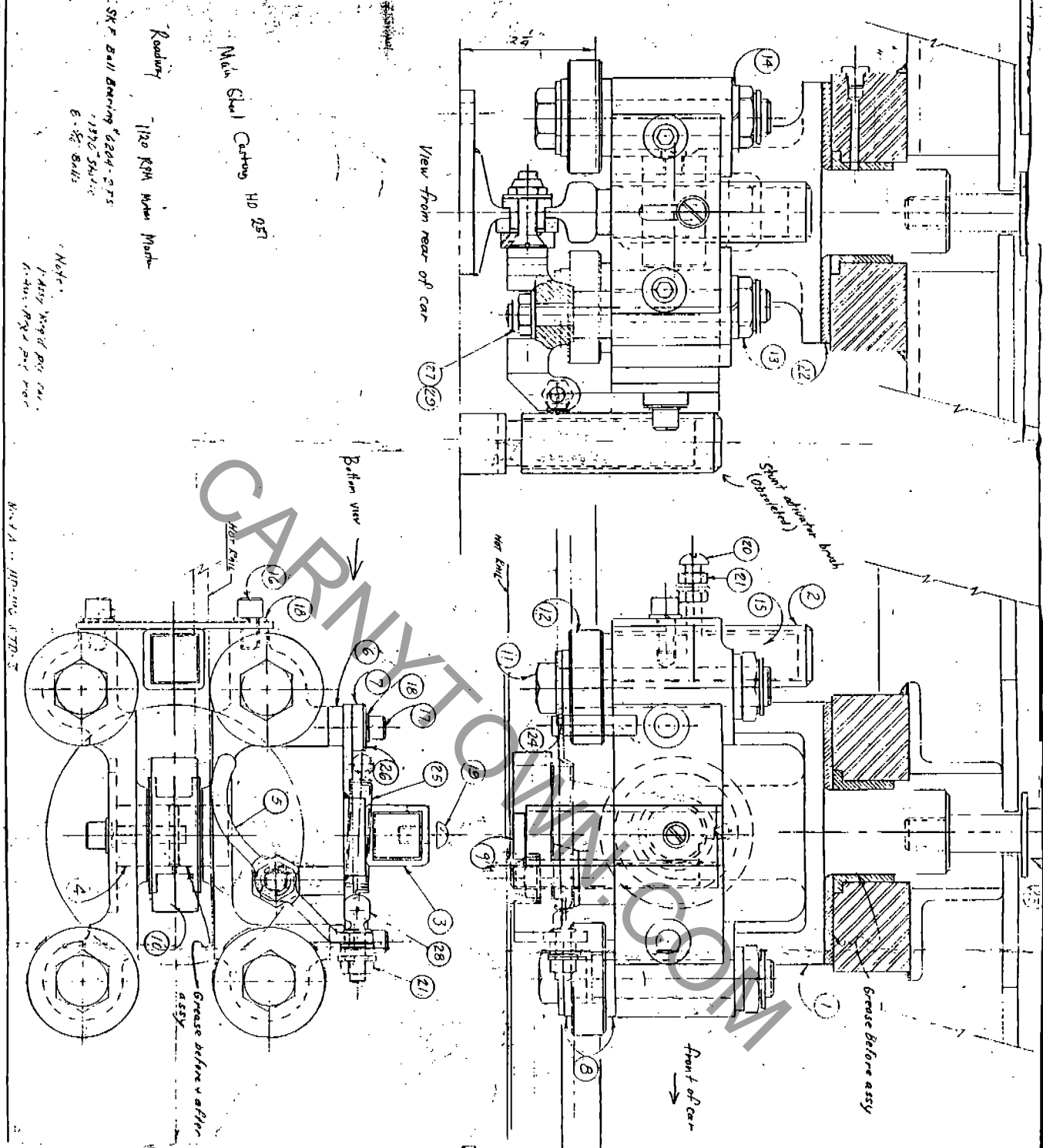
CARNY TOWN.COM

| NO. | DESCRIPTION | QTY. | UNIT |
|-----|-------------|------|------|
| 1 | ... | ... | ... |
| 2 | ... | ... | ... |
| 3 | ... | ... | ... |
| 4 | ... | ... | ... |
| 5 | ... | ... | ... |
| 6 | ... | ... | ... |
| 7 | ... | ... | ... |
| 8 | ... | ... | ... |
| 9 | ... | ... | ... |
| 10 | ... | ... | ... |
| 11 | ... | ... | ... |
| 12 | ... | ... | ... |
| 13 | ... | ... | ... |
| 14 | ... | ... | ... |
| 15 | ... | ... | ... |
| 16 | ... | ... | ... |
| 17 | ... | ... | ... |
| 18 | ... | ... | ... |
| 19 | ... | ... | ... |
| 20 | ... | ... | ... |
| 21 | ... | ... | ... |
| 22 | ... | ... | ... |
| 23 | ... | ... | ... |
| 24 | ... | ... | ... |
| 25 | ... | ... | ... |
| 26 | ... | ... | ... |
| 27 | ... | ... | ... |
| 28 | ... | ... | ... |
| 29 | ... | ... | ... |
| 30 | ... | ... | ... |
| 31 | ... | ... | ... |
| 32 | ... | ... | ... |
| 33 | ... | ... | ... |
| 34 | ... | ... | ... |
| 35 | ... | ... | ... |
| 36 | ... | ... | ... |
| 37 | ... | ... | ... |
| 38 | ... | ... | ... |
| 39 | ... | ... | ... |
| 40 | ... | ... | ... |
| 41 | ... | ... | ... |
| 42 | ... | ... | ... |
| 43 | ... | ... | ... |
| 44 | ... | ... | ... |
| 45 | ... | ... | ... |
| 46 | ... | ... | ... |
| 47 | ... | ... | ... |
| 48 | ... | ... | ... |
| 49 | ... | ... | ... |
| 50 | ... | ... | ... |

Rear wheels: Dark steel
 front and middle
 SKF 604 2RS
 bearings
 Tire: 800-300
 16 8X2

| NO. | DESCRIPTION | QTY. | UNIT |
|-----|-------------|------|------|
| 1 | ... | ... | ... |
| 2 | ... | ... | ... |
| 3 | ... | ... | ... |
| 4 | ... | ... | ... |
| 5 | ... | ... | ... |
| 6 | ... | ... | ... |
| 7 | ... | ... | ... |
| 8 | ... | ... | ... |
| 9 | ... | ... | ... |
| 10 | ... | ... | ... |
| 11 | ... | ... | ... |
| 12 | ... | ... | ... |
| 13 | ... | ... | ... |
| 14 | ... | ... | ... |
| 15 | ... | ... | ... |
| 16 | ... | ... | ... |
| 17 | ... | ... | ... |
| 18 | ... | ... | ... |
| 19 | ... | ... | ... |
| 20 | ... | ... | ... |
| 21 | ... | ... | ... |
| 22 | ... | ... | ... |
| 23 | ... | ... | ... |
| 24 | ... | ... | ... |
| 25 | ... | ... | ... |
| 26 | ... | ... | ... |
| 27 | ... | ... | ... |
| 28 | ... | ... | ... |
| 29 | ... | ... | ... |
| 30 | ... | ... | ... |
| 31 | ... | ... | ... |
| 32 | ... | ... | ... |
| 33 | ... | ... | ... |
| 34 | ... | ... | ... |
| 35 | ... | ... | ... |
| 36 | ... | ... | ... |
| 37 | ... | ... | ... |
| 38 | ... | ... | ... |
| 39 | ... | ... | ... |
| 40 | ... | ... | ... |
| 41 | ... | ... | ... |
| 42 | ... | ... | ... |
| 43 | ... | ... | ... |
| 44 | ... | ... | ... |
| 45 | ... | ... | ... |
| 46 | ... | ... | ... |
| 47 | ... | ... | ... |
| 48 | ... | ... | ... |
| 49 | ... | ... | ... |
| 50 | ... | ... | ... |

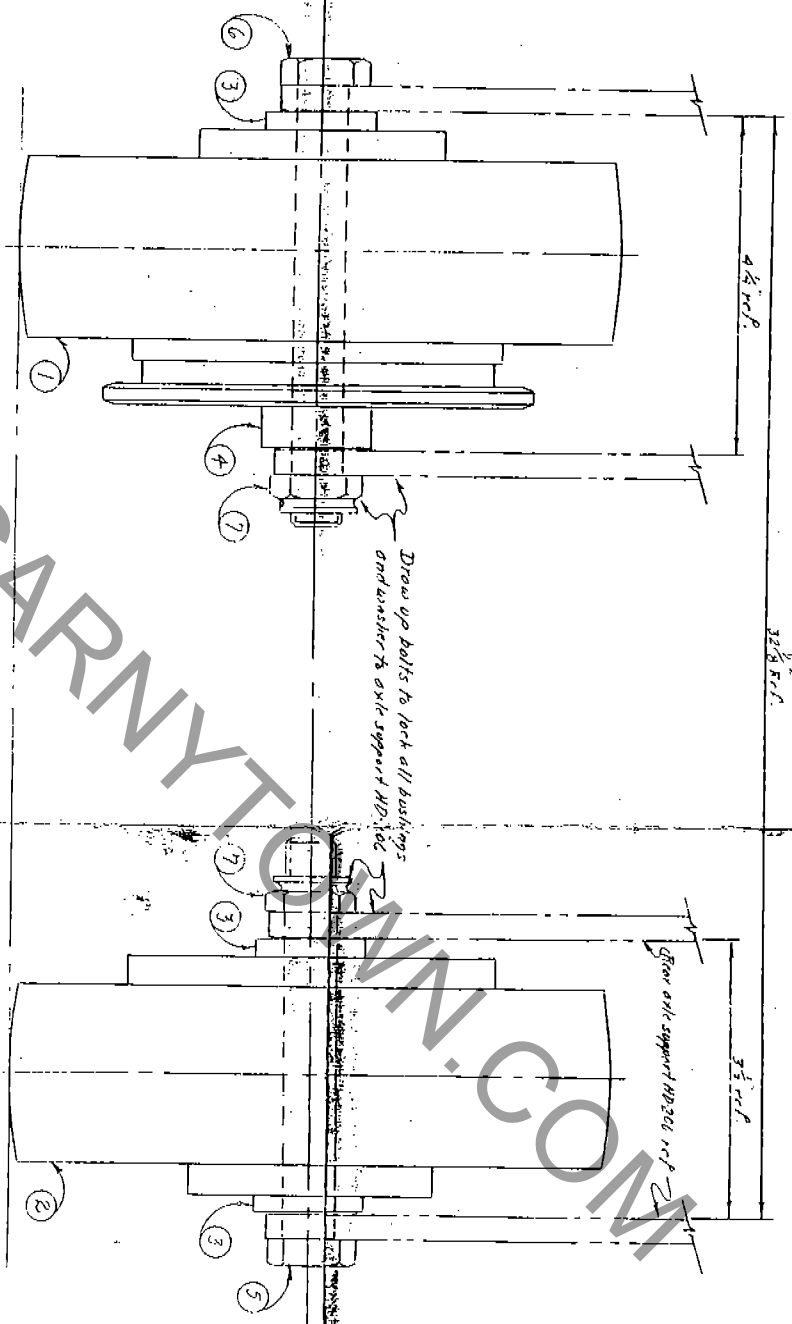
ALLAN MERSHILL CO. INC.
 1000 N. 10TH ST.
 NORTH PLAINFIELD, N.J. 07061



| QTY | DESCRIPTION | QTY | DESCRIPTION |
|-----|---------------------------------|-----|---------------------------------|
| 29 | 1 Hubcap Part # SAE 102 | 29 | 1 Hubcap Part # SAE 102 |
| 24 | 6 Thrust Screws | 24 | 6 Thrust Screws |
| 27 | 6 Wkr H. Rivets 3/16 Dia. 20 | 27 | 6 Wkr H. Rivets 3/16 Dia. 20 |
| 26 | 12 Washer Rivets 3/16 Dia. 20 | 26 | 12 Washer Rivets 3/16 Dia. 20 |
| 35 | 6 Screws | 35 | 6 Screws |
| 24 | 6 Washers 1/8" Dia. 3/16" Thick | 24 | 6 Washers 1/8" Dia. 3/16" Thick |
| 24 | 6 Front S. Rivets 3/16 Dia. 20 | 24 | 6 Front S. Rivets 3/16 Dia. 20 |
| 24 | 6 Front S. Rivets 3/16 Dia. 20 | 24 | 6 Front S. Rivets 3/16 Dia. 20 |
| 18 | 6 Screws 1/8" Dia. 3/16" Thick | 18 | 6 Screws 1/8" Dia. 3/16" Thick |
| 17 | 12 Screws 1/8" Dia. 3/16" Thick | 17 | 12 Screws 1/8" Dia. 3/16" Thick |
| 16 | 12 Screws 1/8" Dia. 3/16" Thick | 16 | 12 Screws 1/8" Dia. 3/16" Thick |
| 15 | 2 Screws | 15 | 2 Screws |
| 14 | 2 Washers 1/8" Dia. 3/16" Thick | 14 | 2 Washers 1/8" Dia. 3/16" Thick |
| 13 | 2 Washers 1/8" Dia. 3/16" Thick | 13 | 2 Washers 1/8" Dia. 3/16" Thick |
| 12 | 2 Washers 1/8" Dia. 3/16" Thick | 12 | 2 Washers 1/8" Dia. 3/16" Thick |
| 11 | 2 Washers 1/8" Dia. 3/16" Thick | 11 | 2 Washers 1/8" Dia. 3/16" Thick |
| 10 | 2 Washers 1/8" Dia. 3/16" Thick | 10 | 2 Washers 1/8" Dia. 3/16" Thick |
| 9 | 2 Washers 1/8" Dia. 3/16" Thick | 9 | 2 Washers 1/8" Dia. 3/16" Thick |
| 8 | 2 Washers 1/8" Dia. 3/16" Thick | 8 | 2 Washers 1/8" Dia. 3/16" Thick |
| 7 | 2 Washers 1/8" Dia. 3/16" Thick | 7 | 2 Washers 1/8" Dia. 3/16" Thick |
| 6 | 2 Washers 1/8" Dia. 3/16" Thick | 6 | 2 Washers 1/8" Dia. 3/16" Thick |
| 5 | 2 Washers 1/8" Dia. 3/16" Thick | 5 | 2 Washers 1/8" Dia. 3/16" Thick |
| 4 | 2 Washers 1/8" Dia. 3/16" Thick | 4 | 2 Washers 1/8" Dia. 3/16" Thick |
| 3 | 2 Washers 1/8" Dia. 3/16" Thick | 3 | 2 Washers 1/8" Dia. 3/16" Thick |
| 2 | 2 Washers 1/8" Dia. 3/16" Thick | 2 | 2 Washers 1/8" Dia. 3/16" Thick |
| 1 | 2 Washers 1/8" Dia. 3/16" Thick | 1 | 2 Washers 1/8" Dia. 3/16" Thick |

Pickup shoe (part # 5) data:
 3/4" x 5/8" x 1/4"
 0.05-0.25 Phosphor Bronze
 SAE C4
 78.5-81.5 Gpm
 9-11 Tm
 9-11 Lead

NAME: Front Wheel Assembly
 USED ON: Portable Dark Rider
 DRAWN BY: [] DATE: 12-17-52
 CHECKED BY: [] DATE: 12-17-52
 PART NO: HD-256 D
 ALLAN HERSCHELL CO., INC.
 BUFFALO, N.Y.



Note:
 1 - Assy req'd per car.
 6 - Assy req'd per side.

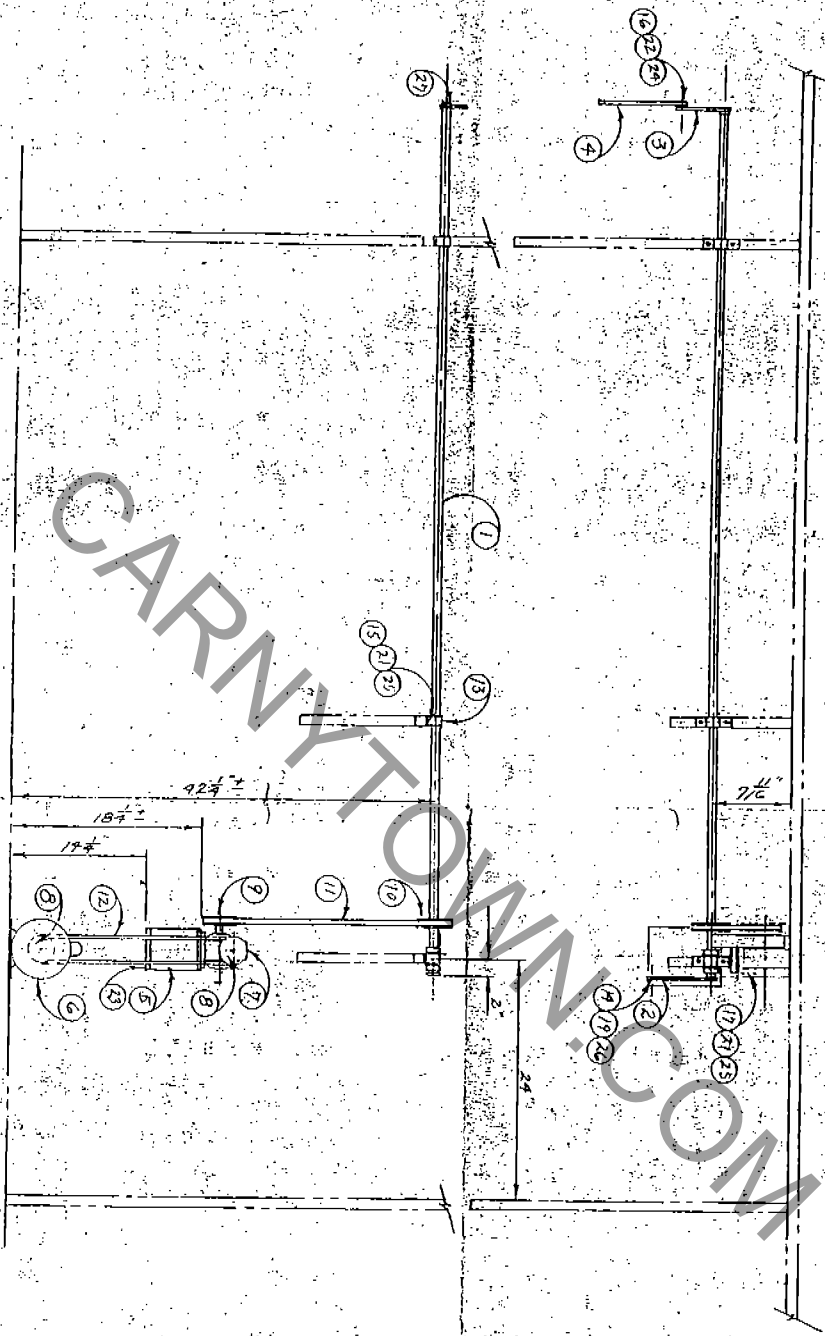
CARNYTT.COM

| NO. | DATE | CHANGE NO. | D.W. |
|-----|---------|------------|------|
| 0 | 1/20/48 | | |

| | | | |
|---|----|---------------------------|--------|
| 7 | 12 | Washer 3/8" x 1/2" x 1/8" | |
| 6 | 6 | Washer 3/8" x 1/2" x 1/8" | |
| 5 | 6 | Screw 3/8" x 1/2" x 1/8" | |
| 4 | 6 | Spacer bushing | HD-398 |
| 3 | 18 | Spacer bushing | HD-397 |
| 2 | 6 | Rear wheel Assy | HD-350 |
| 1 | 6 | Drive wheel Assy | HD-351 |

ALLAN HERSCHELL CO., INC.
 SUFPAID, N. Y.

NAME: *Rear Wheel & Axle Assy*
 USED ON: *Parlatrol-Dark Ride*
 DRAWN BY: *...* DATE: *12/1/48*
 CHECKED BY: *...* DATE: *12/1/48*



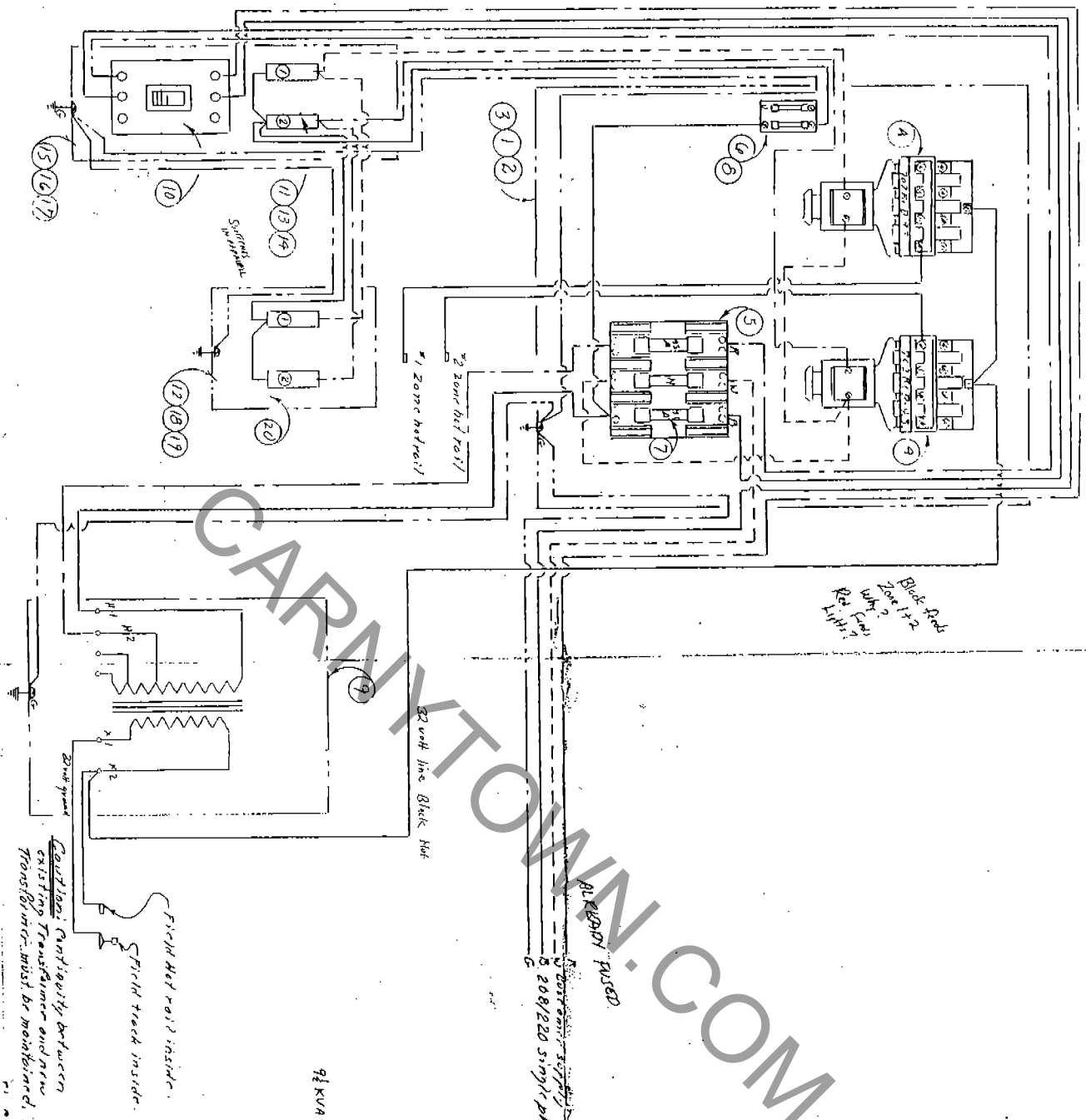
Next Assy. HD-

EL-ER

| NO. | DESCRIPTION | QTY. | UNIT | PRICE | TOTAL |
|-----|---|------|------|-------|-------|
| 26 | 2. Plate Metal 1/2" x 2 1/2" x 1/8" | | | | |
| 27 | 3. 1/2" x 1/2" x 1/2" Nut | | | | |
| 28 | 1. 1/2" x 1/2" x 1/2" Bolt | | | | |
| 29 | 1. 1/2" x 1/2" x 1/2" Washer | | | | |
| 30 | 1. 1/2" x 1/2" x 1/2" Lock Washer | | | | |
| 31 | 1. 1/2" x 1/2" x 1/2" Spring Washer | | | | |
| 32 | 1. 1/2" x 1/2" x 1/2" Flat Washer | | | | |
| 33 | 1. 1/2" x 1/2" x 1/2" Round Washer | | | | |
| 34 | 1. 1/2" x 1/2" x 1/2" Square Washer | | | | |
| 35 | 1. 1/2" x 1/2" x 1/2" Hex Washer | | | | |
| 36 | 1. 1/2" x 1/2" x 1/2" Oval Washer | | | | |
| 37 | 1. 1/2" x 1/2" x 1/2" Triangular Washer | | | | |
| 38 | 1. 1/2" x 1/2" x 1/2" Diamond Washer | | | | |
| 39 | 1. 1/2" x 1/2" x 1/2" Circular Washer | | | | |
| 40 | 1. 1/2" x 1/2" x 1/2" Square Washer | | | | |
| 41 | 1. 1/2" x 1/2" x 1/2" Hex Washer | | | | |
| 42 | 1. 1/2" x 1/2" x 1/2" Oval Washer | | | | |
| 43 | 1. 1/2" x 1/2" x 1/2" Triangular Washer | | | | |
| 44 | 1. 1/2" x 1/2" x 1/2" Diamond Washer | | | | |
| 45 | 1. 1/2" x 1/2" x 1/2" Circular Washer | | | | |
| 46 | 1. 1/2" x 1/2" x 1/2" Square Washer | | | | |
| 47 | 1. 1/2" x 1/2" x 1/2" Hex Washer | | | | |
| 48 | 1. 1/2" x 1/2" x 1/2" Oval Washer | | | | |
| 49 | 1. 1/2" x 1/2" x 1/2" Triangular Washer | | | | |
| 50 | 1. 1/2" x 1/2" x 1/2" Diamond Washer | | | | |
| 51 | 1. 1/2" x 1/2" x 1/2" Circular Washer | | | | |
| 52 | 1. 1/2" x 1/2" x 1/2" Square Washer | | | | |
| 53 | 1. 1/2" x 1/2" x 1/2" Hex Washer | | | | |
| 54 | 1. 1/2" x 1/2" x 1/2" Oval Washer | | | | |
| 55 | 1. 1/2" x 1/2" x 1/2" Triangular Washer | | | | |
| 56 | 1. 1/2" x 1/2" x 1/2" Diamond Washer | | | | |
| 57 | 1. 1/2" x 1/2" x 1/2" Circular Washer | | | | |
| 58 | 1. 1/2" x 1/2" x 1/2" Square Washer | | | | |
| 59 | 1. 1/2" x 1/2" x 1/2" Hex Washer | | | | |
| 60 | 1. 1/2" x 1/2" x 1/2" Oval Washer | | | | |
| 61 | 1. 1/2" x 1/2" x 1/2" Triangular Washer | | | | |
| 62 | 1. 1/2" x 1/2" x 1/2" Diamond Washer | | | | |
| 63 | 1. 1/2" x 1/2" x 1/2" Circular Washer | | | | |
| 64 | 1. 1/2" x 1/2" x 1/2" Square Washer | | | | |
| 65 | 1. 1/2" x 1/2" x 1/2" Hex Washer | | | | |
| 66 | 1. 1/2" x 1/2" x 1/2" Oval Washer | | | | |
| 67 | 1. 1/2" x 1/2" x 1/2" Triangular Washer | | | | |
| 68 | 1. 1/2" x 1/2" x 1/2" Diamond Washer | | | | |
| 69 | 1. 1/2" x 1/2" x 1/2" Circular Washer | | | | |
| 70 | 1. 1/2" x 1/2" x 1/2" Square Washer | | | | |
| 71 | 1. 1/2" x 1/2" x 1/2" Hex Washer | | | | |
| 72 | 1. 1/2" x 1/2" x 1/2" Oval Washer | | | | |
| 73 | 1. 1/2" x 1/2" x 1/2" Triangular Washer | | | | |
| 74 | 1. 1/2" x 1/2" x 1/2" Diamond Washer | | | | |
| 75 | 1. 1/2" x 1/2" x 1/2" Circular Washer | | | | |
| 76 | 1. 1/2" x 1/2" x 1/2" Square Washer | | | | |
| 77 | 1. 1/2" x 1/2" x 1/2" Hex Washer | | | | |
| 78 | 1. 1/2" x 1/2" x 1/2" Oval Washer | | | | |
| 79 | 1. 1/2" x 1/2" x 1/2" Triangular Washer | | | | |
| 80 | 1. 1/2" x 1/2" x 1/2" Diamond Washer | | | | |
| 81 | 1. 1/2" x 1/2" x 1/2" Circular Washer | | | | |
| 82 | 1. 1/2" x 1/2" x 1/2" Square Washer | | | | |
| 83 | 1. 1/2" x 1/2" x 1/2" Hex Washer | | | | |
| 84 | 1. 1/2" x 1/2" x 1/2" Oval Washer | | | | |
| 85 | 1. 1/2" x 1/2" x 1/2" Triangular Washer | | | | |
| 86 | 1. 1/2" x 1/2" x 1/2" Diamond Washer | | | | |
| 87 | 1. 1/2" x 1/2" x 1/2" Circular Washer | | | | |
| 88 | 1. 1/2" x 1/2" x 1/2" Square Washer | | | | |
| 89 | 1. 1/2" x 1/2" x 1/2" Hex Washer | | | | |
| 90 | 1. 1/2" x 1/2" x 1/2" Oval Washer | | | | |
| 91 | 1. 1/2" x 1/2" x 1/2" Triangular Washer | | | | |
| 92 | 1. 1/2" x 1/2" x 1/2" Diamond Washer | | | | |
| 93 | 1. 1/2" x 1/2" x 1/2" Circular Washer | | | | |
| 94 | 1. 1/2" x 1/2" x 1/2" Square Washer | | | | |
| 95 | 1. 1/2" x 1/2" x 1/2" Hex Washer | | | | |
| 96 | 1. 1/2" x 1/2" x 1/2" Oval Washer | | | | |
| 97 | 1. 1/2" x 1/2" x 1/2" Triangular Washer | | | | |
| 98 | 1. 1/2" x 1/2" x 1/2" Diamond Washer | | | | |
| 99 | 1. 1/2" x 1/2" x 1/2" Circular Washer | | | | |
| 100 | 1. 1/2" x 1/2" x 1/2" Square Washer | | | | |

NAME: **Stuart D. Prosser**
 USED ON: **Portable Dark Box**
 ALLAN HERSCHELL CO. INC.
 NORTH TONAWANDA, N. Y.

DATE: **HD-140**



42 KVA →

| | | | |
|----|---|-----------------------------|-------|
| 20 | 1 | Huntley Electric | WD-15 |
| 19 | 1 | Center Section | WD-93 |
| 18 | 1 | Bank Section | WD-92 |
| 17 | 1 | Water Room | WD-91 |
| 16 | 1 | Cable Box | WD-90 |
| 15 | 1 | Control Panel | WD-89 |
| 14 | 2 | Motor 500W 1/2 hp | WD-88 |
| 13 | 2 | Motor 500W 1/2 hp | WD-87 |
| 12 | 1 | Light Control | WD-86 |
| 11 | 4 | Motor 400W 1/2 hp | WD-85 |
| 10 | 1 | Switch (KALITE) 500W 3/4 hp | WD-84 |
| 9 | 1 | Transformer (KALITE) | WD-83 |
| 8 | 3 | Transformer 250W C 3 Amp | WD-82 |
| 7 | 4 | Fuse Box 45 Amp | WD-81 |
| 6 | 1 | Fuse Box 45 Amp | WD-80 |
| 5 | 1 | Fuse Box 45 Amp | WD-79 |
| 4 | 2 | Control Panel (KALITE) | WD-78 |
| 3 | 1 | Control Panel (KALITE) | WD-77 |
| 2 | 1 | Box Control | WD-76 |
| 1 | 1 | Control Panel | WD-75 |

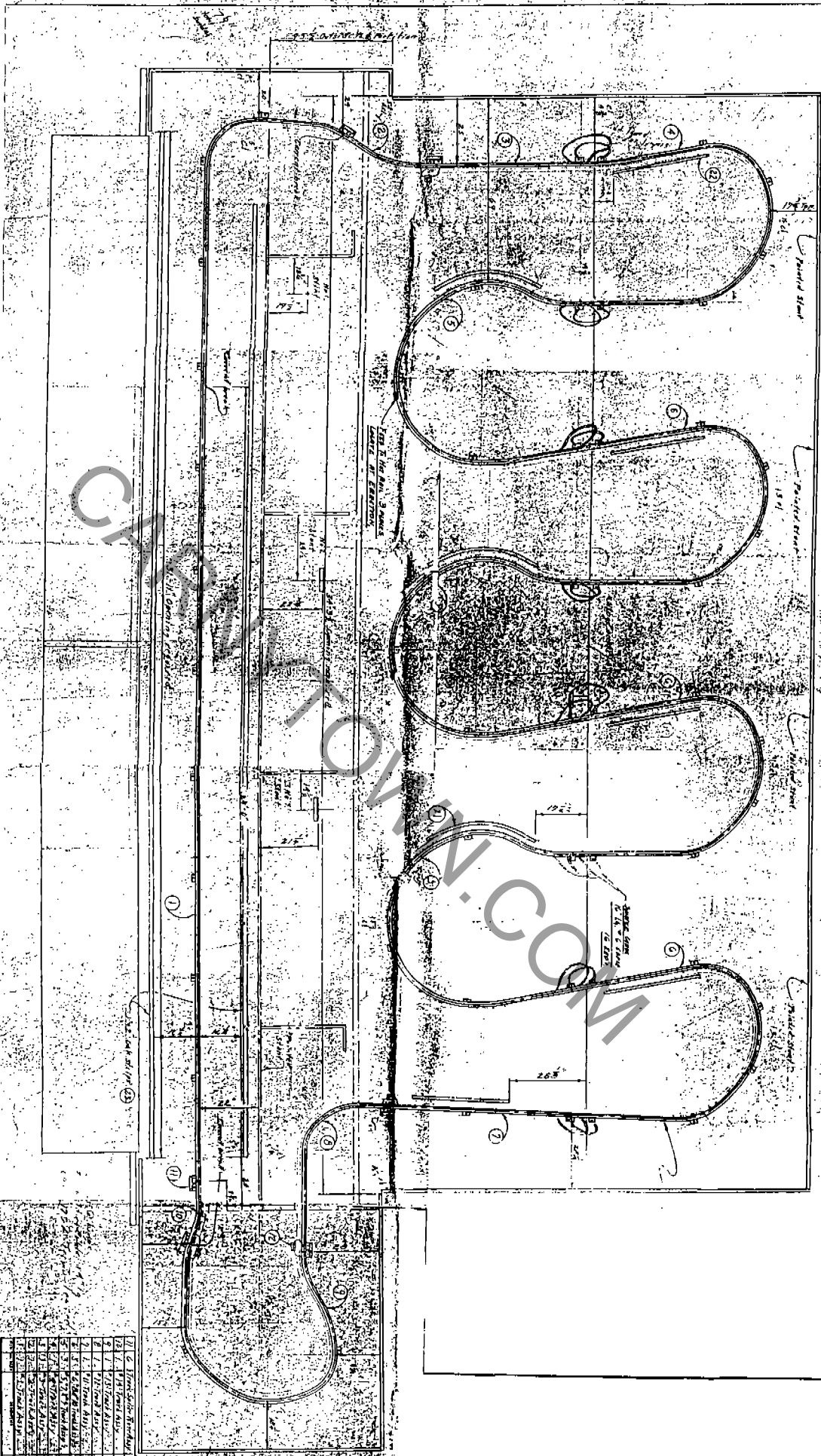
ALLAN HERSCHELL CO., INC.
BUFFALO, N. Y.

NAME: *Wiring Diagrams Rear Ext.*

USED ON: *Huntley Park R.V. Section*

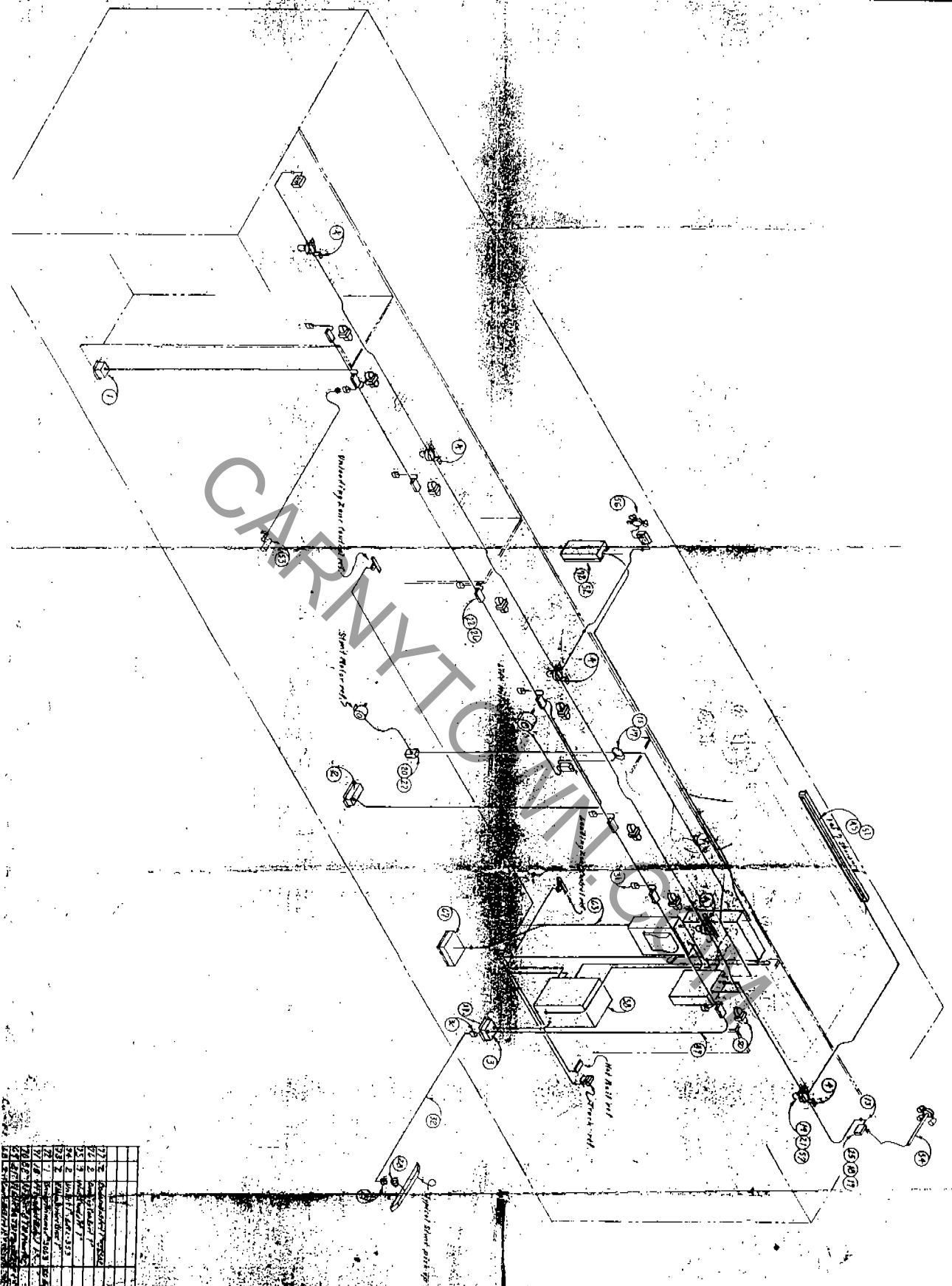
| | | |
|-------------|----------|------|
| PROJECT NO. | DATE | TEXT |
| NO. 100-100 | 10/15/60 | 1 |
| PROJECT NO. | DATE | TEXT |
| NO. 100-100 | 10/15/60 | 1 |

FIGURE NO. *HD-387*



ALLAN HERSCHEL CO. INC.
 1700 N. 1st St. - PHOENIX, ARIZONA

| NO. | DESCRIPTION | QTY. | UNIT | PRICE | TOTAL |
|-----|---|------|------|-------|-------|
| 1 | 1/2" x 1/2" x 1/2" x 1/2" x 1/2" x 1/2" | | | | |
| 2 | 1/2" x 1/2" x 1/2" x 1/2" x 1/2" x 1/2" | | | | |
| 3 | 1/2" x 1/2" x 1/2" x 1/2" x 1/2" x 1/2" | | | | |
| 4 | 1/2" x 1/2" x 1/2" x 1/2" x 1/2" x 1/2" | | | | |
| 5 | 1/2" x 1/2" x 1/2" x 1/2" x 1/2" x 1/2" | | | | |
| 6 | 1/2" x 1/2" x 1/2" x 1/2" x 1/2" x 1/2" | | | | |
| 7 | 1/2" x 1/2" x 1/2" x 1/2" x 1/2" x 1/2" | | | | |
| 8 | 1/2" x 1/2" x 1/2" x 1/2" x 1/2" x 1/2" | | | | |
| 9 | 1/2" x 1/2" x 1/2" x 1/2" x 1/2" x 1/2" | | | | |
| 10 | 1/2" x 1/2" x 1/2" x 1/2" x 1/2" x 1/2" | | | | |
| 11 | 1/2" x 1/2" x 1/2" x 1/2" x 1/2" x 1/2" | | | | |

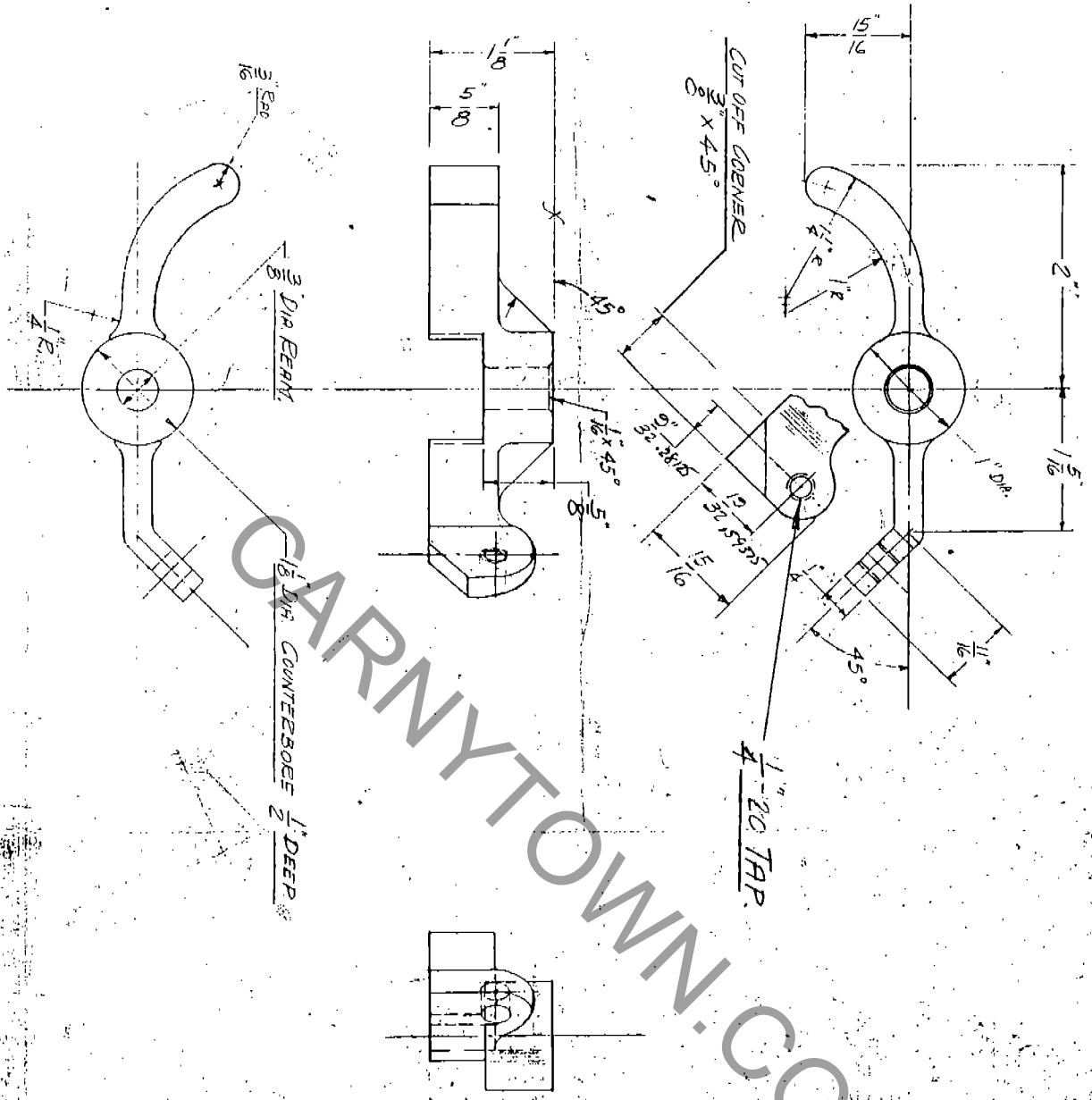


| | | |
|-----|---|-------------------|
| 77 | 2 | Handwritten notes |
| 78 | 2 | Handwritten notes |
| 79 | 2 | Handwritten notes |
| 80 | 2 | Handwritten notes |
| 81 | 2 | Handwritten notes |
| 82 | 2 | Handwritten notes |
| 83 | 2 | Handwritten notes |
| 84 | 2 | Handwritten notes |
| 85 | 2 | Handwritten notes |
| 86 | 2 | Handwritten notes |
| 87 | 2 | Handwritten notes |
| 88 | 2 | Handwritten notes |
| 89 | 2 | Handwritten notes |
| 90 | 2 | Handwritten notes |
| 91 | 2 | Handwritten notes |
| 92 | 2 | Handwritten notes |
| 93 | 2 | Handwritten notes |
| 94 | 2 | Handwritten notes |
| 95 | 2 | Handwritten notes |
| 96 | 2 | Handwritten notes |
| 97 | 2 | Handwritten notes |
| 98 | 2 | Handwritten notes |
| 99 | 2 | Handwritten notes |
| 100 | 2 | Handwritten notes |

| No. | Description | Quantity | Unit | Remarks |
|-----|-------------------|----------|------|---------|
| 1 | Handwritten notes | | | |
| 2 | Handwritten notes | | | |
| 3 | Handwritten notes | | | |
| 4 | Handwritten notes | | | |
| 5 | Handwritten notes | | | |
| 6 | Handwritten notes | | | |
| 7 | Handwritten notes | | | |
| 8 | Handwritten notes | | | |
| 9 | Handwritten notes | | | |
| 10 | Handwritten notes | | | |
| 11 | Handwritten notes | | | |
| 12 | Handwritten notes | | | |
| 13 | Handwritten notes | | | |
| 14 | Handwritten notes | | | |
| 15 | Handwritten notes | | | |
| 16 | Handwritten notes | | | |
| 17 | Handwritten notes | | | |
| 18 | Handwritten notes | | | |
| 19 | Handwritten notes | | | |
| 20 | Handwritten notes | | | |
| 21 | Handwritten notes | | | |
| 22 | Handwritten notes | | | |
| 23 | Handwritten notes | | | |
| 24 | Handwritten notes | | | |
| 25 | Handwritten notes | | | |
| 26 | Handwritten notes | | | |
| 27 | Handwritten notes | | | |
| 28 | Handwritten notes | | | |
| 29 | Handwritten notes | | | |
| 30 | Handwritten notes | | | |
| 31 | Handwritten notes | | | |
| 32 | Handwritten notes | | | |
| 33 | Handwritten notes | | | |
| 34 | Handwritten notes | | | |
| 35 | Handwritten notes | | | |
| 36 | Handwritten notes | | | |
| 37 | Handwritten notes | | | |
| 38 | Handwritten notes | | | |
| 39 | Handwritten notes | | | |
| 40 | Handwritten notes | | | |
| 41 | Handwritten notes | | | |
| 42 | Handwritten notes | | | |
| 43 | Handwritten notes | | | |
| 44 | Handwritten notes | | | |
| 45 | Handwritten notes | | | |
| 46 | Handwritten notes | | | |
| 47 | Handwritten notes | | | |
| 48 | Handwritten notes | | | |
| 49 | Handwritten notes | | | |
| 50 | Handwritten notes | | | |
| 51 | Handwritten notes | | | |
| 52 | Handwritten notes | | | |
| 53 | Handwritten notes | | | |
| 54 | Handwritten notes | | | |
| 55 | Handwritten notes | | | |
| 56 | Handwritten notes | | | |
| 57 | Handwritten notes | | | |
| 58 | Handwritten notes | | | |
| 59 | Handwritten notes | | | |
| 60 | Handwritten notes | | | |
| 61 | Handwritten notes | | | |
| 62 | Handwritten notes | | | |
| 63 | Handwritten notes | | | |
| 64 | Handwritten notes | | | |
| 65 | Handwritten notes | | | |
| 66 | Handwritten notes | | | |
| 67 | Handwritten notes | | | |
| 68 | Handwritten notes | | | |
| 69 | Handwritten notes | | | |
| 70 | Handwritten notes | | | |
| 71 | Handwritten notes | | | |
| 72 | Handwritten notes | | | |
| 73 | Handwritten notes | | | |
| 74 | Handwritten notes | | | |
| 75 | Handwritten notes | | | |
| 76 | Handwritten notes | | | |
| 77 | Handwritten notes | | | |
| 78 | Handwritten notes | | | |
| 79 | Handwritten notes | | | |
| 80 | Handwritten notes | | | |
| 81 | Handwritten notes | | | |
| 82 | Handwritten notes | | | |
| 83 | Handwritten notes | | | |
| 84 | Handwritten notes | | | |
| 85 | Handwritten notes | | | |
| 86 | Handwritten notes | | | |
| 87 | Handwritten notes | | | |
| 88 | Handwritten notes | | | |
| 89 | Handwritten notes | | | |
| 90 | Handwritten notes | | | |
| 91 | Handwritten notes | | | |
| 92 | Handwritten notes | | | |
| 93 | Handwritten notes | | | |
| 94 | Handwritten notes | | | |
| 95 | Handwritten notes | | | |
| 96 | Handwritten notes | | | |
| 97 | Handwritten notes | | | |
| 98 | Handwritten notes | | | |
| 99 | Handwritten notes | | | |
| 100 | Handwritten notes | | | |

ALLAN HESSHELL CO. INC.
 1000 N. 10th St., Suite 100
 Phoenix, Arizona 85006
 Phone: 602-944-1111
 Fax: 602-944-1112

| | | | |
|----|------|----------|------|
| 7 | DATE | APPROVED | DATE |
| 8 | | | |
| 9 | | | |
| 10 | | | |



MATERIAL: PHOSPHOR BRONZE GR50
 SAE STANDARD #64 (ANNEAL 785-815; TM 9741)
 PHOSPHORUS 0.05 TO 0.45; ZINC, MAX. 0.75; LEAD 3.00 (1)
 PATTERN HD-392 - No longer Available

| | | | |
|---------------------------|--------------------|-------------|----------|
| ITEM NO. | 6 | DESCRIPTION | SEE NOTE |
| ALLAN HERSCHELL CO., INC. | | | |
| BUFFALO, N. Y. | | | |
| NAME | PICKUP SHOE | | |
| USED ON | PORTABLE DARK RIDE | | |
| DESIGNED BY | | DATE | MATERIAL |
| DRAWN BY | JT | DATE | SCALE |
| CHECKED BY | | DATE | PART NO. |
| | | | HD-392 |