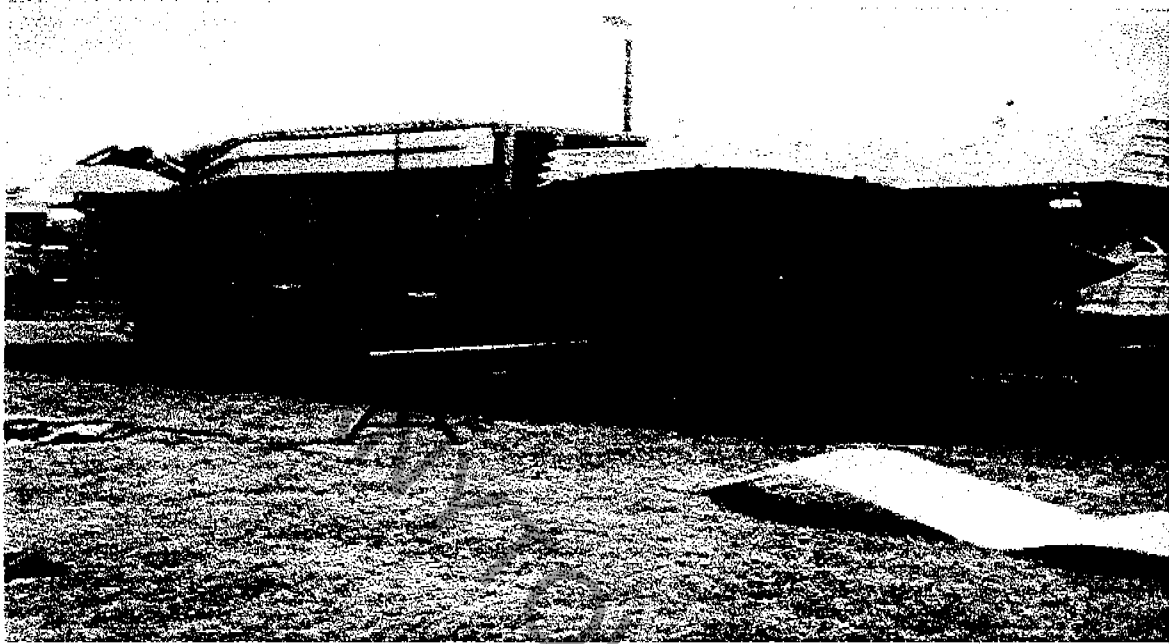


A and E Amusements

5232

MFG: A & E AMUSEMENTS  
NAME: SATURN  
RIDE: NON-KIDDIE

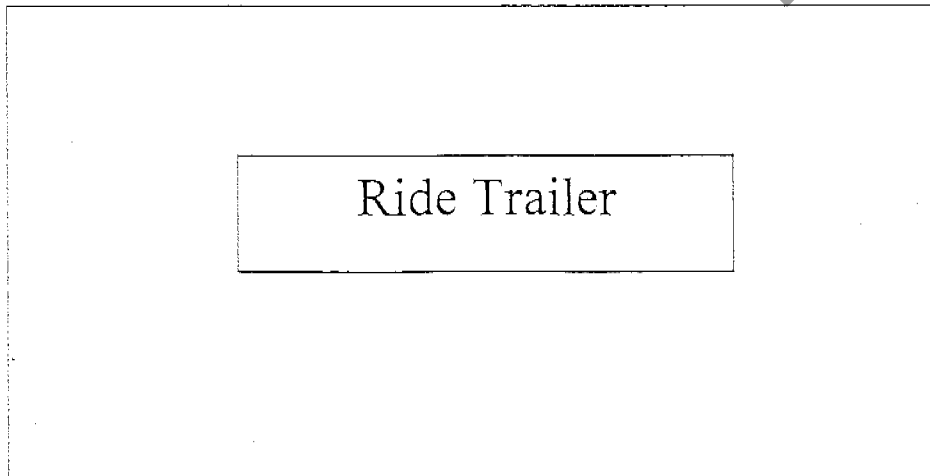
# Saturn Setup



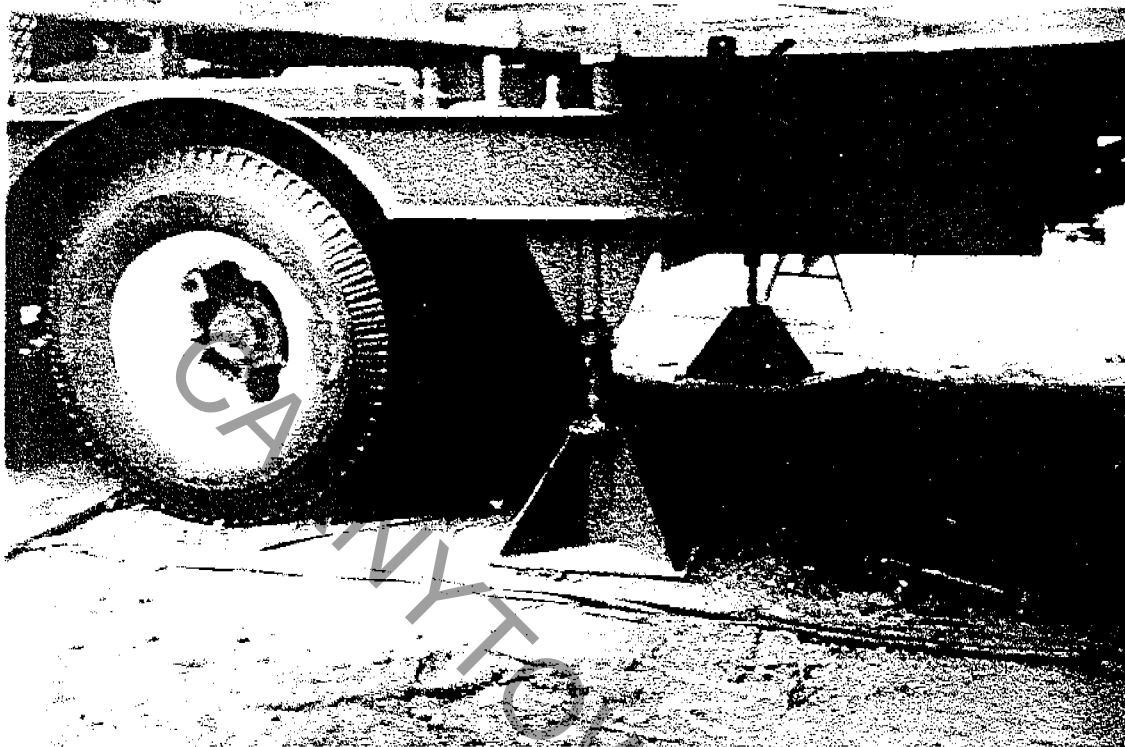
Spot Ride on Location  
Start Leveling Ride

Pull ride into center with rear of trailer facing midway. Check side to side level of trailer. Blocking under tires to bring to approximate level if needed.

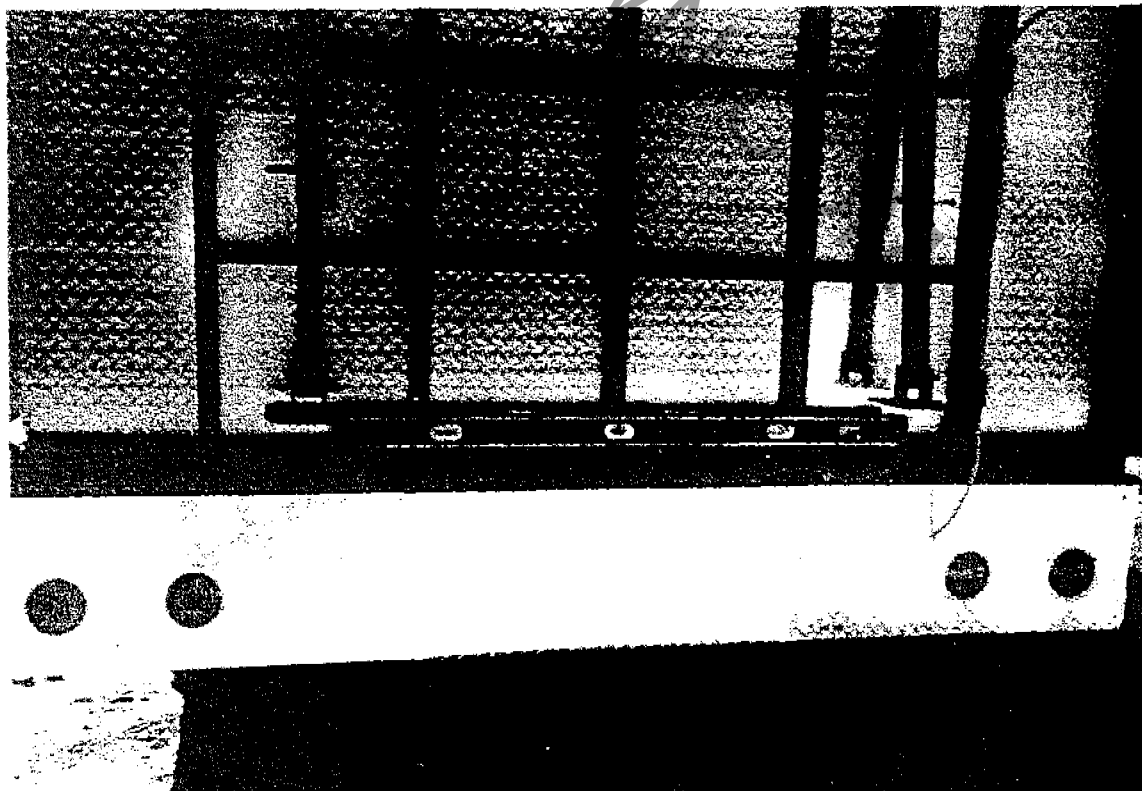
Lot Size 50ft x 50ft



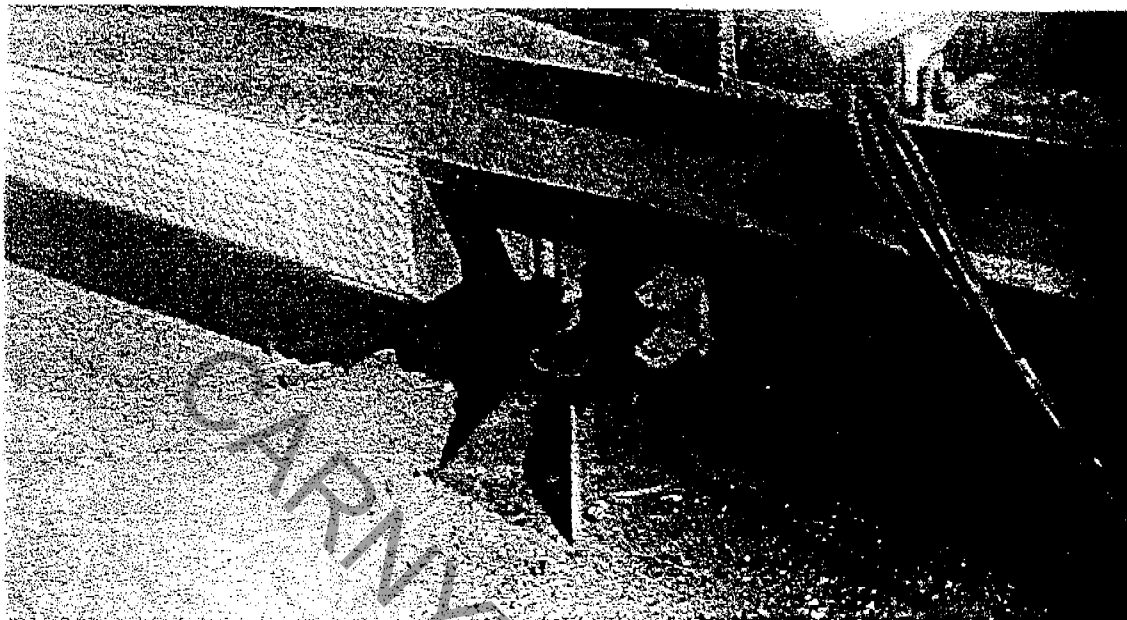
Install leveling stands at rear of ride and lower screws until snug.  
(If not level sideways wrench level)



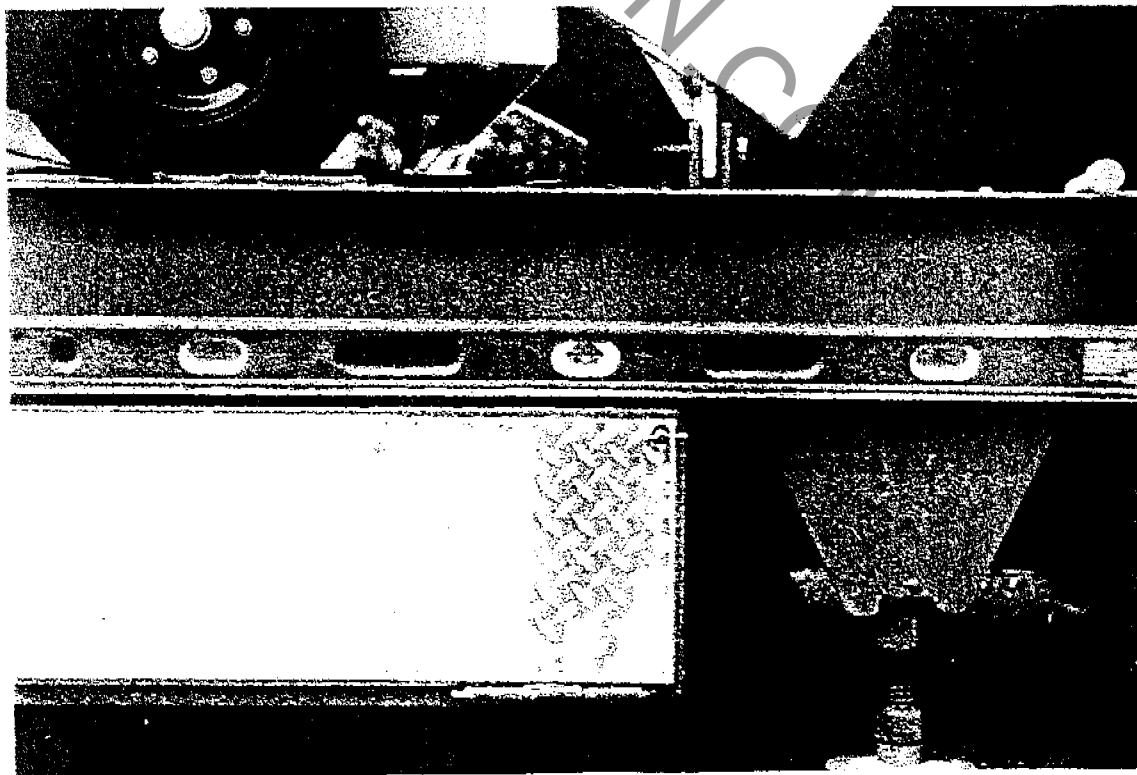
Be sure to check with level

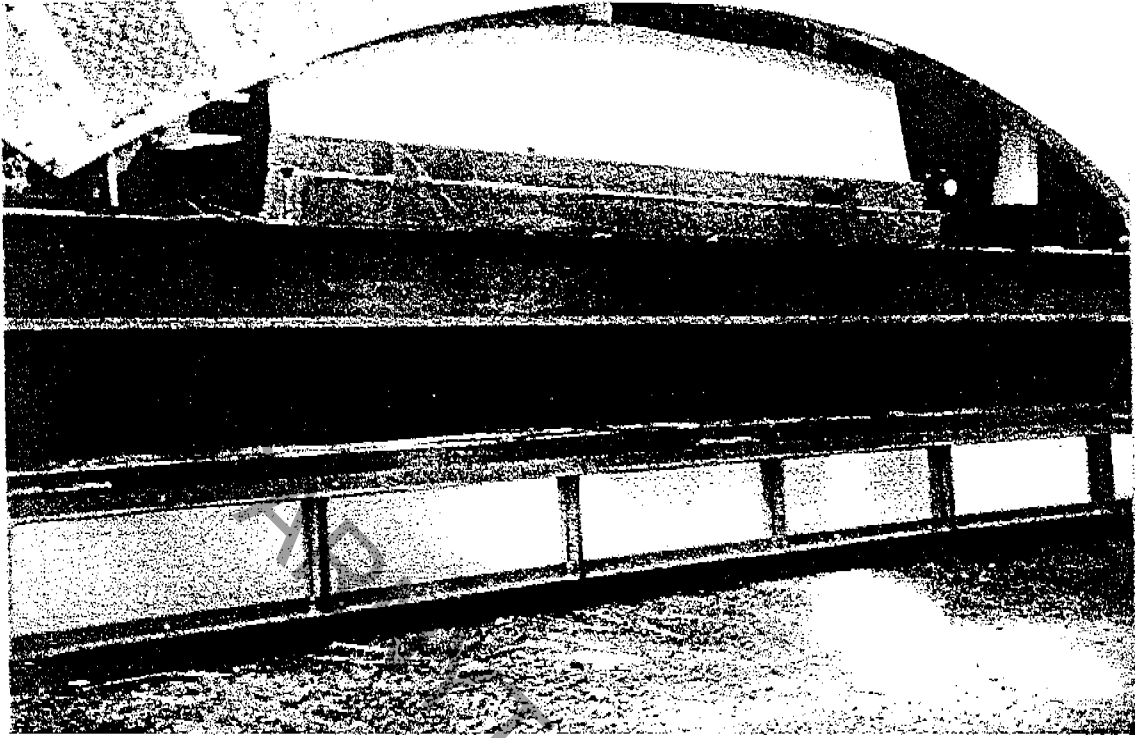


Raise front of trailer until level & place center stands under ride.  
Snug screws.

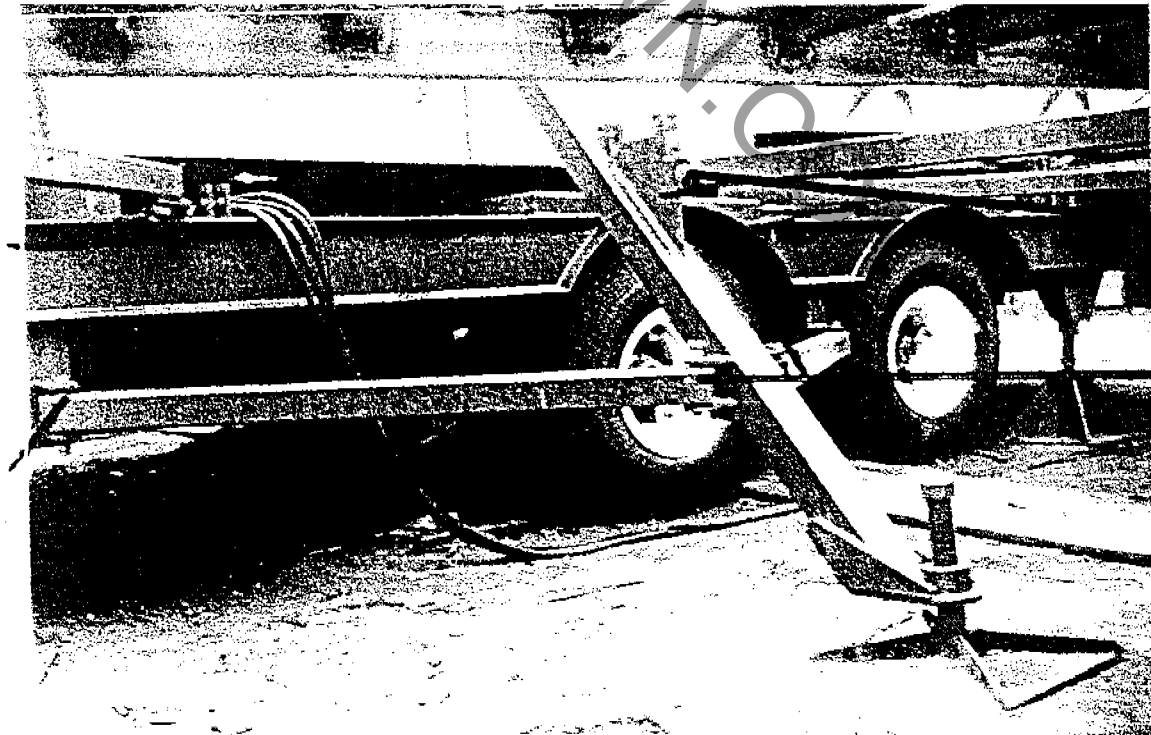


Check with level

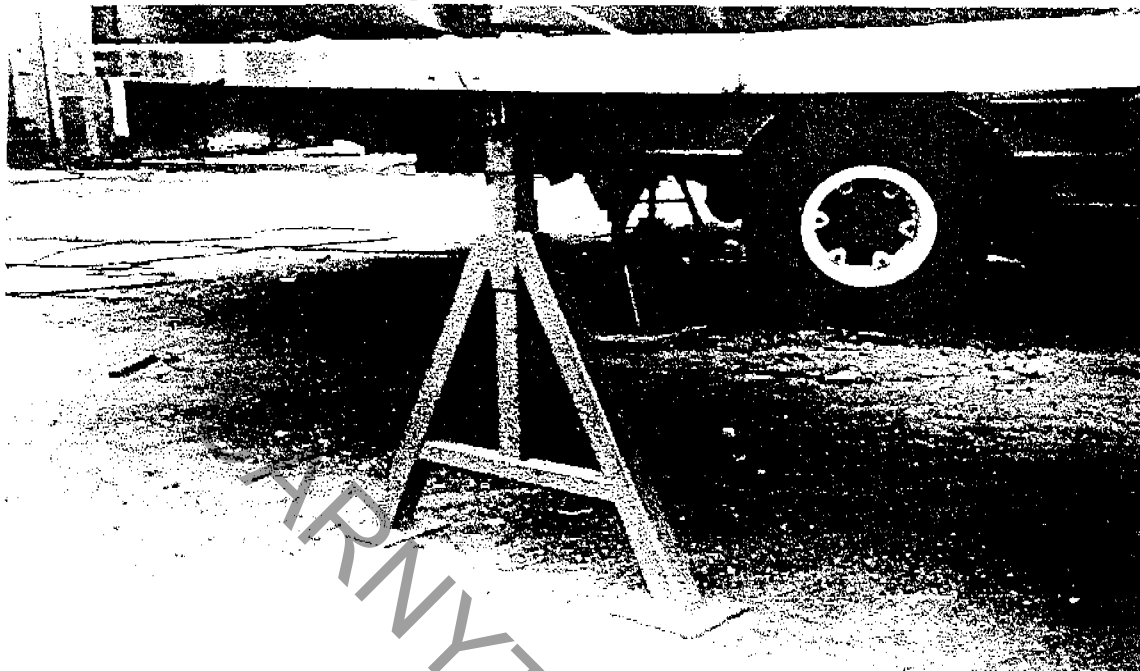




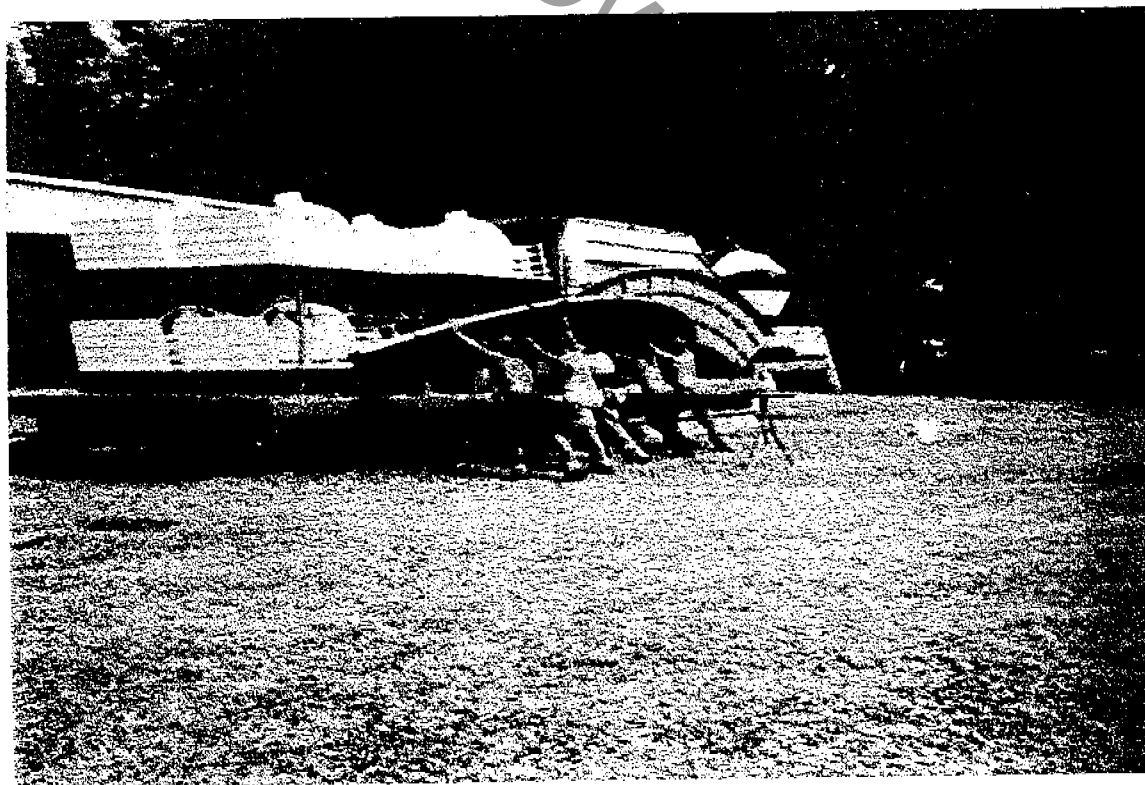
Remove outriggers from storage and Install, screw jacks snug.  
Pin & Key braces.



Remove platform supports and install



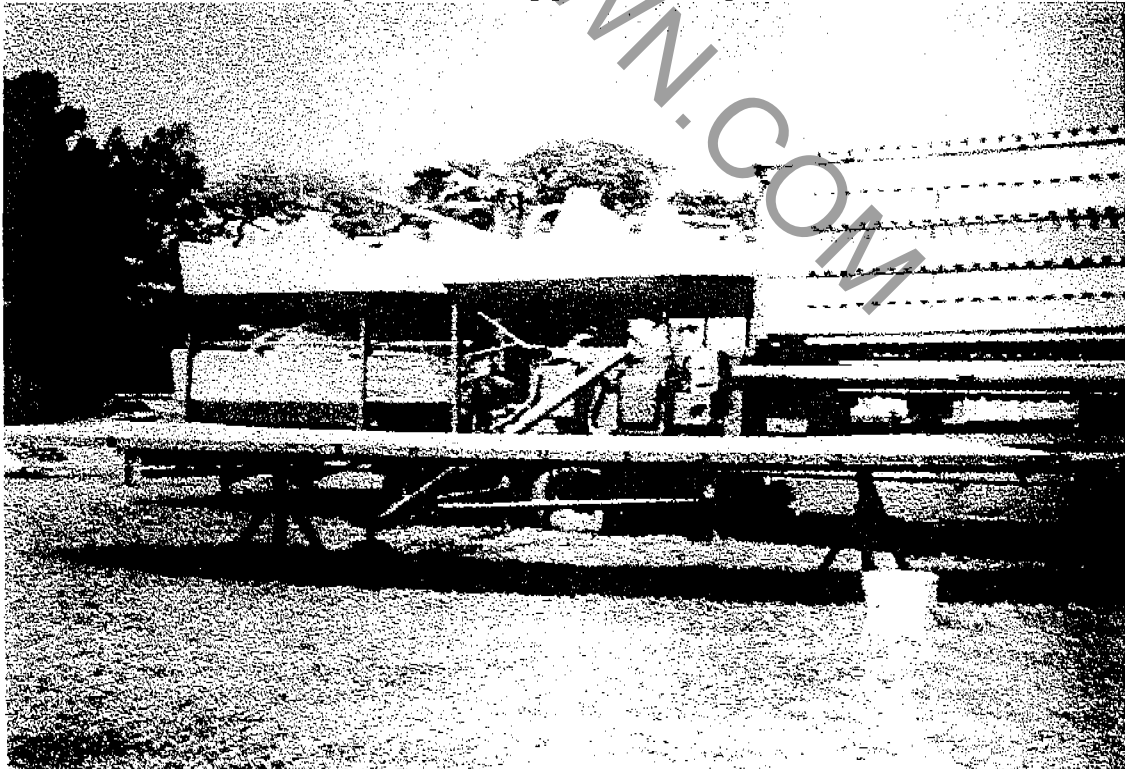
Disconnect platform latches and swing down platforms  
Rear platform must be first



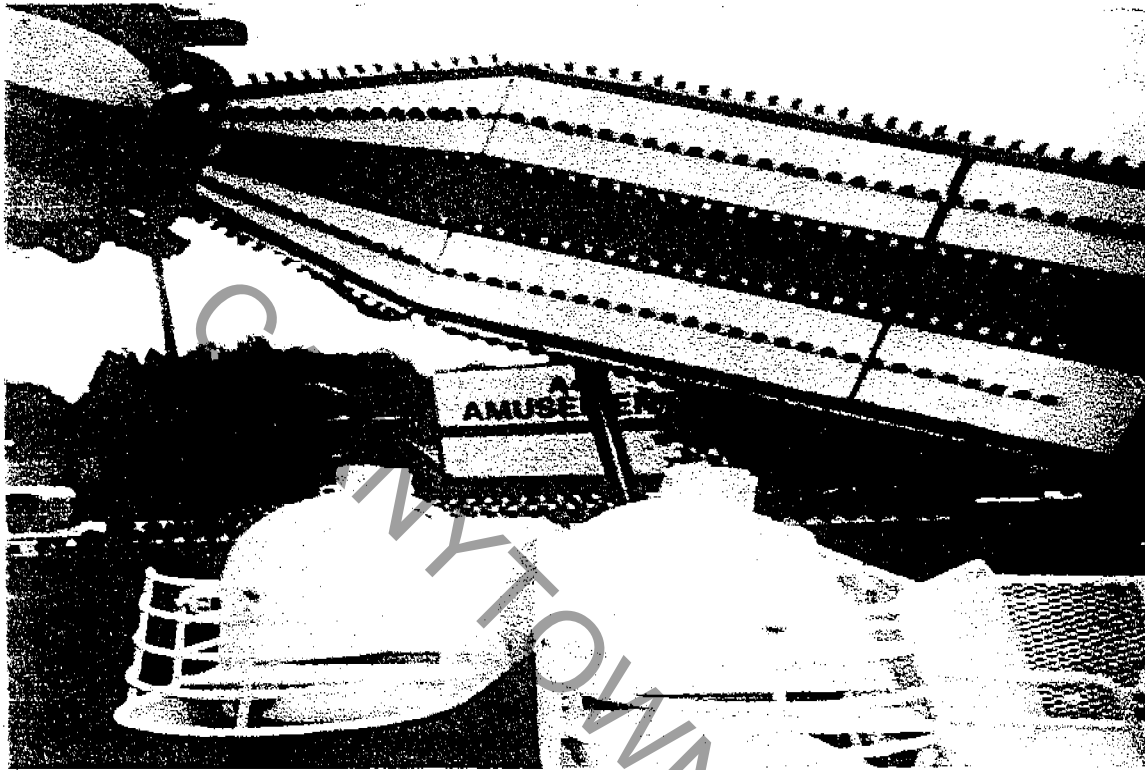
Remove platform hinge pins then place platforms in position and secure with  $\frac{1}{2}$ " pins.



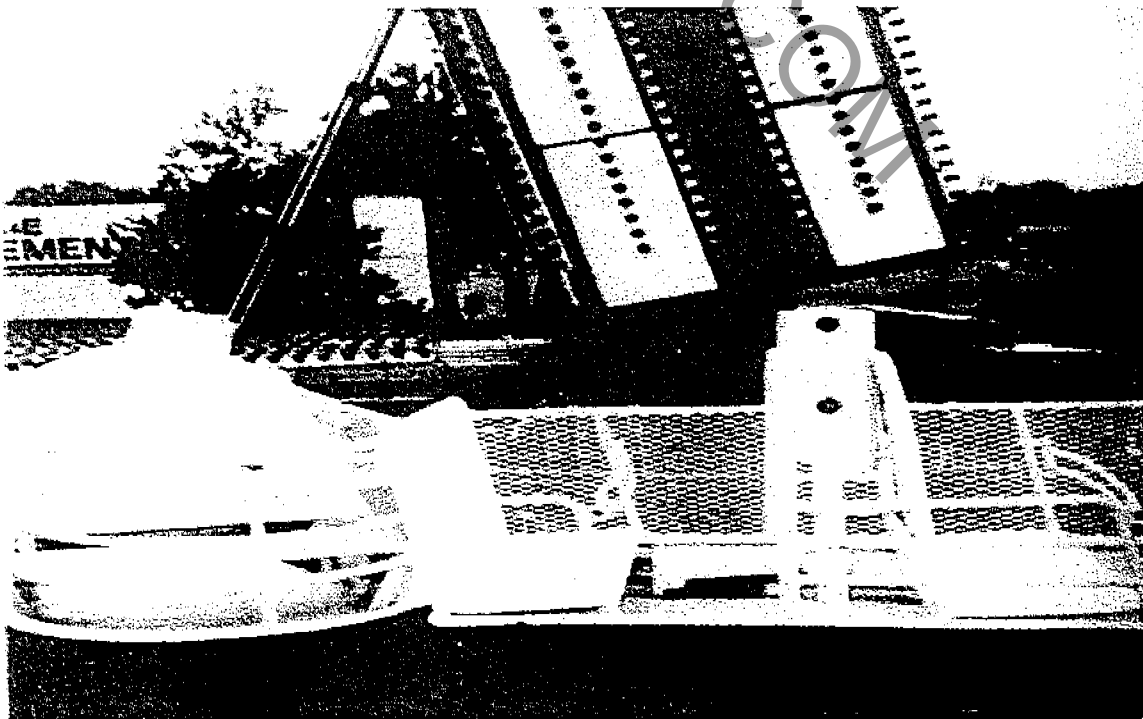
Raise and lower platform supports until platforms are level



Remove cars from racks and place around platforms  
Store racks under platforms Lower step platform  
Start raising center, when front cylinder is fully extended, release lever  
and close petcock completely



Lift tower control lever and complete raising. Turn off setup power  
motor



**Uncoil leadline and connect**

**Must use minimum 200 amp 3 phase service**

**Turn on main breaker, circulator pump will start**

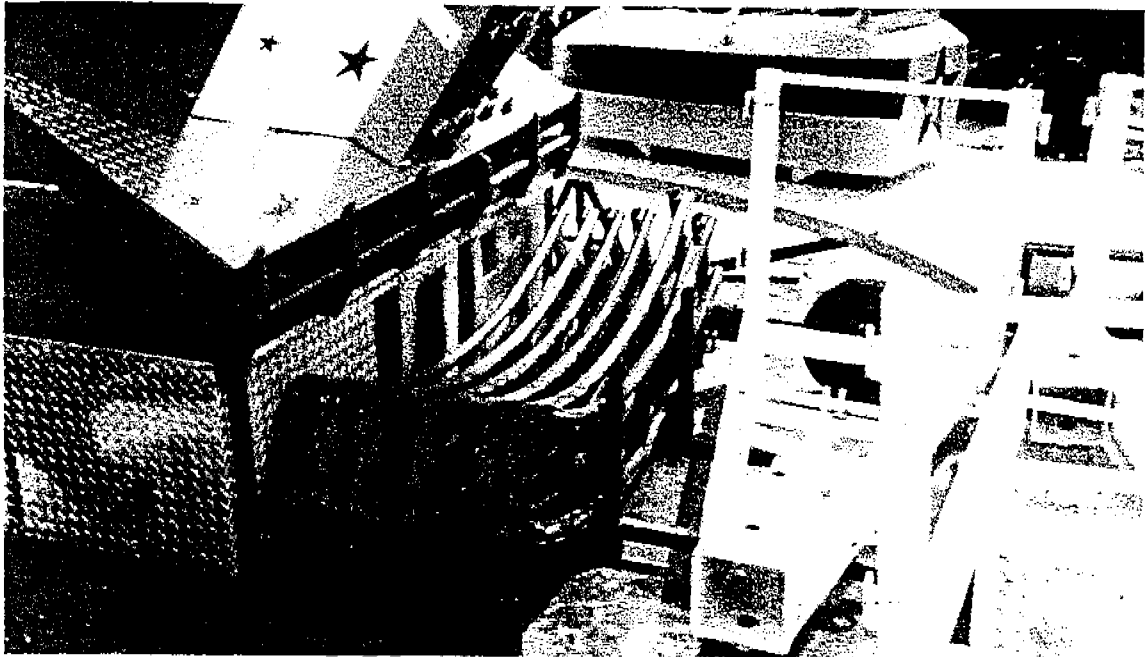
**Momentarily turn on set up pump**

**Check pump rotation**

**Interchange any two hot leads if pump rotation is incorrect**

**All motors are now correctly phased**

CARNYTOWN.COM



Remove track from storage and install around base

Pin track securely



## Install Control Station

Setup control station at foot of entrance

Connect to socket at right rear of step platform

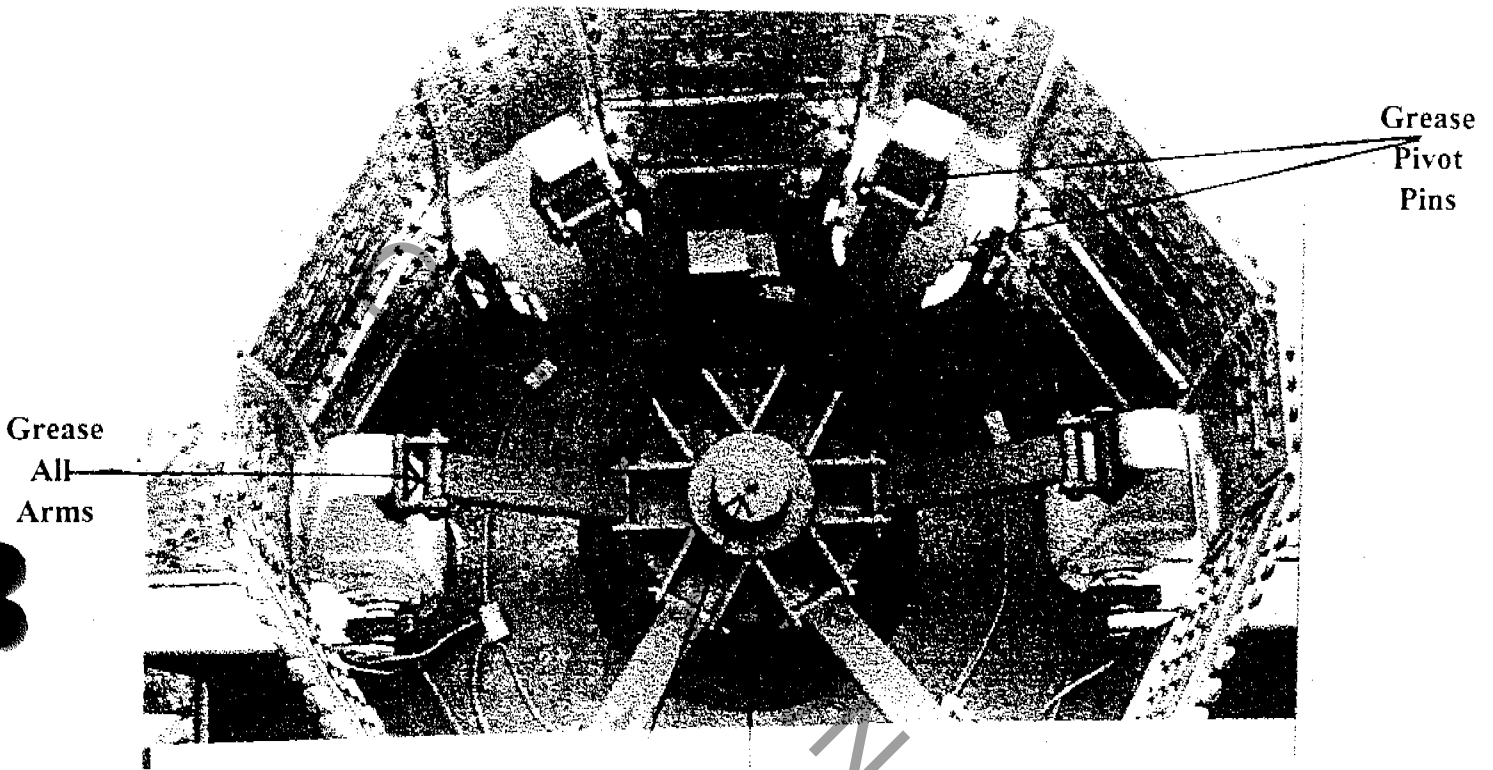


CARNYTTOWN.COM

*Saturn Maintenance*

WEEKLY SERVICE OF STAR FIRE

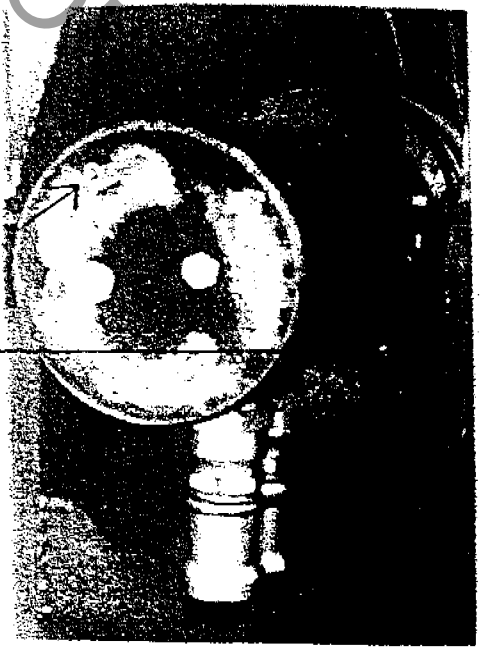
AT ALL GREASE FITTINGS INJECT 2 OR 3 PUMPS WITH A STANDARD GREASE GUN. SEE PHOTOS & WIPE OFF EXCESS GREASE.



Grease  
Collar

Grease  
Zoomer  
Pole

Grease  
Cylinder



WEEKLY SERVICE OF STAR FIRE CONTINUED

---

- \* LUBE THE CHAIN. CHAIN SHOULD HAVE ABOUT 3/4 INCH SLACK IN IT, AND ADJUST TIGHTENER.



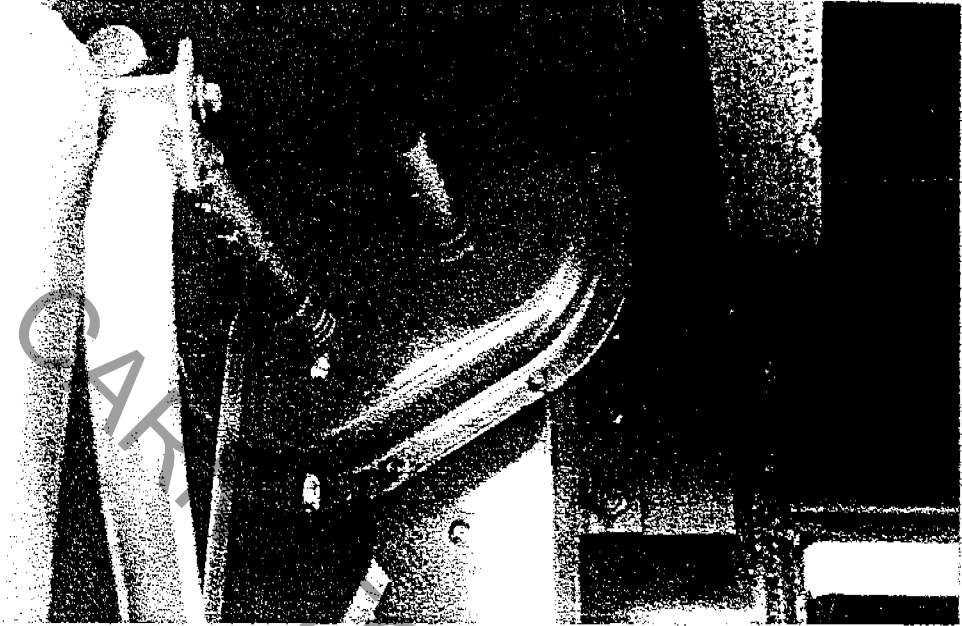
- \* CHECK HYDRAULIC FLUID LEVEL. FILL TO 3 INCHES FROM BOTTOM OF FILL TUBE.

- \* CHECK TRAILER TIRES FOR CORRECT PRESSURE AND EXCESSIVE WEAR.
- \* VISUALLY INSPECT SWEEP PIVOTS, CONNECTING RODS AND MOUNTS FOR CRACKS. ALSO CHECK WISHBONES

\*\*\*\*SPECIAL NOTE: BE SURE TO GREASE MAIN DRIVE BEARING THAT IS LOCATED BELOW THE MAIN DRIVE SPROCKET BEFORE RAISING TOWER.

SEE LARGE BLACK ARROW FOR LOCATION

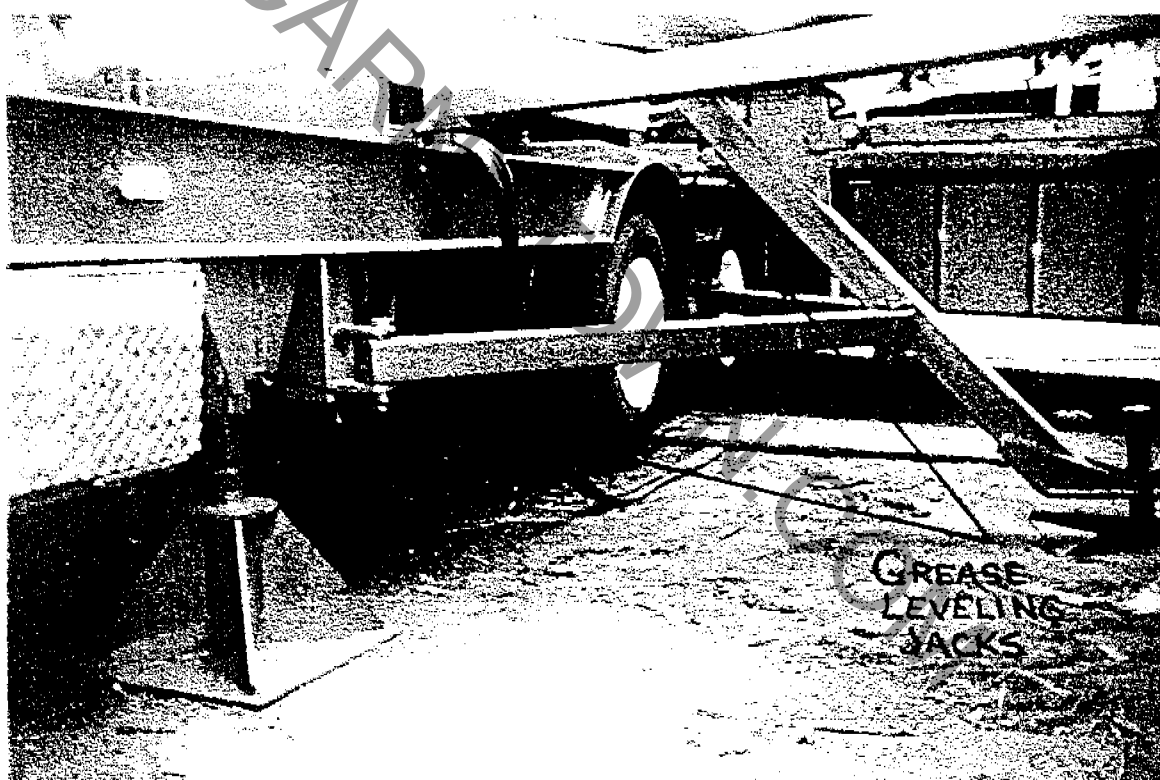
GREASE LANDING GEAR WEEKLY



ALSO GREASE  
DRIVE BEARINGS  
WEEKLY

GREASE LEVELING JACKS WEEKLY

---



PREVENTATIVE MAINTENANCE CHECKS AND SERVICES

---

DAILY;

- 1) CHECK ALL PINS & KEYS THROUGH OUT FOR SIGNS OF WEAR AND OR MISSING KEYS.
- 2) CHECK LIGHTS FOR LOOSE OR BURNT OUT BULBS. ALSO CHECK FOR WATER TRAPPED IN LENSES.
  - A) IF A LARGE # OF BULBS ARE IN-OPERATIVE ON RIDE, TEST CIRCUIT.
  - B) IF ON CROWN /SWEEPS, FUSE ACCESS IS ON TOP CENTER OF CROWN
  - C) IF ON TOWER, FUSE ACCESS IS BEHIND ELECTRICAL ACCESS COVER LOCATED IN FRONT CORNER OF TOWER BASE.B)&C) NON SERVICEABLE BY RIDE OPERATOR. NOTIFY RIDE SUP.
- 3) CHECK FOR LOOSE, FRAYED OR BROKEN WIRING THROUGH-OUT.
- 4) CHECK THAT ALL SUPPORT JACKS ARE TIGHT.
- 5) CHECK LEVEL TO INSURE RIDE HAS NOT SETTLED.
- 6) CHECK THE GROUND BENEATH THE RIDE FOR SIGNS OF OIL LEAKAGE. IF ANY LEAKAGE FOUND ,NOTIFY RIDE SUP.  
(IF EXCESSIVE LEAKS OCCUR STOP RIDE,TURN OFF MAIN BREAKER AND NOTIFY SUPERVISOR IMMEDIATLY.