

MFG: SHOWTOWN MFG. CO  
RIDE: GLASS HOUSE (MARDI GRAS)

Mardi Gras Glass House

CARNYTOWN.COM

Mfg by: Showtown Mfg. Co.  
7029 Nundy Avenue  
Gibsonton, FL 33534

Mardi Gras Glass House

S/n # 1998SHO28FGLA1137

Height: 26 Feet

Depth: 18 Feet

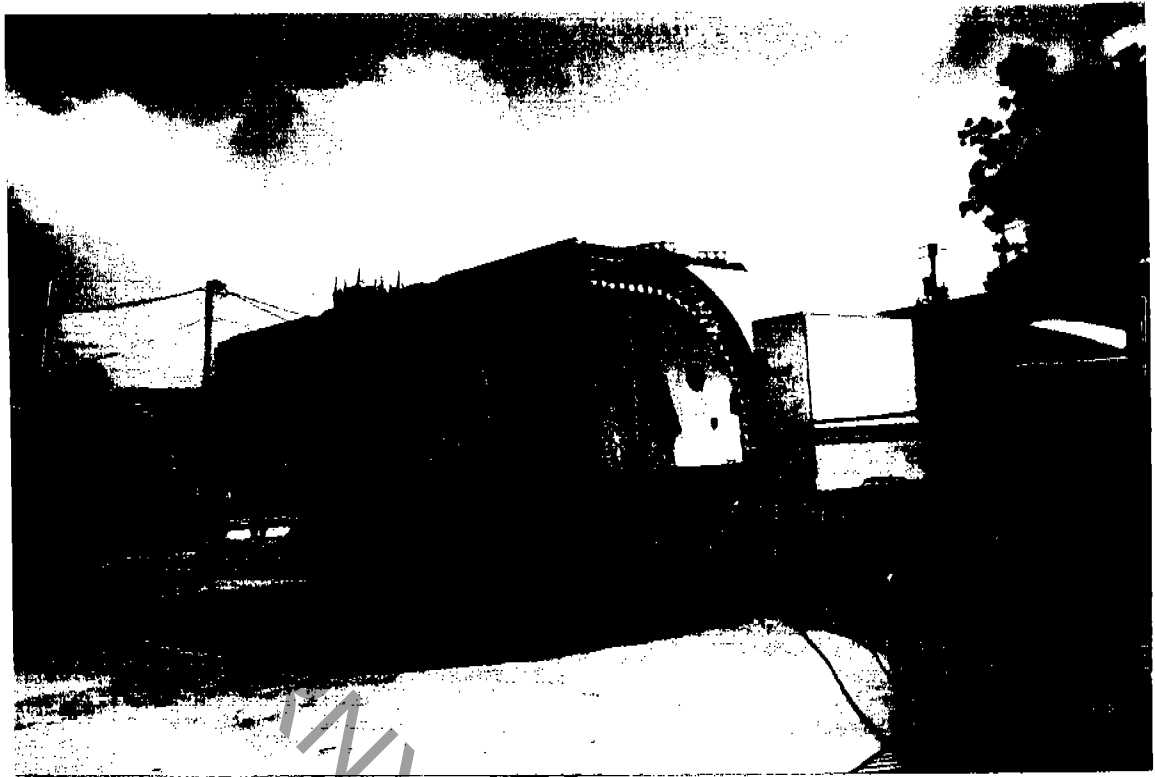
Front Footage: 55 Feet

Distance from front line to midway: 6 Feet

Electrical Requirements: 240 Volt, single phase, (60 Amp)

Trailer: 28' long  
8'6" Wide

CARNYTOWN.COM



1. Level Trailer



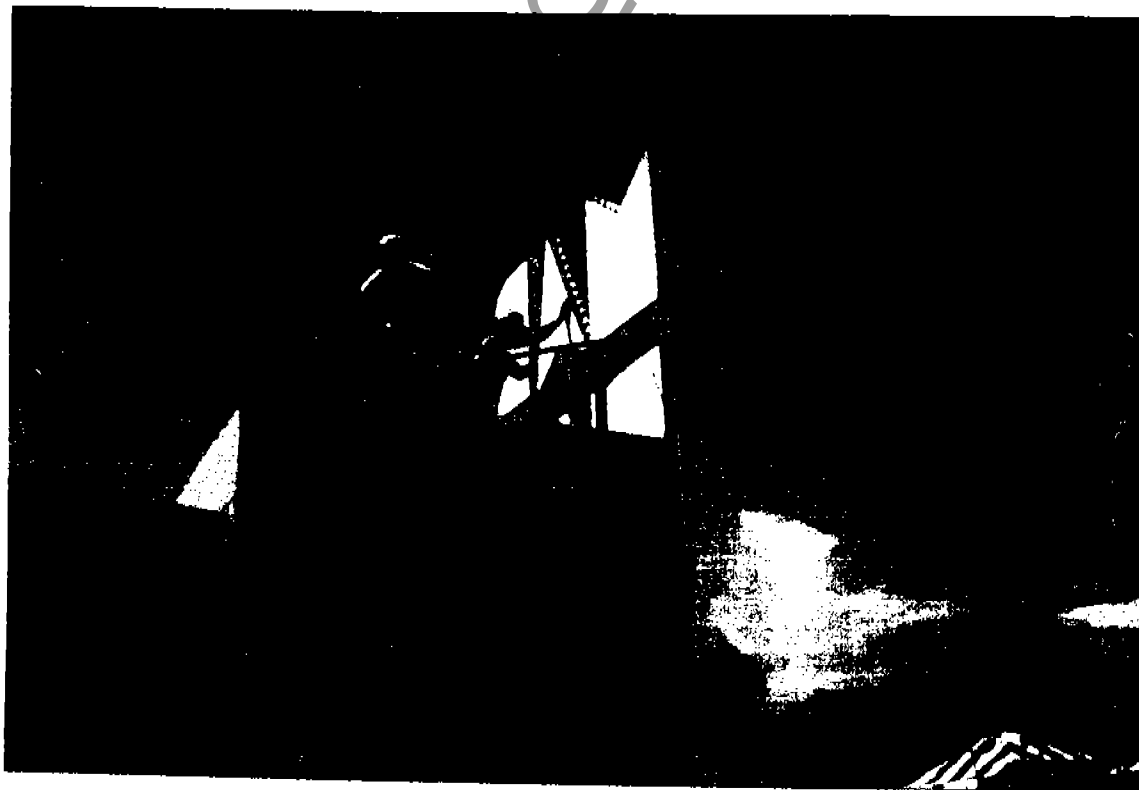
2. Hook up Electrical Power.



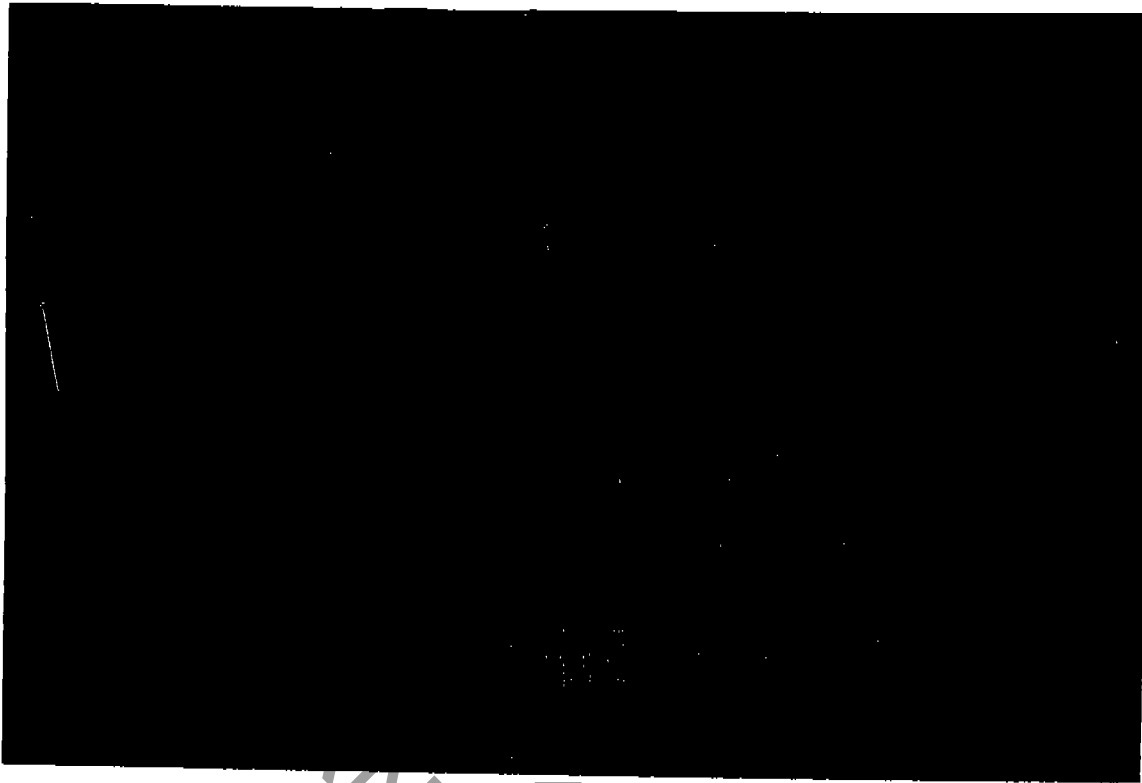
3. Put on front out riggers and attach turnbuckles  
(Hand Tight Only)



4. Fold up top scenery panels. Start from front and unhook safety chains.



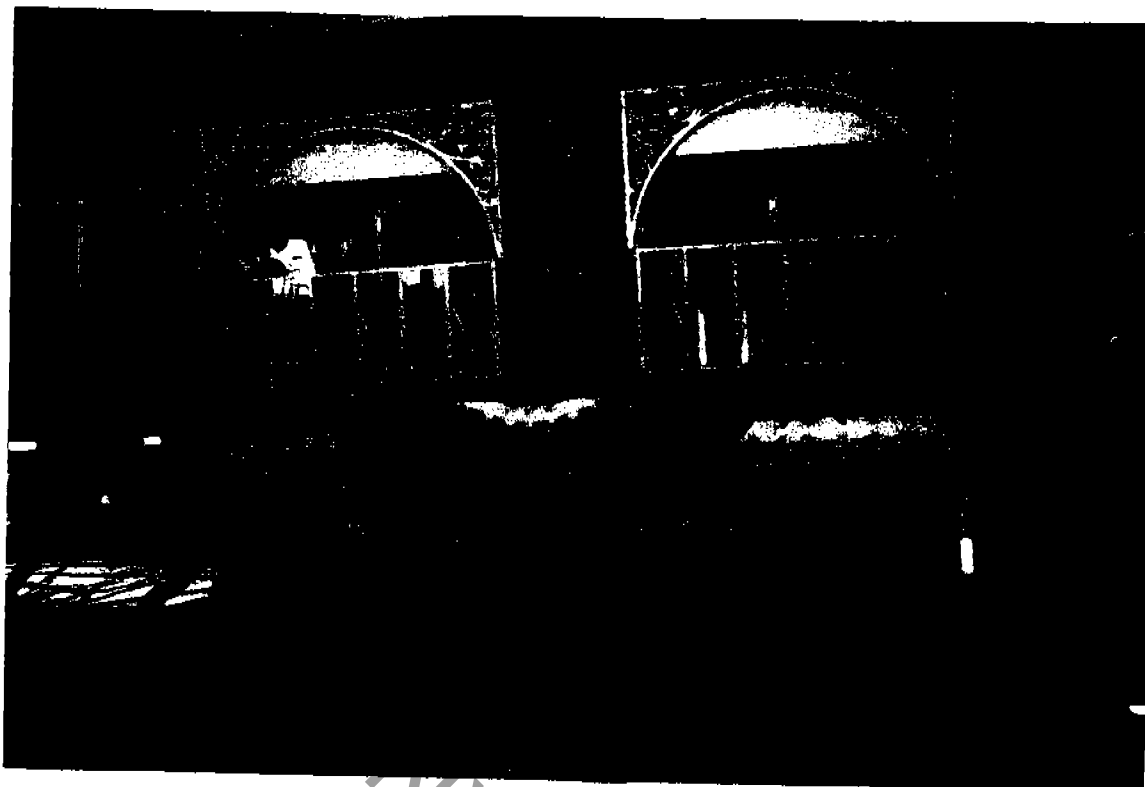
5. Attach support rods and R-key ends  
(2 bars per panel)



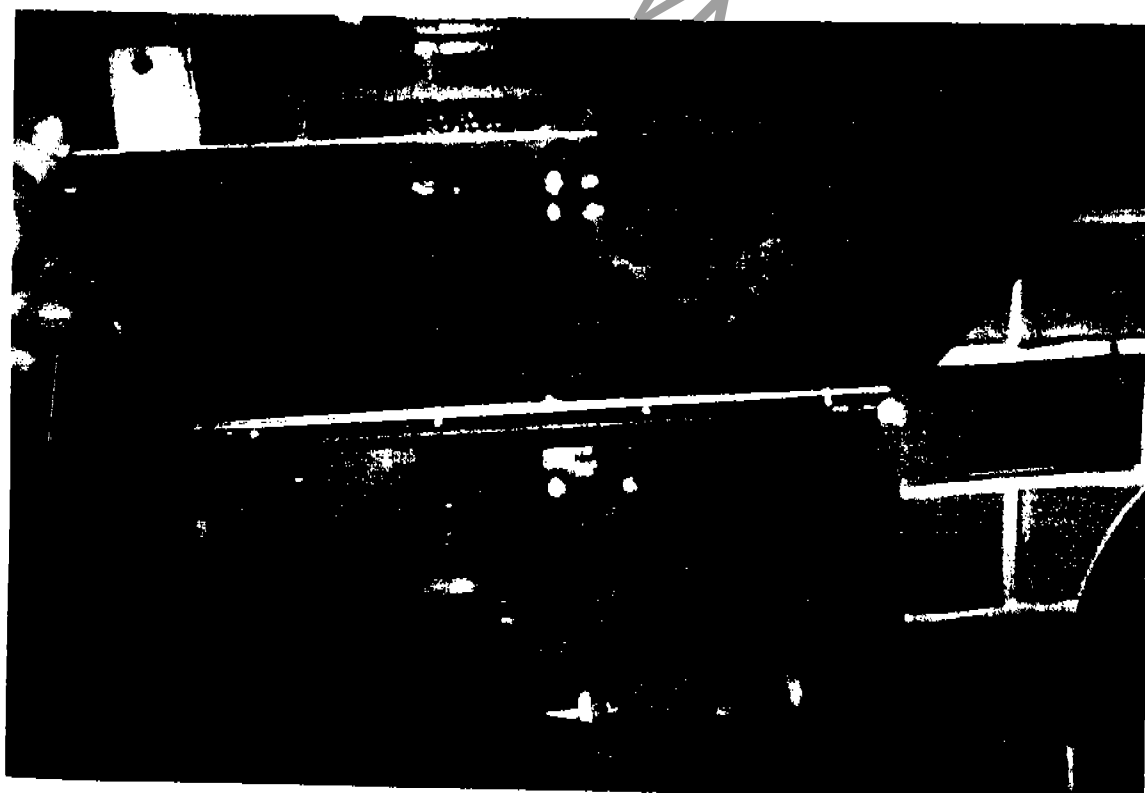
6. Fold out front and rear scenery panels ( 2 support rods front and rear)



7. Fold down entrance panels and level (3 support Jacks)



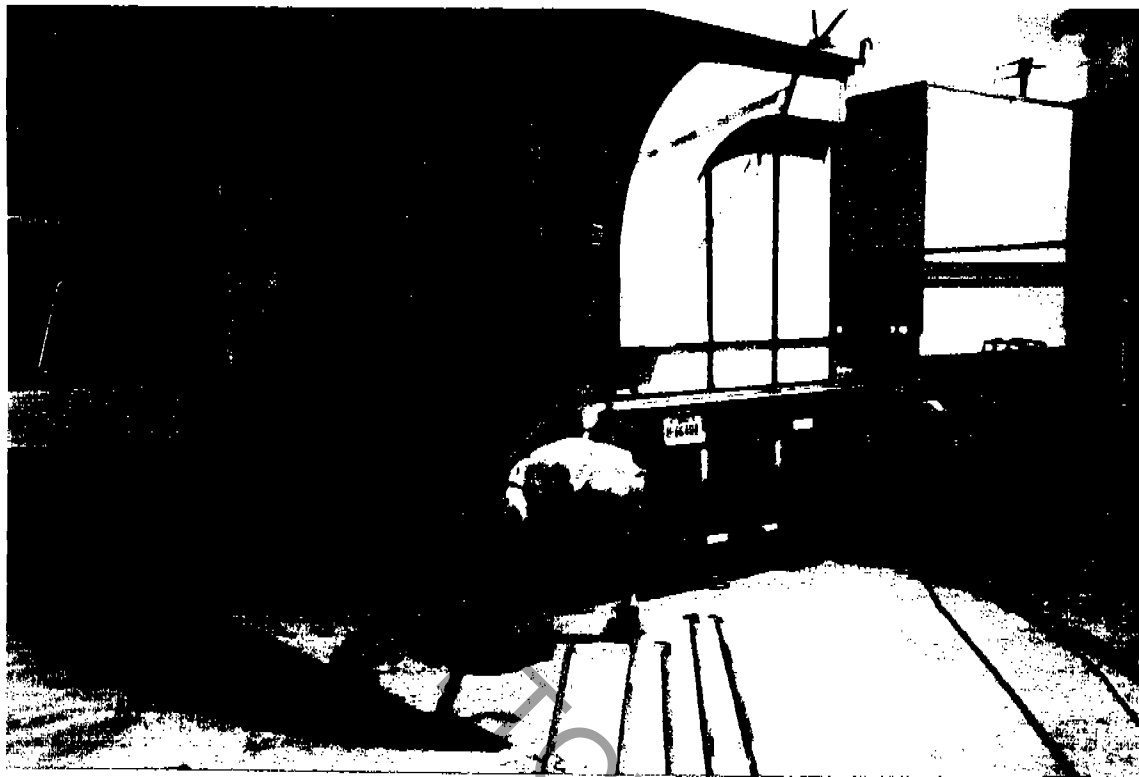
8. Fold up awning and hook (2 support rods)
9. Remove r-key and fold down front marquee.
10. Turn power on and turn pump on. Switch is located in panel.



11. 2 levers control from front to rear.

12. Push levers in (KEEP F/R LEVEL)

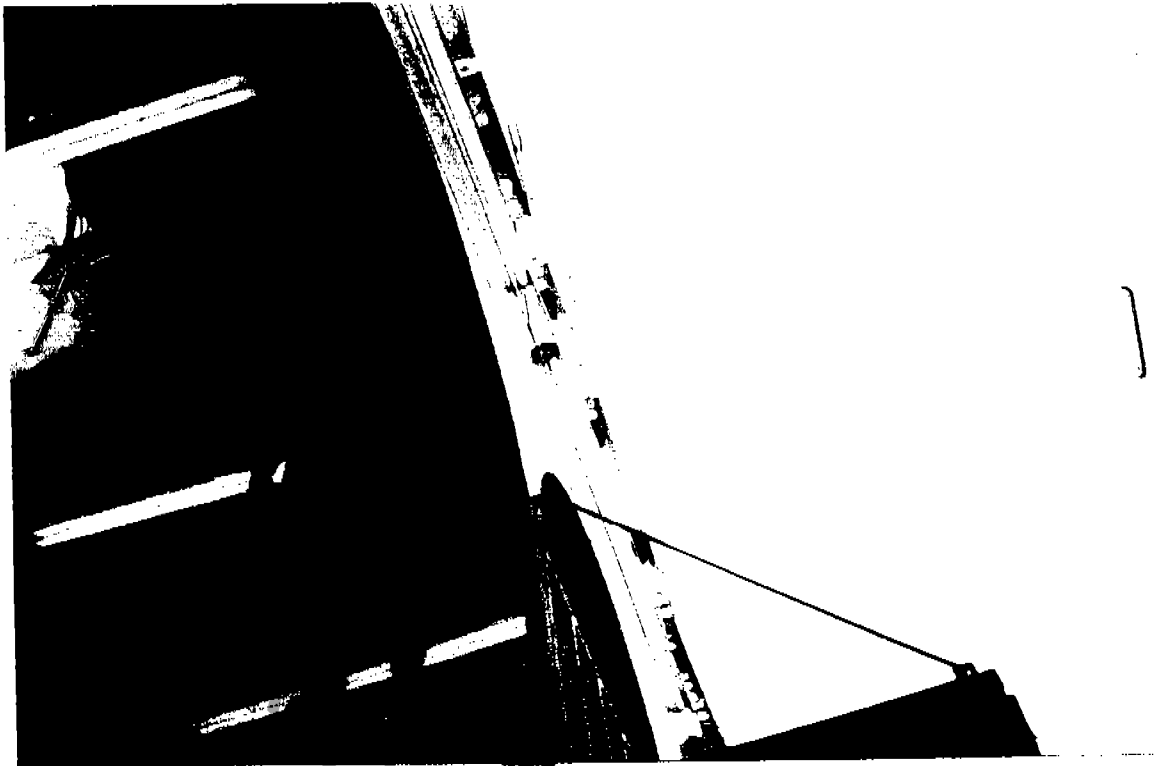
13. Hold levers in until top extends completely



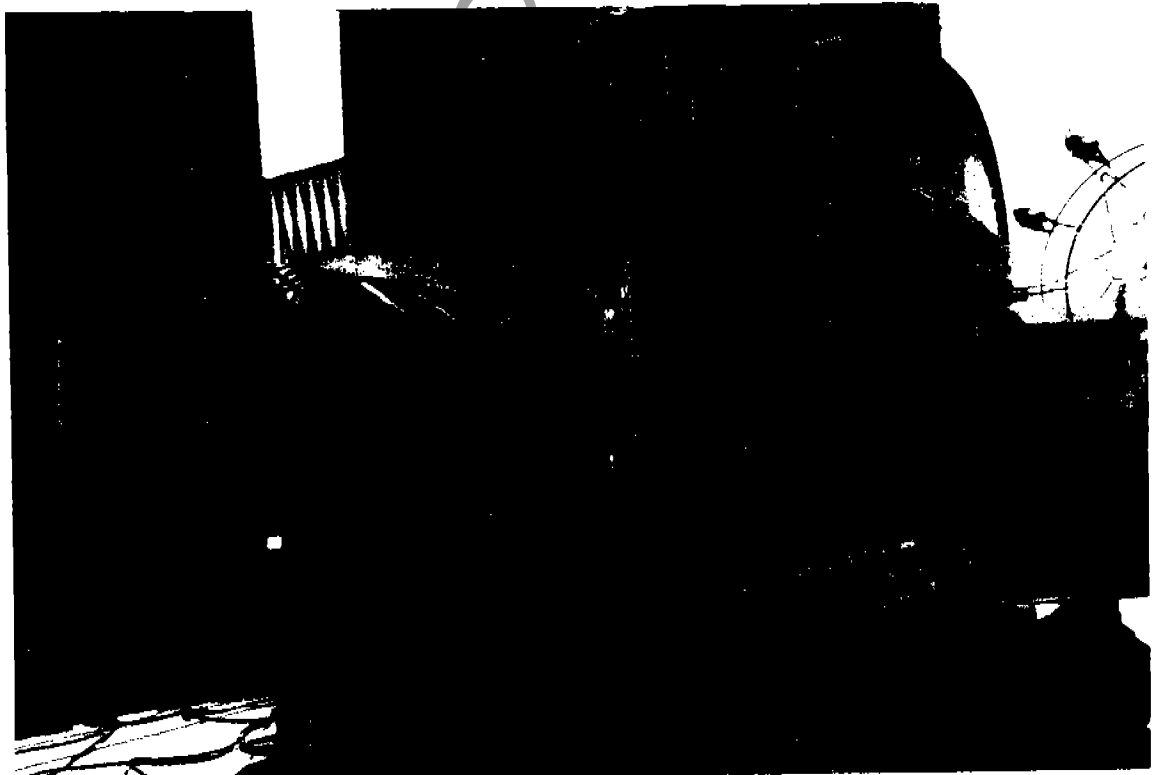
14. Fold down rear out riggers (Turnbuckles hand tight only)



15. Fold rear platform up by hooking winch cable.  
Control is upstairs.



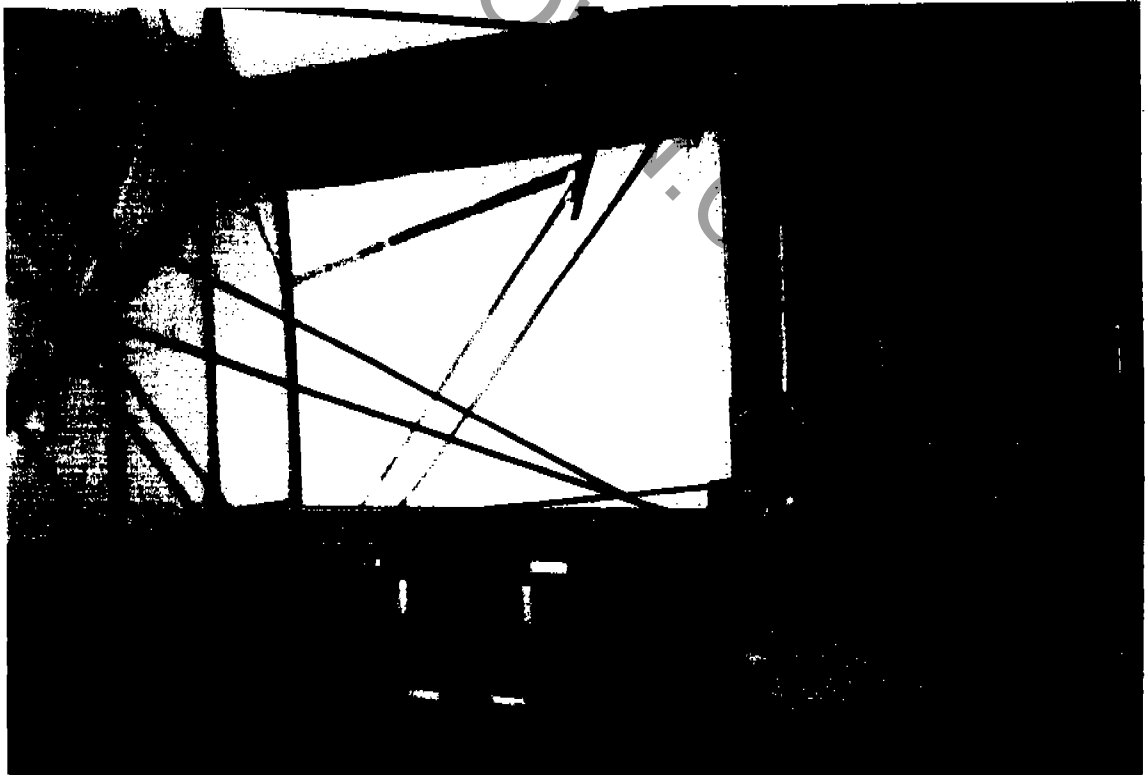
Winch controls



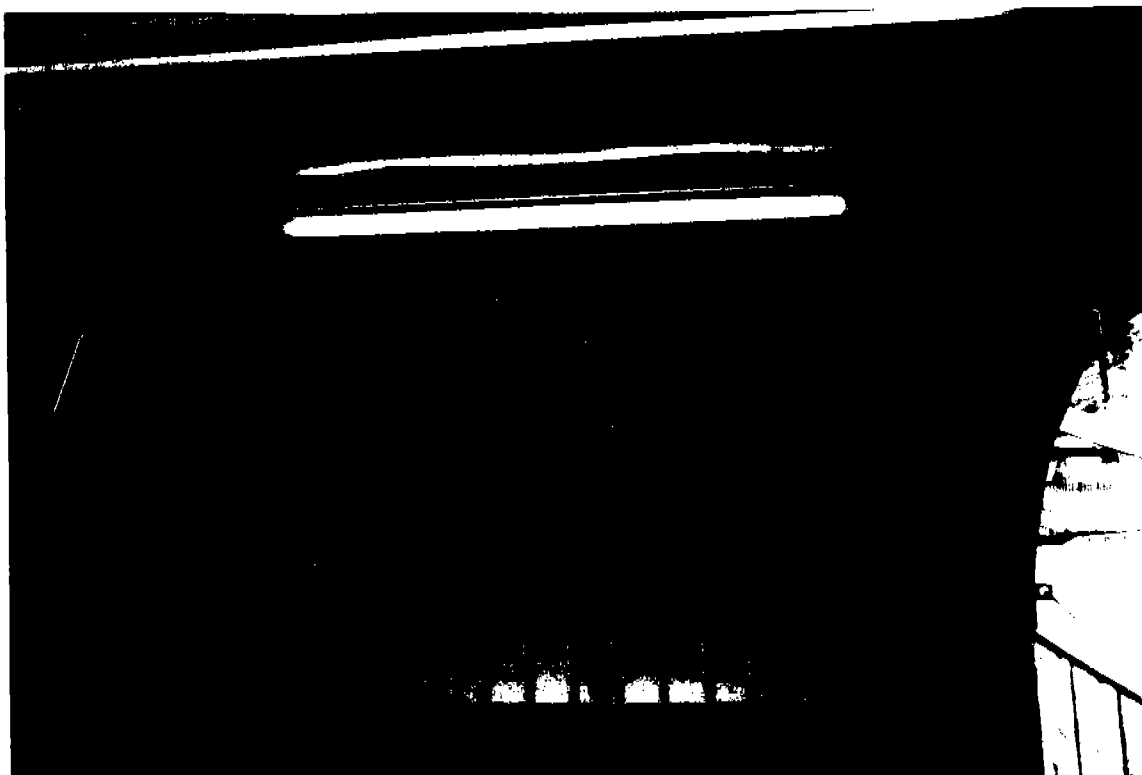
17. Unhook cable and move to slide and lower. There are 2 Jack stands in each corner and level.



18. 2 Platform scenery panels and fence around front platforms.

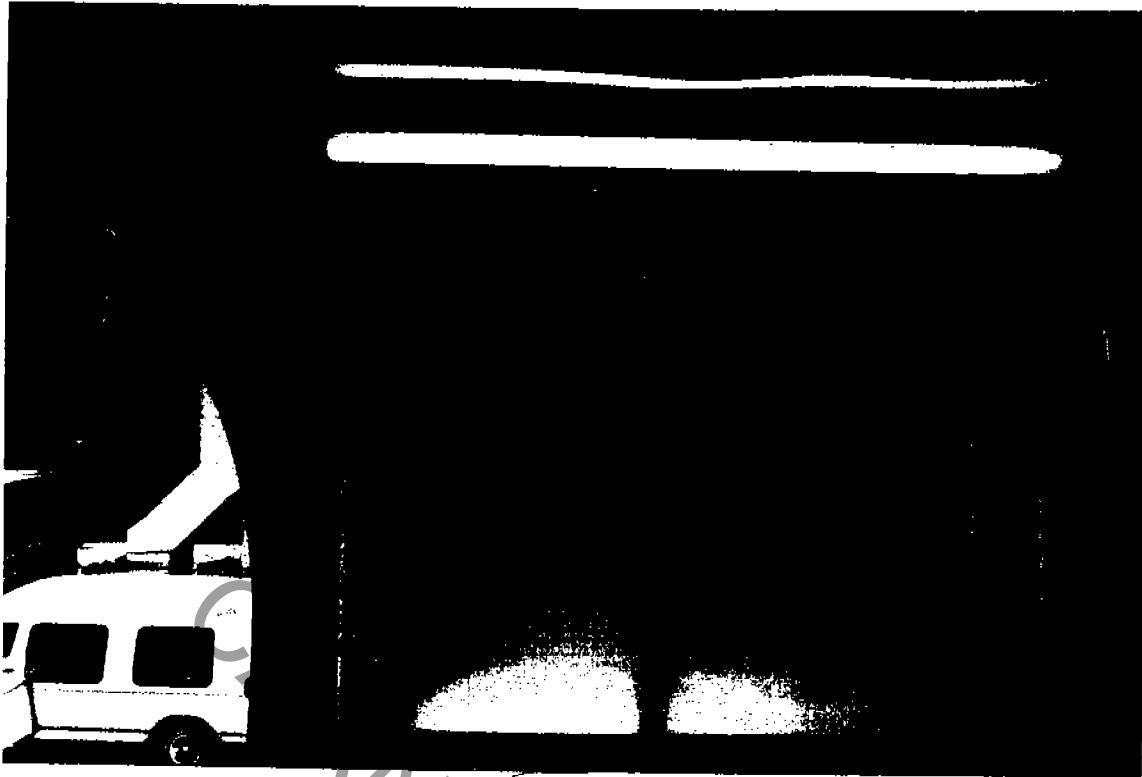


19. Fold out front and rear scenery panels. Hook 5 support bars and r-key ends.

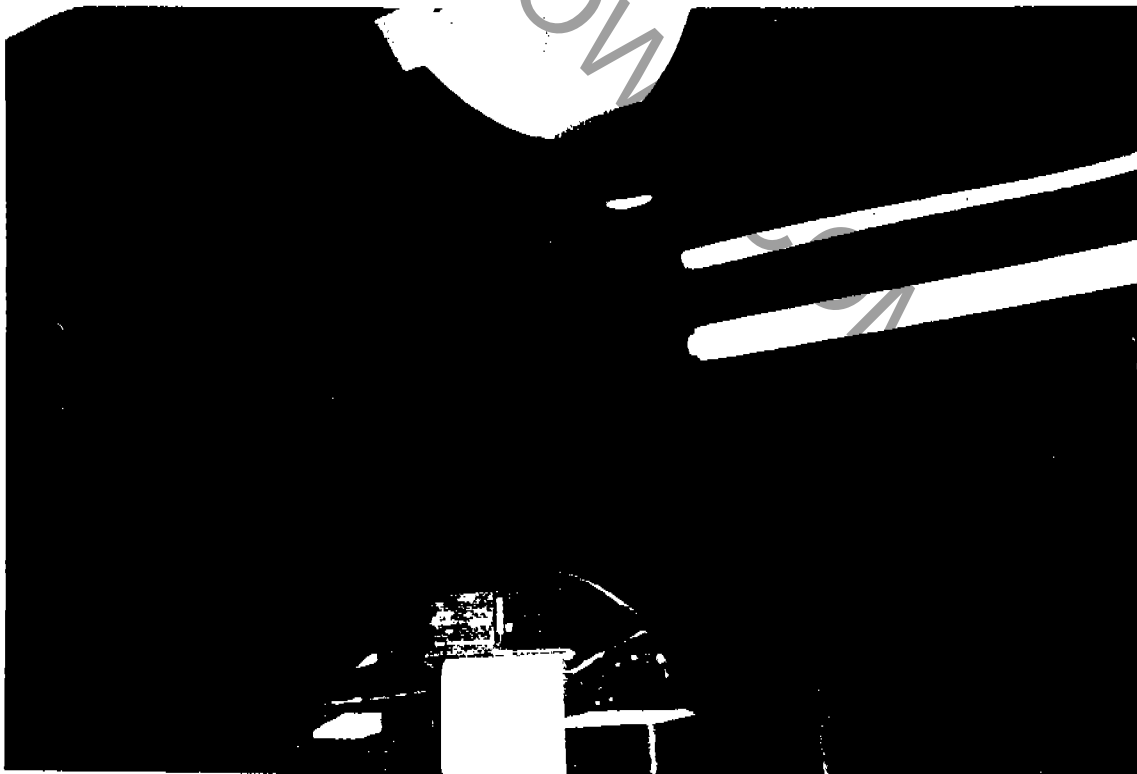


LOW

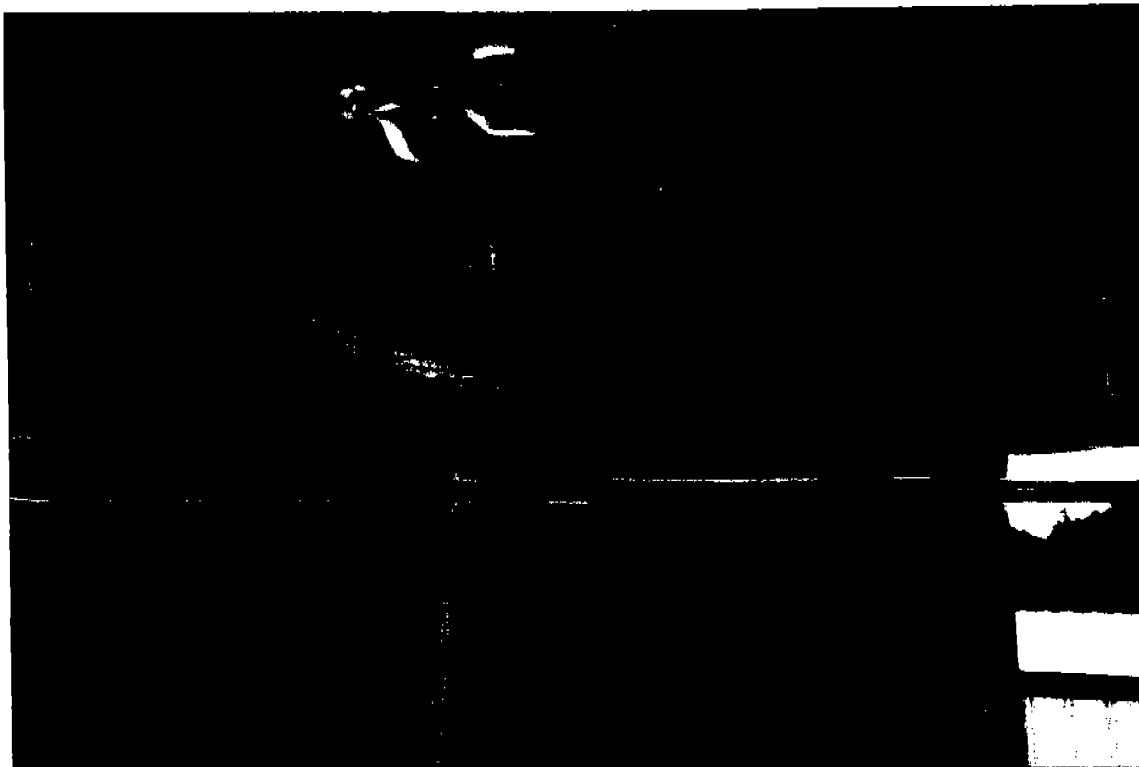




20. Raise yellow support braces on upper level. One front and rear. After raising braces, lower top by pulling out on hydraulic levers until roof sets on braces.



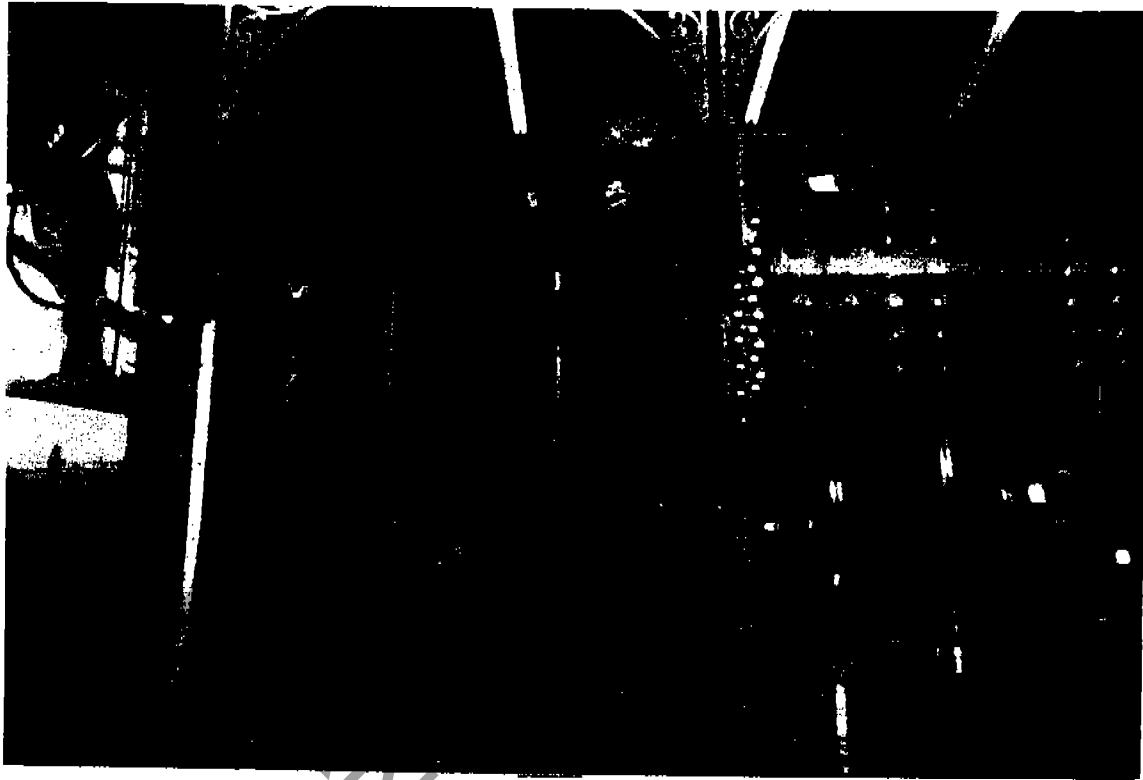
21. Unhook winch cable and tighten out of way.



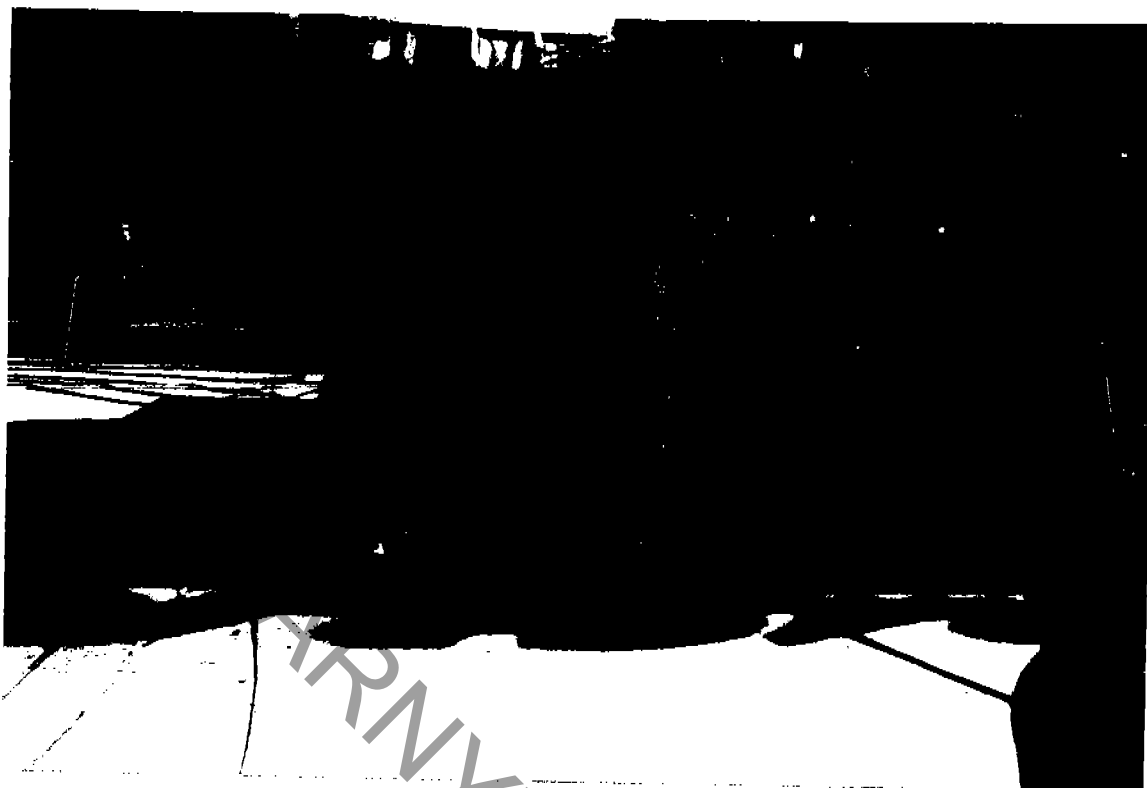
22. Insert roof panel and rear scenery panels.  
4 pins at top of panel



- 23, Mount Warning Sign and pin.



24. Raise top mirrors and pin (3 mirrors.



25. Place foam pad at exit to slide.

26. Fold up and pin all top fence.

WARNING: Do not wax slide.

Check all warning signs and lights.