

MFG: SARTORI  
NAME: SANTA FE  
Type: KIDDIE

SANTA FE SPECIFICATIONS

Loco - L 5'1" W 2' H 3'4" Wt. 150lbs.  
Carriage - L 5'4" W 2' H 22" Wt. 100lbs.  
Curved Track W 26" Wt. 60lbs.  
Straight " L 10' W 26" Wt. 60lbs. Rails W 1'8"

Control unit requires standard 110 VAC single phase outlet with 6 controllable speeds.

Track power ranges from 18VDC to 54VDC.

Equipped with seatbelts.

Entire train locked into track so train can not derail.

2 year warranty on motors (2 per locomotive).

Drive chain easily accessible for lubrication.

Impact resistant fiberglass construction with heavy sealed gel-cots finish protected against fading from ultra-violet rays.

Each car equipped with exterior lights.

Solid state "Space" sound with push button switches the child operates for additional "whistle" and "chugging" sounds.

Loco capacity 2 children

Carriage capacity 8 children.

Timer equipped (optional use) with automatic parking at predesignated location.

## SPACE TRAIN SPECIFICATIONS

Loco - L 6'6" W 2'10" H 1'7" Wt. 220lbs.

Carriage - L 6'7" W 2'10" H 2'5" Wt. 105lbs.

Curved Track W 26" Wt. 60lbs

Straight " L 10' W 26" Wt. 60lbs. Rails W 1'8"

Control unit requires standard 110 VAC single phase outlet with 6 controllable speeds.

Track power ranges from 18VDC to 54VDC.

Equipped with seatbelts.

Entire train locked into track so train can not derail.

2 year warranty on motors (2 per locomotive).

Drive chain easily accessible for lubrication.

Impact resistant fiberglass construction with heavy sealed gel-cots finish protected against fading from ultra-violet rays.

Each car equipped with exterior lights.

Solid state "Space" sound with push button switches the child operates for additional "whistle" and "chugging" sounds.

Loco capacity 2-3 children

Carriage capacity 8-12 children

Timer equipped (optional use) with automatic parking at predesignated location.

GREAT WESTERN SPECIFICATIONS

Loco - L 5'9" W 2'5" H 4'1" Wt. 220lbs.

Carriage - L 6'8" W 2'3" H 2'1" Wt. 105lbs.

Curved Track W 26" Wt. 60lbs.

Straight " L 10' W 26" Wt. 60lbs. Rails W 1'8"

Control unit requires standard 110 VAC single phase outlet with 6 controllable speeds.

Track power ranges from 18VDC to 54VDC.

Equipped with seatbelts.

Entire train locked into track so train can not derail.

2 year warranty on motors ( 2 per locomotive).

Drive chain easily accessible for lubrication.

Impact resistant fiberglass construction with heavy sealed gel-cots finish protected against fading from ultra-violet rays.

Each car equipped with exterior lights.

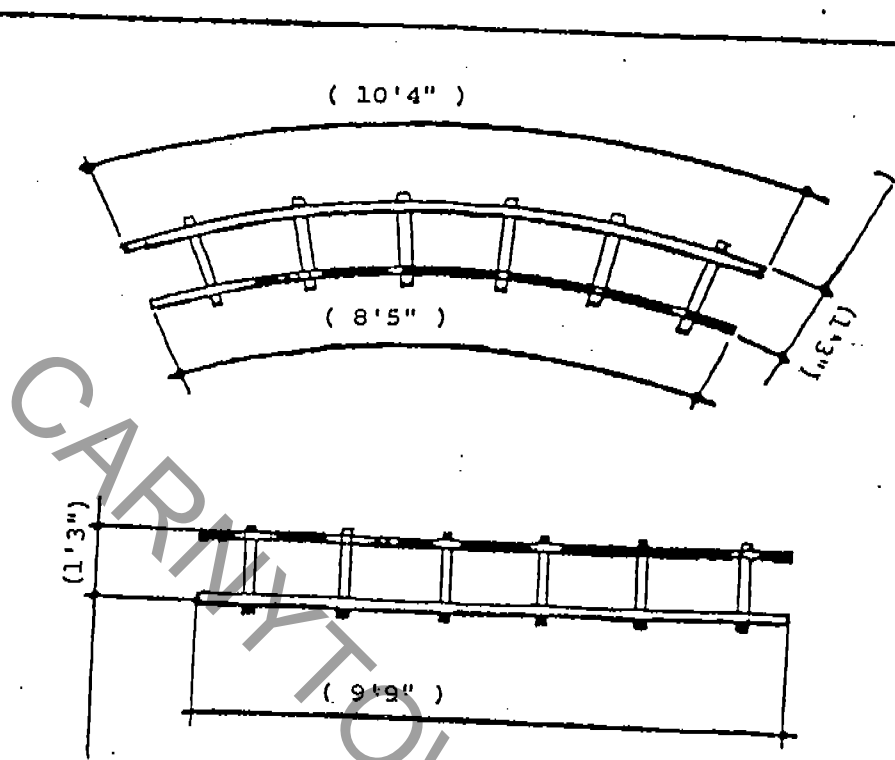
Solid state "Space" sound with push button switches the child operates for additional "whistle" and "chugging" sounds.

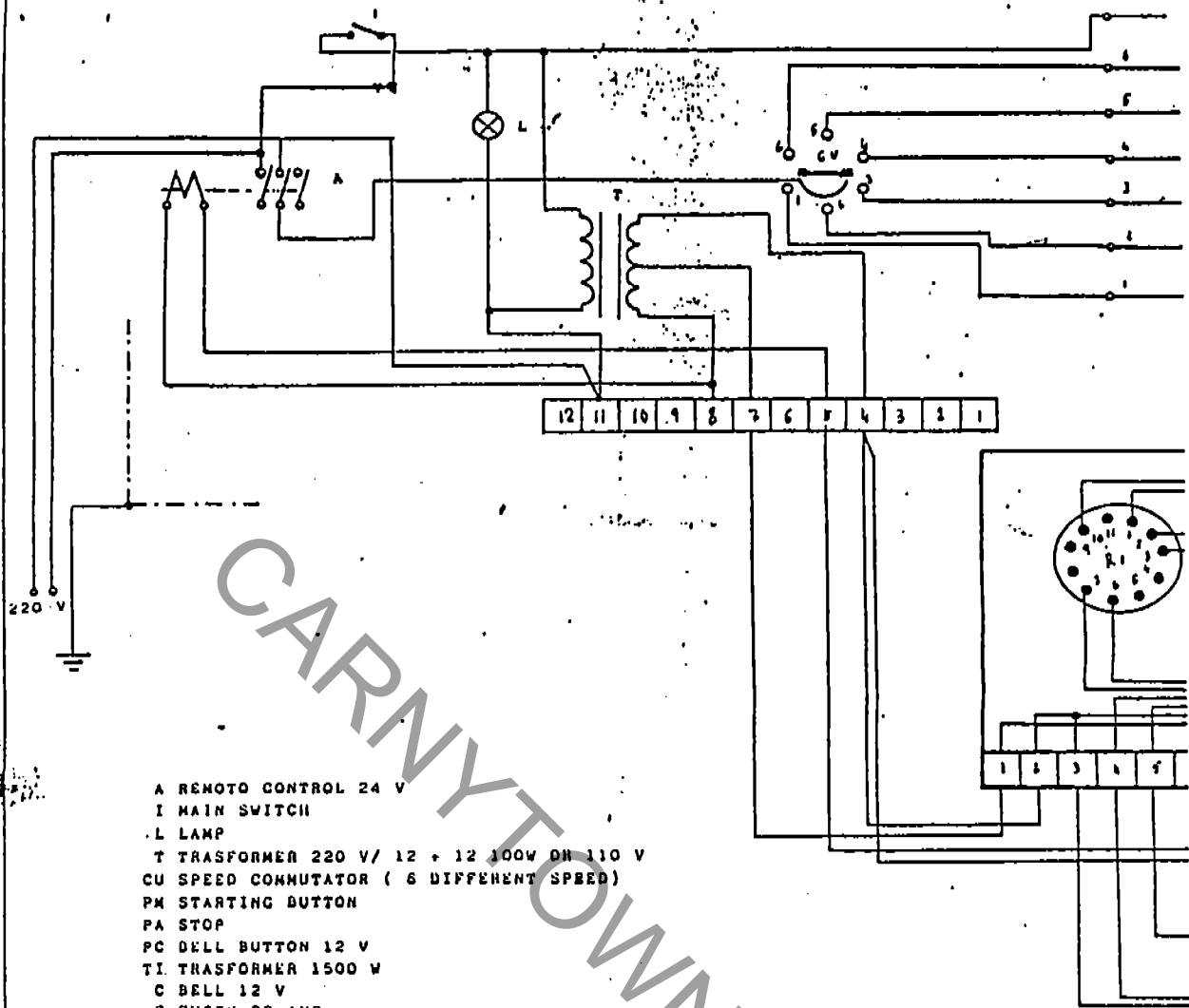
Loco capacity 2-3 children

Carriage capacity 8-12 children

Timer equipped (optional use) with automatic parking at predesignated location.

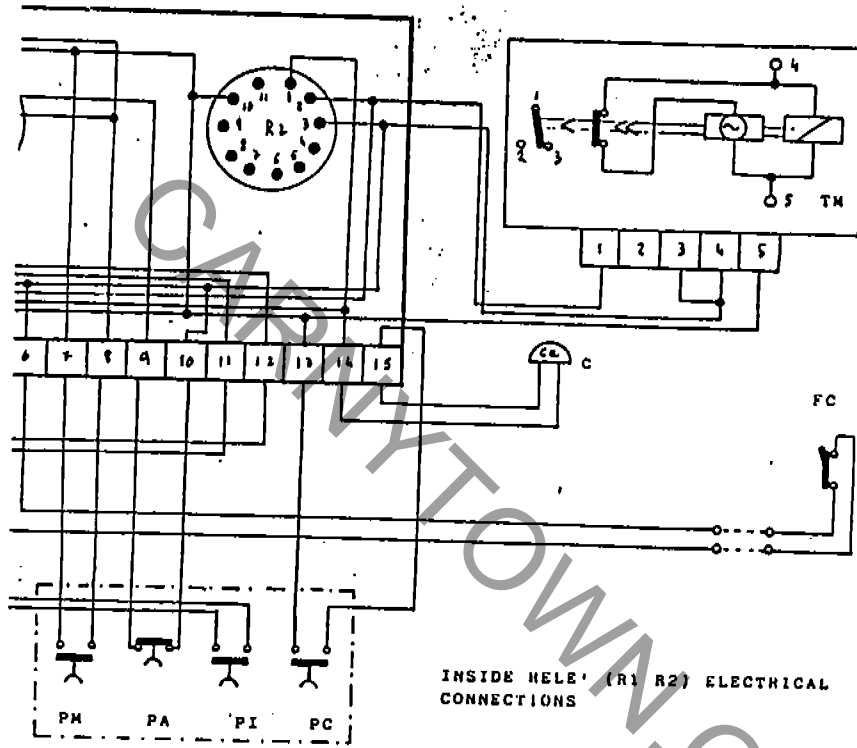
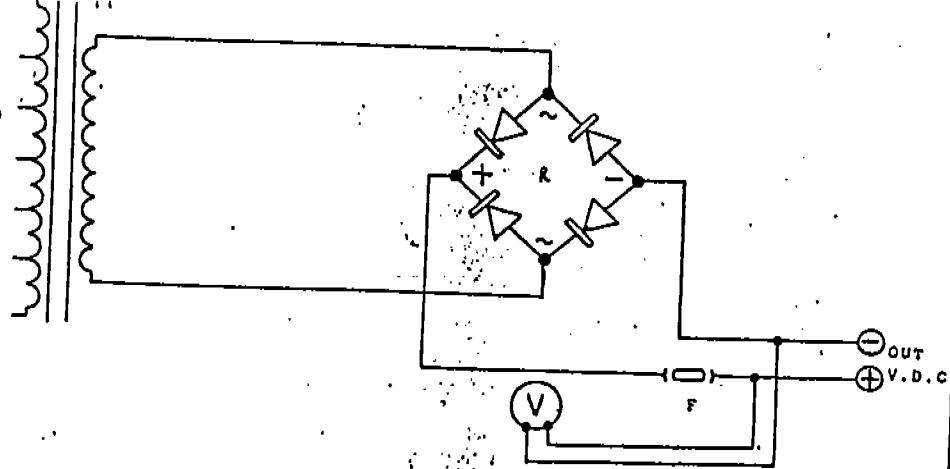
TRAIN TRACK SPECIFICATIONS





- A REMOTO CONTROL 24 V
- I MAIN SWITCH
- L LAMP
- T TRASFORMER 220 V/ 12 + 12 100W OR 110 V
- CU SPEED COMMUTATOR ( 6 DIFFERENT SPEED)
- PM STARTING BUTTION
- PA STOP
- PC BELL BUTTON 12 V
- TI TRASFORMER 1500 W
- C BELL 12 V
- F FUSES 32 AMP
- R HECTIFER
- V VOLMETER
- TM TIMER
- FC TRACK SWITCH

Also available in 110 v.



INSIDE HELE (R1 R2) ELECTRICAL CONNECTIONS

STARTING BUTTON

