

MFR: SARTORI
RIDE: GAS STATION

CARNYTOWN.COM

USE AND MAINTENANCE
MANUAL BOOK
GAS STATION
MOD. RS/327

THE MANUFACTURER RESERVES HIMSELF THE RIGHT TO MAKE ANY NECESSARY MODIFICATION OR CHANGES ESPECIALLY IN THE CONTROL BOX, IN THE ELECTRIC INSTALLATION AND IN THE STRUCTURAL SYSTEM OF THE COMPONENTS OF THE ATTRACTION.

SARTORI IMPORT EXPORT S.P.A.

IS THE ONLY AUTHORIZED COMPANY TO THE TRADING AND THE DISTRIBUTION ALL OVER THE WORLD OF THE PRODUCTS MANUFACTURED BY THE FOLLOWING FIRMS :

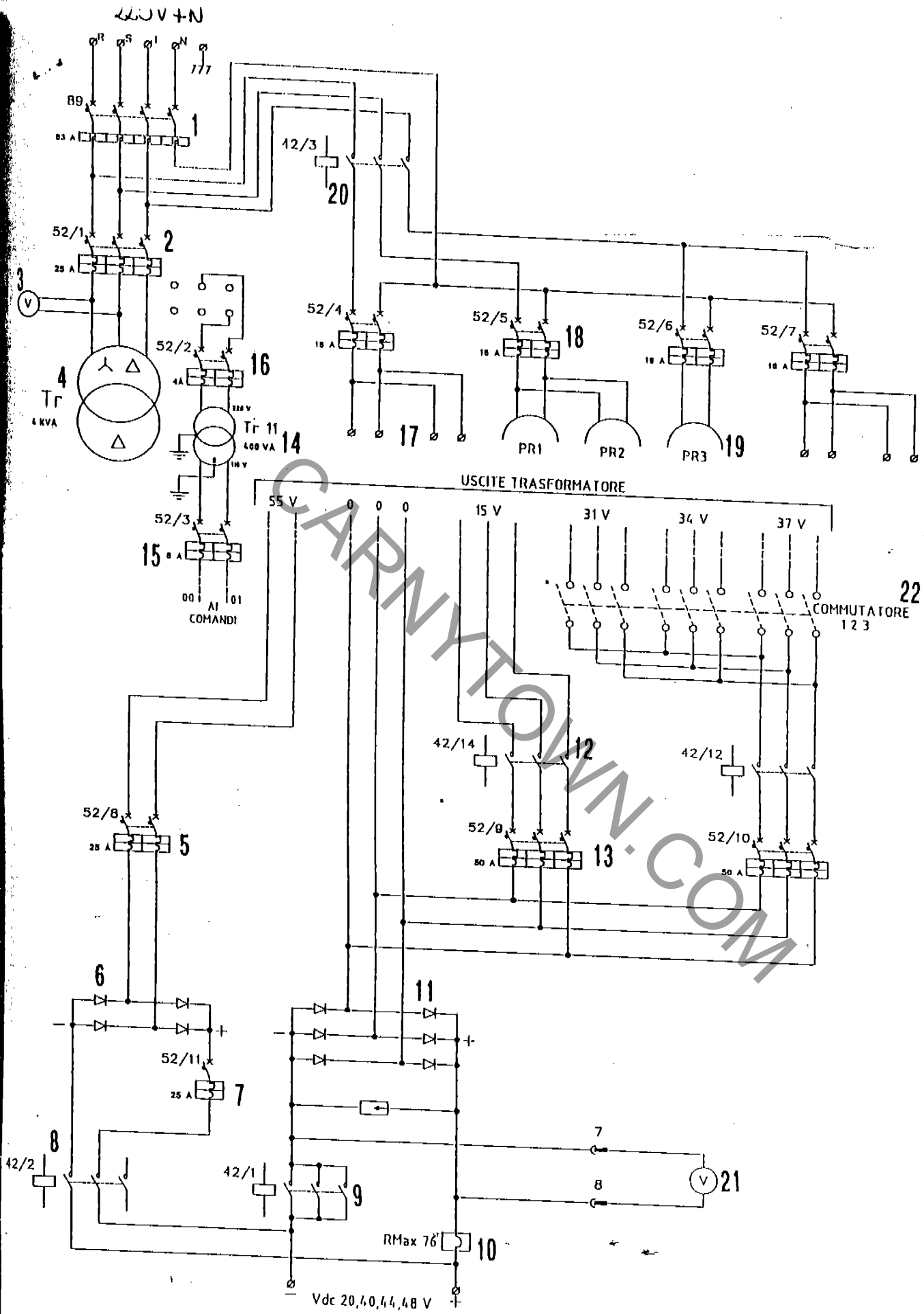
SAC SARTORI S.R.L
ZONA INDUSTRIALE
35044 MONTAGNANA (PD)
ITALY

SARTORI C. & C. S.N.C.
VIA DEL COMMERCIO
35044 MONTAGNANA (PD)
ITALY

1. Technical data

Moving power : KW 4 approx.
Power transf./rectifier : 220/110V 60Hz 3-phase
Frecuency : 60 Hz
Vehicles : 04 (with motor)
Seats capacity : 16 (Total capacity)
Track size : 43' 6" x 19' 5" x 10' 8" h.
13.30 x 5.95 x 3.30 h.
Weight : Lbs. 7935 / Kgs. 3600 aprox
Transmission : Electromechanical

CARNYTOWN.COM

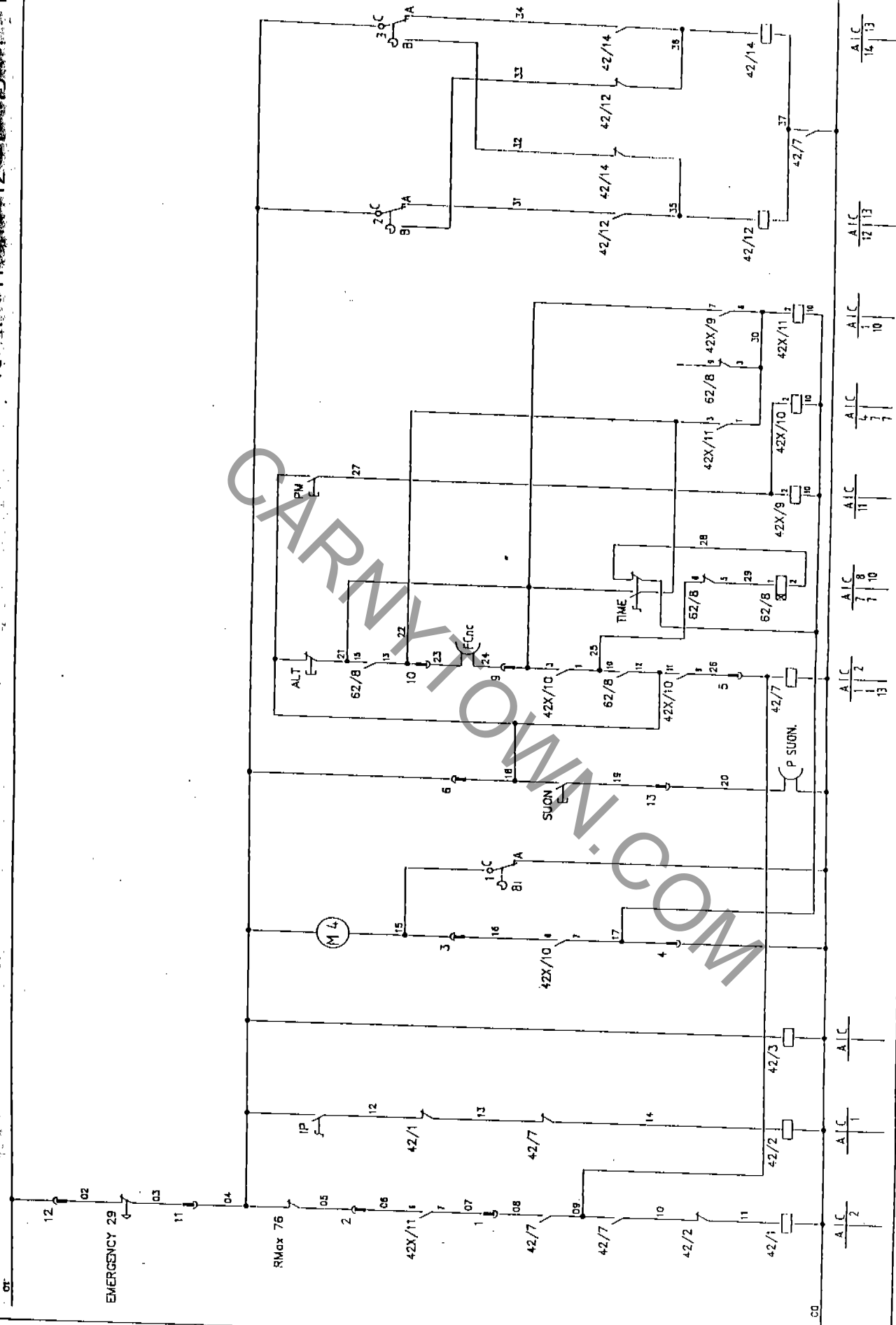


USCITE TRASFORMATORE

COMMUTATORE
1 2 3

Vdc 20,40,44,48 V

1 2 3 4 5 6 7 8 9 10 11 12

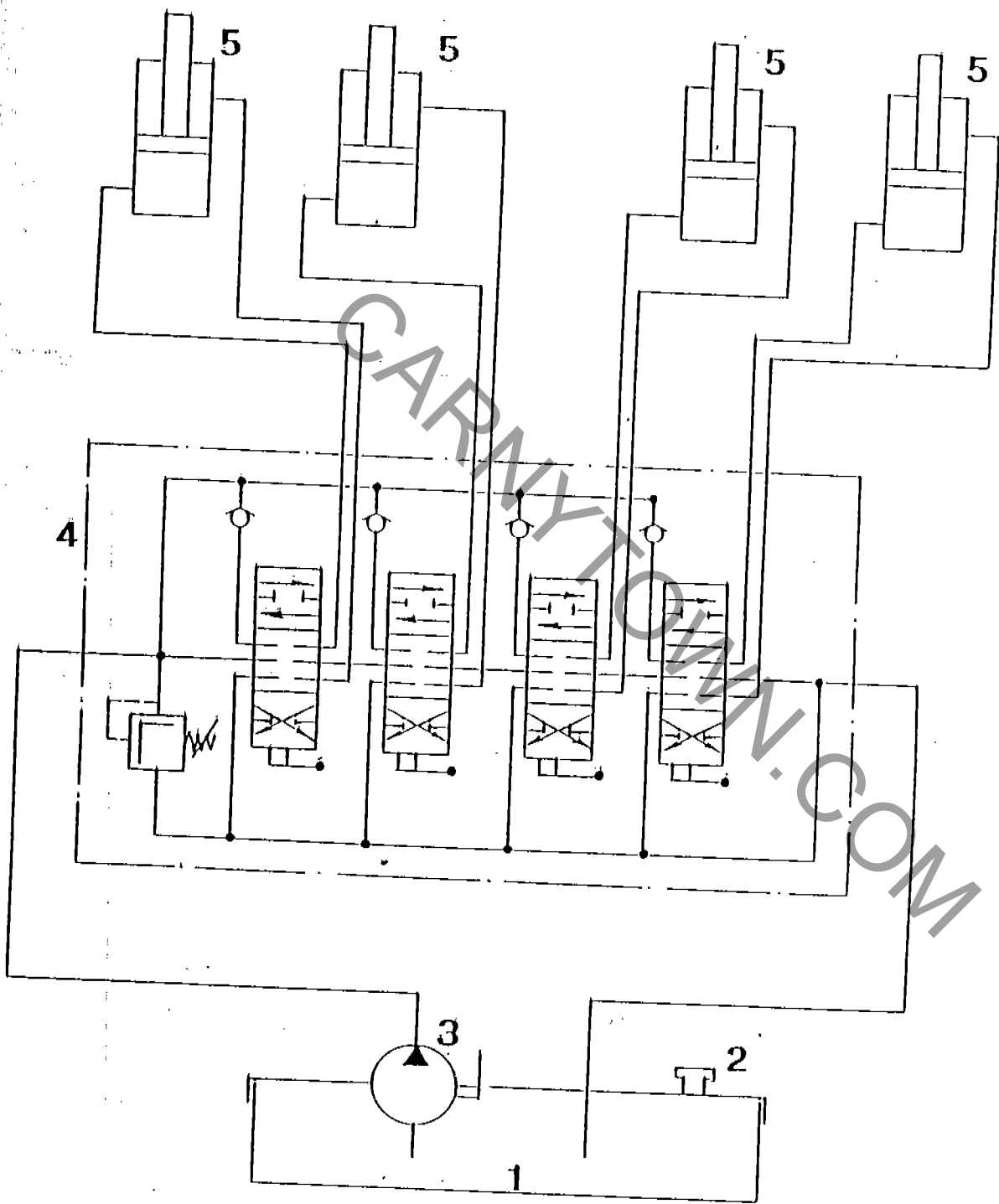


GRUPPO MINI RODEO TRIFASE SU CARRO

18/9/9

LIST ELECTRIC COMPONENTS

- 1 Differential switch Siemens 4 x 63A
- 2 Magnetothermal switch 3 x 25A
- 3 Voltmeter in-coming power
- 4 3-phase transformer 4KVA
- 5 Magnetothermal switch Siemens 2 x 25A
- 6 Rectifier lights vehicles while in station
- 7 Magnetothermal switch Siemens 16A
- 8 Braker CGE CL04
- 9 Braker CGE CL07
- 10 Relais power maximum absorption
- 11 3-phase rectifier for vehicles motor
- 12 Braker CGE CL06 speed vehicles
- 13 Magnetothermal switch Siemens 3 x 50A
- 14 Transformer tension controls 400VA 220/110V
- 15 Magnetothermal switch 1 x 6A
- 16 Magnetothermal switch 1 x 4A
- 17 Terminals-box for lights 220V
- 18 Magnetothermal switches 2 x 16A
- 19 Power plugs
- 20 Braker CGE CL04
- 21 Voltmeter track
- 22 Commutator for vehicles speed



7. List of hydraulic installation components

- 1) Tank 30 liters
- 2) exhaust cap
- 3) motorpump 12Vcc 1500W 1750 rpm type D113 NA NVQD+GR1 1.7cc S
- 4) distributor SD5/4 P(KG3) 18Lx4 with levers
- 5) piston \varnothing 80/70 mm 850 mm. With pole \varnothing 50 and ball-point

CARNYTOWN.COM

8. Ordinary maintenance

Hereafter are mentioned maintenance schedule to keep the ride in a proper and good running conditions.

8.1 Daily maintenance







- check the perfect leveling and the connection of the track sections
- check if all blocking pins have their safety pins at the end. Fix it where missing.
- check all electric connections and plugs.

8.2 Weekly maintenance

- grease the rail with graphite grease
- check the good running of the motors of the vehicles. Considering it is not possible to check the motors while the convoy is running, to check them one by one, put wooden blocks underneath the turning axles to have the wheels free while pushing the START and see if all the moving wheels are turning.
- check the wear of the nylon rollers on the guide-units (if needed replace them)
- check the wear of the contact brushes on the guide-units (if needed replace them)
- check the wear of the tires of the vehicles (if needed replace them)
- grease the transmission chain
- check the pressure of the tire of the trailer (max. 5.5 Bar)

NOTE :

Please use only greases suggested hereafter :

	●	Aralub HL 2		●	Chevron Dura-Lith Grease 2
	▲	Aralub LFZ 1		▲	Chevron Pinlon Grease MS
	●	BP Energrease LS 2		●	BEACON 2
	▲	BP Energol WRL		▲	SURETT Fluid 4 K
	●	Castrol Spheral AP 2		●	GULF CROWN Grease No. 2
	▲	Castrol Gilbda 33 S		▲	GULF LUBCOTE No. 2

Greases
Graisses
Grassi
Grasas

8.3 *Monthly maintenance*

- check the pressure of the tires of the vehicles (max. 2.5 Bar)
- check the tension of the transmission chains of the vehicles. Oscillation in the lower part of the chain must be 10 mm. Approx. If it is needed to adjust the transmission chain, when found the motor in the vehicle, unlock the nut from the regulator screws, then loose the four fixing screws of the motor unscrewing or screwing the regulator screws until an perfect tension is reached. Block the regulator screws with the nut then the four motor fixing screws. Take attention to have always the axle of the motor in perpendicular to the axle of work of the transmission chain. **Avoid to have the chain of the motors too loose or too tensioned.**
- check to have always a sufficient quantity of oil in the tank of the trailer lifting installation system. Check it using the indicator of the cap. If missing add it. Change totally the oil in the tank once a year.

8.4 *Extraordinary maintenance*

After first few hours operation of the ride, check all the nuts, screws and pins existing in the ride.

NOTE :

All maintenance operations must be done and carried out only by qualified personnel and with **no electrical power in the ride.** (excluded the checking operations of the motors)

9. Operation

Lift the moving power general switch, the differential single-phase switch and the line switches in the general electric box..

Push "BELL" button to inform riders that the ride is starting, push "START" button to start the ride.

To stop the attraction push "STOP" button.

NOTE : For any irregularity of the attraction or strange behaviour of some riders, push "EMERGENCY" red button, the attraction will stop immediately and the operator will have to verify how to go on ensuring the highest safety to the riders.

To reset the ride, turn the EMERGENCY red button in clockwise direction and all functions will restart immediately.

The control board is supplied with a timer to stop automatically the convoy when on.

To limit the ride time it is necessary to fix the clock-ring in a pre-fixed determined time.

Furthermore the control board is supplied with : bell button, voltmeter to check speed changes.

The general box is supplied with : switch to turn off lights of vehicles in parking position, veltmeter to check power tension.

To stop completely the ride, push the stop button, turn down all line-switches, push the differential F.M. and single-phase and close safely the box using the keys supplied with the control board and the general electric box.

10. What to do if

10.1 *The attraction does not respond to the start controls*

If pushing the start button the convoy of vehicles do not move, if in teh voltmeer the changes of tension are not regulars or if in the general box there is a noise, check the fuses of control and of power in the general board. If they are damaged, replace them. Check the electric connections in the control board.

10.2 *Lights do not work*

In this case check the fuses inside the general electric box and also check all the lights. If burned up replace the damaged ones.

10.3 *When the vehicles are in parking position one vehicle push the other ones*

This inconvenient may happen because of one broken diode of blocking of the vehicles. If needed replace it. **Make sure to replace it with no power in the ride.**

IN CASE YOU DO NOT SOLVE A PROBLEM USING THIS MANUAL BOOK PLEASE CONTACT OUR COMPANY, OUR TECHNICIANS WILL BE AT YOUR COMPLETE DISPOSAL.

11. Safety rules

11.1 Set up / Dismantling

To be made by qualified personnel only.

Make sure that nobody stand closed to the set up / dismantling area

11.2 Electric installation

The connections to the main power and to the ground mass must be done by authorized and qualified personnel only.

Everyday check that no tampering have been made.

11.3 Mechanical part

All specified rules must be strictly observed.

11.4 Operation

Before opening the ride to the public, the operator will have to let the ride turn empty for a few minutes and check if all push-buttons "STOP", "START", "EMERGENCY", work properly.

- All operator must be responsible, capable and careful to guarantee the maximum safety to passengers.
- The ride has been designed and manufactured for children from 4 up to 10 years old.
- All riders must fasten seat-belts
- Do not let handicapped persons ride
- Make sure to buckle seat-belts on empty seats in order to avoid to have them touching the fixed ride structure while convoy is turning
- Before pushing the start, make sure to advise riders that ride is starting by pushing the bell button
- Push immediately EMERGENCY push button if any riders try to get out or get in the ride while convoy is turning.

It is suggested to have always safety fences all around the ride when it is set up in order to avoid people get into the operating area of the ride.

Besides the above rules, the operator must also observe all safety rules in force in the Country where the ride will operate.