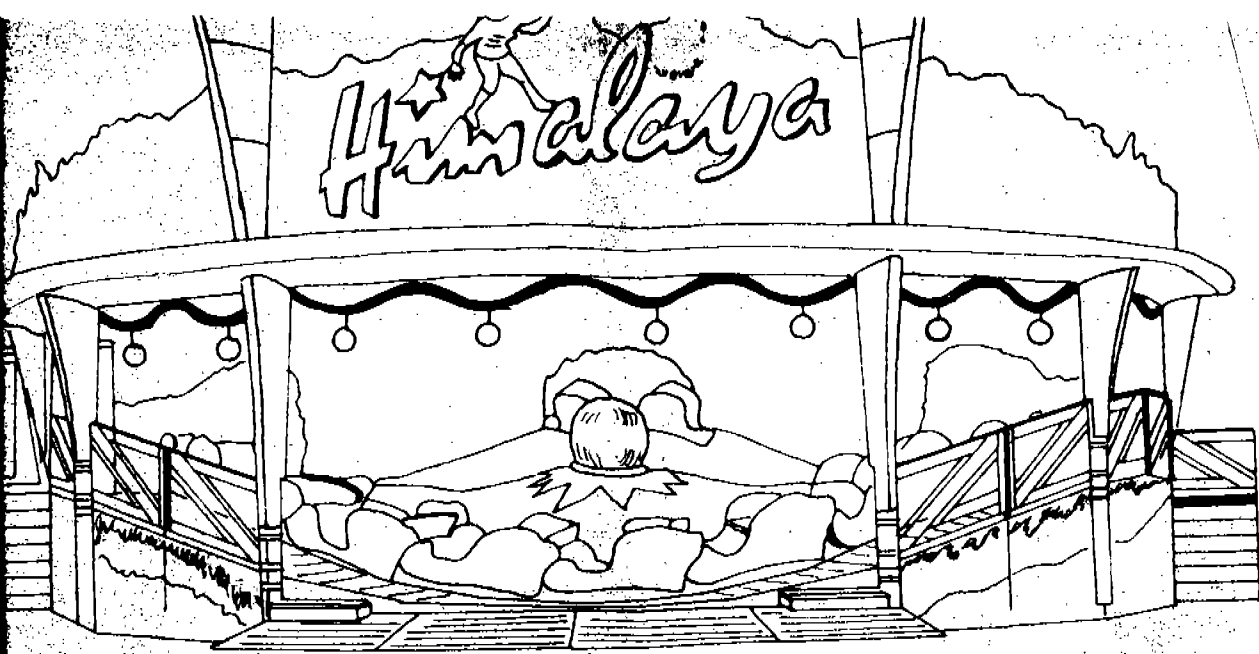


MFB: REVERCHON
RIDE: OVERLAND EXPRESS/
HIMALAYA

CARTRAKERTOWN.COM



constructeurs
77 Sannois/Seine
France
tél: 424-61-66



HIMALAYA

DESCRIPTION — MAINTENANCE
and
SPARE PARTS



GASTON REVERCHON
e. fils.
77920 SAMOIS-SEINE
FRANCE

HIMALAYA

Specifications

Floor space	P	3+4
Hydraulik specifications	P	5
Hydraulik circuit	P	6
Hydraulik diagram	P	7
Warning	P	8
Electric specifications	P	9
Electric description	P	10
Operating rules	P	11
Failure voltage	P	12
Electric diagram N° 40.6272.23	P	13
Electric fonctions N° 40.6271.23	P	14
Position switches wiring 40.6274.23	P	15
Control box wiring 40.6273.23	P	16
Maintenance	P	17
Spare parts	P	18-32

GROUND STRUCTURE

For clamping bolts see next page

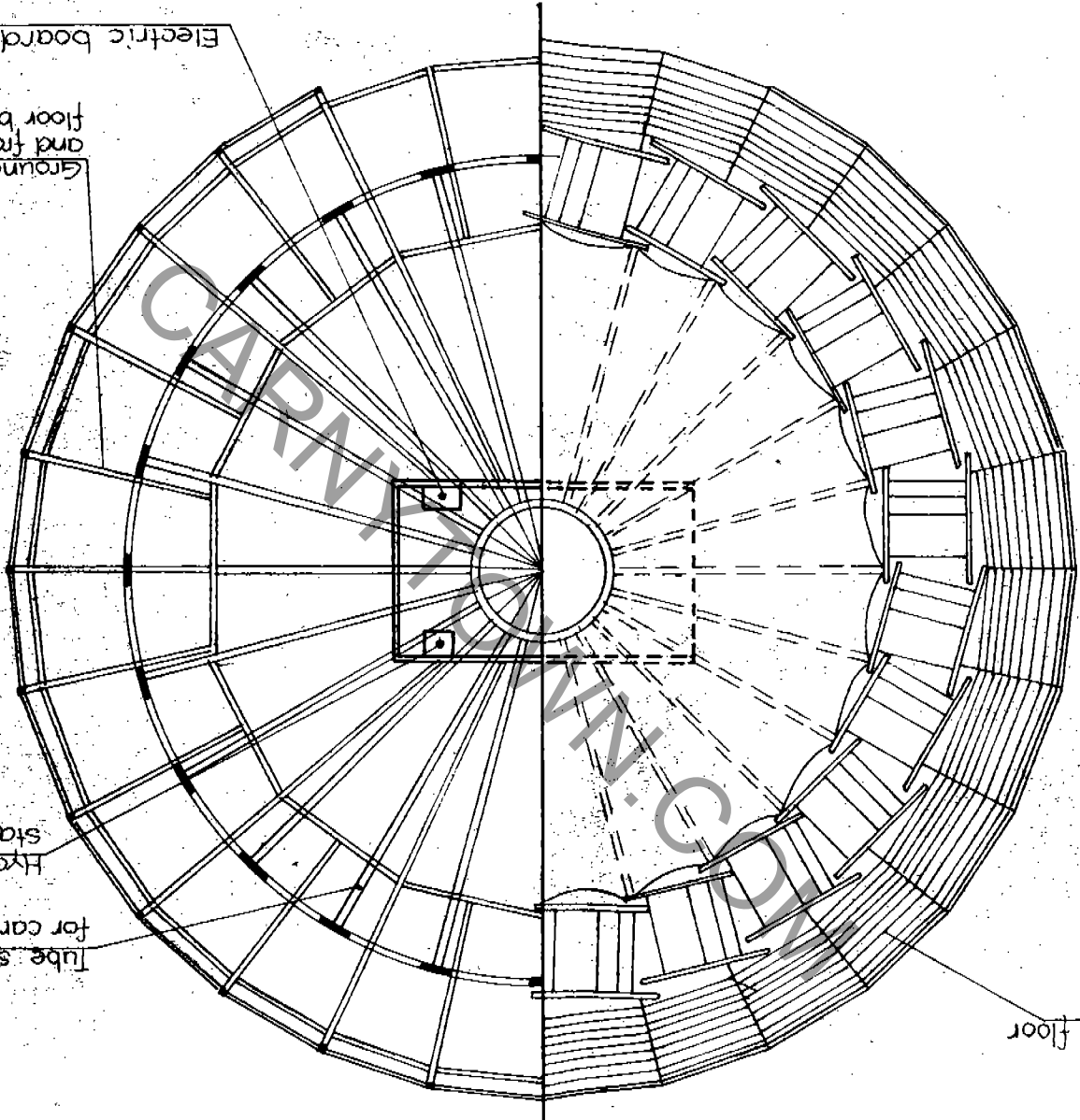
Ground layers and framing to floor bearers

Electric board

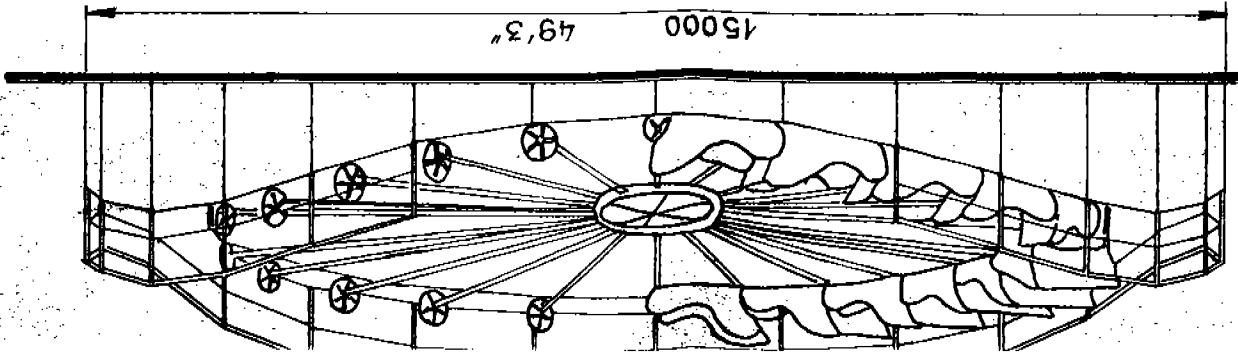
Tube supports for cars

Hydraulic station

ounding floor



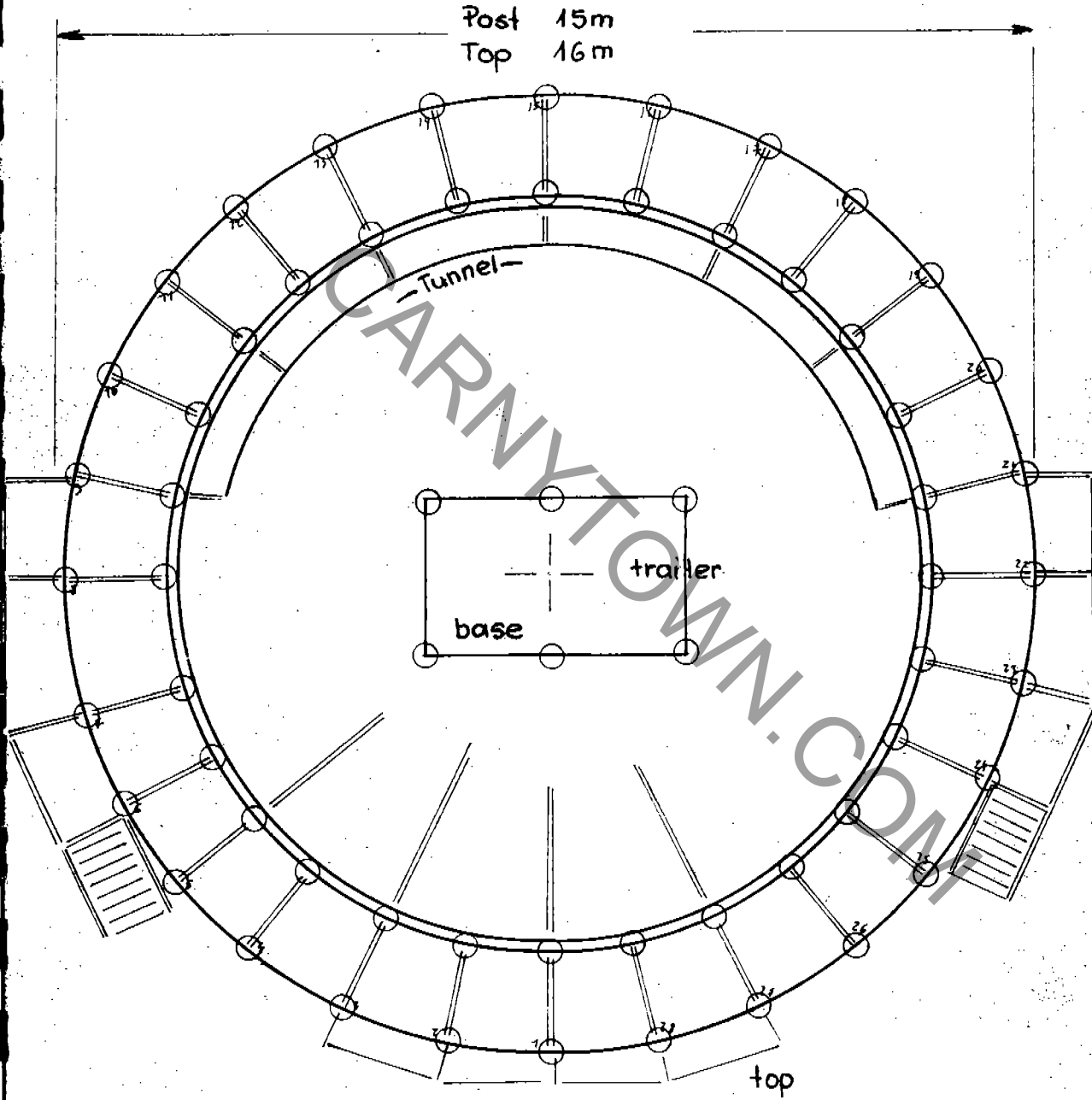
FRONT VIEW



HIMALAYA

Floor-space

Post 15m
Top 16m



○ - Clamping points

Hydraulic specifications

Oil : use "Hydrelf 37"

or one oil having 3,5 ↔ 4,5° Engler

rates at 50°C, change it 1st. 500h and after each 3000h
(122°F)

Filter: clean it once a month

Oil level: watch it always, on the oil tank side indicator

Keep it at the indicated valve.

Flexible pipe: must be maintained clean when removed

CARWYTTOWN.COM

Hydraulic specifications

Oil : use "Hydrelf ⁴⁴ ~~33~~"

or one oil having 3,5 ↔ 4,5° Engler

rates at 50°C, change it 1st. 500h and after each 3000h
(122°F)

Filter: clean it once a month

Oil level: watch it always, on the oil tank side indicator

Keep it at the indicated valve.

Flexible pipe: must be maintained clean when removed

Hydraulic circuit

In three parts .

1.) A power circuit or main circuit including:

Main pump
4 hydraulic wheel engine
2 pressure limit valves (high valve)

2.) An auxiliary circuit including.

Auxiliary pump
2 claps
1 pressure limit valve (low valve)

3.) A deduction circuit including.

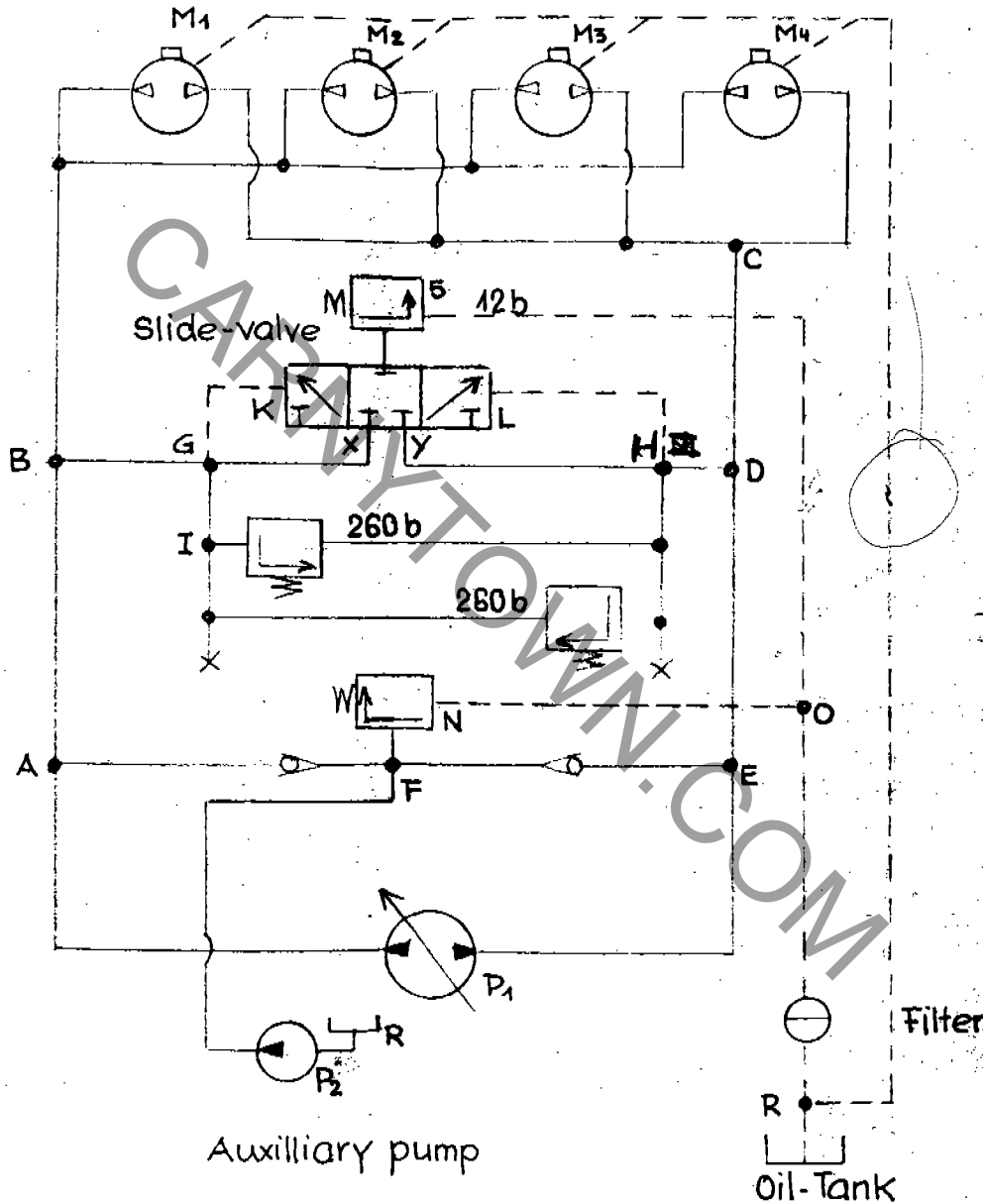
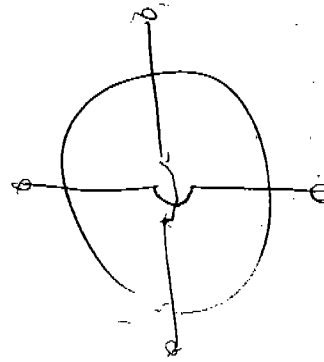
- a slide valve (self working)

- the power circuit makes the high pressure required
- the auxiliary circuit is used to maintain a necessary low level pressure for the best pump and engine working condition
- A deduction circuit required to remove automatically the working oil.

See the hydraulic circuit diagram on next page.

HYDRAULIC DIAGRAM

Hydraulic wheel engine



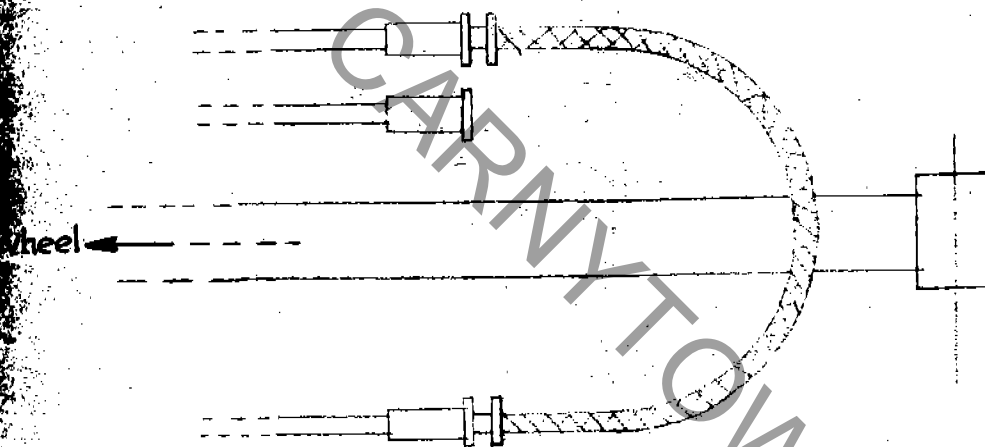
1) Main circuit : $P_1, A, B, M, M_2, M_3, M_4, C, D, E, P_1$

2) Auxilliary circuit: R, P_2, F, E, P_1

3) Deduction circuit: FNOR and (BGX LHD or DHYKGB)

Engine break down

- isolate the failing wheel hydraulic engine from others
- shut its hydraulic circuit on itself, joining input and output with a hose



- To make the manual rotation easier putting the cars on, use the same mean on each engine circuit.

WARNING!

- ① When the ride works with 3 engines instead of the 4 required, watch the speed. Don't let it to reach its top value. Use the slow accelerator position.
- ② Never try to work without the auxilliary pump on (green light on.)

Electric instructions

Description

The electric installation consists of:

- an electric board
- a remote control board
- a hydraulic station

The electric board contains mainly:

- an isolating switch
- a differential circuit breaker assuming peoples protection (300 mA)
- a change over switch
- the others apparatus for the electric engines automatic command; relays, contactors, ect.

The remote control board wears all the usefull parts for signalisations and command.

The hydraulic station has

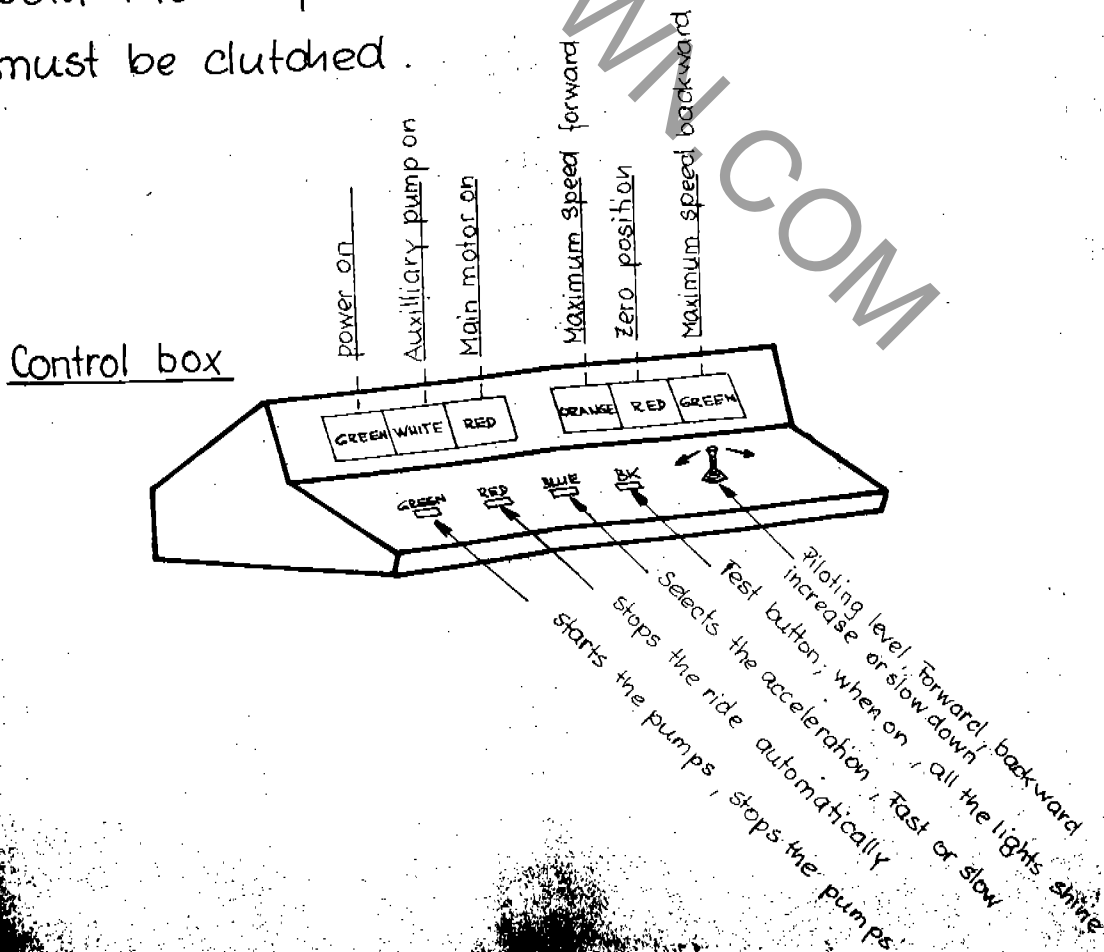
- one main pump electric motor (30 HP)
- one auxilliary pump motor (2 HP)
- one Servo-motor for regulation

The HIMALAYA must be supplied with 220V 3phases, without neutral conductor.

HIMALAYA

Electric instructions

- voltage : 208 Volts 3 phases without neutral conductor
- cycles : 60 Hz
- Power : 24 Kw (without lights)
- The ground conductor must be connected to the ground and the ground resistance must be less than 80Ω
- The three phases distribution is right only if the red lamp visible on the electric board shines.
if necessary, reverse two phases.
- The 3 green lamps indicate the voltage between each two phases
- both thermic protections RA1 FA 116 and LR1 D 09312 must be clutched.



Maintenance of the slewing ring.

The slewing ring does not need any maintenance, others than a periodic lubrication (once a month) with a good bearing grease (Mobilux Grease N° 2) - there are 6 lubricators, give them 10 shuts.

Hydraulic rotating joint

lubricate once a month with a Poclair grease EP or Texaco Molytex grease 2.
(3 lubricators) fill them up.

Wheels

should be relubricated when they are mounted (bearing grease)

Beams

relubricate the pins used to mount the beams once a month for a settled ride or every mounting

Electric engine

relubricate once a year

OPERATING RULES - all buttons are off-

- 1) push the black button, see if all the lights are on, then release it. (If required, remove the broken lamp)
(green light shines)
- 2) Start the pumps, pushing the green button.
the auxilliary pump start (White light on) after temporisation,
the main motor starts (Red lamp on)
- 3) if the red button is off the ride will move when the piloting level will be moved.
- 4) When the orange light is on, it means that the speed will not increase any more.
- 5) moving the piloting level backward, the ride will slow down
passe the zero position, then move backward till the maximum speed will be reached (green light on)
- 6) At any moment, pushing the red button down, will slow the ride and stop it. Then release the red button.
(the red lamp on the right side indicate the zero position which means the ride is stopped.)
- 7) When the piloting level is released on the middle position the ride keeps its speed.
If the piloting level is released when the ride is stopped the ride will remain stopped, till the piloting level will be moved again.
- 8) The pumps can stay running
- 9) The blue button can stay on the fast acceleration.
the slow one is provided in case of engine failure.
(see hydraulic specifications)

Failure voltage

will stop the motors, when the voltage will come back, the ride will be able to work again only after the full stop (red light on) meanwhile the commandes have no effects the the both motors are working again.

No MISTAKES ARE POSSIBLE with the commandes
the electric system provides that.