



MAN-CO MFG., INC.

2725 19th Street S.E. • P.O. Box 13114 • Salem, Oregon 97309 U.S.A.
Office (503) 362-2341 • FAX (503) 362-2536

MFG: MANCO PRODUCTS, INC.
NAME: SUPER SLIDE
TYPE: ATTRACTION

DAILY INSPECTION CHECKLIST

SUPER SLIDE

1. Check blocking, outriggers and landing gears
2. Check leveling
3. Inspect steps and handrails
4. Check snap keys on a.) steps; b.) starting gates, and c.) light poles
5. Inspect turnbuckles and support arms
6. Check electrical connections & plugs
7. Inspect canopy
8. Inspect safety carpet
9. Inspect fence and fence jacks
10. Inspect condition of sliding surfact (note: do NOT wax)
11. Check bolts on main frame hand rail
12. Inspect sliding bags

CARNYTOWN.COM



MAN-CO MFG., INC.

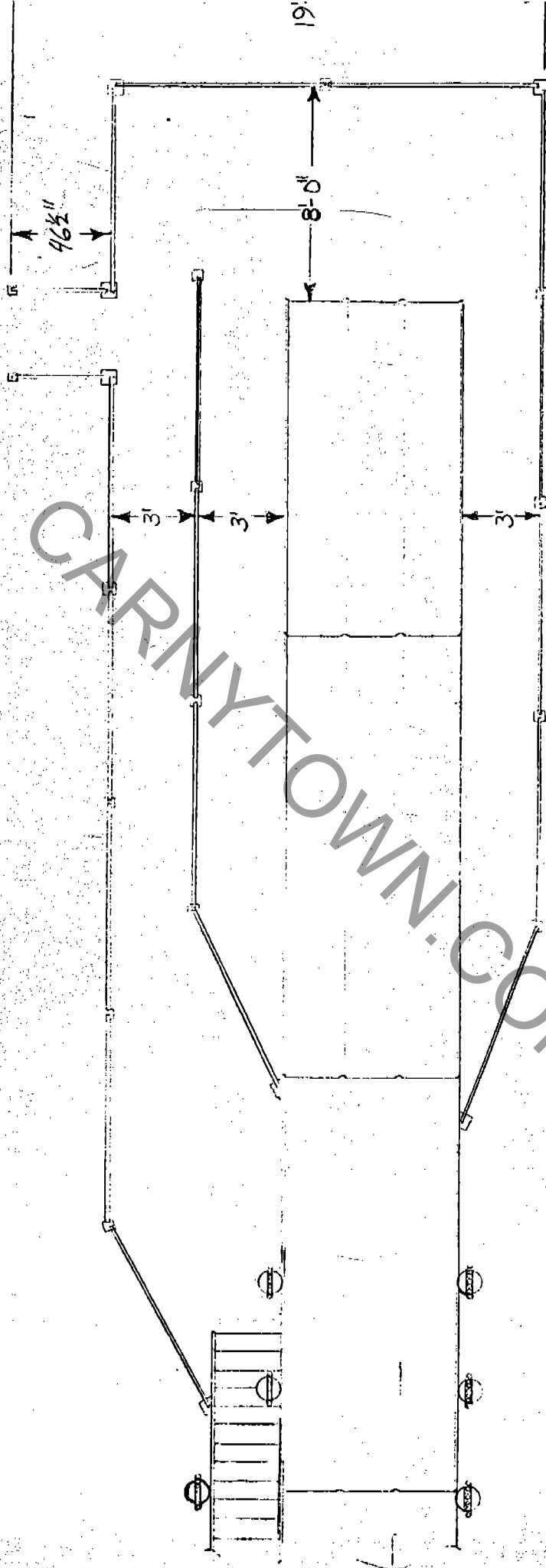
2725 19th Street S.E. • P.O. Box 13114 • Salem, OR 97309 U.S.A. • (503) 362-2341

BULLETIN: BU-137 MC
DATE: JANUARY 1, 1989
ATTENTION: ALL SUPER SLIDE OWNERS

It has been observed, that when people are exiting from the end of the slide, they have a tendency to cross the active lanes.

In order to rectify this situation, we feel that the attached bulletin fence layout is necessary to direct the riders to exit in a safe manner. This configuration will require (3) three additional long fence sections and (4) four additional fence base feet.

We feel that it is in the best safety and interest of your customers. that this preventive measure is adhered to.



MAN-CO. MFG. INC.

SUPER SLIDE FENCE LAYOUT

1/1/00

PH 127

SUPER SLIDE

OPERATION & MAINTENANCE MANUAL

MAN-CO MFG., INC.

P.O. Box 13114
Salem, OR 97309 U.S.A.
(503) 362-2341

TABLE OF CONTENTS

INTRODUCTION AND WARRANTY	1
TABLE OF CONTENTS	II
GENERAL DESCRIPTION OF THE SLIDE	1
SPECIFICATIONS	2
POWER SUPPLY REQUIREMENTS	2
SPACE & FOUNDATION DIAGRAM FOR PORTABLE SLIDE	3
DESCRIPTION OF THE AREA NEEDED TO SET UP THE SLIDE	3
ASSEMBLY INSTRUCTIONS	4-16
PLATFORM CABLE DIAGRAM	7
SIGN CABLE & CANOPY ASSEMBLY	12
SIGN CABLE DIAGRAM	13
OPERATION INSTRUCTIONS	16
FENCE LAYOUT DIAGRAM	17
SLIDE RELOADING AND ASSEMBLE PART STORAGE	18-19
GENERAL MAINTENANCE	20
MAINTENANCE CHECK LIST	20
TROUBLESHOOTING GUIDE-ELECTRICAL SYSTEM	21
TROUBLESHOOTING GUIDE-HYDRAULIC SYSTEM	22
INFORMATION REQUIRED FOR SERVICE PARTS ORDERS	23
PARTS LIST	24-33

INTRODUCTION

This manual is intended to be used as a general guide for the operation and maintenance of your ride. Man-Co Manufacturing, Inc. is constantly striving to improve performance, efficiency and safety; therefore, certain improvements may not be reflected in the text of the manual. Any major revisions or additions to the manual will be sent to you free of charge. Specially engineered features purchased for individual rides may not be incorporated in the manual.

MANUFACTURER'S LIMITED WARRANTY

Man-Co Manufacturing, Inc. warrants that purchased property is free from all defects in material and workmanship at the date of delivery and for 90 days thereafter. Man-Co Manufacturing, Inc. does not warrant that purchased property will meet or exceed federal, state and local design criteria or electrical codes. Man-Co Manufacturing, Inc.'s liability is hereby limited to the repair or replacement of any equipment, accessory or part which is defective due to material failure or workmanship. The cost of returning defective parts to Man-Co Manufacturing, Inc. and the cost of transportation of repaired or replaced parts to Purchaser shall be born by Purchaser. Man-Co Manufacturing, Inc. shall not be liable for down-time or loss of operating revenue or any other commercial consequential damages. Losses resulting from improper maintenance or failure to observe Man-Co Manufacturing, Inc.'s operating instructions are expressly excluded from this warranty. Purchaser hereby acknowledges receipt of current operating, maintenance and erection instructions, a copy of which is attached to this agreement and made a part hereof.

It is expressly understood between Man-Co Manufacturing, Inc. and Purchaser that all warranty is void and Man-Co Manufacturing, Inc. disclaims any and all liability or responsibility for failure, loss or damage if device is assembled, maintained or operated other than as recommended in the Manual provided with each device or is loaded or operated in excess of the operator's operating criteria set out in the appropriate manual.

THIS WARRANTY, AND THE OBLIGATIONS AND LIABILITIES OF MAN-CO MANUFACTURING, INC. HEREUNDER ARE IN LIEU OF ALL OTHER WARRANTIES, GUARANTEES, CONDITIONS OR LIABILITIES, EXPRESS OR IMPLIED, INCLUDING WARRANTIES OR MERCHANTABILITY AND FITNESS FOR A PARTICULAR PURPOSE AND SHALL NOT BE EXTENDED, ALTERED OR VARIED EXCEPT BY WRITTEN INSTRUMENT SIGNED BY MAN-CO MANUFACTURING, INC. AND PURCHASER.

GENERAL DESCRIPTION OF THE SLIDE

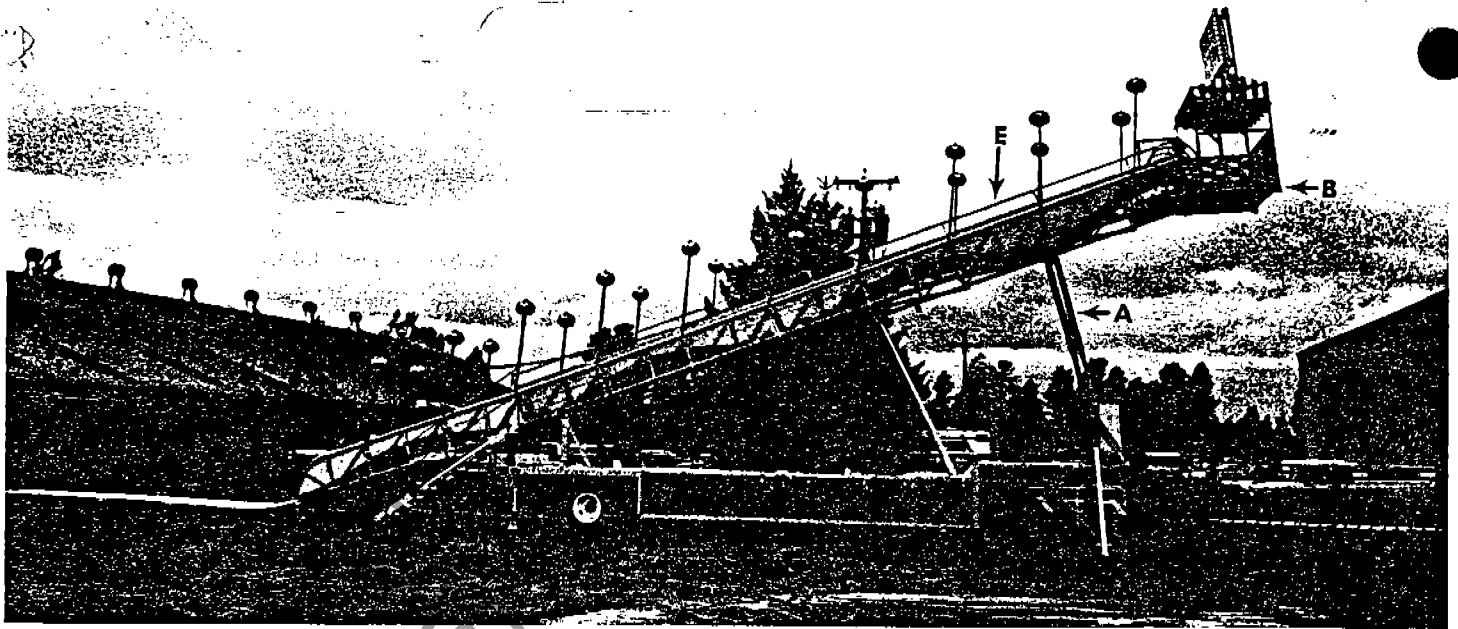


Fig. 1

- | | | |
|-----------------------------|---------------------|----------------------|
| a. standing support bracket | c. support carriage | e. handrail |
| b. upper platform | d. tail sections | f. lower slide steps |

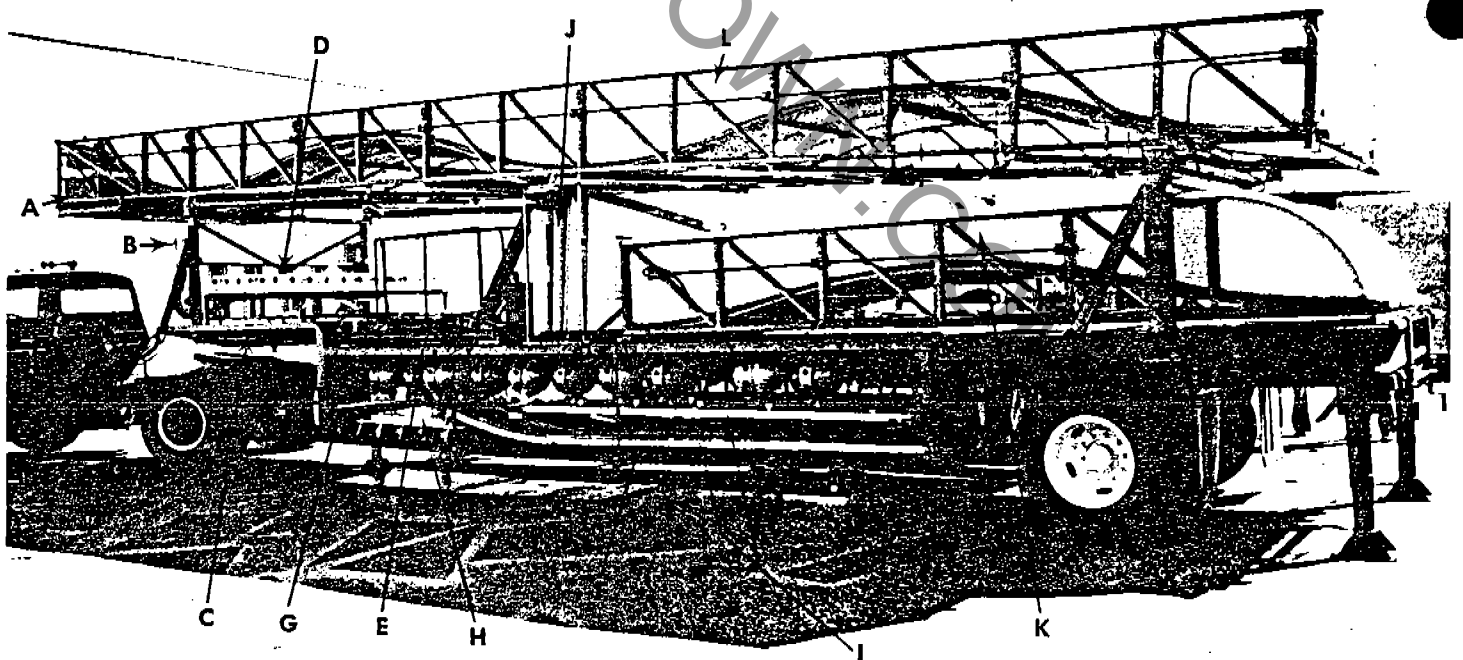


Fig. 2

- | | |
|---|--|
| a. upper storage box | f. lower storage deck |
| b. outside fence sections | g. ticket booth sign, seat, money box (optional) |
| c. gooseneck deck | h. ticket booth roof (optional) |
| d. electric sign | i. tail sections |
| e. top storage deck (Refer to Fig. 41 for further storage information.) | j. ticket booth side sections (optional) |
| | k. lower slide section |
| | l. upper slide section |

- e. Remove the snap keys that secure the door hinges and remove the trailer storage area doors. Slide the doors under the trailer for later use.
- f. Connect the main power cable to the power source.
- g. Check the hydraulic pump for the correct rotation. (Indicated by the arrow on the pump.) (Fig. 8)

CAUTION: Just jog the motor switch when checking the hydraulic pump rotation. *Do not* run for any length of time. Damage to the pump could occur if the pump is running in the wrong rotation.

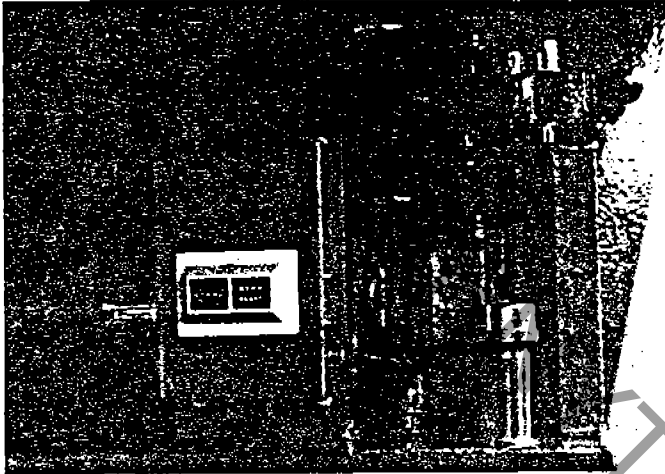


Fig. 8

- h. Remove the turnbuckles that support the trailer storage area and slide them under the trailer for later use.
- 2. ASSEMBLE LOWER SLIDE STEPS INTO STEPLADDER**

NOTE: The lower slide steps can be assembled into a stepladder and used while setting up the ride. The assembly parts are stored on the side frame of the steps. (Fig. 9)

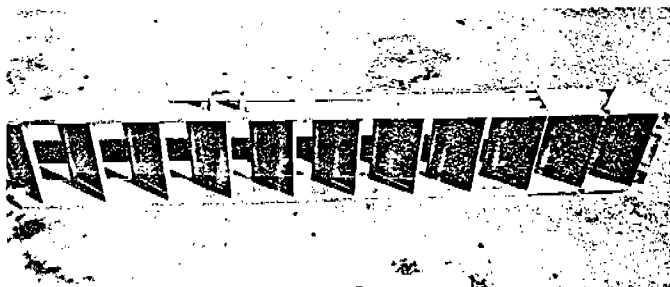


Fig. 9

- a. Remove the snap keys and bolts in order to remove the 2 legs, 2 support bars and 2 braces from the steps frame.
- b. Slide the 2 leg stands out from the steps frame.
- c. Insert the legs in the sockets at the top of the steps. Insert the legs in the leg stands.
- d. Stand the ladder upright.
- e. Secure one end of a support bar to the ear on the leg and the other end to the inside of the

steps frame. (above the 4th from the bottom step.) *Pin and key in place.* Repeat other side.

- f. Secure 2 braces between the 2 legs to form an "X". Pin and snap key the braces to legs. Pin and key the braces together at the crook point of the "X". (Fig. 10)

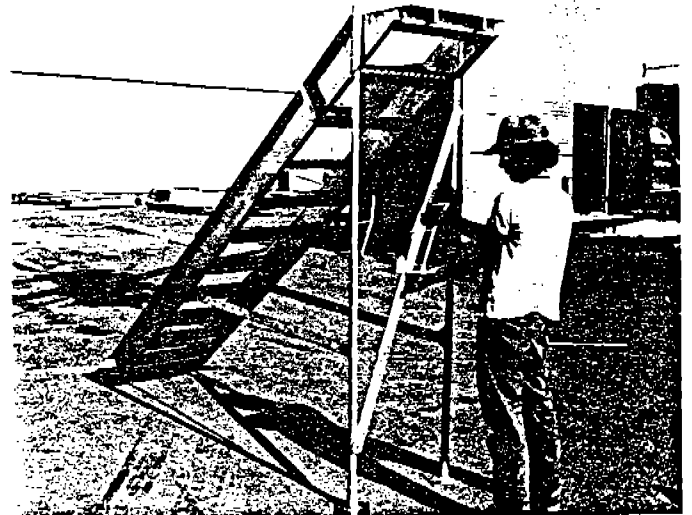


Fig. 10

3. UNLOAD ELECTRIC SIGN

- a. Unload electric sign from the gooseneck deck and set it aside for later assembly.
- b. Remove the rear cross bracket, on which the sign was stored, from the sockets on the gooseneck deck. Set it aside with the sign.

4. SCREW JACKSTANDS, JACKSTAND BRACES, OUTRIGGERS, TURNBUCKLES

- a. Remove the pins that secure the left and right screw jackstands against the sides of the trailer frame. (Fig. 11) Allow the jackstands to hang down from the trailer frame. (Fig. 12)

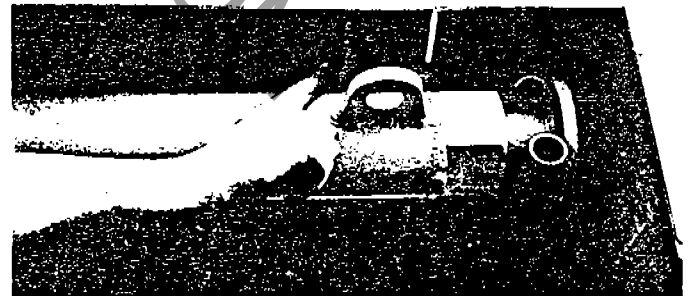
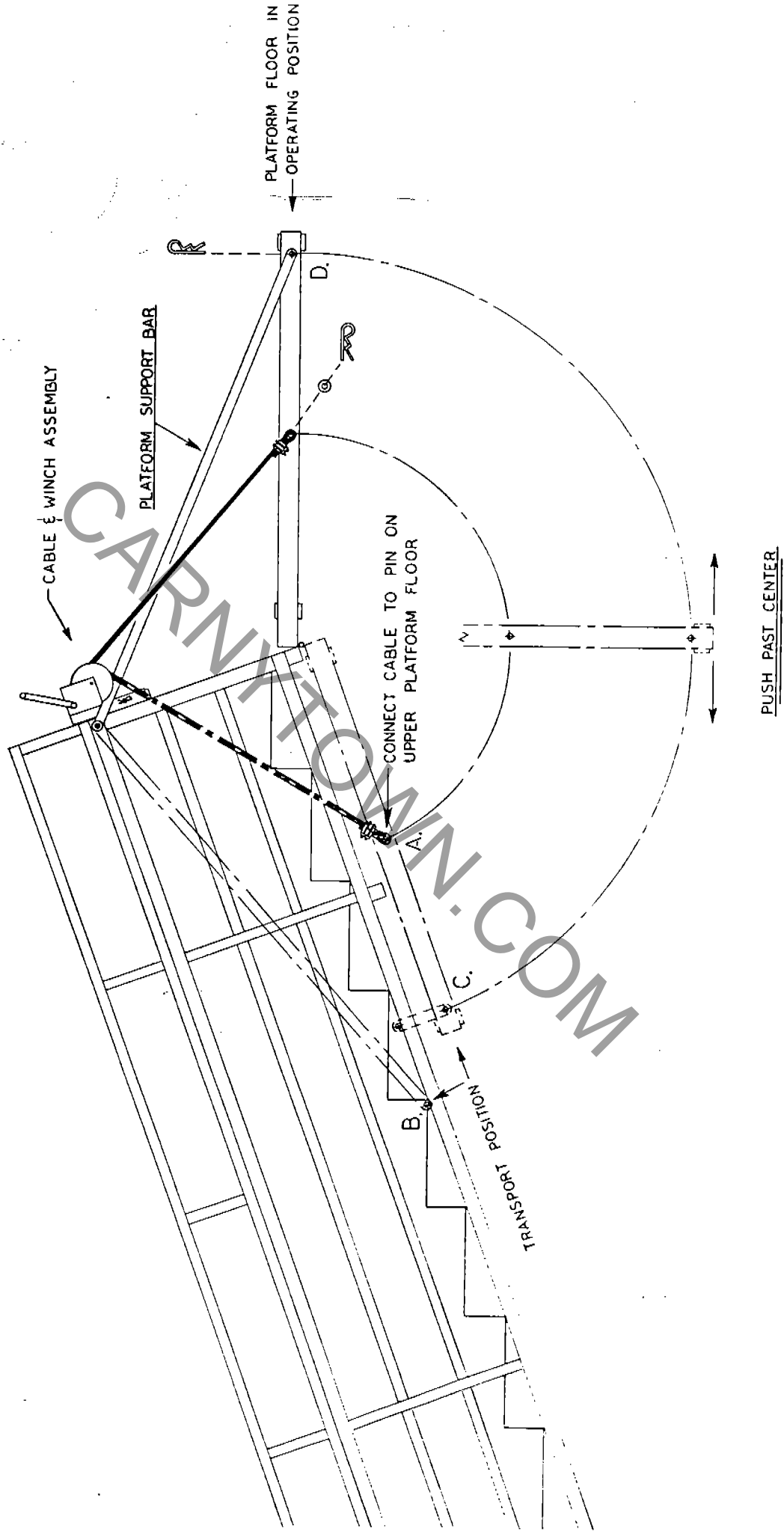


Fig. 11



Fig. 12

PLATFORM CABLE DIAGRAM



b. Arch Support Frames

(1) The arch support frames are stored on the left side of the top storage deck. Refer to Fig. 45 (1).

(2) Install the arch support frames by sliding the leg sockets over the canopy corner support posts on each end. (Fig. 20a) Repeat the other side.

c. Canopy Support Frame Bars

(1) The canopy support frame bars are stored on the left side of the top storage deck. Refer to Fig. 45 (2).

(2) Slide the frame bars into the arch support frame sockets. (Fig. 20b)

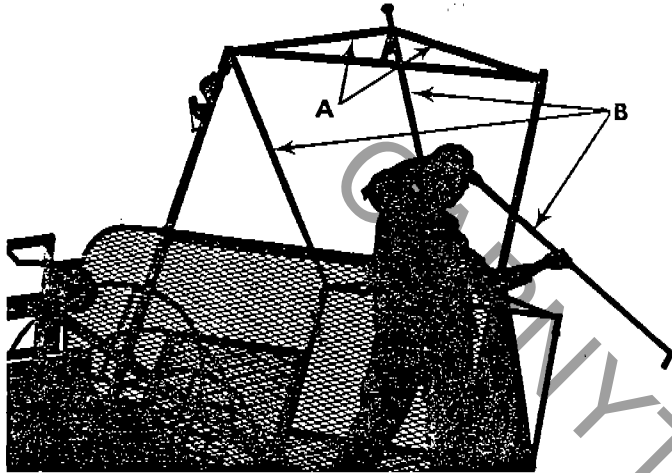


Fig. 20

d. The cloth canopy is stored in the slide bag box. Drape the canopy over the canopy frame.

10. STARTING GATES

a. The starting gates are stored in the upper storage box.

b. Working from the upper platform, install the starting gates in the sockets located under the step and the starting deck. (Fig. 21)

CAUTION: Each starting gate must be secured in place with 2 snap keys.

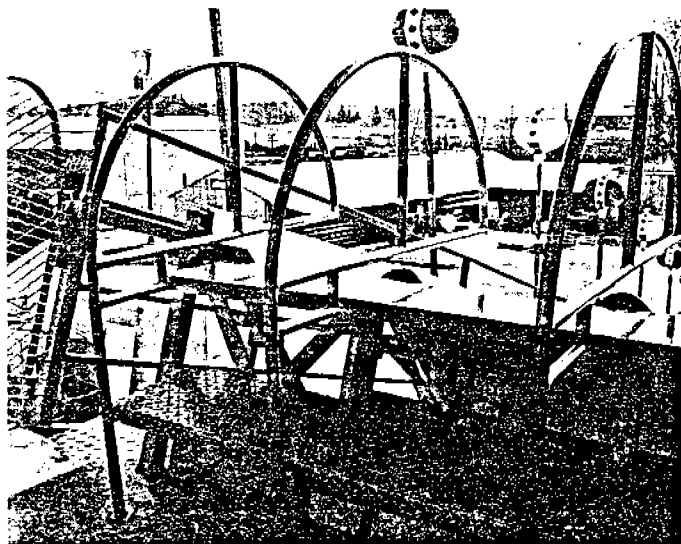


Fig. 21

11. SLIDE BAG BOX

Remove the slide bag box from the top storage deck and place it near the step entry.

12. ELECTRIC SIGN SUPPORT FRAME

a. Side Support Brackets

(1) The 2 side support brackets are stored on the right side of the top storage deck. Refer to Fig. 44 (1).

(2) Working from the platform, bolt the side support brackets to the top rails of the left and right side fence sections.

(3) *Note:* The side support bracket with the pulley must be installed on the winch side. (Fig. 22)

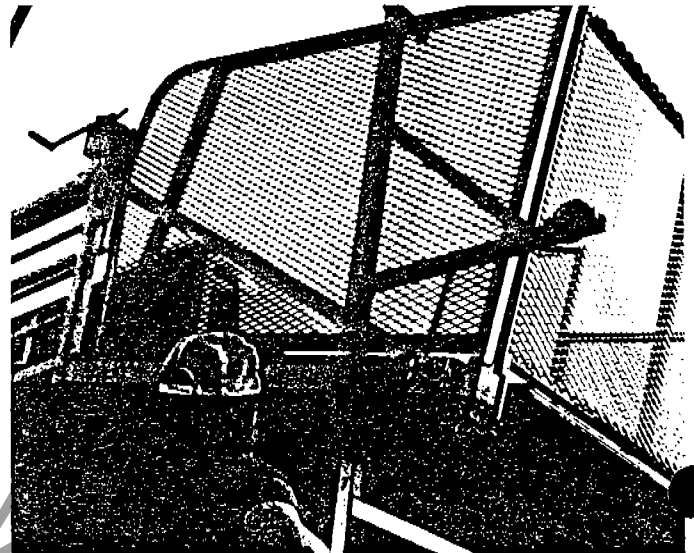


Fig. 22

b. Cross Support Bars

(1) The 2 cross support bars are stored on the right side of the top storage deck. Refer to Fig. 44 (2).

(2) Working from the stepladder, secure the upper cross support bar to the ears located on the side support brackets. *Pin in place.* (Fig. 23a)

(3) Secure the lower cross support bar to the lower sockets located on the side support brackets. *Use snap keys.* (Fig. 23b)

Note: The lower cross support bar has 2 pins welded to it.

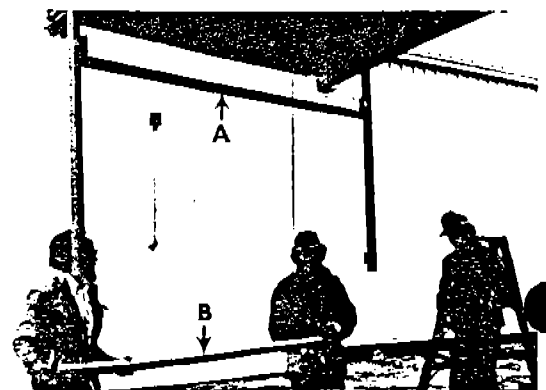


Fig. 23

16. LOWER SLIDE SECTION

- a. Unlock the 2 lock hooks on the rear of the trailer. (Fig. 28)

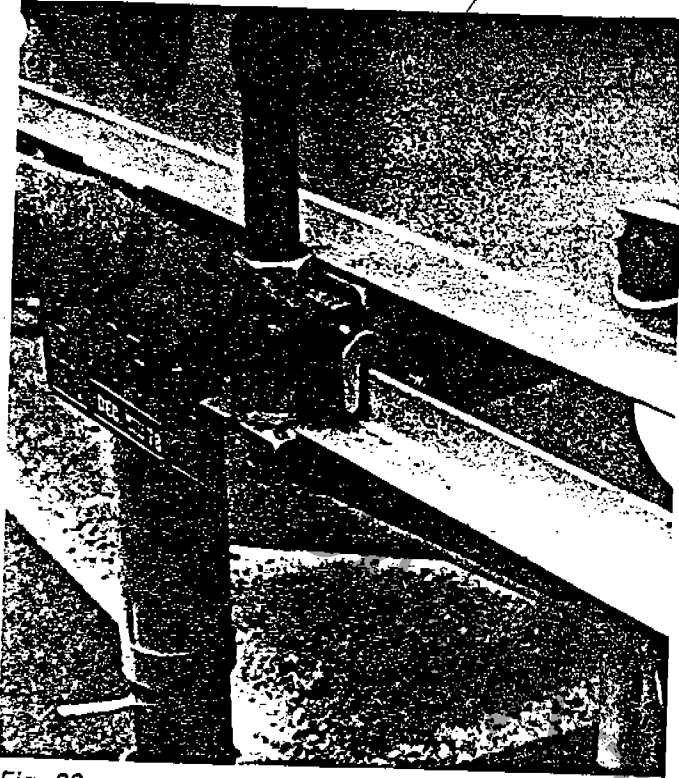


Fig. 28

- b. Pull the support carriage for the lower slide frame partially out. (Fig. 29a)
- c. Unsnap the crank screw handles and screw them partially down so that the tops of the screws are just below the trailer deck level.
- d. Remove the bolts that secure the lower slide frame to the trailer. (Fig. 29b)

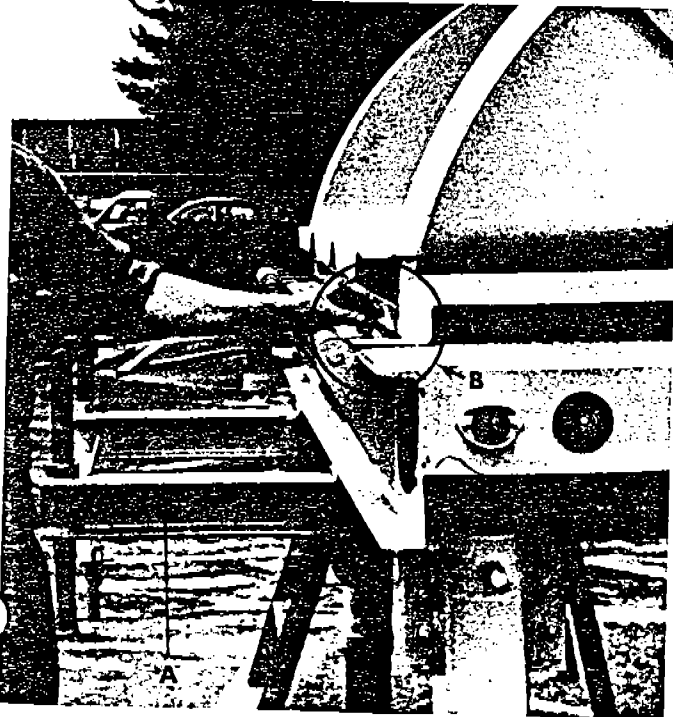


Fig. 29

- e. Pull the end of the lower slide frame onto the rollers on the rear of the trailer. (Fig. 30)

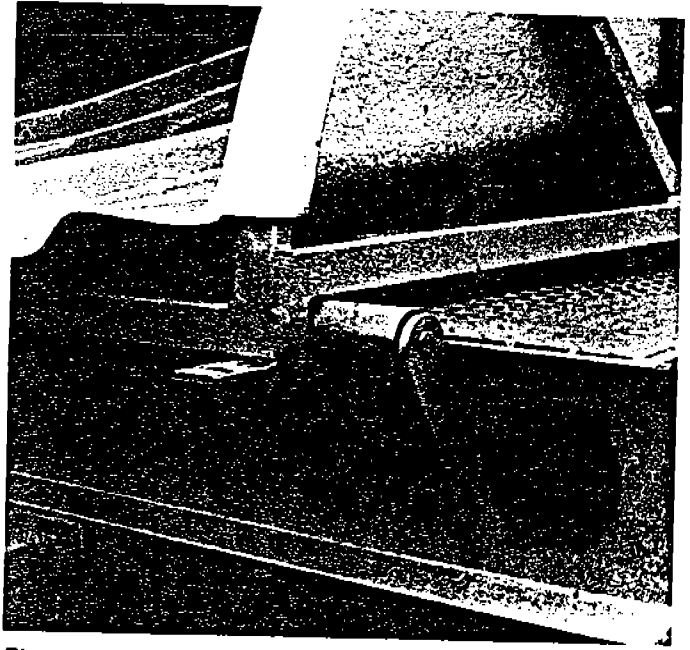


Fig. 30

- f. Use the rollers to help pull the lower slide frame partially out from the rear of the trailer frame.

Note: A metal channel strip is located under the lower slide section. It runs across the width of the lower slide frame. The groove in the strip must fit over the tops of the crank screws when the screws are raised. (Fig. 31)

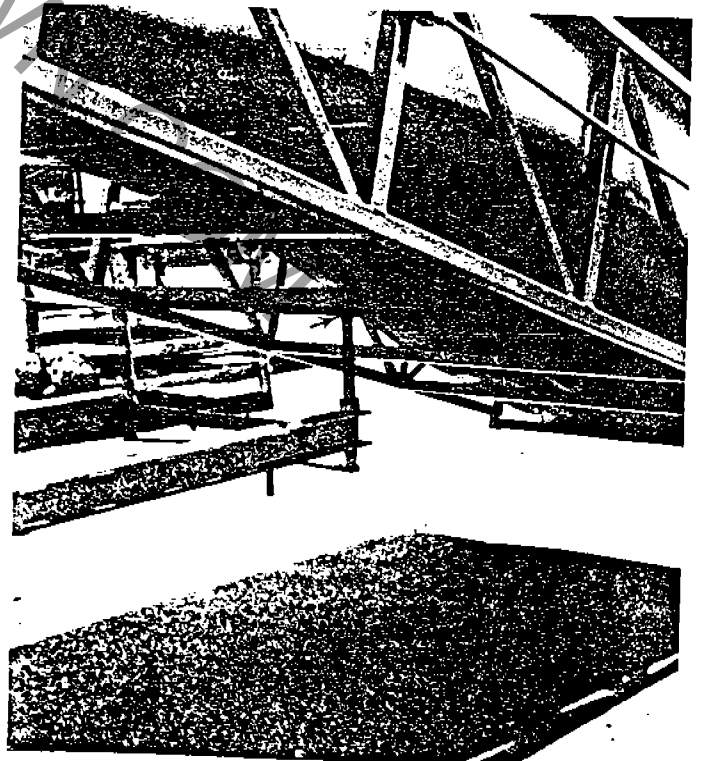
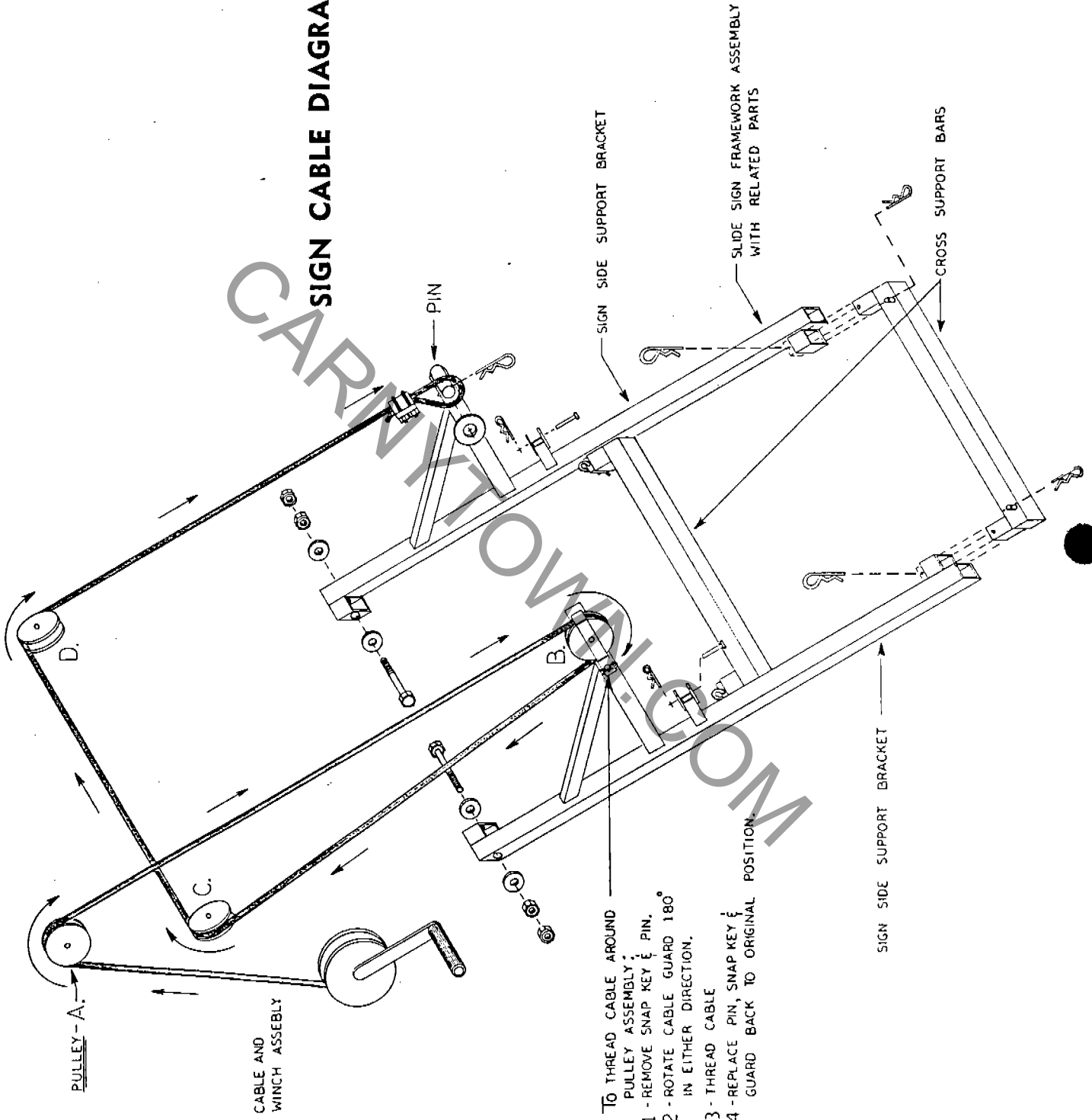


Fig. 31

- g. Raise the crank screws to meet the channel strip. This will support the lower slide frame. (Fig. 32)

SIGN CABLE DIAGRAM



- TO THREAD CABLE AROUND PULLEY ASSEMBLY:
- 1 - REMOVE SNAP KEY & PIN.
 - 2 - ROTATE CABLE GUARD 180° IN EITHER DIRECTION.
 - 3 - THREAD CABLE
 - 4 - REPLACE PIN, SNAP KEY & GUARD BACK TO ORIGINAL POSITION.



Fig. 32

- h. With the lower slide frame resting on the support carriage crank screws, pull the lower slide section and the support carriage out from the trailer frame.

Note: The front end of the lower slide section must be pulled out to the end of the trailer frame in order to clear the upper slide section.

17. RAISE THE UPPER SLIDE SECTION

- a. Remove the pins that hold the upper slide section in traveling position. (Fig. 33)

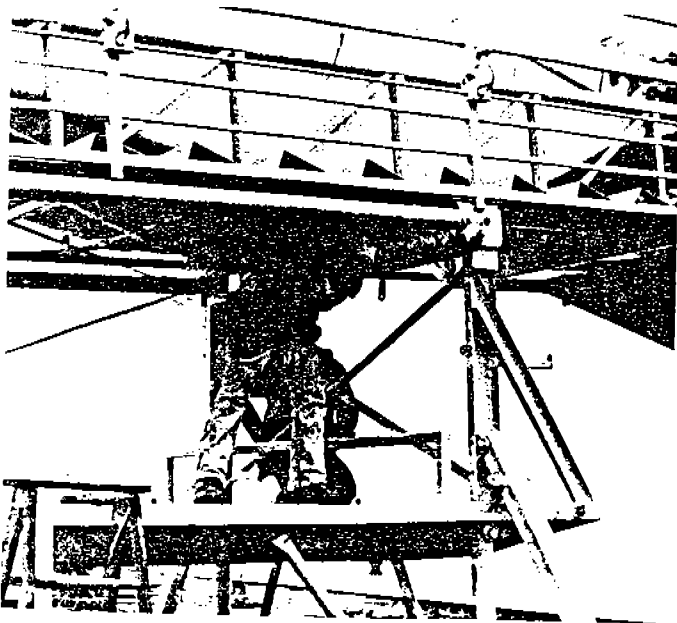


Fig. 33

- b. Remove the pins that hold the support arms against the sides of the upper slide frame. (Fig. 34)

Note: Two men must guide the support arms as they lower from their storage position.

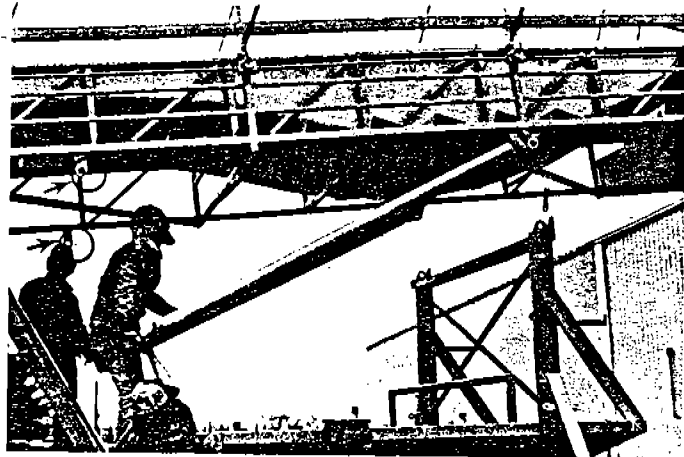


Fig. 34

- c. Turn on the hydraulic system switch. Pull back the control lever to raise the upper slide frame.
- d. *Slowly* raise the upper slide frame. Guide the support arms as they swing forward and hang directly over the standing support brackets. (Fig. 35)

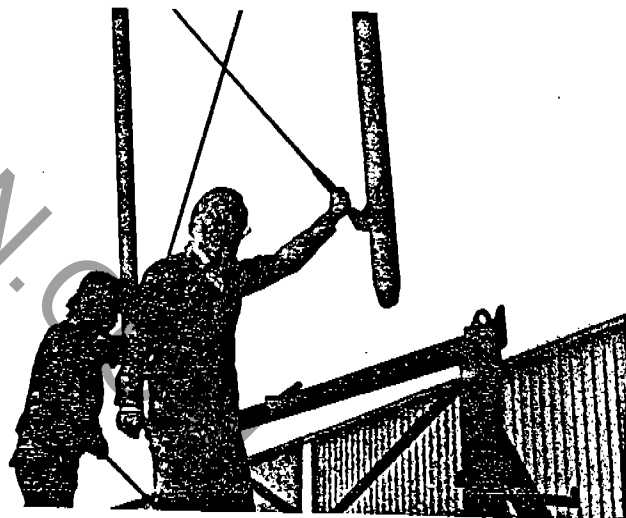


Fig. 35

- e. Using the hydraulic system, adjust the position of the support arms. Line up the holes of the support arms and the ears on the standing support brackets. *Pin and key in place.* (Fig. 36)

Note: Be sure the area is free of obstacles as the upper slide is raised into position.

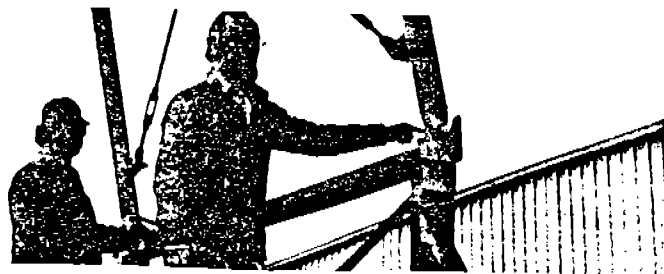


Fig. 36

21. LOWER SLIDE STEPS AND HANDRAIL

- a. Pin the aluminum steps to the ears on the upper slide frame. *Key in place*. Refer to Fig. 1f.
- b. Remove the handrail from storage and install in the sockets in aluminum steps.

22. LOWER LEVEL LIGHTS

- a. Install the last 4 light sections on the lower slide frame.
- b. Tighten set screws.
- c. Plug in lights.
- d. *Note:* The 2 light sections to be installed on the side of the lower level steps are different from all the other light sections. The ends of the light posts that slide into the support slots are less offset than the other posts. (Fig. 41)

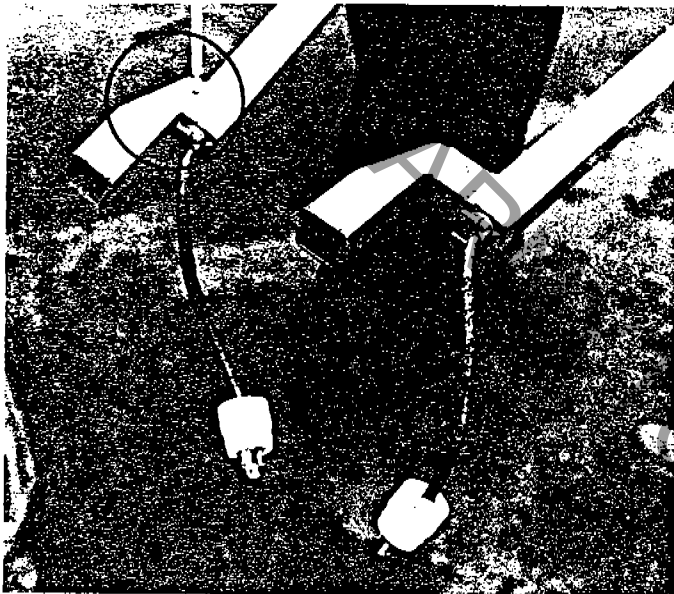


Fig. 41

23. OUTSIDE FENCE

- a. Unload the 16 outside fence sections from the loading rack on front of the trailer.
- b. Unload the fence jacks from the slide bag box.
- c. Set up fence according to sketch. (Sketch 5)

24. TICKET BOOTH (optional)

- a. Slide the 4 sides, the sign and the bottom out of the storage racks.
- b. Remove the top from the front of the lower storage deck. (Fig. 42a)
- c. Remove the seat, money box and shelf from the small tray at the front of the lower storage deck. (Fig. 42b)
- d. Assemble the ticket booth.

25. FINAL DETAILS

- a. Store the storage bracket and the protective cover for the electric sign in the lower storage deck.
- b. Replace the lower storage deck turnbuckles and doors.
- c. Roll out safety rug in front of the tail section.

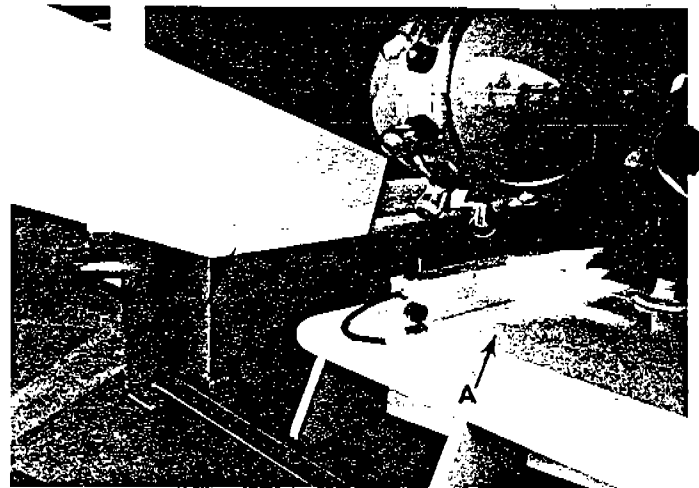


Fig. 42

- d. Position the slide bag box near the steps.

OPERATION OF THE SLIDE

1. A minimum of two operators should operate the Slide.
 - a. One man on top of the Slide.
 - (1) Regulate the flow of sliders so that there are no collisions at the bottom of the Slide.
 - (2) Make sure that all riders are sitting and positioned properly before sliding.
Note: All sliding should be done in an upright sitting position, with feet in the mat pocket and hands holding up the sides of the sliding mat.
CAUTION: Absolutely no sliding should be done backwards or in a prone or standing position.
 - (3) Very small children have a tendency to "fishtail" and should slide with an adult.
 - b. One man at the bottom of the Slide.
 - (1) Regulate the traffic up the steps.
 - (2) Make sure people use handrails as they climb the steps.
 - (3) Assist people to get up after completing their ride.
 - (4) Collect the sliding mats.

SLIDE RELOADING AND ASSEMBLY PART STORAGE

Take the Slide down and store the assembly parts for travel in the reverse sequence of the set-up procedure. To keep the Slide "like new" for years to come, *always* store the assembly parts in their proper storage areas. Listed below are some reminders and tips for safe and easy reloading.

1. LIGHTS

- a. Store the lights alternately from left to right of the trailer.
- b. Be sure that the silver rings around the plastic bubbles are stored in a vertical position. (Fig. 43)

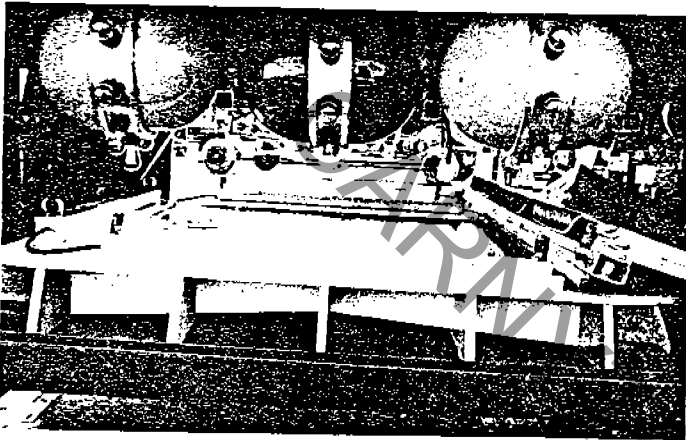


Fig. 43

- c. Tighten the 20 wing nuts on the storage racks for the lights.

2. UPPER SLIDE SECTION

After the upper slide section has been lowered to its traveling position, *pin* it securely to the standing support bracket.

3. After the lower slide section has been pushed into its traveling position, *bolt* the rear of the lower slide section to the trailer frame.

4. ELECTRIC SIGN

CAUTION: Do not release the tension on the cable while lowering the sign with the winch.

5. TICKET BOOTH (optional)

Each ticket booth panel fits into its own storage rack.

Note: Be sure the panel with the door is stored in the second rack from the right.

6. ASSEMBLY PARTS STORED ON THE TOP STORAGE DECK

Note: The left and right #1 storage racks are located next to the hydraulic arm which is at the center of the deck.

- a. Right side of the top storage deck. (Fig. 44)
 - (1) Racks #1 and #2: Electric sign side support brackets.
 - (2) Racks #3 and #4: Electric sign cross support bars.

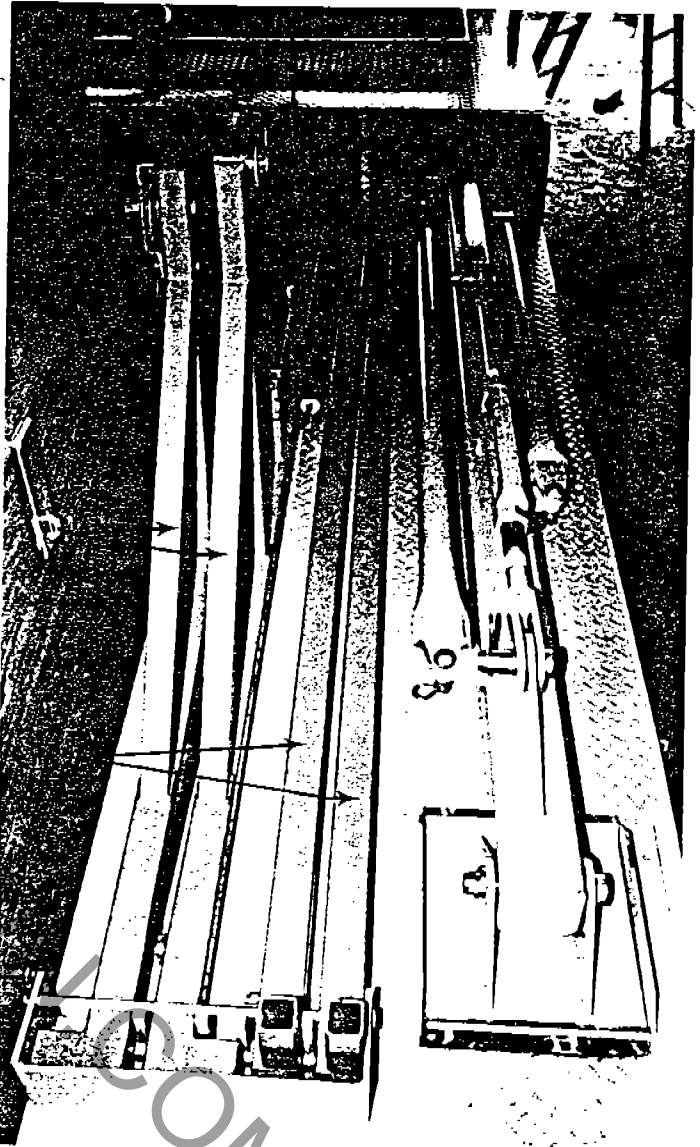


Fig. 44

- (3) Outrigger and attached parts.
 - (a) Short jackstand brace.
 - (b) Turnbuckle
 - (c) Long jackstand brace.

Note: Be sure to install the locking bolt across the ends of the electric sign support assembly parts.

- b. Left side of the top storage deck. (Fig. 45)
 - (1) Racks #1 and #2: Canopy arch support frames.
 - (2) Racks #3, #4 and #5: Canopy support frame bars.
 - (3) Front platform fence section.
 - (4) Small side platform fence section.
 - (5) Outrigger and attached parts.
 - (6) Large side platform fence section.
 - (7) Slide Bag Box.

GENERAL MAINTENANCE

A. LUBRICATION SPECIFICATIONS

1. Recommended oil for hydraulic system.
 - a. Chevron—E.P. Hydraulic #32
 - b. Mobil—D.T.E. #24
 - c. Texaco—Rando oil H.C. #150
 - d. Union—A.W. or A.W. #150
 - e. Arco—A.W.-S #150
2. Recommended grease for all Zerk fittings.
 - a. Chevron—Multi-Motive Grease #1
 - b. Mobil—M.P.
 - c. Texaco—Marfax#1
 - d. Union—M.P. Automotive
 - e. Arco—Multi-Motor

B. SLIDE CARE

1. CAUTION: *DO NOT* use wax or polish to make the Slide faster.
2. Wash occasionally with a very mild soap.
 - a. Heel marks can be removed with any good lacquer thinner.
 - b. *Note:* Do not use any type of abrasive.
3. Occasionally use a spray-on silicone on the sliding surface.

C. BASIC CARE FOR THE HYDRAULIC SYSTEM

1. Check for external leaks.
 - a. Hoses and fittings should be checked regularly for leaks.
 - b. Watch for cracks or wear and replace hoses and fittings when needed.
2. Check the oil reservoir weekly.
 - a. Fluid supply should always be at the specified level.
 - b. When adding oil, be sure to use the correct type.

CAUTION: Running the system with an inadequate oil supply can cause damage to the parts.

D. PLASTIC BUBBLE LIGHTS

Check the inside light bulbs and the inside sockets. The plastic bubble can be opened by removing the bottom screw on the silver ring. (Fig 46)

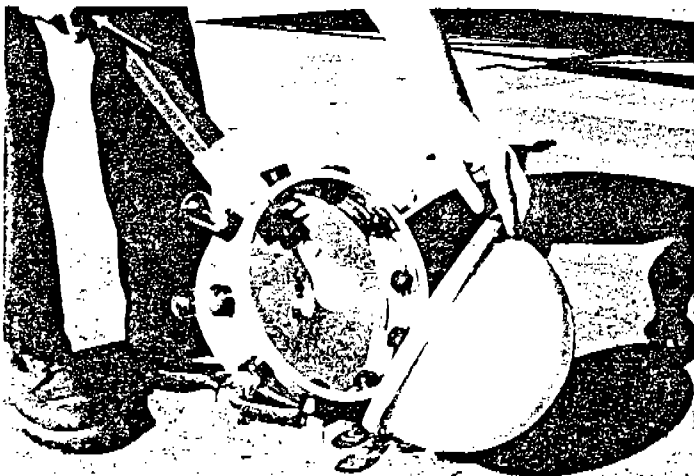


Fig. 46

MAINTENANCE CHECK LIST

COMPONENTS

FREQUENCY

Hydraulic oil	Weekly
Hydraulic lift cylinder	Weekly for leaks
Hydraulic oil tank	Annually
Pins and snap keys	Daily
Steps and Handrails	Daily for condition and keys and pins
Winch and Winch cable	Weekly
Trailer tire	Weekly
Landing gears	Weekly
Main Lead-in wires	Weekly
Electric motor	Monthly
Plugs, Electric boxes and wire	Weekly
Circuit breakers	Monthly

TROUBLESHOOTING GUIDE-HYDRAULIC SYSTEM

A. UPPER SLIDE PLATFORM WILL NOT RAISE

1. Incorrect pump rotation.
Check arrow on hydraulic pump.
2. Hydraulic control valve inoperative.
Check relief valve or replace valve.
3. Oil level low in tank.
4. Upper slide section traveling pins not removed.
5. Check for defective pump.
6. Key in motor or pump coupler half could be sheared.
7. Collapsed or restricted hose to cylinder.

B. EXCESSIVE NOISE

1. Collapsed or restricted inlet hose.
2. Wrong oil weight. (See Lubrication Specifications)
3. Water in oil.
Drain oil and replace it.
4. Air in oil.
Check for leaks in suction line.

C. OVERHEATING

1. Relief valve not working properly.
2. Pump unit excessively worn.
Replace pump unit.

D. SLIDE RAM WILL NOT COME DOWN

1. Inoperative control valve.
2. Flow control shut off. Reset.
3. Slide braces still in place.
4. Collapsed or restricted hose to tank.
5. Bent cylinder.

E. CYLINDER RAM LEAKING

1. Tighten packing nut.
2. Replace packing.
3. If ram is scored, replace it.

TROUBLESHOOTING GUIDE--ELECTRICAL SYSTEM

CAUTION: Turn off main power source before working on the electrical system.

A. PUMP MOTOR WILL NOT ROTATE

1. Electric motor burned out.
Check and replace.
2. Check main switch box for 230 volts, single phase.
3. Burned out heater (#44) in stop and start switch box. (Box is mounted on oil tank.)
4. Check main breaker switch in switch box:
 - a. burned out breaker
 - b. loose wire
 - c. breaker switch turned on
5. Check 20 amp breaker in switch box:
 - a. burned out breaker
 - b. loose wire
 - c. breaker switch on
6. Check connections in generator or main power source.
7. Check for low voltage to the electric motor that would provide insufficient horsepower to turn the pump.
8. Check for defective capacitor in motor.

B. LIGHTS WILL NOT LIGHT

1. Check light bulbs and replace if burned out.
2. Check 15 amp breaker in switch box:
 - a. burned out breaker
 - b. loose wire
 - c. breaker switch on
3. Check for loose wires in receptacle box. (Boxes are mounted on the side of the slide frame.)
4. Check for cut or broken wires.
5. Check if lights are plugged into receptacle box.
6. Check for loose wires in plugs and cords inside the bubble lights.
7. If lights do not flash inside the bubbles, replace flashers.

C. SLIDE HEATER NOT WORKING

1. Check 30 amp breaker in switch box and replace if burned out.
2. Check if the sections are plugged into mating plugs.
3. Check for loose wires in plugs on ends of cords.
4. Check for loose wiring in receptacle boxes.

D. SIGN WILL NOT LIGHT

1. See section B-1, 2, 3, 4.
2. Check for burned out ballast.
3. If lights do not chase, check for loose wiring in flasher timer and replace if inoperative.

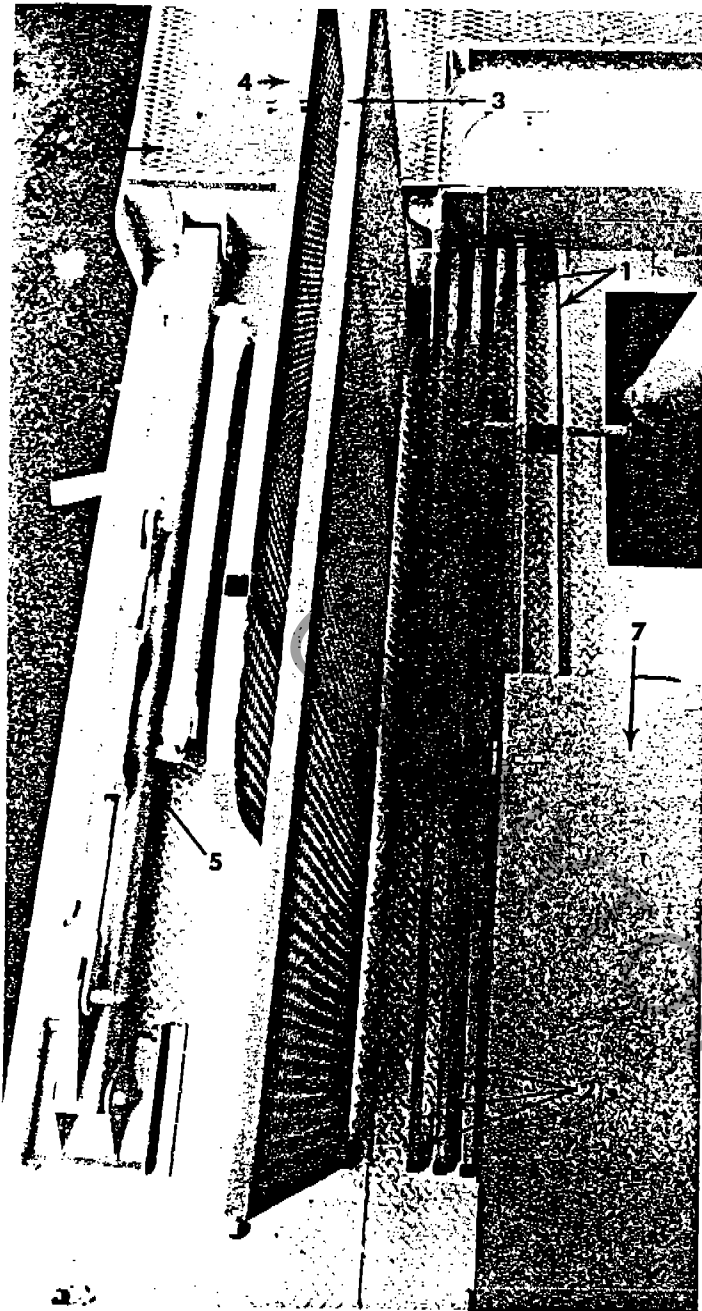


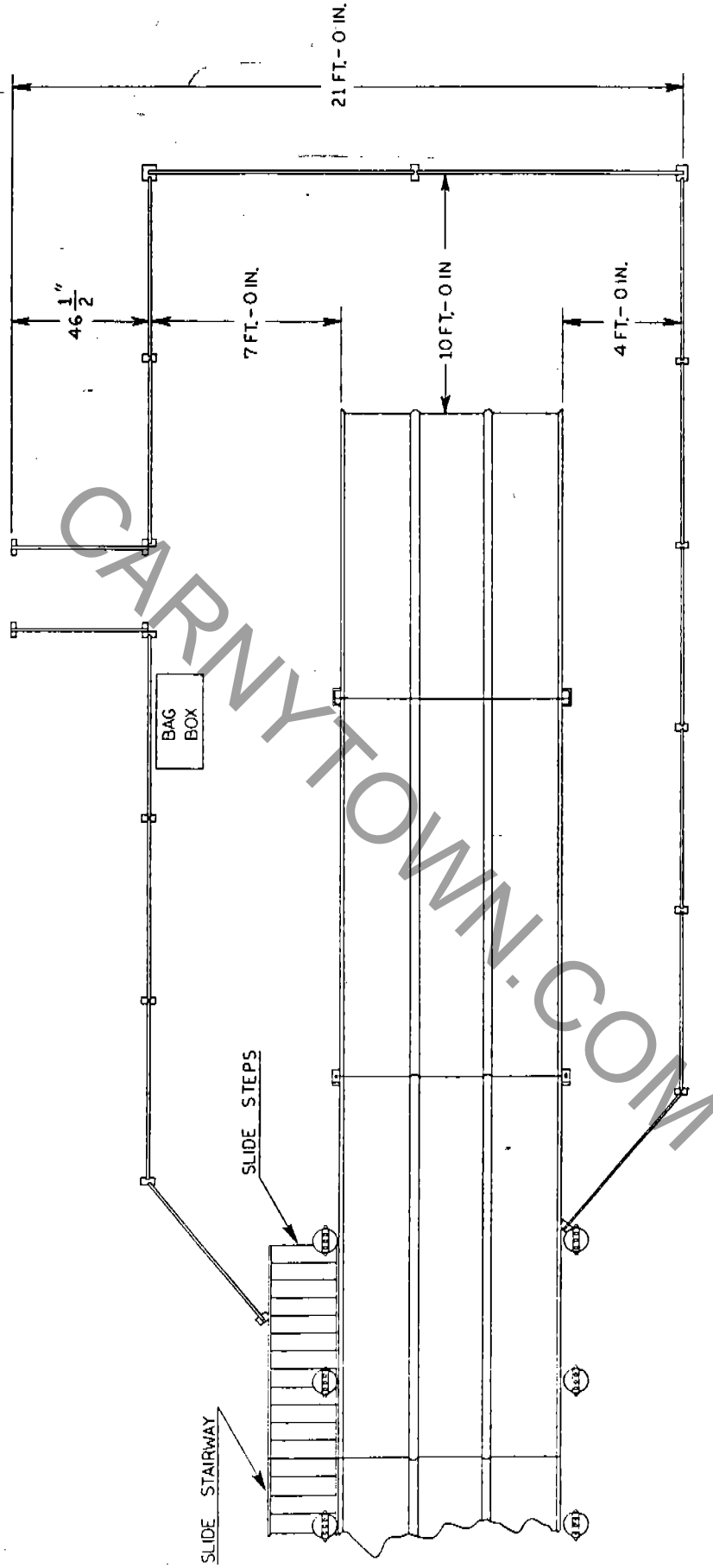
Fig. 45

7. TURNBUCKLES

To prevent the lower storage deck from sagging, be sure all turnbuckles for that area are securely in place.

FENCE LAYOUT DIAGRAM

SKETCH 5



SUGGESTED FENCE LAYOUT PLAN

f. Turn off hydraulic system.

18. SECURE LOWER SLIDE FRAME TO UPPER SLIDE FRAME

- a. Push down on the rear end of the lower slide section in order to tip the front end up to meet the upper slide section. (Fig. 37)

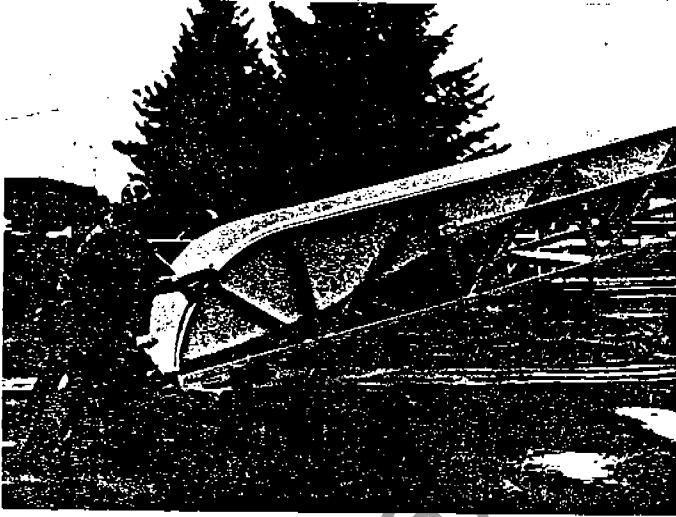


Fig. 37

- b. Rest the front end of the lower slide frame on the protruding support ears on the upper slide frame. (Fig. 38a)
- c. Raise the crank screws until it is possible to align the holes in both upper and lower slide frame sections.
- d. Install bottom bolts. Leave nuts loose. (Fig. 38b)
- e. Using a chain binder on both sides, pull the lower section up to align with the upper section. (Fig. 38c)

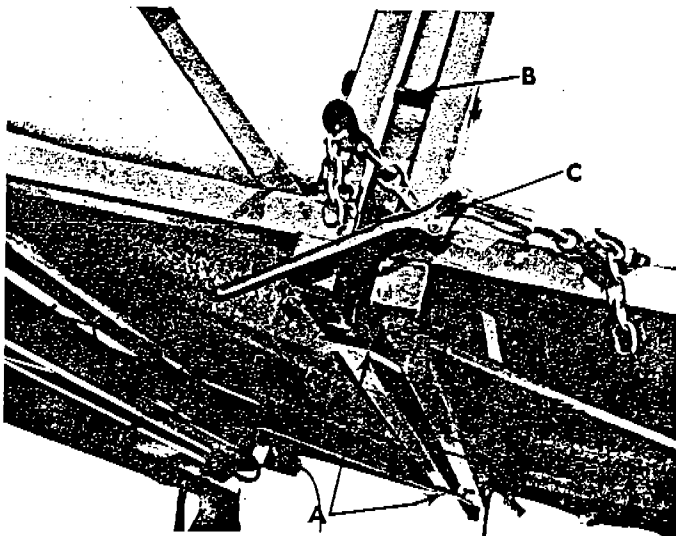


Fig. 38

- f. Install top bolts. *Tighten all nuts.*
- g. Plug in all electric cords to mating plugs.
Note: It is not always necessary to use the heating element. Use the heating element on cool damp days when the moisture on the

sliding surface slows down the speed of the sliders.

19. TAIL SECTIONS

- a. The tail sections are stored on the left side of the lower storage deck.
- b. Fasten the curved tail section to the lower slide frame with 2 pins. (Fig. 39)

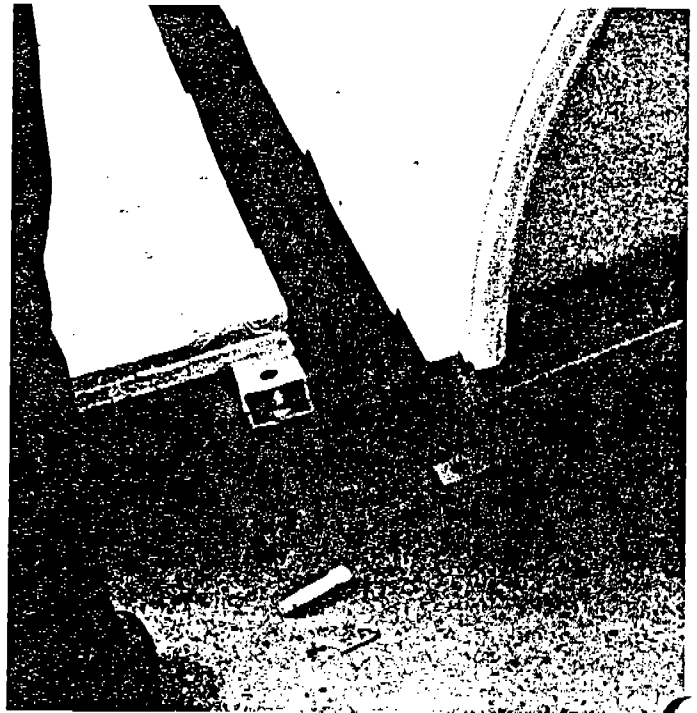


Fig. 39

- c. Align the straight tail section with the curved tail section.
- d. Lift the curved tail section so that the locking sockets can be fitted over the mating locking sockets on the straight tail section. (Fig. 40)

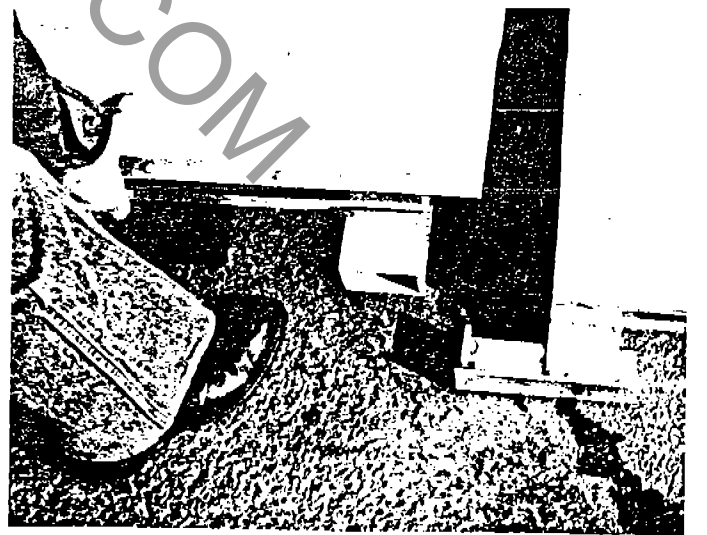
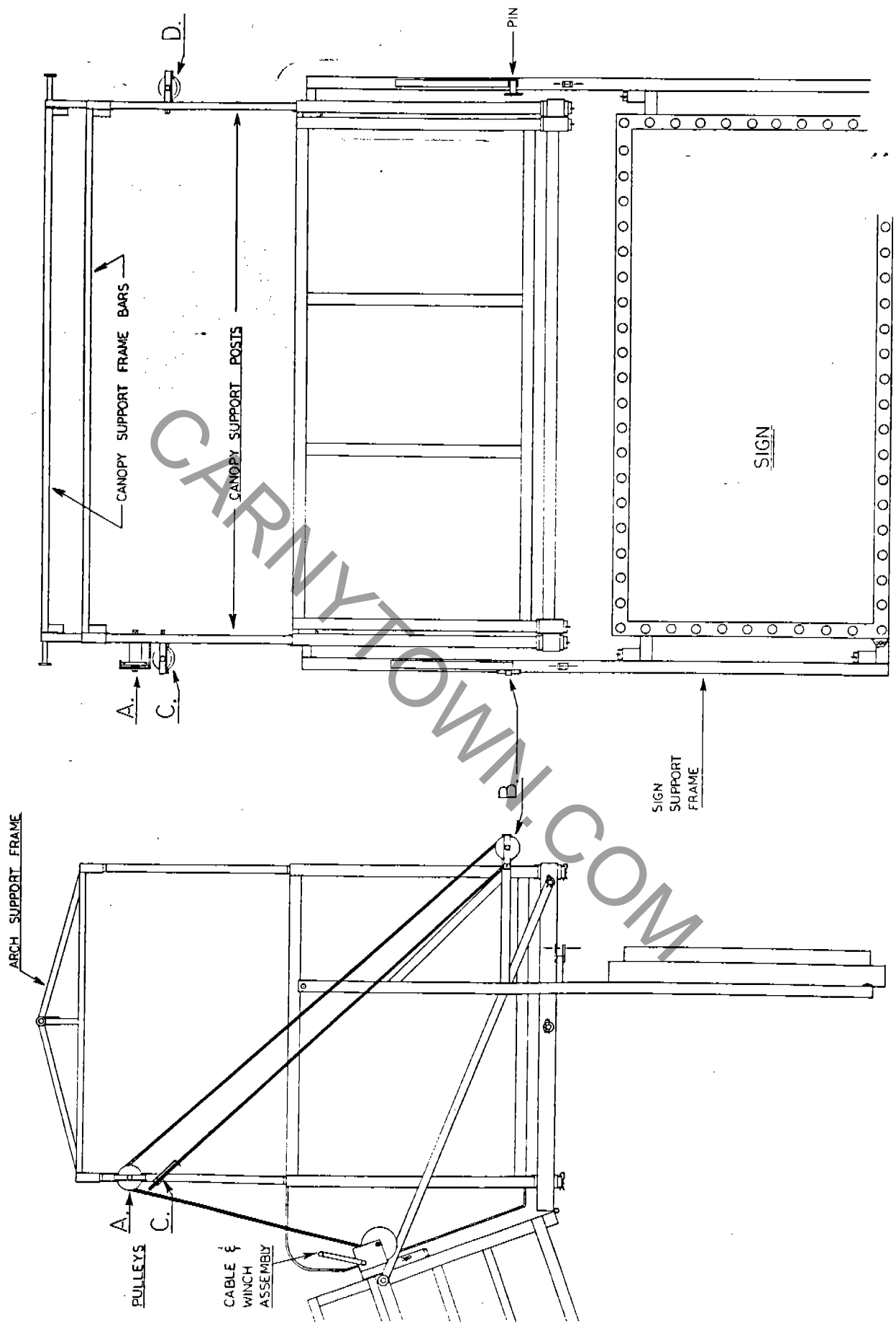


Fig. 40

20. DISASSEMBLE STEPLADDER

- a. Store ladder assembly parts on the side frame of the aluminum steps.
- b. Bolt and pin assembly parts in place. Refer to Fig. 9.

SIGN CABLE & CANOPY ASSEMBLY



SEE SHEET -2- FOR SIGN MOUNTING DETAILS AND CABLE DIAGRAM

SKETCH

- c. Remove the cable from the pin on the platform floor. String the cable for the sign as per sketch. (Sketches 3 and 4)
- d. **CAUTION:** ALL snap keys for the sign support frame must be securely in place before installing the electric sign. The keys support the weight of the sign.

13. INSTALL ELECTRIC SIGN

- a. Remove the protective sign cover and set it aside for later storage.
 - b. Slide the electric sign onto the support frame.
- Note:* The lettering on the sign must be upside down to the installer. (Fig. 24)

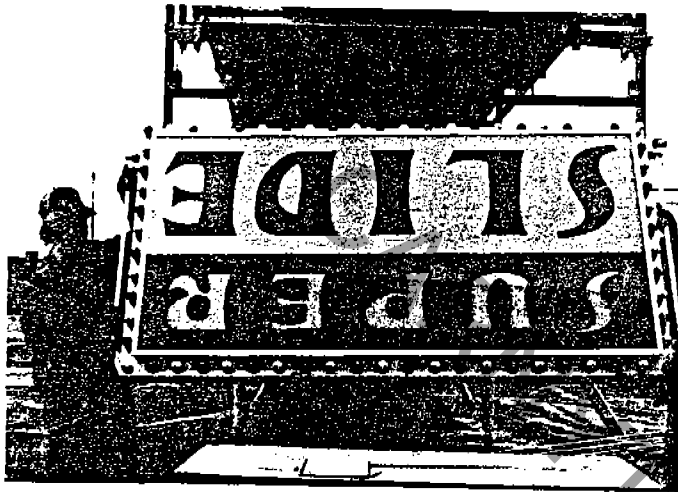


Fig. 24

- (1) Fit the holes in the sign ears over the pins on the bottom cross support bar. Snap key the pins.
- (2) Plug in sign to receptacle.
- c. Using the winch, slowly crank the sign up into position. (Fig. 25)

CAUTION: Do not release the tension of the cable while raising the sign.

- (1) Be sure the area is free of obstacles as the sign is raised into position.
- (2) Remember, when the sign is raised parallel to the ground, it extends 10 feet from the end of the top front slide section.

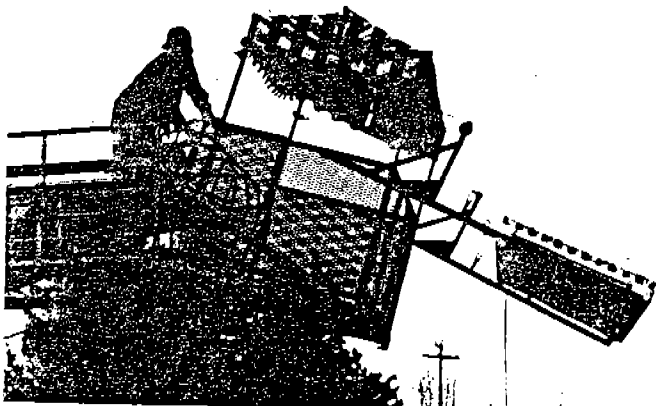


Fig. 25

- d. Working from the upper platform, pin the sign in the upright position to the canopy support frame. Snap key in place. (Fig. 26).

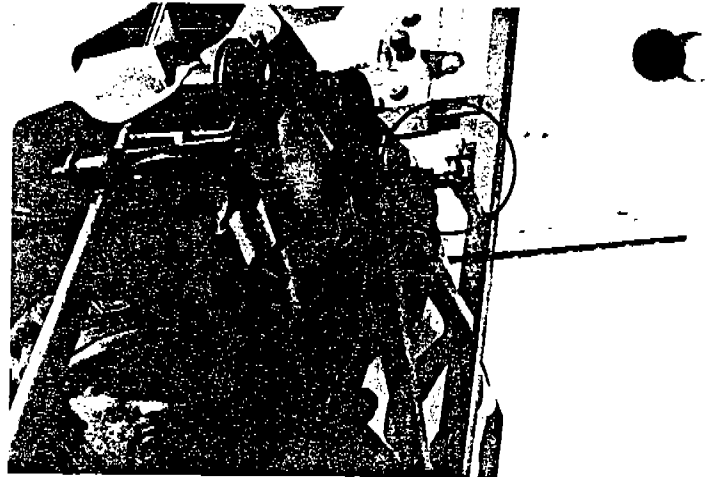


Fig. 26

14. REMOVE WINCH

- a. Unstring the winch cable.
- b. Remove winch and store in upper storage box.

15. LIGHTS—UPPER SLIDE SECTION

- a. Loosen the 20 wing nuts on the storage racks and remove light poles.
- b. *Note:* The last 4 light posts toward the back of the storage area are to be installed last on the lower slide section frame. Install the lights after the lower slide section and the aluminum steps are in place.
- c. Install the light poles in the sockets located on the outside of the upper slide frame. (Fig. 27a)
- d. Plug in the lights (b) and tighten the set screws (c). (Fig. 27 b and c)

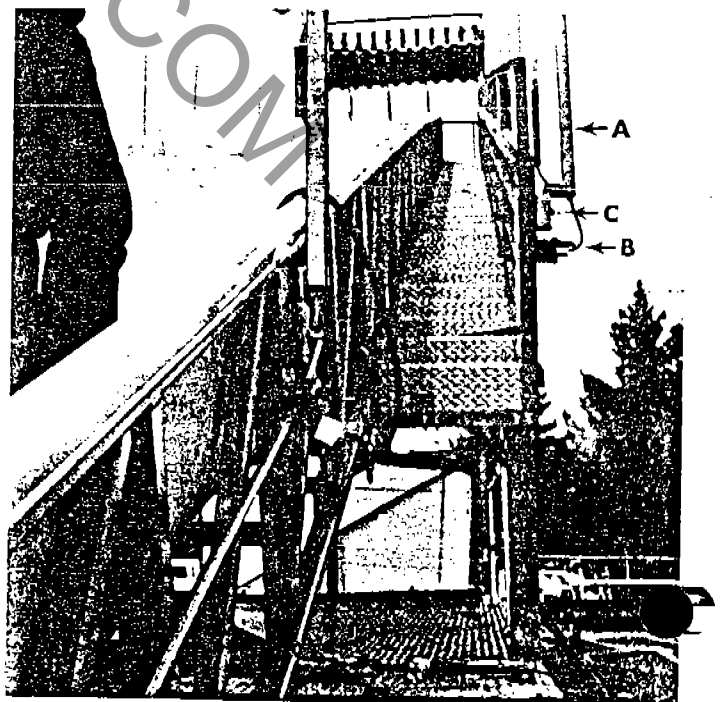


Fig. 27

from its folded position. Allow the platform to hang straight down from the frame.

CAUTION: As the platform is lowered, be sure the cable is on the *outside* of the hanging support bar. (Fig. 16)

- d. Once the platform is hanging straight down, a man working from the ground level must push the platform forward, while the man above reverses the action of the winch and pulls the platform up into position. (Sketch 2)

CAUTION: Be sure the area is free of obstacles as the platform is raised into position.

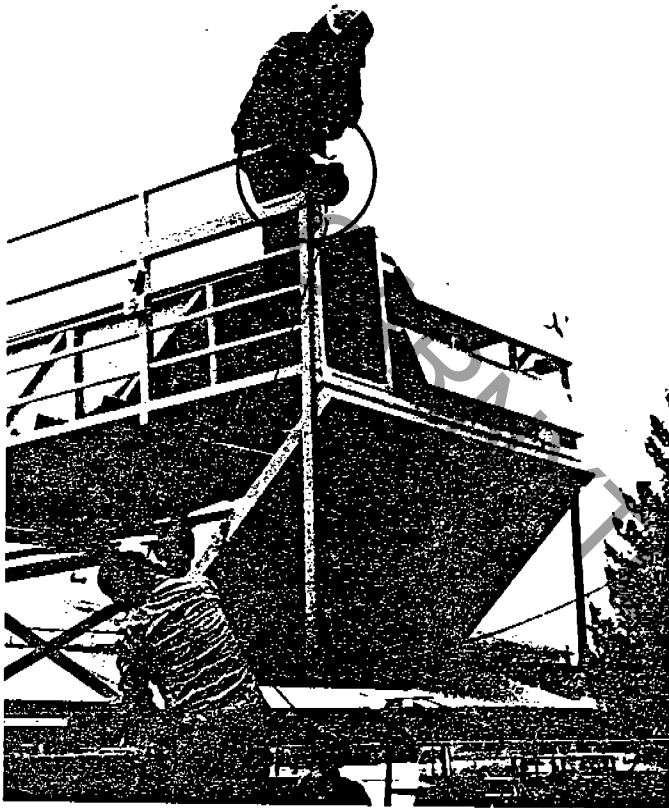


Fig. 16

- e. Working from the stepladder, secure the left and right support bars to the pins on the sides of the platform floor. *Snap key in place.* (Sketch 2d)

8. UPPER PLATFORM FENCE

- a. Remove the wing nut that secures the large side fence section to the gooseneck deck. Remove the large fence section. Refer to Fig. 45 (6).
- b. The small side fence and the front fence section are stored on the left side of the top storage deck. Refer to Fig. 45 (3) (4).
- c. Hand the fence sections up to the man working on the upper platform.
- d. Install the side fence sections first.
 - (1) The small side section is placed on the winch side.
 - (2) Insert the fence legs into the sockets along the edge of the platform floor.
- e. Hook the front section into the side sections. (Fig. 17)

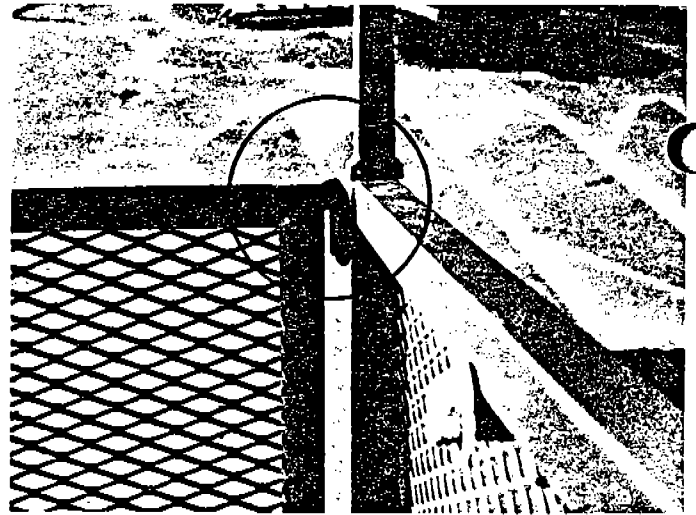


Fig. 17

- f. Working from the stepladder, *snap key* all fence posts in place. Insert the rear keys first. (Fig. 18)

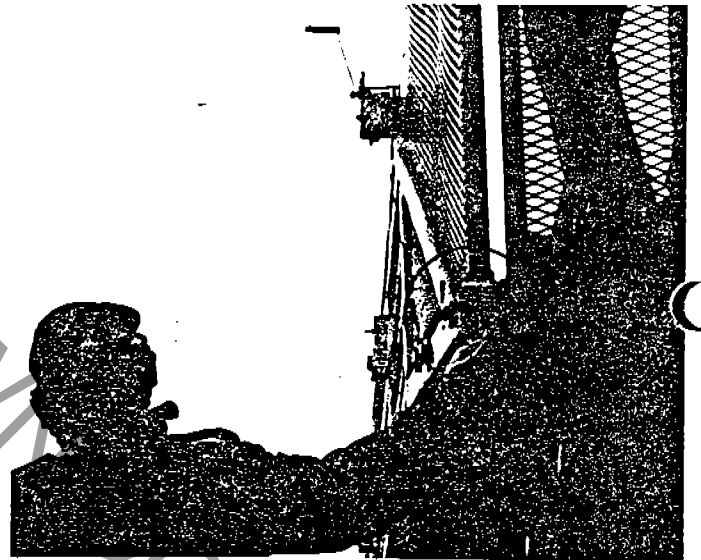


Fig. 18

9. CANOPY FRAME AND CLOTH CANOPY

a. Canopy Support Posts.

- (1) The 4 corner canopy support posts are stored in the upper storage box.
- (2) The post with the double pulley is placed on the winch side.
- (3) Working from the platform, install the corner support posts in the sockets in the platform fence sections. (Fig. 19)



Fig. 19

b. Install jackstand braces.

(1) The 4 jackstand braces (2 short, 2 long) are pinned to the storage ears on the left and right outriggers. (Fig. 13)

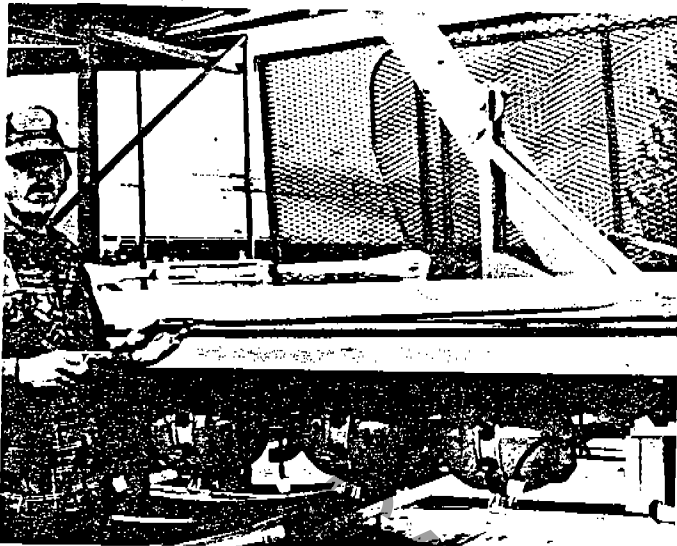


Fig. 13

(2) Using the same storage pins, secure one end of the long brace to the lower outside ear of the jackstand. Swing the other end back and up, and pin it to the trailer frame ear. *Snap key in place.* (Fig. 14a)

(3) Pin one end of the short brace to the lower inside ear of the jackstand. Swing the other end in and up, and pin it to the trailer frame ear. *Snap key in place.* (Fig. 14b)

CAUTION: Be sure to snap key all pins.

- c. Unscrew the jackstand feet on some blocks until some load has been applied to the jackstands. (Fig. 14c)
- d. The outriggers are stored on the left and right sides of the top storage deck.
- e. Using the same pin that holds the outrigger to the loading bracket, pin the top of the outrigger to the ear of the standing support bracket above the jackstand. *Snap key in place.* (Fig. 14d)
- f. With the base of the outrigger resting on a block, remove the top pin that holds the turnbuckle to the outrigger. Swing the turnbuckle down. *Pin and key* the turnbuckle to the ear on the lower outside of the jackstand. (Fig. 14e)

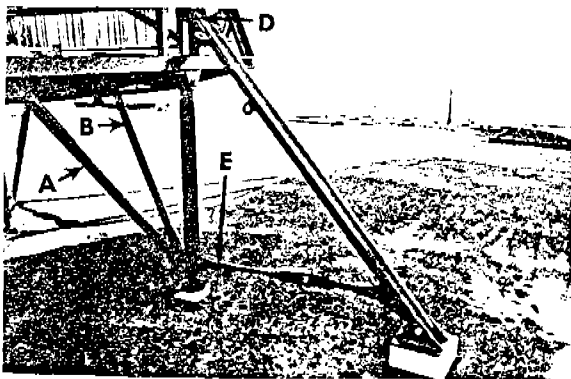


Fig. 14

g. Tighten the turnbuckle to increase the pressure on the base of the outrigger. Repeat other side.

5. UPPER SLIDE HANDRAILS

- a. Unfold the handrail sections along the side of the upper slide frame to an upright position. (Refer to Fig. 1e)
- b. Secure the handrail sections in place with 10 ($\frac{3}{8}$ " x $\frac{3}{4}$ ") bolts. *Note:* The bolts are stored in the tool box.

6. WINCH

- a. Working from the top of the forward section of the upper slide frame, remove the winch from the upper storage box. *Note:* The upper storage box is located under the front of the top slide section. (Refer to Fig. 2a)
- b. Install the winch to the winch-support assembly socket which is located on the top forward handrail support post. *Pin in place.* (Fig. 15)

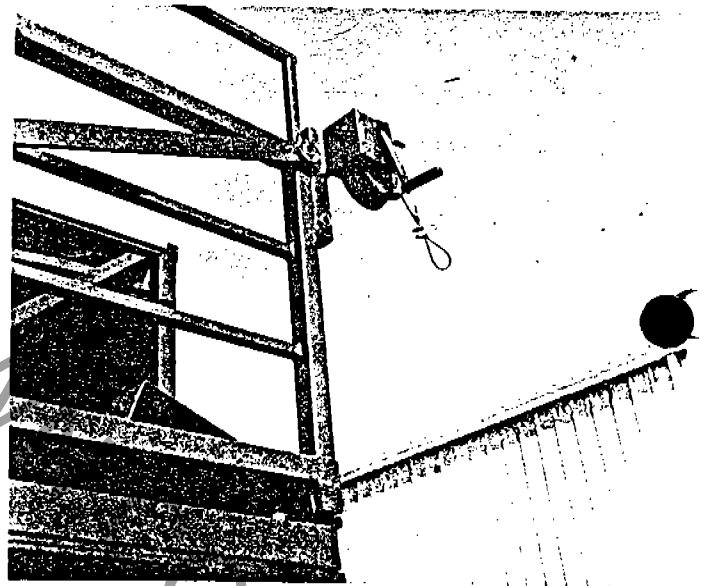


Fig. 15

- c. Working from the stepladder, connect the cable to the pin located on the side of the upper platform floor. (Sketch 2a)

CAUTION: Be sure to install a washer and a snap key to secure the cable to the platform pin. These securing devices hold the weight of the platform floor as it is raised into position.

- d. Tighten the cable tension slightly with the winch.

7. UPPER PLATFORM AND PLATFORM SUPPORT BARS

- a. Working from the stepladder, remove the platform support bars from the two side pins on the main slide frame. (Sketch 2b) Allow the bars to hang down from the frame.
- b. Working from the stepladder, remove the snap keys and bars from the pins that secure the upper platform in its folded position under the slide frame. (Sketch 2c)
- c. Using the winch, *slowly* lower the platform

SLIDE SET-UP

The Slide can easily be set up in 2 hours by 3 men.

All the equipment that is needed to set up the Slide can be found in the tool box, slide bag box, upper storage box or on the assembly parts.

The Slide is provided with a 6' x 10' safety mat which is to be placed at the end of the sliding surface when in operation.

1. PREPARE TRAILER TO UNLOAD

- a. Crank front landing gears down (Fig. 3)

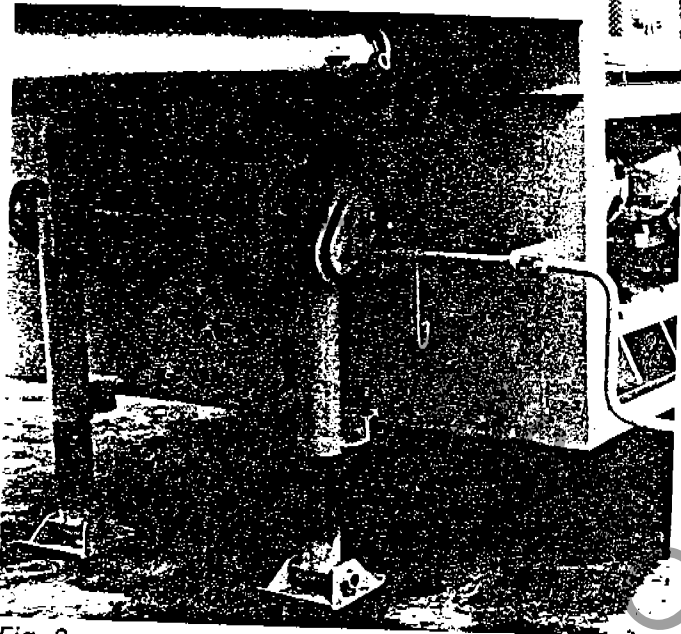


Fig. 3

- b. Remove tractor from trailer.
- c. Lower rear landing gears to the ground. (Fig. 4)

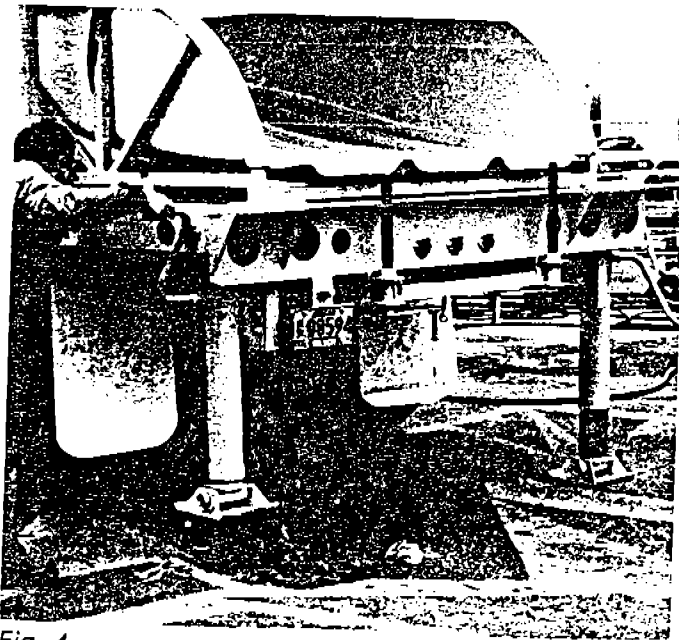


Fig. 4

- d. Level the trailer side to side, at both front (5) and rear (6) and along the length (7). (Figs. 5, 6, 7)

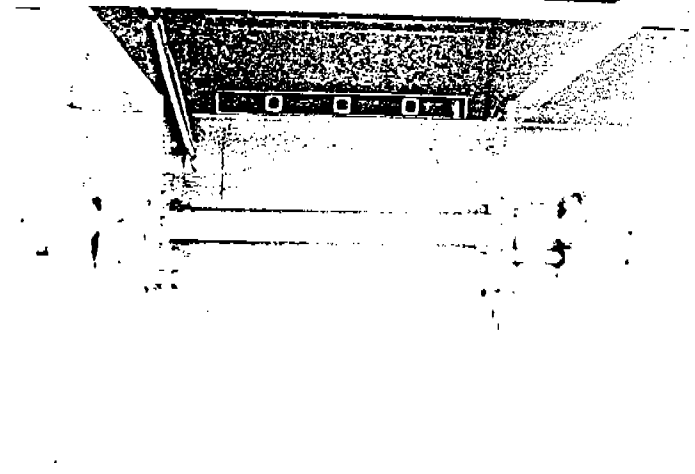


Fig. 5

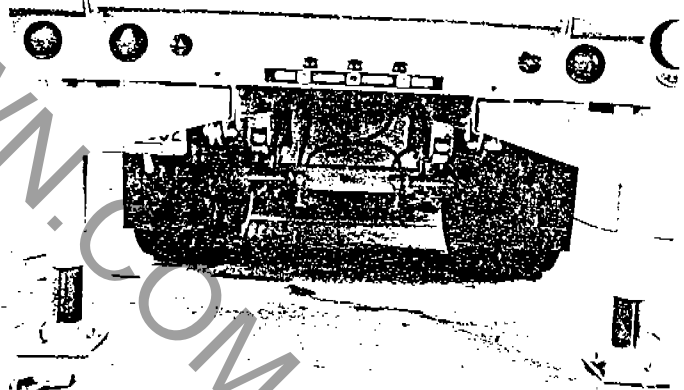


Fig. 6

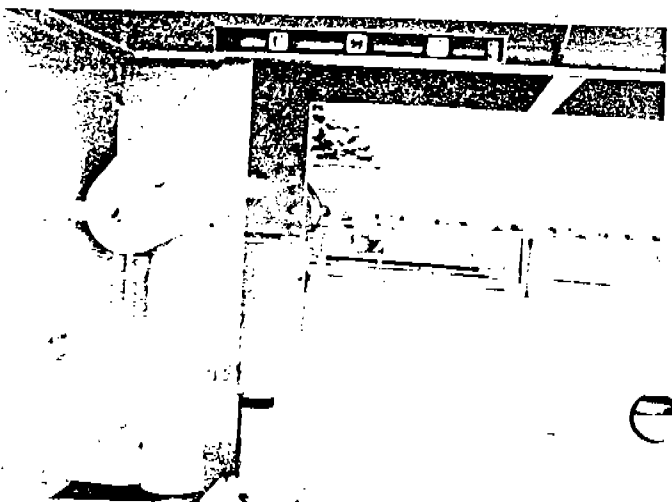


Fig. 7

SPECIFICATIONS

CAPACITY	750 customers per hour
LIGHTING FOR THE SLIDE AND THE ELECTRIC SIGN	200 - 11 watt bulbs, 20 - 60 watt bulbs, 4 - 40 watt fluorescent tubes 20 plastic bubble light fixtures. Each is ringed with 10 exterior lights and each has a flashing interior light. Electric sign has chasing incandescent bulbs and 6 fluorescent interior tubes.
TOTAL POWER REQUIRED	16 KW
SET-UP & TAKE-DOWN TIME	2 hours with 3 men.
MAXIMUM HEIGHT	35 feet
MINIMUM WIDTH WITHOUT FENCE	8 feet
MINIMUM WIDTH WITH FENCE	21 feet
SLIDING LENGTH	100 feet
TOTAL SPACE REQUIRED TO SET-UP, INCLUDING FENCE AREA	35 x 21 x 120 feet
LENGTH OF TRAILER	40 feet
GROSS WEIGHT OF TRAILER	22,000 pounds

POWER SUPPLY REQUIREMENTS

1. The maximum power needed for the sign and the Slide heaters is 16 KW.
2. The Slide requires 220V single phase *with ground*.

CAUTION: Failure to supply an adequate ground to the frame can cause serious electric shock hazard. Proper grounding prevents the metal parts of the Slide from being energized (to high voltage) in the event of a short circuit. The lead supplied with the Slide contains a ground wire that may be connected to ground at the power supply. Another means of grounding is with a ground rod. Check local regulations for ground rod requirements and specifications.