

Kilinski
"Super Slide"
Non-Kiddie

SUPER SLIDE

OPERATION & MAINTENANCE MANUAL

KILINSKI MFG. COMPANY

P.O. Box 12768
Salem, Oregon 97309
(503) 363-3665

Dear Super Slide Owner,

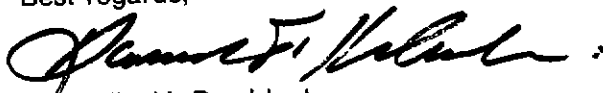
The enclosed operation and maintenance manual is intended to help you to have a trouble-free operation. However, due to a work overload in our engineering department, your Super Slide manual does not include the following:

1. Parts drawings that correspond to the parts lists herein supplied.
2. Parts list and parts drawing for the main lift cylinder.
3. Electrical schematic.
4. Hydraulic schematic.

You will receive copies of these drawings and lists as soon as they are completed.

We sincerely hope that these temporary omissions do not inconvenience you. Thank you for your patience.

Best regards,



Dan Kilinski, President
Kilinski Mfg. Company

CARNY-TOWN.COM

TROUBLESHOOTING GUIDE - ELECTRICAL SYSTEM
CAUTION: Turn off main power source before working on the electrical system.

A. PUMP MOTOR WILL NOT ROTATE

1. Electric motor burned out.
Check and replace.
2. Check main switch box for 230 volts, single phase.
3. Burned out heater (#44) in stop and start switch box. (Box is mounted on oil tank.)
4. Check main breaker switch in switch box:
 - a. burned out breaker
 - b. loose wire
 - c. breaker switch turned on
5. Check 20 amp breaker in switch box:
 - a. burned out breaker
 - b. loose wire
 - c. breaker switch on
6. Check connections in generator or main power source.
7. Check for low voltage to the electric motor that would provide insufficient horsepower to turn the pump.
8. Check for defective capacitor in motor.

B. LIGHTS WILL NOT LIGHT

1. Check light bulbs and replace if burned out.
2. Check 15 amp breaker in switch box:
 - a. burned out breaker
 - b. loose wire
 - c. breaker switch on
3. Check for loose wires in receptacle box. (Boxes are mounted on the side of the slide frame.)
4. Check for cut or broken wires.
5. Check if lights are plugged into receptacle box.
6. Check for loose wires in plugs and cords inside the bubble lights.
7. If lights do not flash inside the bubbles, replace flashers.

C. SLIDE HEATER NOT WORKING

1. Check 30 amp breaker in switch box and replace if burned out.
2. Check if the sections are plugged into mating plugs.
3. Check for loose wires in plugs on ends of cords.
4. Check for loose wiring in receptacle boxes.

D. SIGN WILL NOT LIGHT

1. See section B-1, 2, 3, 4.
2. Check for burned out ballast.
3. If lights do not chase, check for loose wiring in flasher timer and replace if inoperative.

A. UPPER SLIDE PLATFORM WILL NOT RAISE

1. Incorrect pump rotation.
Check arrow on hydraulic pump.
2. Hydraulic control valve inoperative.
Check relief valve or replace valve.
3. Oil level low in tank.
4. Upper slide section traveling pins not removed.
5. Check for defective pump.
6. Key in motor or pump coupler half could be sheared.
7. Collapsed or restricted hose to cylinder.

B. EXCESSIVE NOISE

1. Collapsed or restricted inlet hose.
2. Wrong oil weight. (See Lubrication Specifications)
3. Water in oil.
Drain oil and replace it.
4. Air in oil.
Check for leaks in suction line.

C. OVERHEATING

1. Relief valve not working properly.
2. Pump unit excessively worn.
Replace pump unit.

D. SLIDE RAM WILL NOT COME DOWN

- | | |
|--|---|
| <ol style="list-style-type: none"> 1. Inoperative control valve. 2. Flow control shut off. Reset. 3. Slide braces still in place. | <ol style="list-style-type: none"> 4. Collapsed or restricted hose to tank. 5. Bent cylinder. |
|--|---|

E. CYLINDER RAM LEAKING

- | | |
|--|--|
| <ol style="list-style-type: none"> 1. Tighten packing nut. 2. Replace packing. | <ol style="list-style-type: none"> 3. If ram is scored, replace it. |
|--|--|



Fig. 45

7. TURNBUCKLES

To prevent the lower storage deck from sagging, be sure all turnbuckles for that area are securely in place.

GENERAL MAINTENANCE

MAINTENANCE CHECK LIST

A. LUBRICATION SPECIFICATIONS

1. Recommended oil for hydraulic system.
 - a. Chevron—E.P. Hydraulic #32
 - b. Mobil—D.T.E. #24
 - c. Texaco—Rando oil H.C. #150
 - d. Union—A.W. or A.W. #150
 - e. Arco—A.W.-S #150
2. Recommended grease for all Zerk fittings.
 - a. Chevron—Multi-Motive Grease #1
 - b. Mobil—M.P.
 - c. Texaco—Marfax#1
 - d. Union—M.P. Automotive
 - e. Arco—Multi-Motor

B. SLIDE CARE

1. **CAUTION: DO NOT** use wax or polish to make the Slide faster.
2. Wash occasionally with a very mild soap.
 - a. Heel marks can be removed with any good lacquer thinner.
 - b. *Note:* Do not use any type of abrasive.
3. Occasionally use a spray-on silicone on the sliding surface.

C. BASIC CARE FOR THE HYDRAULIC SYSTEM

1. Check for external leaks.
 - a. Hoses and fittings should be checked regularly for leaks.
 - b. Watch for cracks or wear and replace hoses and fittings when needed.
2. Check the oil reservoir weekly.
 - a. Fluid supply should always be at the specified level.
 - b. When adding oil, be sure to use the correct type.

CAUTION: Running the system with an inadequate oil supply can cause damage to the parts.

D. PLASTIC BUBBLE LIGHTS

Check the inside light bulbs and the inside sockets. The plastic bubble can be opened by removing the bottom screw on the silver ring. (Fig 46)

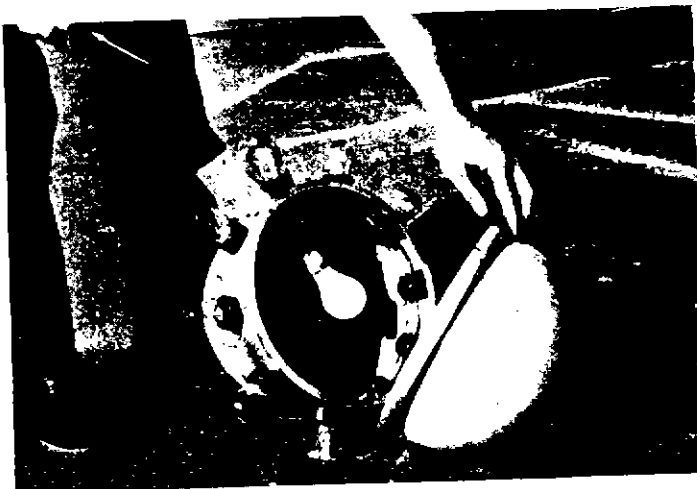


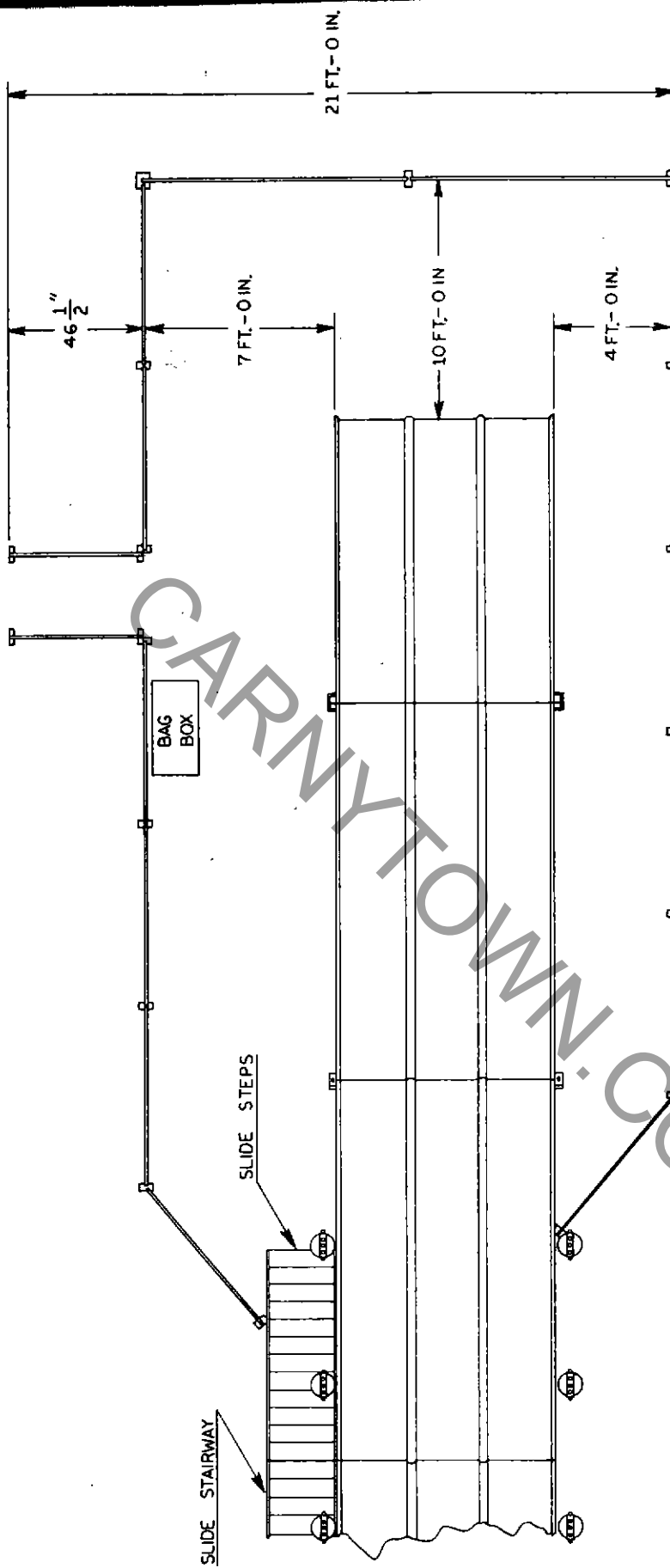
Fig. 46

COMPONENTS

FREQUENCY

Hydraulic oil	Weekly
Hydraulic lift cylinder	Weekly for leaks
Hydraulic oil tank	Annually
Pins and snap keys	Daily
Steps and Handrails	Daily for condition and keys and pins
Winch and Winch cable	Weekly
Trailer tire	Weekly
Landing gears	Weekly
Main Lead-in wires	Weekly
Electric motor	Monthly
Plugs, Electric boxes and wire	Weekly
Circuit breakers	Monthly

FENCE LAYOUT DIAGRAM



SUGGESTED FENCE LAYOUT PLAN

SLIDE RELOADING AND ASSEMBLY PART STORAGE

Take the Slide down and store the assembly parts for travel in the reverse sequence of the set-up procedure. To keep the Slide "like new" for years to come, *always* store the assembly parts in their proper storage areas. Listed below are some reminders and tips for safe and easy reloading.

1. LIGHTS

- a. Store the lights alternately from left to right of the trailer.
- b. Be sure that the silver rings around the plastic bubbles are stored in a vertical position. (Fig. 43)

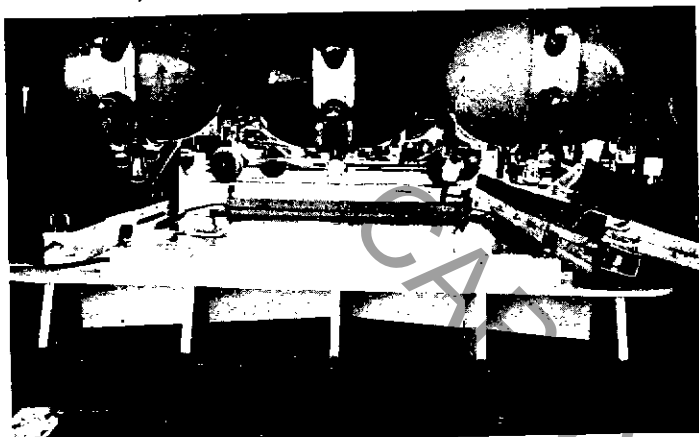


Fig. 43

- c. Tighten the 20 wing nuts on the storage racks for the lights.

2. UPPER SLIDE SECTION

After the upper slide section has been lowered to its traveling position, *pin it* securely to the standing support bracket.

3. After the lower slide section has been pushed into its traveling position, *bolt* the rear of the lower slide section to the trailer frame.

4. ELECTRIC SIGN

CAUTION: Do not release the tension on the cable while lowering the sign with the winch.

5. TICKET BOOTH

Each ticket booth panel fits into its own storage rack.

Note: Be sure the panel with the door is stored in the second rack from the right.

6. ASSEMBLY PARTS STORED ON THE TOP STORAGE DECK

Note: The left and right #1 storage racks are located next to the hydraulic arm which is at the center of the deck.

- a. Right side of the top storage deck. (Fig. 44)
 - (1) Racks #1 and #2: Electric sign side support brackets.
 - (2) Racks #3 and #4: Electric sign cross support bars.

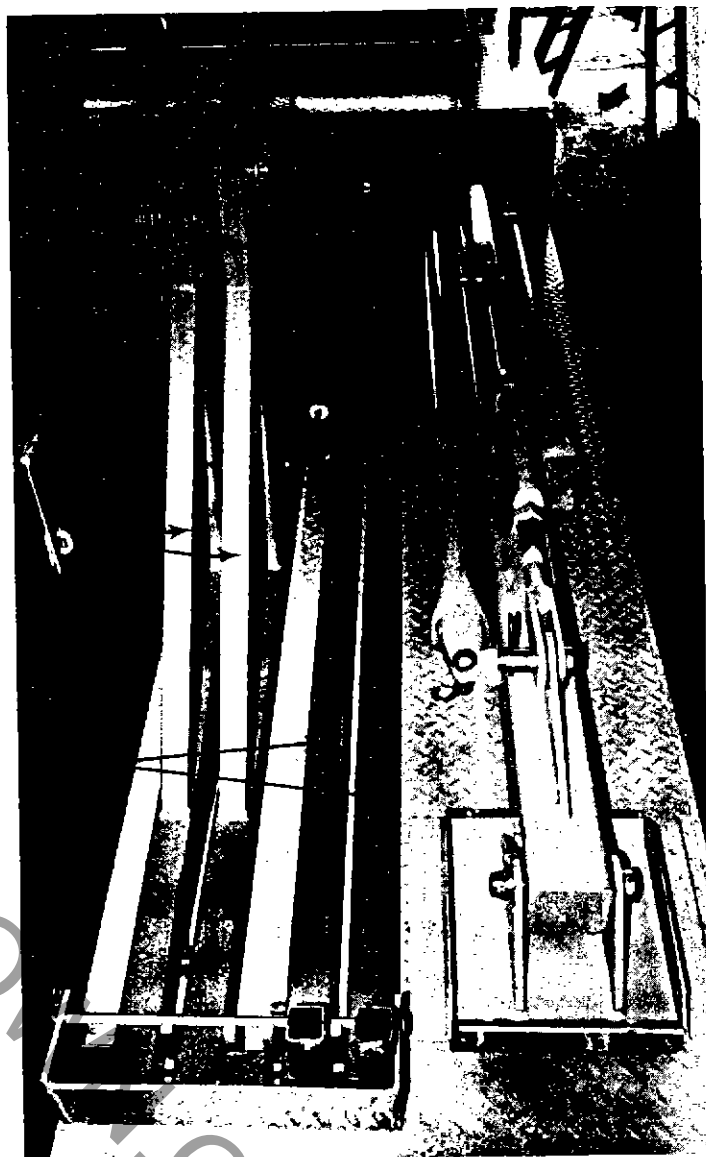


Fig. 44

- (3) Outrigger and attached parts.
 - (a) Short jackstand brace.
 - (b) Turnbuckle
 - (c) Long jackstand brace.

Note: Be sure to install the locking bolt across the ends of the electric sign support assembly parts.

- b. Left side of the top storage deck. (Fig. 45)
 - (1) Racks #1 and #2: Canopy arch support frames.
 - (2) Racks #3, #4 and #5: Canopy support frame bars.
 - (3) Front platform fence section.
 - (4) Small side platform fence section.
 - (5) Outrigger and attached parts.
 - (6) Large side platform fence section.
 - (7) Slide Bag Box.

f. Turn off hydraulic system.

18. SECURE LOWER SLIDE FRAME TO UPPER SLIDE FRAME

- a. Push down on the rear end of the lower slide section in order to tip the front end up to meet the upper slide section. (Fig. 37)

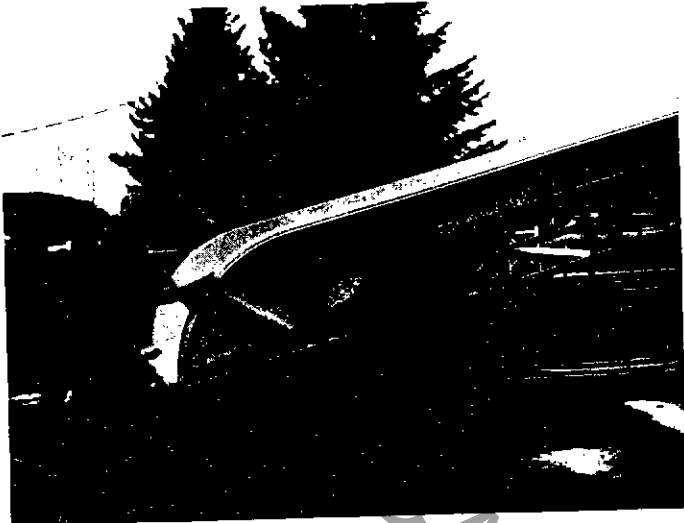


Fig. 37

- b. Rest the front end of the lower slide frame on the protruding support ears on the upper slide frame. (Fig. 38a)
- c. Raise the crank screws until it is possible to align the holes in both upper and lower slide frame sections.
- d. Install bottom bolts. Leave nuts loose. (Fig. 38b)
- e. Using a chain binder on both sides, pull the lower section up to align with the upper section. (Fig. 38c)

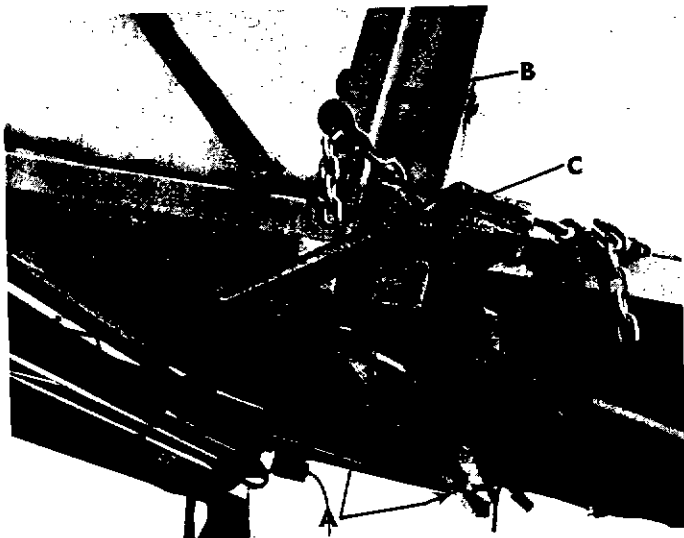


Fig. 38

- f. Install top bolts. *Tighten all nuts.*
- g. Plug in all electric cords to mating plugs.
Note: It is not always necessary to use the heating element. Use the heating element on cool damp days when the moisture on the

sliding surface slows down the speed of the sliders.

19. TAIL SECTIONS

- a. The tail sections are stored on the left side of the lower storage deck.
- b. Fasten the curved tail section to the lower slide frame with 2 pins. (Fig. 39)

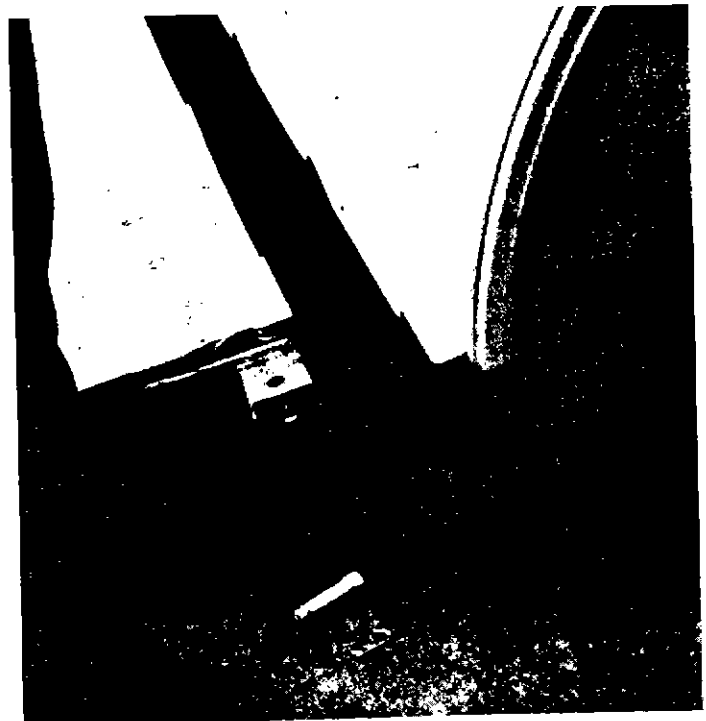


Fig. 39

- c. Align the straight tail section with the curved tail section.
- d. Lift the curved tail section so that the locking sockets can be fitted over the mating locking sockets on the straight tail section. (Fig. 40)



Fig. 40

20. DISASSEMBLE STEPLADDER

- a. Store ladder assembly parts on the side frame of the aluminum steps.
- b. Bolt and pin assembly parts in place. Refer to Fig. 9.

21. LOWER SLIDE STEPS AND HANDRAIL

- Pin the aluminum steps to the ears on the upper slide frame. *Key in place.* Refer to Fig. 1f.
- Remove the handrail from storage and install in the sockets in aluminum steps.

22. LOWER LEVEL LIGHTS

- Install the last 4 light sections on the lower slide frame.
- Tighten set screws.
- Plug in lights.
- Note:* The 2 light sections to be installed on the side of the lower level steps are different from all the other light sections. The ends of the light posts that slide into the support slots are less offset than the other posts. (Fig. 41)

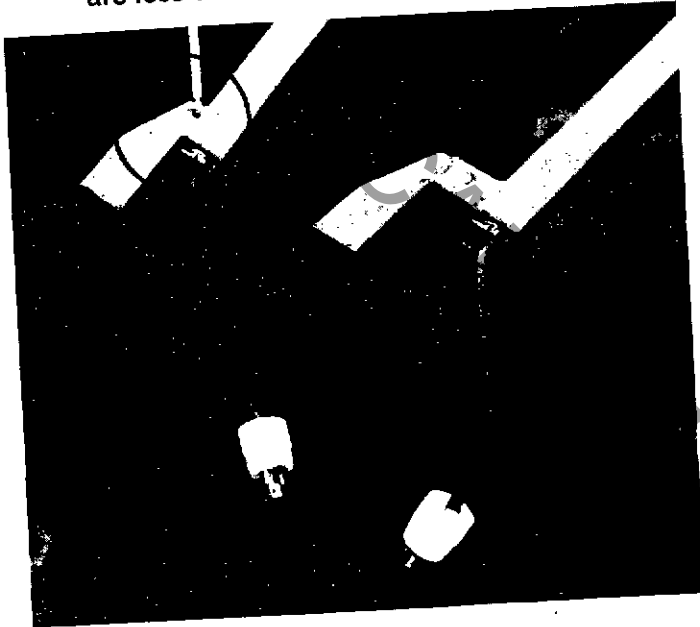


Fig. 41

23. OUTSIDE FENCE

- Unload the 16 outside fence sections from the loading rack on front of the trailer.
- Unload the fence jacks from the slide bag box.
- Set up fence according to sketch. (Sketch 5)

24. TICKET BOOTH

- Slide the 4 sides, the sign and the bottom out of the storage racks.
- Remove the top from the front of the lower storage deck. (Fig. 42a)
- Remove the seat, money box and shelf from the small tray at the front of the lower storage deck. (Fig. 42b)
- Assemble the ticket booth.

25. FINAL DETAILS

- Store the storage bracket and the protective cover for the electric sign in the lower storage deck.
- Replace the lower storage deck turnbuckles and doors.
- Roll out safety rug in front of the tail section.

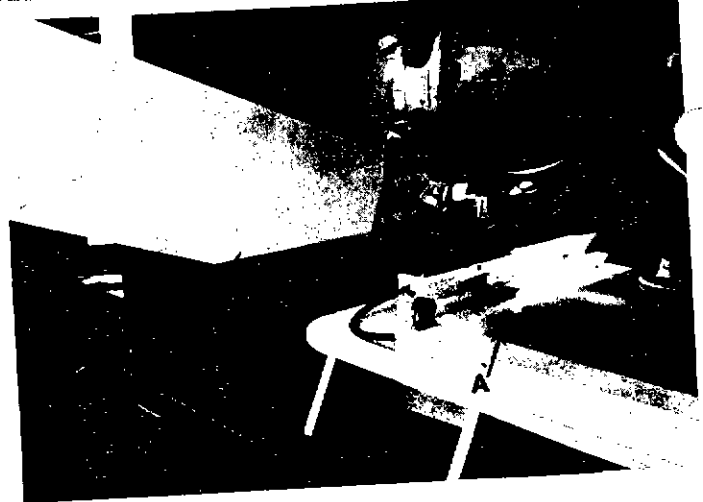


Fig. 42

- Position the slide bag box near the steps.

OPERATION OF THE SLIDE

- A minimum of two operators should operate the Slide.

- One man on top of the Slide.

- Regulate the flow of sliders so that there are no collisions at the bottom of the Slide.
- Make sure that all riders are sitting and positioned properly before sliding.

Note: All sliding should be done in an upright, sitting position, with feet in the mat pocket and hands holding up the sides of the sliding mat.

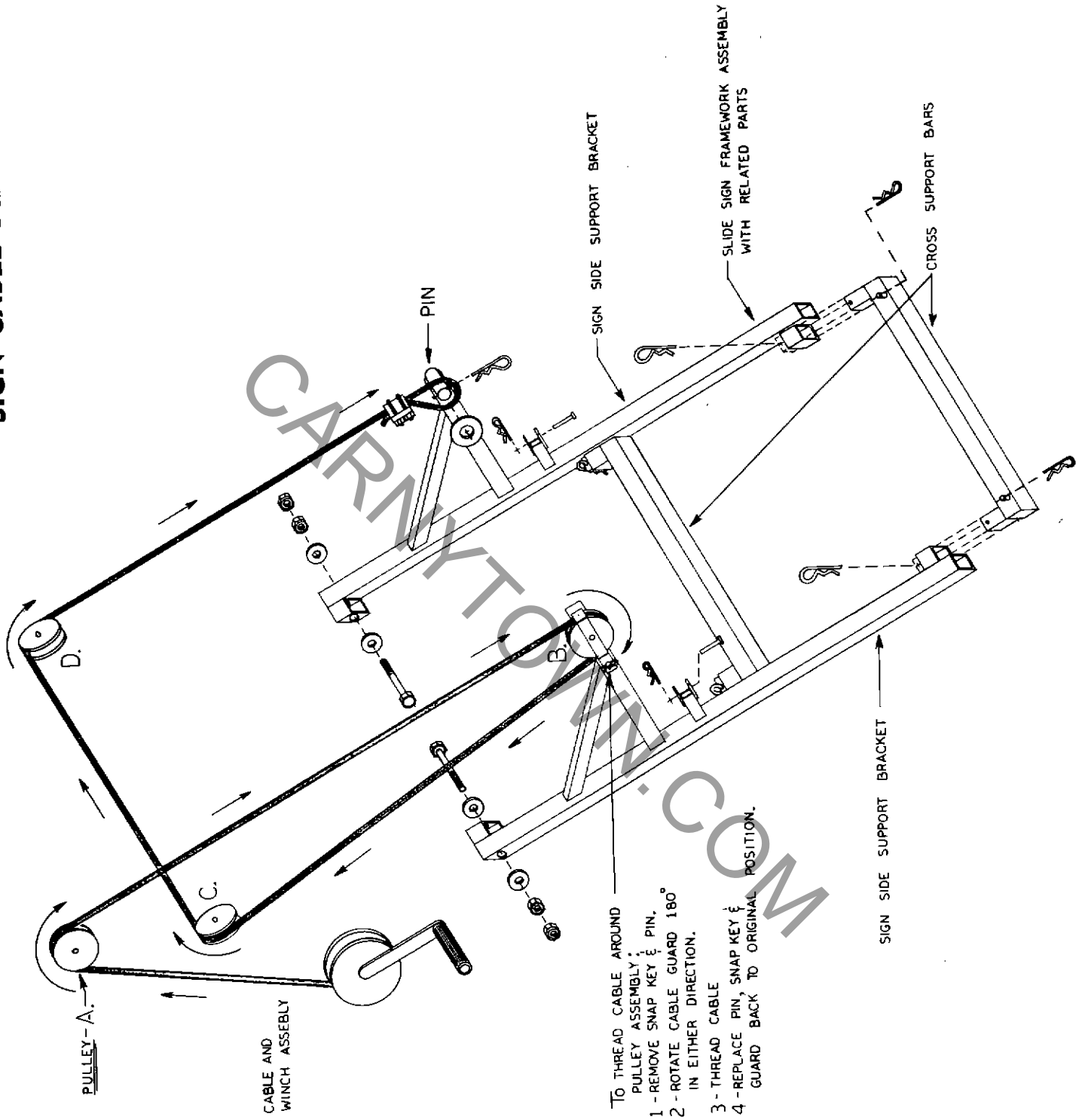
CAUTION: Absolutely no sliding should be done backwards or in a prone or standing position.

- Very small children have a tendency to "fishtail" and should slide with an adult.

- One man at the bottom of the Slide.

- Regulate the traffic up the steps.
- Make sure people use handrails as they climb the steps.
- Assist people to get up after completing their ride.
- Collect the sliding mats.

SIGN CABLE DIAGRAM



- TO THREAD CABLE AROUND PULLEY ASSEMBLY:
- 1 - REMOVE SNAP KEY & PIN.
 - 2 - ROTATE CABLE GUARD 180° IN EITHER DIRECTION.
 - 3 - THREAD CABLE
 - 4 - REPLACE PIN, SNAP KEY & GUARD BACK TO ORIGINAL POSITION.

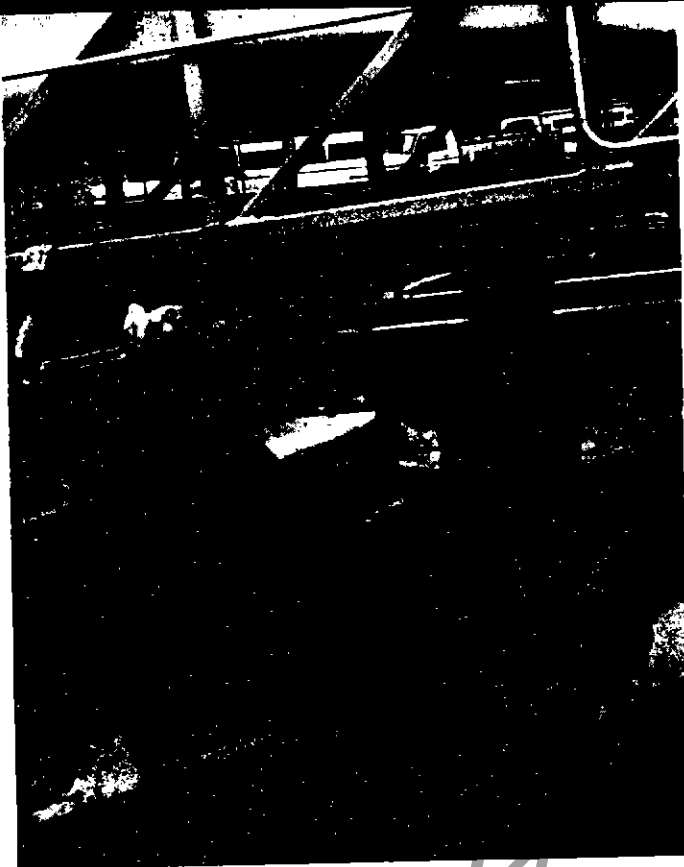


Fig. 32

- h. With the lower slide frame resting on the support carriage crank screws, pull the lower slide section and the support carriage out from the trailer frame.

Note: The front end of the lower slide section must be pulled out to the end of the trailer frame in order to clear the upper slide section.

17. RAISE THE UPPER SLIDE SECTION

- a. Remove the pins that hold the upper slide section in traveling position. (Fig. 33)

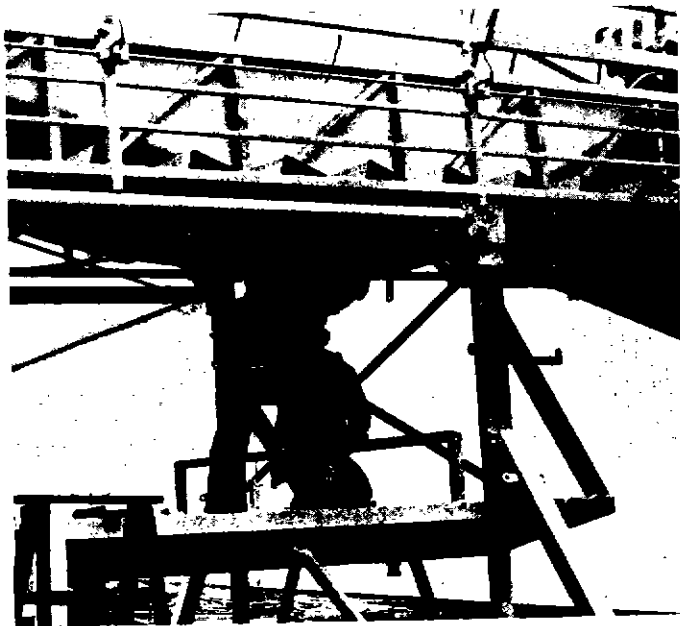


Fig. 33

- b. Remove the pins that hold the support arms against the sides of the upper slide frame. (Fig. 34)

Note: Two men must guide the support arms as they lower from their storage position.



Fig. 34

- c. Turn on the hydraulic system switch. Pull back the control lever to raise the upper slide frame.

- d. *Slowly* raise the upper slide frame. Guide the support arms as they swing forward and hang directly over the standing support brackets. (Fig. 35)



Fig. 35

- e. Using the hydraulic system, adjust the position of the support arms. Line up the holes of the support arms and the ears on the standing support brackets. *Pin and key in place.* (Fig. 36)

Note: Be sure the area is free of obstacles as the upper slide is raised into position.

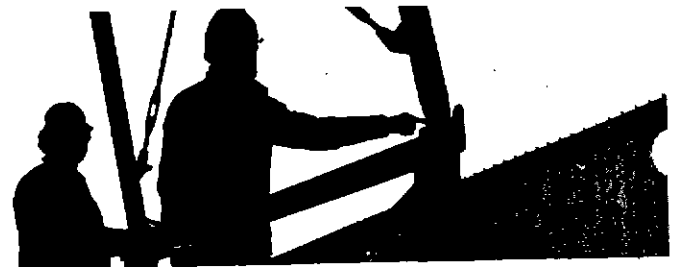


Fig. 36

- a. Unlock the 2 lock hooks on the rear of the trailer. (Fig. 28)



Fig. 28

- b. Pull the support carriage for the lower slide frame partially out. (Fig. 29a)
- c. Unsnap the crank screw handles and screw them partially down so that the tops of the screws are just below the trailer deck level.
- d. Remove the bolts that secure the lower slide frame to the trailer. (Fig. 29b)

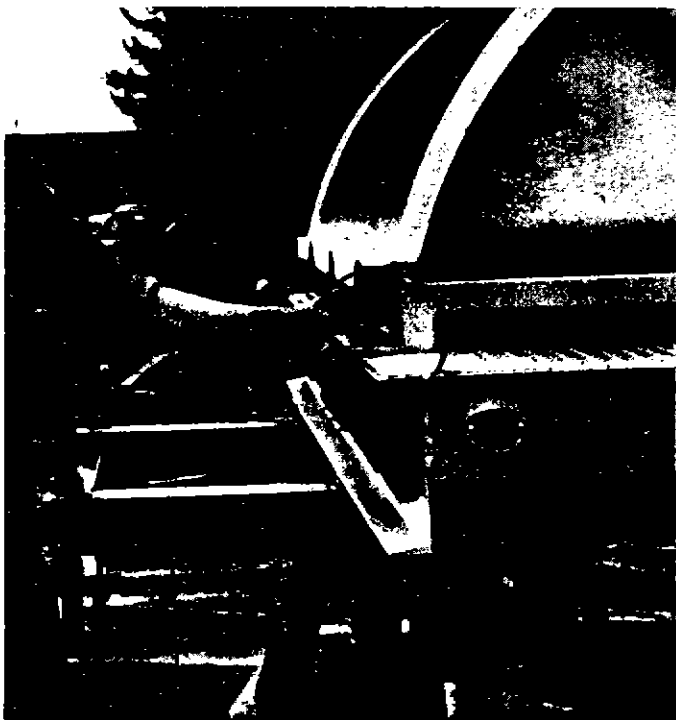


Fig. 29

- e. Pull the end of the lower slide frame onto the rollers on the rear of the trailer. (Fig. 30)

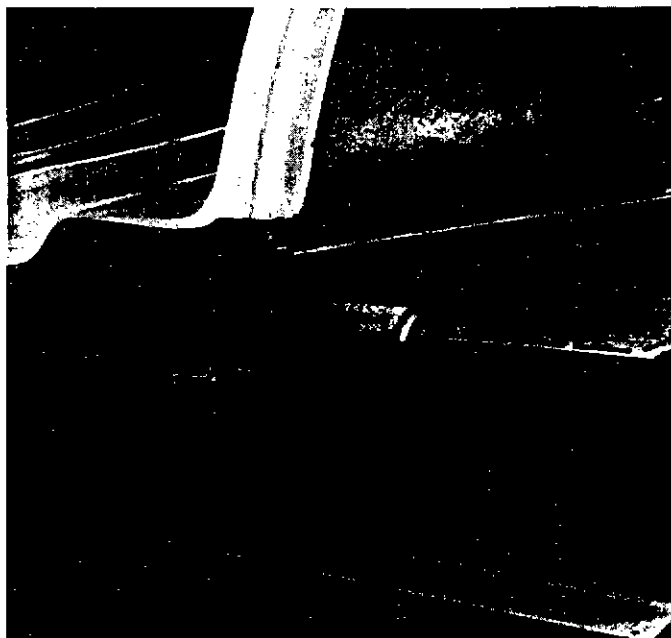


Fig. 30

- f. Use the rollers to help pull the lower slide frame partially out from the rear of the trailer frame.

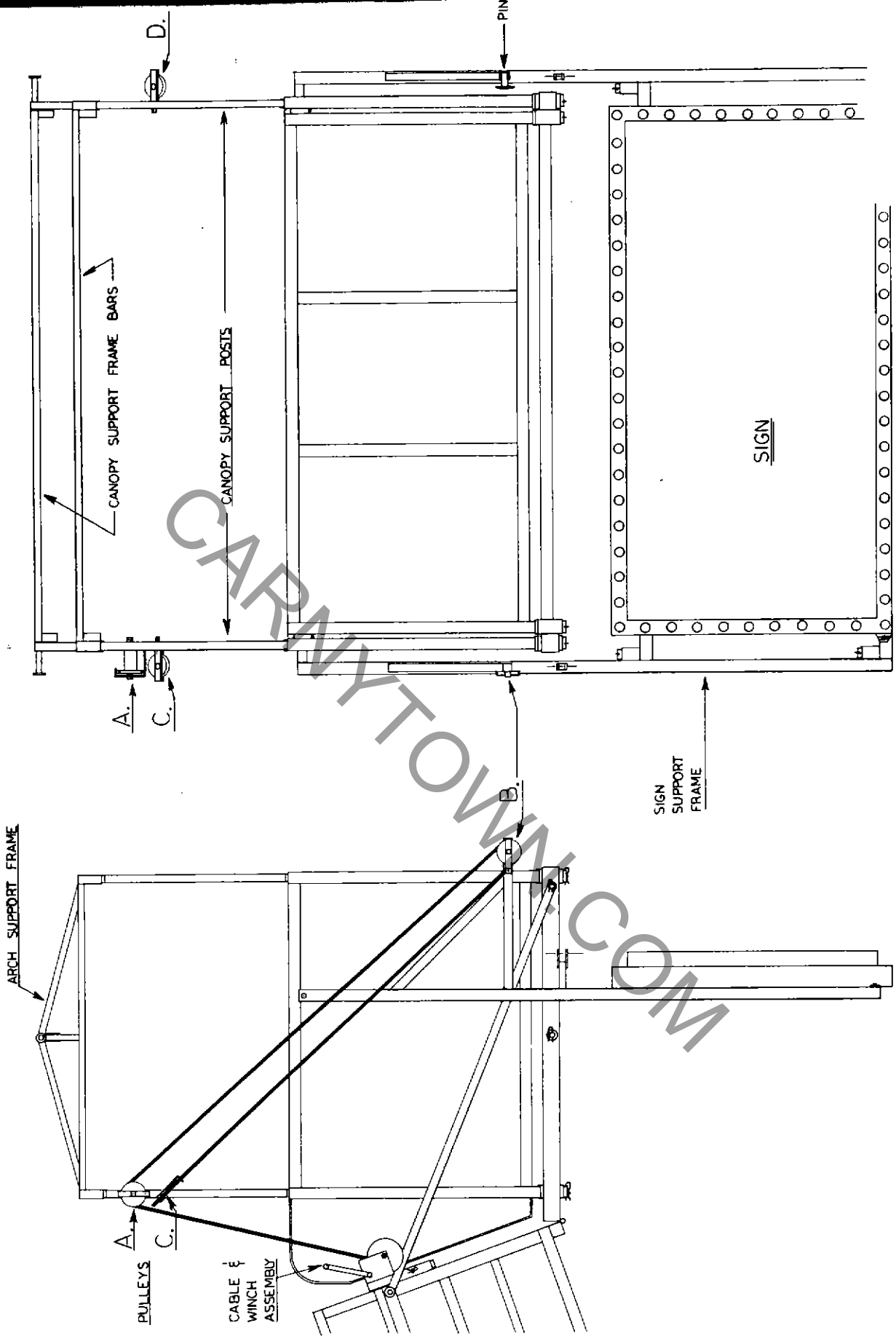
Note: A metal channel strip is located under the lower slide section. It runs across the width of the lower slide frame. The groove in the strip must fit over the tops of the crank screws when the screws are raised. (Fig. 31)



Fig. 31

- g. Raise the crank screws to meet the channel strip. This will support the lower slide frame. (Fig. 32)

SIGN CABLE & CANOPY ASSEMBLY



SEE SHEET - 2 - FOR SIGN MOUNTING DETAILS
AND CABLE DIAGRAM

SKETCH

(1) The arch support frames are stored on the left side of the top storage deck. Refer to Fig. 45 (1).

(2) Install the arch support frames by sliding the leg sockets over the canopy corner support posts on each end. (Fig. 20a) Repeat the other side.

c. Canopy Support Frame Bars

(1) The canopy support frame bars are stored on the left side of the top storage deck. Refer to Fig. 45 (2).

(2) Slide the frame bars into the arch support frame sockets. (Fig. 20b)



Fig. 20

d. The cloth canopy is stored in the slide bag box. Drape the canopy over the canopy frame.

10. STARTING GATES

a. The starting gates are stored in the upper storage box.

b. Working from the upper platform, install the starting gates in the sockets located under the step and the starting deck. (Fig. 21)

CAUTION: Each starting gate must be secured in place with 2 snap keys.

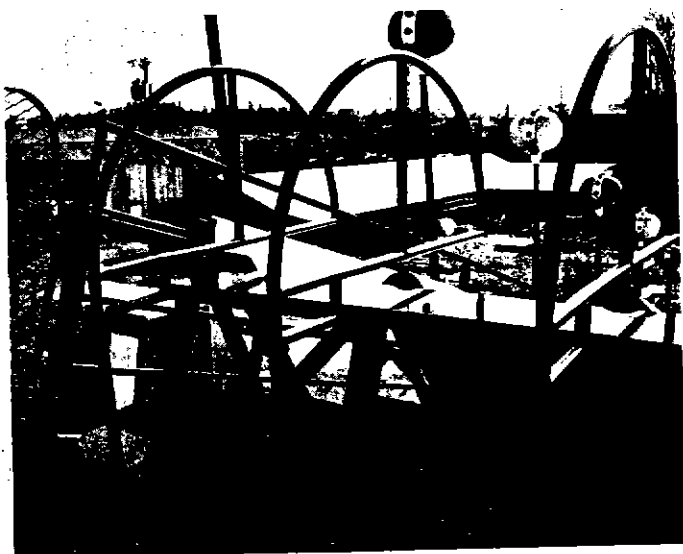


Fig. 21

Remove the slide bag box from the top storage deck and place it near the step entry.

12. ELECTRIC SIGN SUPPORT FRAME

a. Side Support Brackets

(1) The 2 side support brackets are stored on the right side of the top storage deck. Refer to Fig. 44 (1).

(2) Working from the platform, bolt the side support brackets to the top rails of the left and right side fence sections.

(3) Note: The side support bracket with the pulley must be installed on the winch side. (Fig. 22)

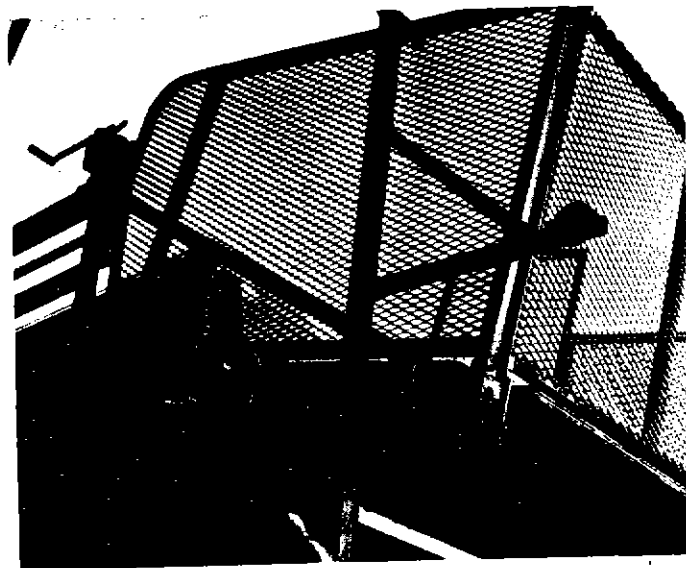


Fig. 22

b. Cross Support Bars

(1) The 2 cross support bars are stored on the right side of the top storage deck. Refer to Fig. 44 (2).

(2) Working from the stepladder, secure the upper cross support bar to the ears located on the side support brackets. Pin in place. (Fig. 23a)

(3) Secure the lower cross support bar to the lower sockets located on the side support brackets. Use snap keys. (Fig. 23b)

Note: The lower cross support bar has 2 pins welded to it.

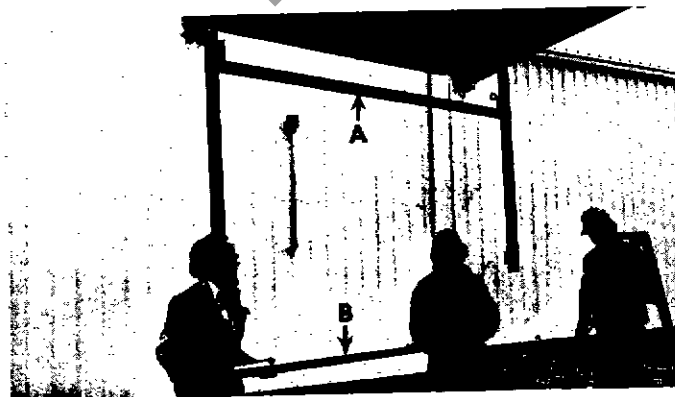


Fig. 23

- c. Remove the cable from the pin on the floor. String the cable for the sign as per sketch. (Sketches 3 and 4)
- d. **CAUTION:** ALL snap keys for the sign support frame must be securely in place before installing the electric sign. The keys support the weight of the sign.

13. INSTALL ELECTRIC SIGN

- a. Remove the protective sign cover and set it aside for later storage.
 - b. Slide the electric sign onto the support frame.
- Note:* The lettering on the sign must be upside down to the installer. (Fig. 24)

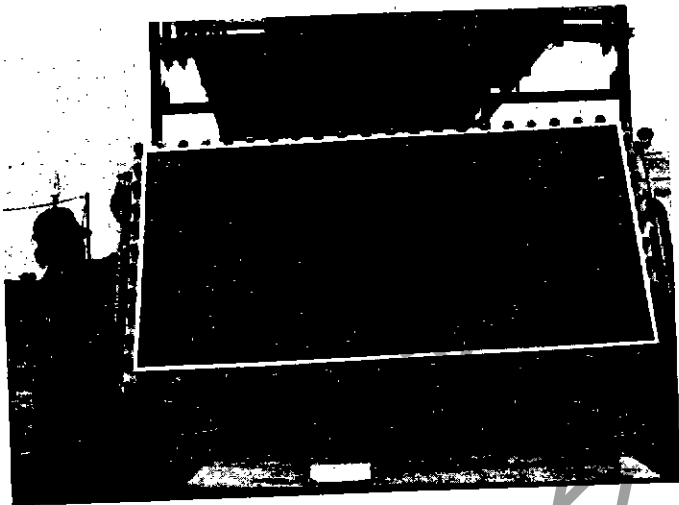


Fig. 24

- (1) Fit the holes in the sign ears over the pins on the bottom cross support bar. *Snap key the pins.*
- (2) Plug in sign to receptacle.
- c. Using the winch, slowly crank the sign up into position. (Fig. 25)

CAUTION: Do not release the tension of the cable while raising the sign.

- (1) Be sure the area is free of obstacles as the sign is raised into position.
- (2) Remember, when the sign is raised parallel to the ground, it extends 10 feet from the end of the top front slide section.

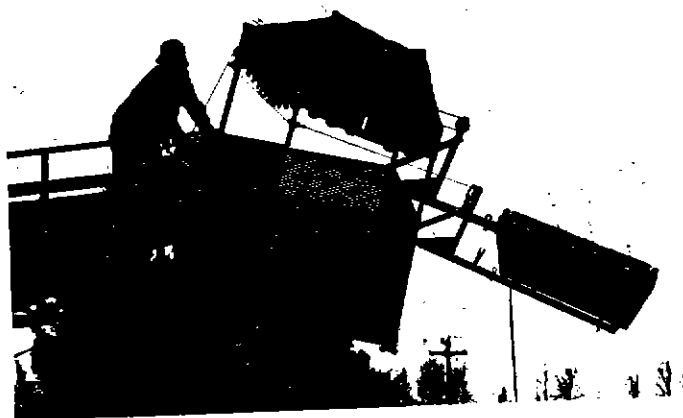


Fig. 25

in the upright position to the safety support frame. Snap key in place. (Fig. 26).

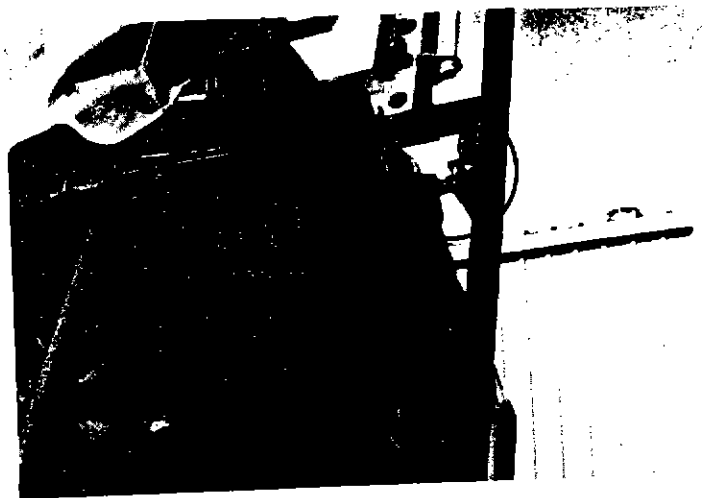


Fig. 26

14. REMOVE WINCH

- a. Unstring the winch cable.
- b. Remove winch and store in upper storage box.

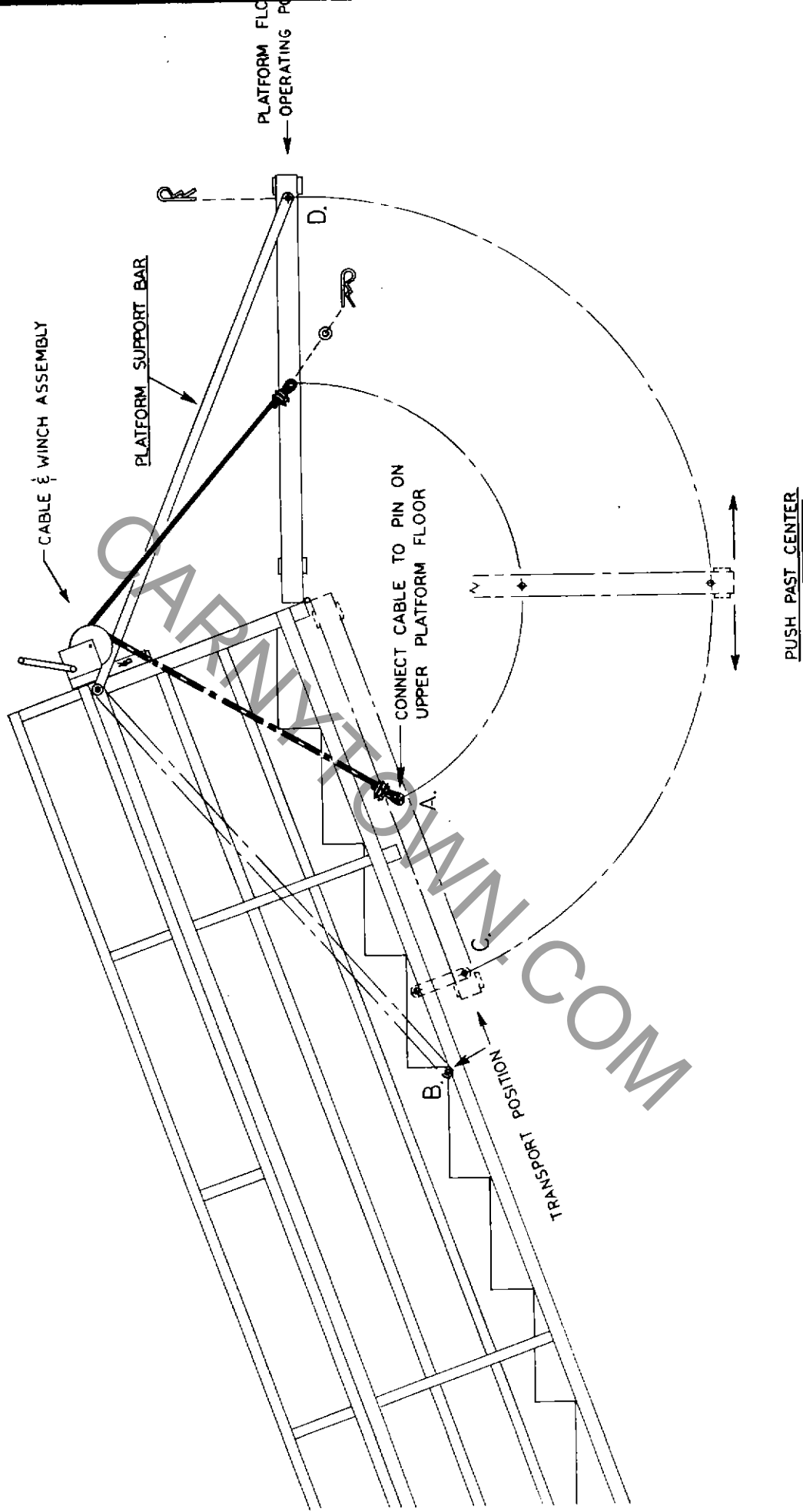
15. LIGHTS—UPPER SLIDE SECTION

- a. Loosen the 20 wing nuts on the storage racks and remove light poles.
- b. *Note:* The last 4 light posts toward the back of the storage area are to be installed *last* on the lower slide section frame. Install these lights *after* the lower slide section and the aluminum steps are in place.
- c. Install the light poles in the sockets located on the outside of the upper slide frame. (Fig. 27a)
- d. Plug in the lights (b) and tighten the set screws (c). (Fig. 27 b and c)



Fig. 27

PLATFORM CABLE DIAGRAM



from its folded position. Allow the platform to hang straight down from the frame.

CAUTION: As the platform is lowered, be sure the cable is on the *outside* of the hanging support bar. (Fig. 16)

- d. Once the platform is hanging straight down, a man working from the ground level must push the platform forward, while the man above reverses the action of the winch and pulls the platform up into position. (Sketch 2)

CAUTION: Be sure the area is free of obstacles as the platform is raised into position.



Fig. 16

- e. Working from the stepladder, secure the left and right support bars to the pins on the sides of the platform floor. *Snap key in place.* (Sketch 2d)

8. UPPER PLATFORM FENCE

- a. Remove the wing nut that secures the large side fence section to the gooseneck deck. Remove the large fence section. Refer to Fig. 45 (6).
- b. The small side fence and the front fence section are stored on the left side of the top storage deck. Refer to Fig. 45 (3) (4).
- c. Hand the fence sections up to the man working on the upper platform.
- d. Install the side fence sections first.
 - (1) The small side section is placed on the winch side.
 - (2) Insert the fence legs into the sockets along the edge of the platform floor.
- e. Hook the front section into the side sections. (Fig. 17)



Fig. 17

- f. Working from the stepladder, *snap key all fence posts in place.* Insert the rear keys first. (Fig. 18)

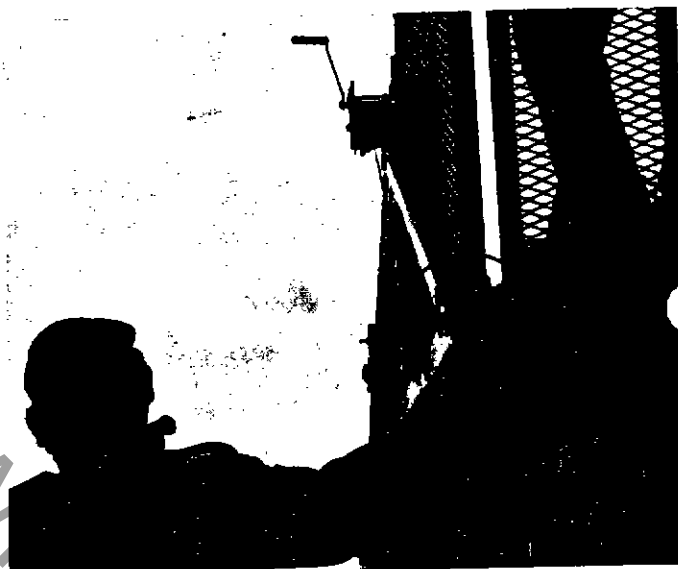


Fig. 18

9. CANOPY FRAME AND CLOTH CANOPY

- a. Canopy Support Posts.
 - (1) The 4 corner canopy support posts are stored in the upper storage box.
 - (2) The post with the double pulley is placed on the winch side.
 - (3) Working from the platform, install the corner support posts in the sockets in the platform fence sections. (Fig. 19)



Fig. 19

hinges and remove the trailer storage area doors. Slide the doors under the trailer for later use.

- f. Connect the main power cable to the power source.
- g. Check the hydraulic pump for the correct rotation. (Indicated by the arrow on the pump.) (Fig. 8)

CAUTION: Just jog the motor switch when checking the hydraulic pump rotation. *Do not* run for any length of time. Damage to the pump could occur if the pump is running in the wrong rotation.

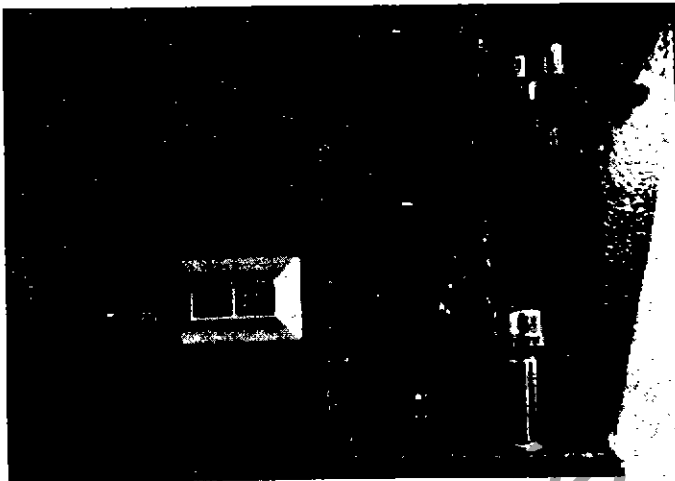


Fig. 8

- h. Remove the turnbuckles that support the trailer storage area and slide them under the trailer for later use.

2. ASSEMBLE LOWER SLIDE STEPS INTO STEPLADDER

NOTE: The lower slide steps can be assembled into a stepladder and used while setting up the ride. The assembly parts are stored on the side frame of the steps. (Fig. 9)

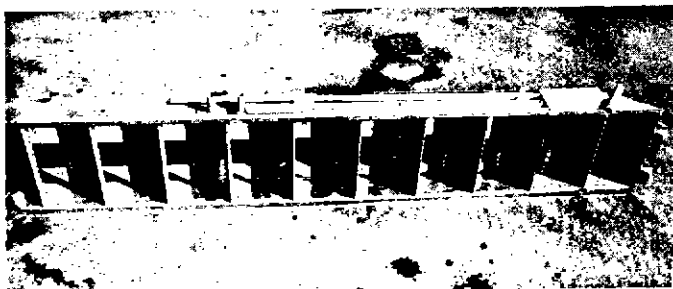


Fig. 9

- a. Remove the snap keys and bolts in order to remove the 2 legs, 2 support bars and 2 braces from the steps frame.
- b. Slide the 2 leg stands out from the steps frame.
- c. Insert the legs in the sockets at the top of the steps. Insert the legs in the leg stands.
- d. Stand the ladder upright.
- e. Secure one end of a support bar to the ear on the leg and the other end to the inside of the

step.) *Pin and key in place.* Repeat other side.

- f. Secure 2 braces between the 2 legs to form an "X". Pin and snap key the braces to legs. Pin and key the braces together at the cross point of the "X". (Fig. 10)



Fig. 10

3. UNLOAD ELECTRIC SIGN

- a. Unload electric sign from the gooseneck deck and set it aside for later assembly.
- b. Remove the rear cross bracket, on which the sign was stored, from the sockets on the gooseneck deck. Set it aside with the sign.

4. SCREW JACKSTANDS, JACKSTAND BRACES, OUTRIGGERS, TURNBUCKLES

- a. Remove the pins that secure the left and right screw jackstands against the sides of the trailer frame. (Fig. 11) Allow the jackstands to hang down from the trailer frame. (Fig. 12)



Fig. 11



Fig. 12

b. Install jackstand braces.

(1) The 4 jackstand braces (2 short, 2 long) are pinned to the storage ears on the left and right outriggers. (Fig. 13)

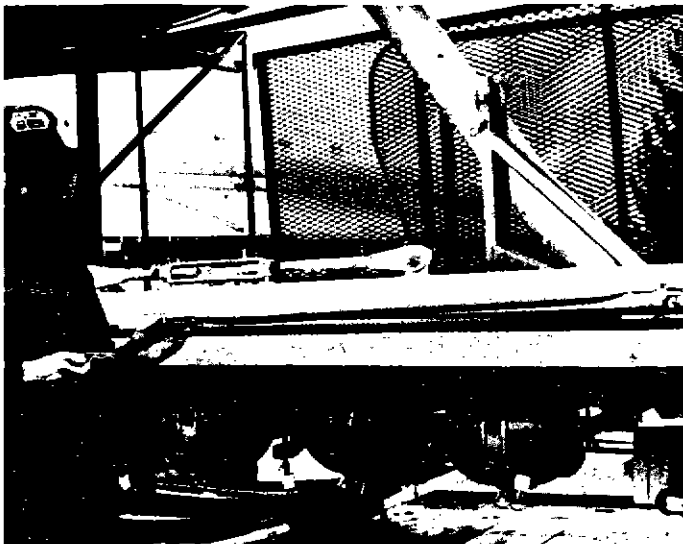


Fig. 13

(2) Using the same storage pins, secure one end of the long brace to the lower outside ear of the jackstand. Swing the other end back and up, and pin it to the trailer frame ear. *Snap key in place.* (Fig. 14a)

(3) Pin one end of the short brace to the lower inside ear of the jackstand. Swing the other end in and up, and pin it to the trailer frame ear. *Snap key in place.* (Fig. 14b)

CAUTION: Be sure to snap key all pins.

- c. Unscrew the jackstand feet on some blocks until some load has been applied to the jackstands. (Fig. 14c)
- d. The outriggers are stored on the left and right sides of the top storage deck.
- e. Using the same pin that holds the outrigger to the loading bracket, pin the top of the outrigger to the ear of the standing support bracket above the jackstand. *Snap key in place.* (Fig. 14d)
- f. With the base of the outrigger resting on a block, remove the top pin that holds the turnbuckle to the outrigger. Swing the turnbuckle down. *Pin and key* the turnbuckle to the ear on the lower outside of the jackstand. (Fig. 14e)

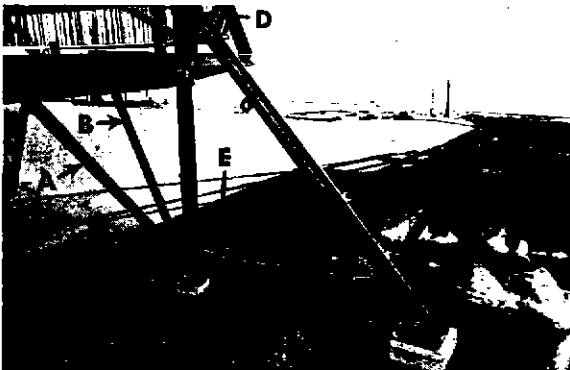


Fig. 14

6

g. Tighten the turnbuckle to increase the pressure on the base of the outrigger. Repeat other side.

5. UPPER SLIDE HANDRAILS

- a. Unfold the handrail sections along the side of the upper slide frame to an upright position. (Refer to Fig. 1e)
- b. Secure the handrail sections in place with 10 ($\frac{3}{8}$ " x $\frac{3}{4}$ ") bolts. *Note:* The bolts are stored in the tool box.

6. WINCH

- a. Working from the top of the forward section of the upper slide frame, remove the winch from the upper storage box. *Note:* The upper storage box is located under the front of the top slide section. (Refer to Fig. 2a)
- b. Install the winch to the winch-support assembly socket which is located on the top forward handrail support post. *Pin in place.* (Fig. 15)



Fig. 15

- c. Working from the stepladder, connect the cable to the pin located on the side of the upper platform floor. (Sketch 2a)

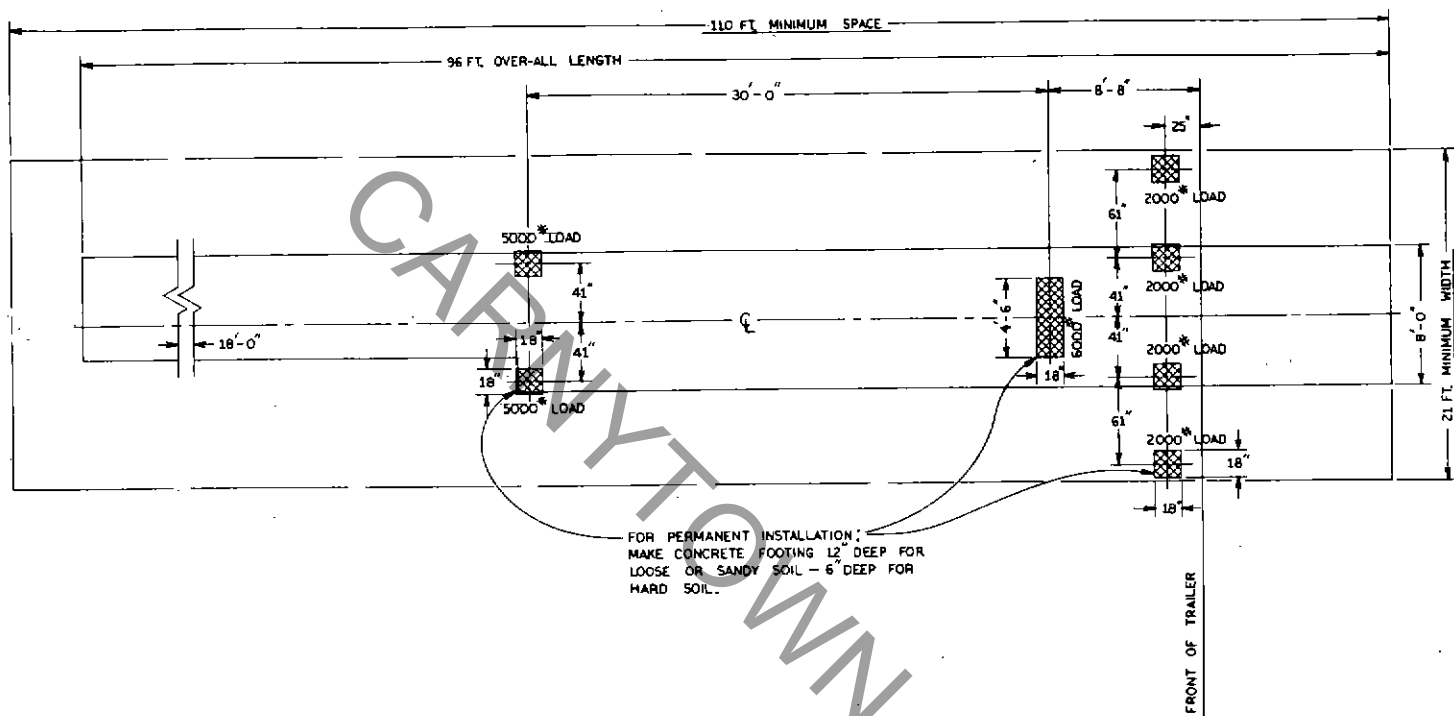
CAUTION: Be sure to install a washer and a snap key to secure the cable to the platform pin. These securing devices hold the weight of the platform floor as it is raised into position.

- d. Tighten the cable tension slightly with the winch.

7. UPPER PLATFORM AND PLATFORM SUPPORT BARS

- a. Working from the stepladder, remove the platform support bars from the two side pins on the main slide frame. (Sketch 2b) Allow the bars to hang down from the frame.
- b. Working from the stepladder, remove the snap keys and bars from the pins that secure the upper platform in its folded position under the slide frame. (Sketch 2c)
- c. Using the winch, *slowly* lower the platform

SPACE & FOUNDATION DIAGRAM FOR PORTABLE SLIDE



SKETCH 1

DESCRIPTION OF THE AREA NEEDED TO SET UP THE SLIDE

1. The front of the Slide must have at least 10 feet clearance from any obstruction. When the electric sign is pulled up to operating position, it passes a parallel position to the ground. At this point, the sign extends 10 feet from the end of the top front Slide section.
2. When the Slide is in operating position, people on the Slide should not be able to reach out and touch trees, buildings, light or telephone poles, signs or power lines.
3. The surface on which the ride is set up must be hard enough so that no settling of the Slide will occur.
4. The surface on which the ride is set up must be level so that the Slide can be properly leveled.

SLIDE SET-UP

The Slide can easily be set up in 2 hours by 3 men.

All the equipment that is needed to set up the Slide can be found in the tool box, slide bag box, upper storage box or on the assembly parts.

The Slide is provided with a 6' x 10' safety mat which is to be placed at the end of the sliding surface when in operation.

1. PREPARE TRAILER TO UNLOAD

- a. Crank front landing gears down (Fig. 3)

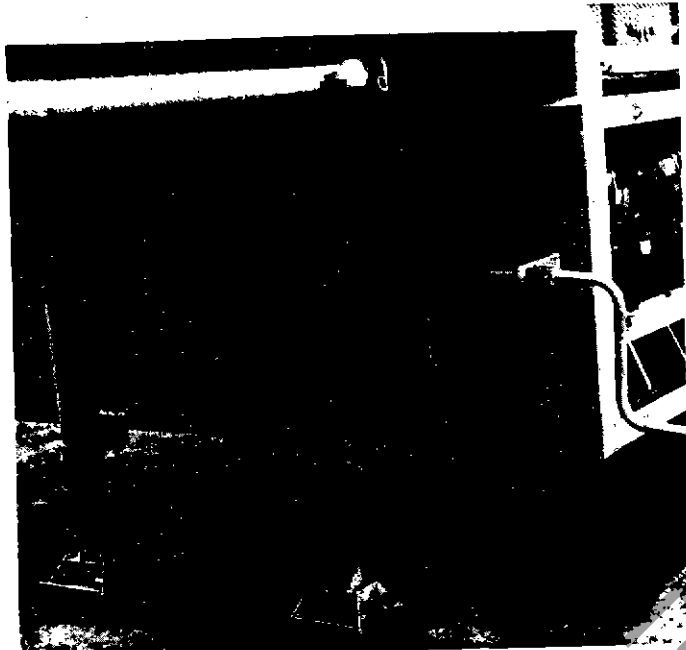


Fig. 3

- b. Remove tractor from trailer.
- c. Lower rear landing gears to the ground. (Fig. 4)

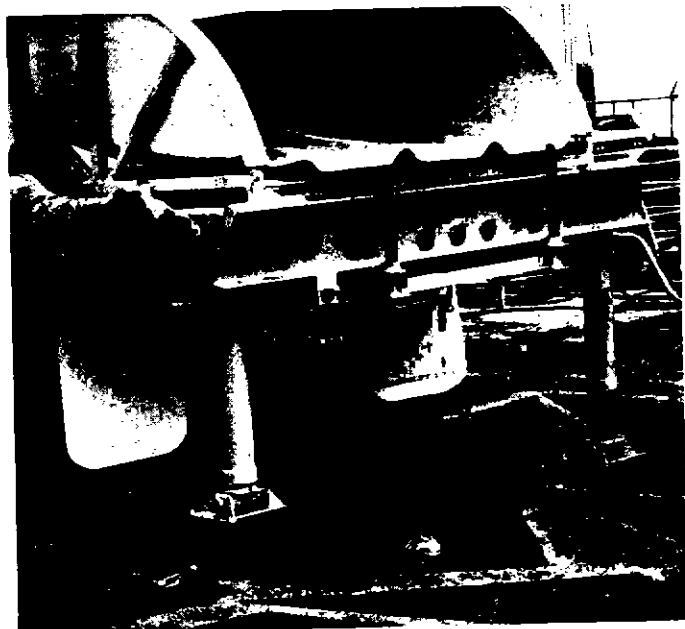


Fig. 4

- d. Level the trailer side to side, at both front (5) and rear (6) and along the length (7). (Figs. 5, 6, 7)

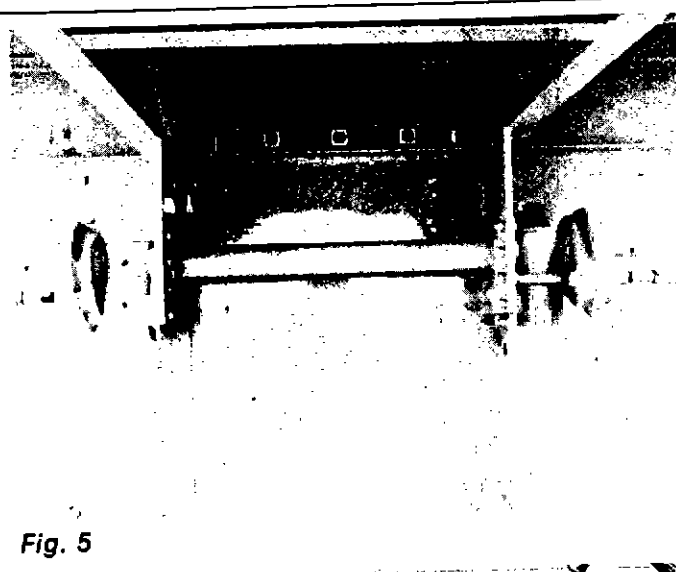


Fig. 5

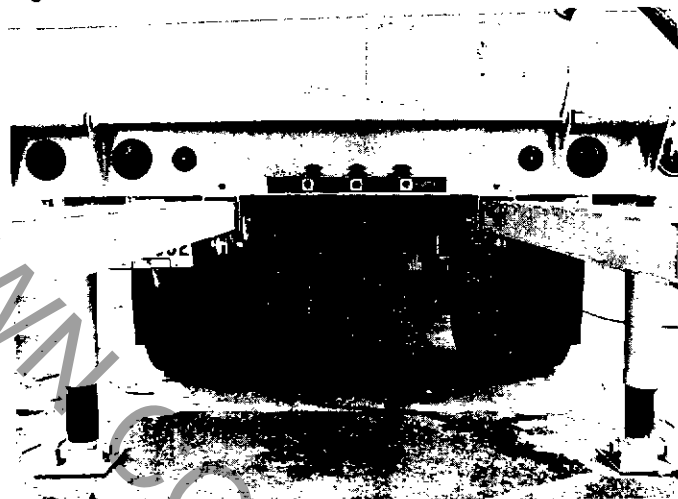


Fig. 6

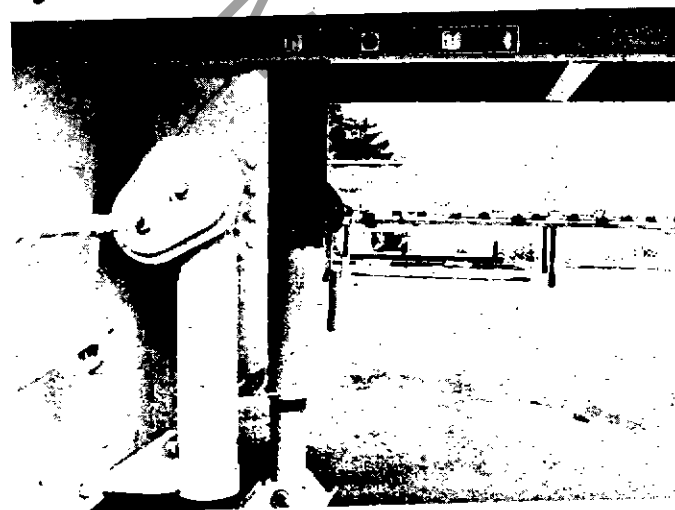


Fig. 7

SPECIFICATIONS

CAPACITY	750 customers per hour
LIGHTING FOR THE SLIDE AND THE ELECTRIC SIGN	200 - 11 watt bulbs, 20 - 60 watt bulbs, 4 - 40 watt fluorescent tubes 20 plastic bubble light fixtures. Each is ringed with 10 exterior lights and each has a flashing interior light. Electric sign has chasing incandescent bulbs and 6 fluorescent interior tubes.
TOTAL POWER REQUIRED	16 KW
SET-UP & TAKE-DOWN TIME	2 hours with 3 men
MAXIMUM HEIGHT	35 feet
MINIMUM WIDTH WITHOUT FENCE	8 feet
MINIMUM WIDTH WITH FENCE	21 feet
SLIDING LENGTH	100 feet
TOTAL SPACE REQUIRED TO SET-UP, INCLUDING FENCE AREA	35 x 21 x 120 feet
LENGTH OF TRAILER	40 feet
GROSS WEIGHT OF TRAILER	22,000 pounds

POWER SUPPLY REQUIREMENTS

1. The maximum power needed for the sign and the Slide heaters is 16 KW.
2. The Slide requires 220V single phase *with ground*.

CAUTION: Failure to supply an adequate ground to the frame can cause serious electric shock hazard. Proper grounding prevents the metal parts of the Slide from being energized (to high voltage) in the event of a short circuit. The lead supplied with the Slide contains a ground wire that may be connected to ground at the power supply. Another means of grounding is with a ground rod. Check local regulations for ground rod requirements and specifications.

GENERAL DESCRIPTION OF THE SLIDE



Fig. 1

- | | | |
|-----------------------------|---------------------|----------------------|
| a. standing support bracket | c. support carriage | e. handrail |
| b. upper platform | d. tail sections | f. lower slide steps |

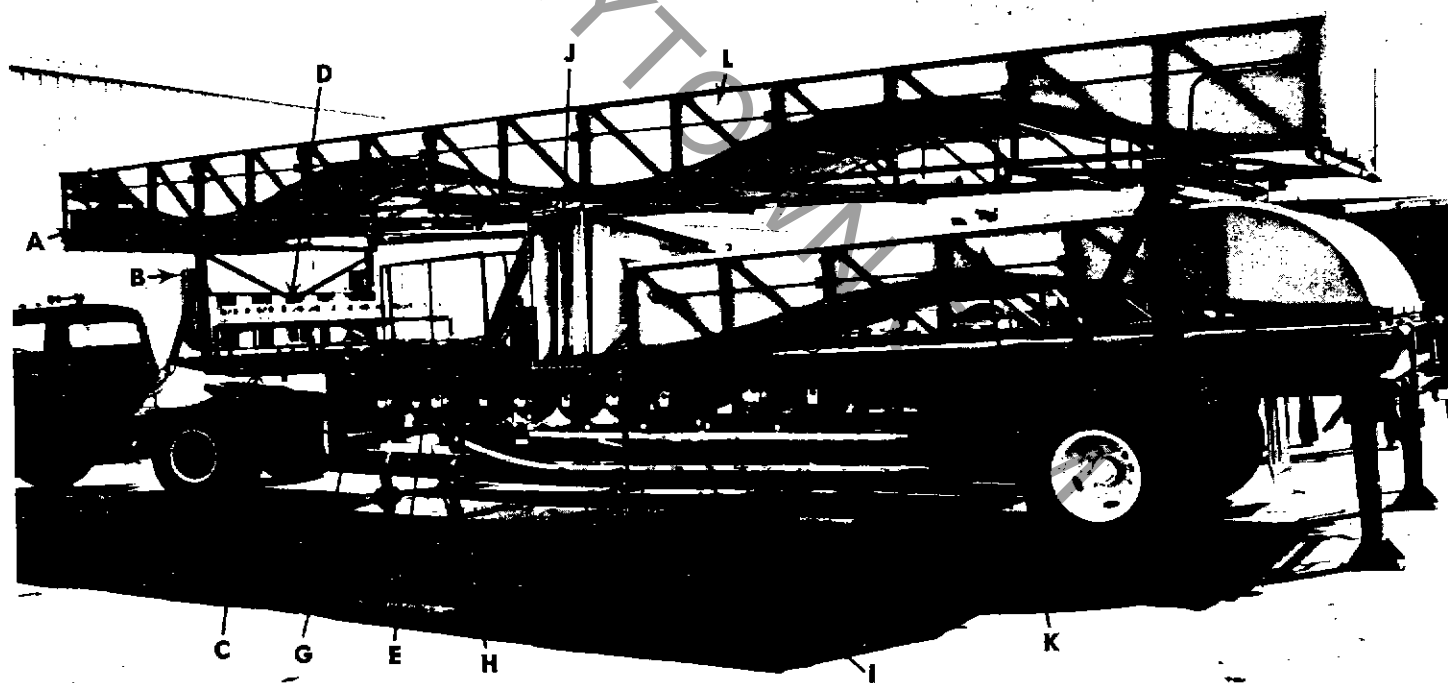


Fig. 2

- | | |
|---|---------------------------------------|
| a. upper storage box | f. lower storage deck |
| b. outside fence sections | g. ticket booth sign, seat, money box |
| c. gooseneck deck | h. ticket booth roof |
| d. electric sign | i. tail sections |
| e. top storage deck (Refer to Fig. 41 for further storage information.) | j. ticket booth side sections |
| | k. lower slide section |
| | l. upper slide section |

TABLE OF CONTENTS

INTRODUCTION AND WARRANTY	I
TABLE OF CONTENTS	II
GENERAL DESCRIPTION OF THE SLIDE	1
SPECIFICATIONS	2
POWER SUPPLY REQUIREMENTS	2
SPACE & FOUNDATION DIAGRAM FOR PORTABLE SLIDE	3
DESCRIPTION OF THE AREA NEEDED TO SET UP THE SLIDE	3
ASSEMBLY INSTRUCTIONS	4-16
PLATFORM CABLE DIAGRAM	7
SIGN CABLE & CANOPY ASSEMBLY	12
SIGN CABLE DIAGRAM	13
OPERATION INSTRUCTIONS	16
FENCE LAYOUT DIAGRAM	17
SLIDE RELOADING AND ASSEMBLE PART STORAGE	18-19
GENERAL MAINTENANCE	20
MAINTENANCE CHECK LIST	20
TROUBLESHOOTING GUIDE-ELECTRICAL SYSTEM	21
TROUBLESHOOTING GUIDE-HYDRAULIC SYSTEM	22
INFORMATION REQUIRED FOR SERVICE PARTS ORDERS	23
PARTS LIST	24-33

INTRODUCTION

This manual is intended to be used as a general guide for the operation and maintenance of the Super Slide. Kilinski Manufacturing Co. is constantly striving to improve performance, efficiency and safety; therefore, certain improvements may not be reflected in the text of the manual. Any major revisions or additions to the manual will be sent to you free of charge. Specially engineered features purchased for individual rides may not be incorporated in the manual.

WARRANTY

Kilinski Manufacturing Co. does hereby warranty all parts and materials which are manufactured by us against failure under normal use and service for a period of one hundred eighty (180) days after the date of sale. Under these conditions, all such parts and materials will be invoiced to the customer upon shipment by us of required replacement parts. Full credit will be allowed on such parts subject to the following conditions:

- (A) If they are returned to us, freight PREPAID, within a period fifteen (15) days after date of invoice.
- (B) After our examination of said parts they prove to our satisfaction that such defects did exist. This is our sole obligation under this warranty.

On parts which are purchased and not manufactured by Kilinski Manufacturing Co., the original manufacturer's warranty will apply. However, the same policy as above does exist if replacements are ordered and shipped by us.

It is our desire to serve our customers promptly and efficiently; however, the laxity of some of our customers in returning warranty parts has brought about this policy which must be adhered to unless other arrangements are made in writing with an official of our Company.

SET UP PROCEDURE

1. Level trailer in all directions by landing gears on all four corners.
2. Place front jacks supports and tighten.
3. Un pin rear scenery and fold out.
4. Lower rear lower landing and level.
5. Place rear top landing support poles in top landing and raise and pin.
6. Raise lower landing handrail and pin.
7. Unfold lower scenery.
8. Place steps in position.
9. Hook 18" punching bags to top of upper floor.
10. Raise rear tower scenery, rear handrails and light tower.
11. Raise end hand rail and right handrail.
12. Place rear corner light pole in position.
13. Use pole provided to raise rear top scenery.
14. Raise front tower scenery, front tower handrails, front light tower and open front scenery.
15. Fasten cable to front top landing, using sheaves provided. Un pin and raise 1/3 of distance, fasten support poles to corners of floor. Continue to raise floor until support poles pins to trailer. (Keep front scenery pushed out of way)
16. Disconnect cable.
17. Raise front end handrail, right handrail, and install front corner pole.
18. Using pole provided raise front window scenery.
19. Lower front bottom scenery.
20. Remove scallops (signs) and place the MANIA sign in place first.

cont'd

21. Place quartz lights in light holders.
22. Place flags in flag holders.
23. Adjust turnbuckles on nets.
24. Remove lower slide parts.
25. Hook cable to top of slide, pull into place and position.
26. Close slide safety gate.
27. Un pin ball crawl, pull out and pin, open and pin ball crawl nets and fasten.
28. Raise end of long section of slide with jack screw about 1".
29. Slip no. 2 section into upper section of slide and pin.

Notice: Fiberglas must be handled with care and little or no pressure put on joints or it will break or crack.
(Handle with Care)

30. Slide no 3 piece into position and pin.
31. Place fence and step hand rails in position and secure.

TEARING DOWN

REVERSE ORDER OF GOING UP.

con't-

SAFETY PRECAUTIONS

- 1.. DO NOT LUBRICATE SLIDE.
LUBRICATION OF ANY KIND (ex.) SILICONE,
WAX, WILL CAUSE INJURY TO RIDERS.
- 2.. INSPECT ALL NETS DAILY BEFORE OPERATION RIDE.
NETS MUST BE FASTENED AND SECURED.
CHECK FOR CUTS AND BREAKS.
- 3.. FLOORS, GUARDS, HANDRAILS HAVE FASTENERS
AND PINS. NEVER OPERATE UNLESS ALL ARE
IN PROPER PLACE.
- 4.. CHECK TURNBUKLES DAILY AND KEEP TIGHT.

COPYRIGHT TOWN.COM

PARTS LIST

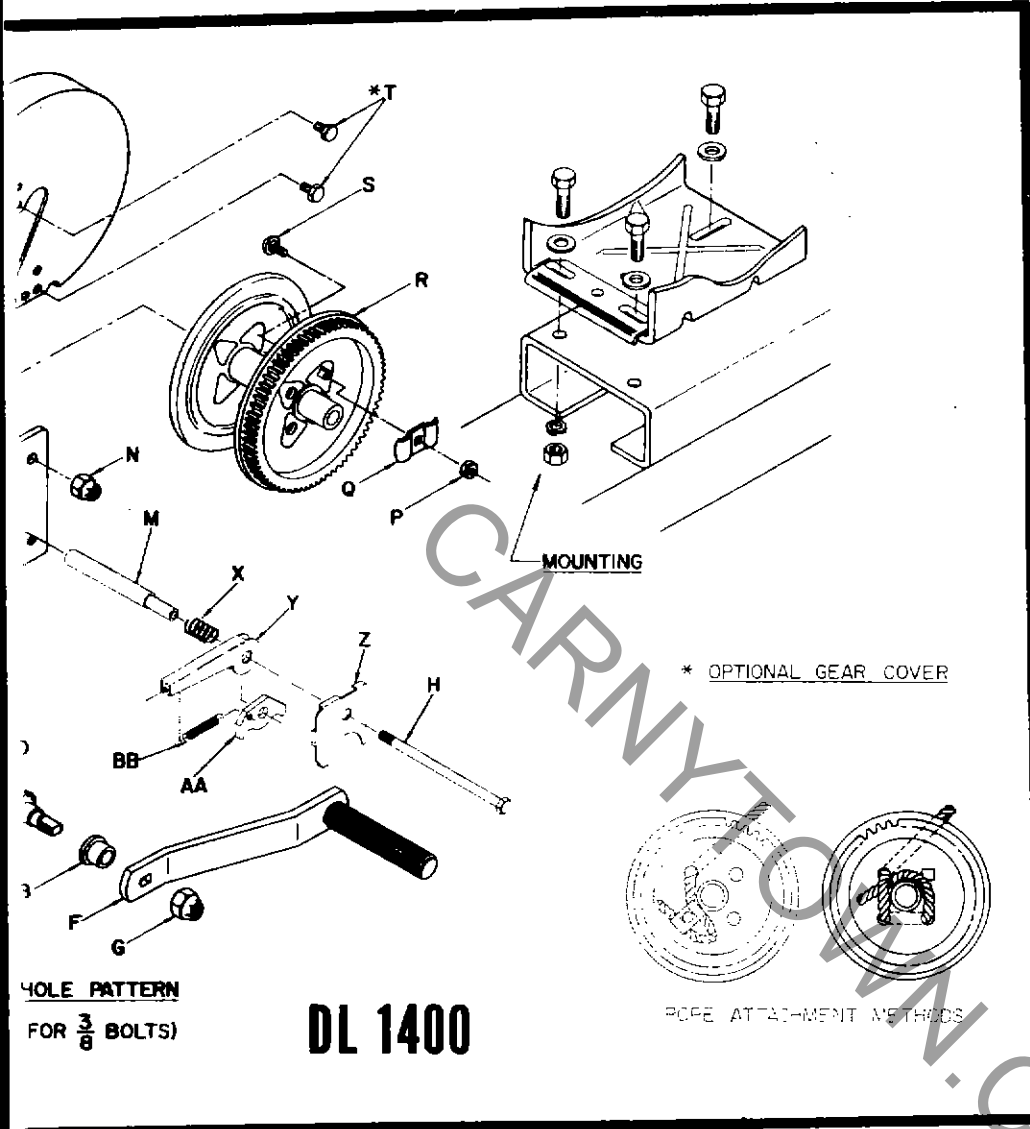
INFORMATION REQUIRED FOR SERVICE PARTS ORDERS

1. Ride serial number.
2. Kilinski Mfg. Company part number. (See following lists)
3. Description of part.
4. Quantity desired.
5. Shipping address and mode of shipping desired.

CHRYSLERTOWN.COM

DL 1400 WINCH

ILLUSTRATION/SPECS/ PARTS/OPERATION



Ref. Let.	Description	Part No.
A	Winch Base	304100
B	Shaft Bushing (2)	204009
C	E-Ring	205116
D	Drive Shaft	304120
F	Winch Handle	304016
G	Handle Nut	205015
H	Ratchet Bolt	205005
M	Ratchet Sleeve	404128
N	Locknut	205155
P	Hex Nut	205016
Q	Rope Clamp	404043
R	Winch Reel	304112
S	Carriage Bolt	205017
*T	Screws (optional)	205018
*U	Gear Cover (optional)	404131
V	Reel Shaft	205008
W	Locknut	205014
X	Compression Spring	204246
Y	Ratchet Lever	404125
Z	Latch Plate	404124
AA	Ratchet Pawl	404126
BB	Extension Spring	204247

**HANDLE AND NUT
MUST BE TIGHTENED
AGAINST DRIVE
SHAFT SHOULDER
BEFORE OPERATING
WINCH.**

IDENTIFICATIONS

This winch. Frame is one-piece design with bearings, double-action ratchet, plastic gear construction, welded reel. Baked enamel finish. Ratchet, 5.5:1 gear ratio. Load capacity—3/8" dia. rope, 41 ft.; 3/16" dia.

LUBRICATION

This winch has been fully lubricated at the factory, but for continued smooth performance and increased life, occasional greasing of gears and reel shafts and an occasional drop of oil on drive shaft bearings is recommended.

MOUNTING

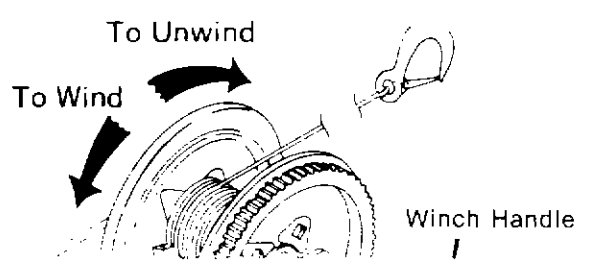
For safety, this winch should be mounted on a solid surface, and lock washers as shown in the diagram.

NOTE

The winch finish can be protected and will provide longer service if it is periodically washed with water and then wiped with light oil or wax.

OPERATING INSTRUCTIONS

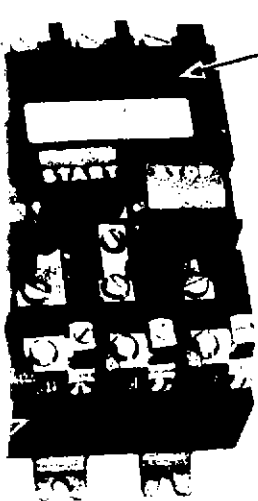
To wind the reel drum by turning winch handle in clockwise direction to "up" position. Place ratchet lever in "up" position to lock. To "reel out" cable or rope turn winch handle in counter-clockwise direction with ratchet lever in "neutral" position. Again, place ratchet lever in "up" position to lock. **Important: Do not place ratchet lever in "up," or "neutral" position to stop operation of winch while winch is "reeling out" or "reeling in." Ratchet lever should always be placed in "up," or locked, position when winch is in use.**



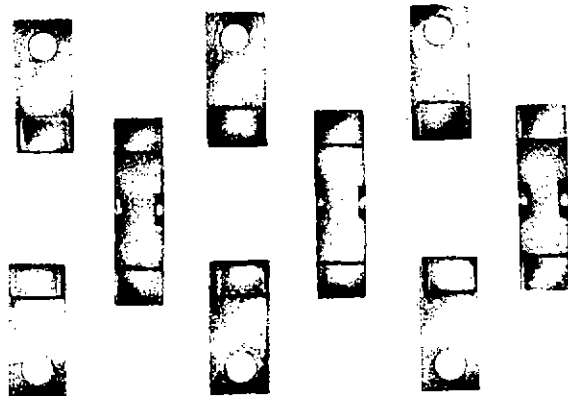
Do not exceed winch load! Excess load may cause premature failure.

INSTRUCTION BULLETIN

SS C20 A.C. MANUAL STARTERS — NEMA SIZE M-0, 1, & 1P.



COVER



CONTACT REPLACEMENT KIT

RENEWAL PARTS

	NEMA SIZE M-0	NEMA SIZE M-1 & 1P
TER CAP	G213CM	G213CM
CONTACT KIT (3 POLE SET)	G203BM	G203CM

portions of all contacts are now visible.

Slide out movable contacts. Loosen stationary contact screws and lift out contacts. Replace in reverse order. SCREWS MUST BE TIGHTENED AND COVER MUST BE IN PLACE BEFORE STARTER IS

tested and inspected prior to shipment from the factory. Under normal operating conditions the only maintenance is to keep parts free from excessive amounts of dirt, oil or grease. Terminals should be checked for tightness. If some worn or pitted more than half way through, they should be replaced. Silver cadmium oxide contacts on contact, even though badly oxidized, will still be a good conductor.

DOUGL →

DOUGL →
DOUGL →

AREA & BRANCH SALES OFFICES

GEORGIA
ATLANTA
404 481-7621
IDAHO
BOISE
208 336-4020
ILLINOIS
CHICAGO
312 692-4140
PEORIA
309 688-8729
INDIANA
EVANSVILLE
000 000-0000
FORT WAYNE
219 485-1831
INDIANAPOLIS
317 842-0500
IOWA
DAVENPORT
319 388-4480
DES MOINES
515 964-3348
KANSAS
WICHITA
316 691-1781
KENTUCKY
LOUISVILLE
502 459-4998
LOUISIANA
BATON ROUGE
504 387-1862
NEW ORLEANS
504 834-2788
SHREVEPORT
318 222-4757
MARYLAND
BALTIMORE
301 433-5050
MASSACHUSETTS
ANDOVER
617 475-1558
BOSTON
617 648-4050
SPRINGFIELD
413 568-8449

MICHIGAN
DETROIT
313 589-4200
GRAND RAPIDS
616 247-7811
LANSING
517 337-1791
MINNESOTA
MINNEAPOLIS
612 544-2701
MISSISSIPPI
JACKSON
601 982-2274
MISSOURI
KANSAS CITY
913 384-4700
ST. LOUIS
314 726-2121
NEBRASKA
OMAHA
402 397-1940
NEW MEXICO
ALBUQUERQUE
505 294-5367
NEW YORK
ALBANY
518 851-8338
BUFFALO
716 631-5454
LONG ISLAND
516 484-8910
NEW YORK
201 473-3242
212 766-1400
ROCHESTER
716 631-5454
SYRACUSE
315 455-5881
NORTH CAROLINA
CHARLOTTE
704 372-9540
GREENSBORO
919 274-2808
RALEIGH
919 782-3339

NORTH CAROLINA
FARGO
701 283-7700
OHIO
AKRON
216 264-2800
CINCINNATI
513 631-7878
CLEVELAND
216 631-8870
COLUMBUS
614 488-1188
DAYTON
513 298-0217
TOLEDO
419 868-8833
OKLAHOMA
OKLAHOMA CITY
405 235-6831
TULSA
918 743-4081
OREGON
EUGENE
503 343-8413
PORTLAND
503 297-5701
PENNSYLVANIA
ALLENTOWN
215 758-8981
HARRISBURG
717 761-3080
PHILADELPHIA
215 828-8300
609 835-3707
PITTSBURGH
412 631-8050
READING
215 388-8208
SCRANTON
717 587-1800
SOUTH CAROLINA
COLUMBIA
803 786-7607
GREENVILLE
803 232-1854

TENNESSEE
KNOXVILLE
615 825-0131
MEMPHIS
901 791-2123
NASHVILLE
615 244-8228
TEXAS
DALLAS
214 358-7185
DALLAS
214 358-3101
FORT WORTH
817 336-0802
HOUSTON
713 861-2483
LUBBOCK
806 793-2377
SAN ANTONIO
512 834-7421
UTAH
SALT LAKE CITY
801 328-1811
VIRGINIA
NORFOLK
804 488-1800
RICHMOND
804 358-5881
ROANOKE
703 563-8040
WASHINGTON
SEATTLE
206 285-2120
SPOKANE
509 328-2682
WISCONSIN
GREEN BAY
414 498-6466
MILWAUKEE
414 258-8535
WASHINGTON, D.C.
301 648-2100

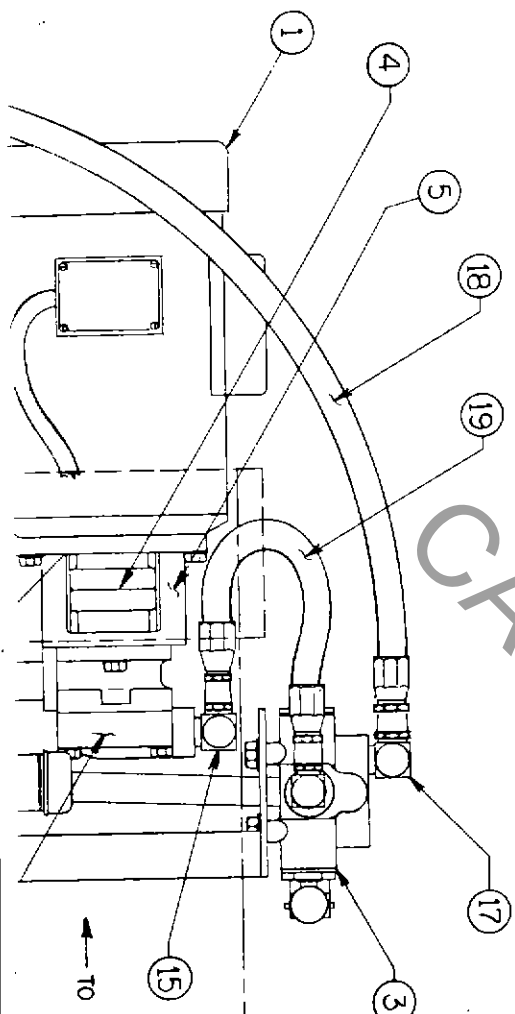
OPERATING FACILITIES OF THE CONTROL & SYSTEMS DIVISION

MARYLAND
ERS OF
PRODUCTS

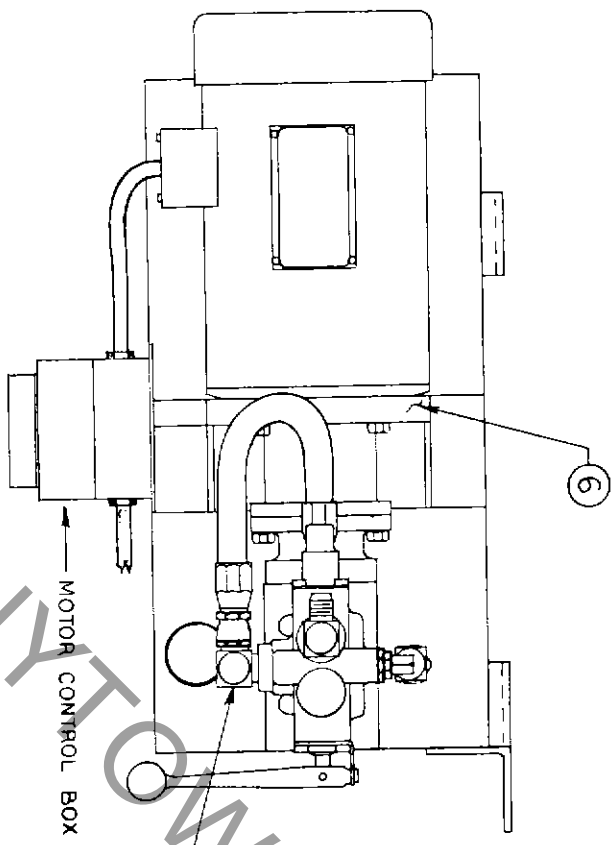
PLANTSVILLE, CONNECTICUT
MANUFACTURERS OF
ALLIED PRODUCTS

REDWOOD CITY, CALIFORNIA
MANUFACTURERS OF
RUNDEL PRODUCTS

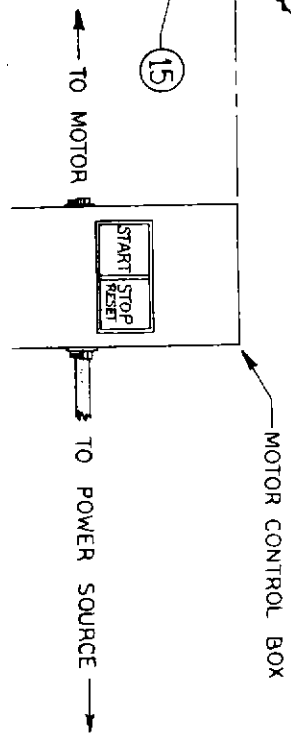
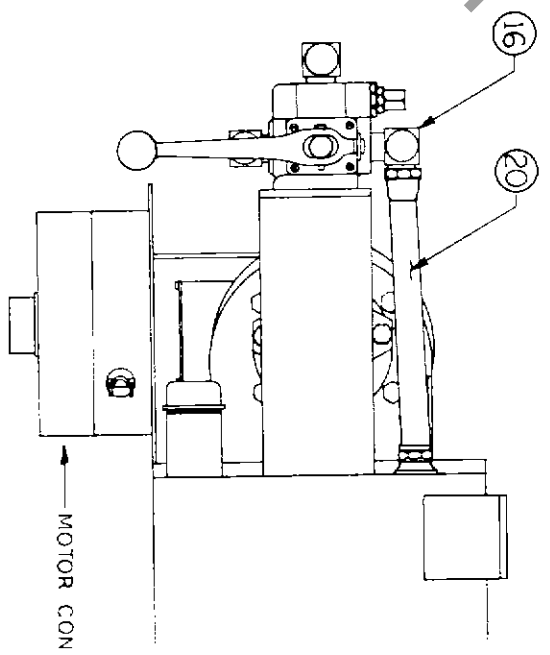
CLEVELAND, OHIO



— TOP VIEW —



— FRONT VIEW —



CARNY.TOWN.COM

KILINSKI MFG. COMPANY

MATERIAL BILL

Dwg. Title: HYDRAULIC ASSEMBLY Dwg. No. _____

Qty	Part No.	Part Number	Dwg. Size	Rev'n.	Description
1	1	SL 751	P		1½ (or 2) H.P. MOTOR - 1725 RPM 115/230 VOLTS SINGLE PHASE
					NEMA FRAME #184TEFC-C BALDOR #VL-3603 (or VL-3605)
2	1	SL 752	P		PUMP - VICKERS #V-210-2-1-C-12
3	1	STD 119	P		CONTROL VALVE - WEBSTER #2AV2301
4	1	STD 120	P		MAGNALOY COUPLING MODEL #200 (Pump Half ¾ Bore, Motor Half ⅞ Bore)
5	1	STD 121	P		HYD PUMP - TO MOTOR ADAPTER - PAUL MONROE #PD-3168-14
6	1	SL 753			HYD TANK AND PUMP MOUNTING
7	1	SL 754			HYD CYLINDER ASSEMBLY
8	1	STD 133	P		ANCHOR-MAT WIPER RING 5½ I.D. x 5⅞ O.D.
9	3	STD 134	P		ANCHOR-MAT POLY FLEX ¼ x 5½ I.D. x 6 O.D. PACKING
0	1	SL 754-9			PACKING GLAND NUT
1	2	SL 702-9			PIN
2	2	STD 102-5	P		SNAP KEY
3	1	STD 122	P		FLOW CONTROL VALVE - PELTROL #F30B

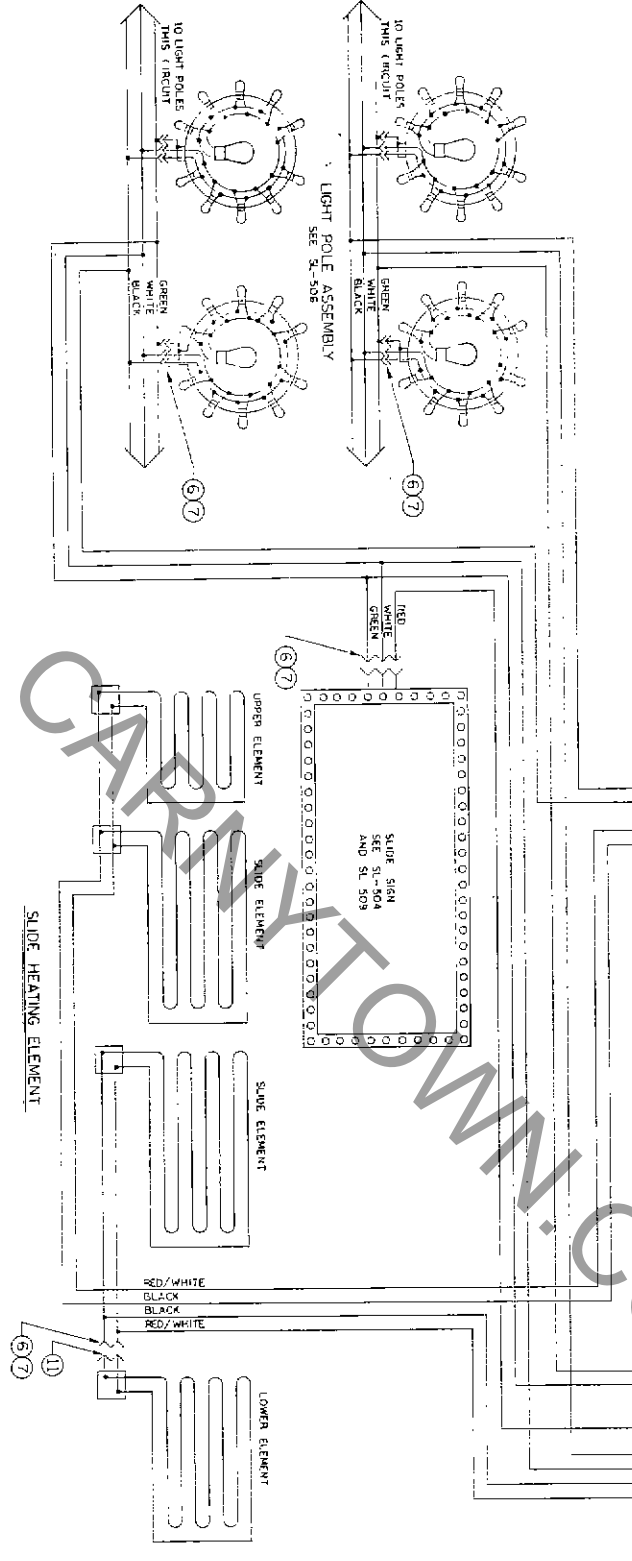
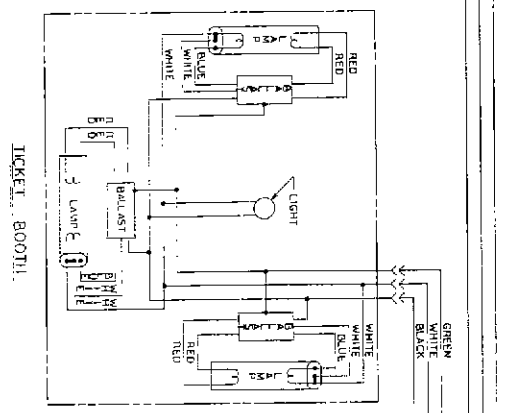
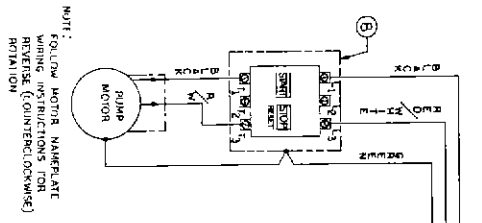
KILINSKI MFG. COMPANY

MATERIAL BILL

Dwg. Title ELECTRICAL COMPONENTS

D. P.

Key	Req'd / Unit	PART NUMBER	Dwg. Size	Rev'n.	DESCRIPTION
					(POWER CIRCUIT)
1	1	SL 743	P		MAIN BREAKER BOX - GOULD - ITE RAIN PROOF LOAD CENTER #W-E-Q-12MB
2	1	SL 744	P		CIRCUIT BREAKER - 2 POLE PLUG-IN - ITE CAT #QP-2-BO-20
3	2	SL 745	P		CIRCUIT BREAKER - 2 POLE PLUG-IN - ITE CAT #QP-2-BO-30
4	5	SL 746	P		CIRCUIT BREAKER - 1 POLE PLUG-IN - ITE CAT #QP-1-BO-15
5	20	SL 747	P		BELL BOX CAT #270
6	22	SL 748	P		WEATHER PROOF COVER - LEVITON #4925
7	22	SL 749	P		SINGLE RECEPTACLE - BRYANT #4710
					(PUMP MOTOR)
8	1	SL 750	P		MOTOR CONTROL BOX - MANUAL STARTER - ITE CAT #C-203B2
9	1	SL 780	P		WEATHER PROOF PLATE W/SELF CLOSING LID #3780-SC
10	1	STD 363	P		TWIST-LOCK RECEPTACLE - BRYANT #4700-1
11	1	STD 364	P		TWIST-LOCK MALE PLUG - BRYANT #7568



NOTES:

1. CROSSING WIRES ARE NOT CONNECTED ELECTRICALLY
2. RED/WHITE IS WHITE WIRE MARKED WITH RED TAPE AT TERMINAL CHOS

SYMBOLS:

- ELECTRICAL CONNECTION
- ⊕ - GROUND
- ⊖ - PLUG IN

KULINSKI MFG. COMPANY

ELECTRICAL COMPONENTS

SL-507

REMARKS

DESCRIPTION

QTY

STEP (Also used for Stepladder) (732-202)

PIN

SNAP KEY

HANDRAIL

SUPPORT LEG

SNAP KEY

LEG (Also used for Stepladder)

LEG SUPPORT BRACE

LEG SUPPORT BRACE PIN

SNAP KEY

SUPPORT LEG

WINCH--DUTTON LAINSON #1400

WINCH PIN

SNAP KEY

LOADING TUBE ROLLER #CS-4-4-119

SLIDE BAG

SAFETY MAT

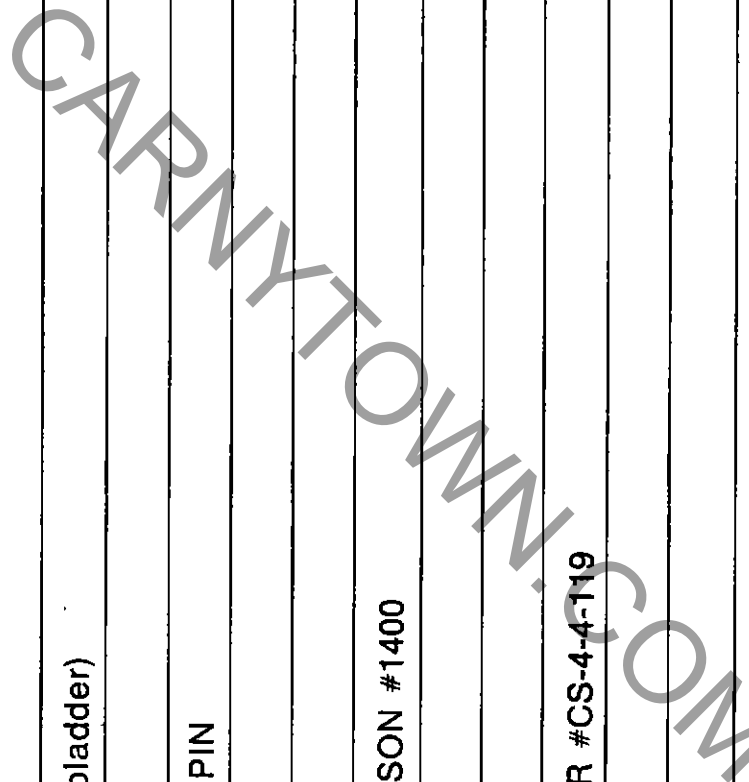
LIGHT POLE STORAGE RACK

WING NUT

3/16" 7x19 SPEC. GALVANIZED AIRCRAFT CABLE - 40 FT. LONG

3/16" GALVANIZED CABLE CLAMP

STARTING GATE STORAGE RACK



SER	Dwg Size	Rev	DESCRIPTION	REMARKS
			(SUSPENSION SYSTEM)	
P			TIRE-TUBE TYPE-10 PLY 9.00 x 20	
P			BUDD WHEEL 9.00 x 20	
P			#356 AXLE-STD 4x6 w/37" SPRING CENTERS (with 121 system)	
P			SUSPENSION SYSTEM	
			(LANDING GEAR AND OUTRIGGERS)	
			SCREW JACK	
			PIN	
P			SNAP KEY	
			BRACE	
			PIN	
P			SNAP KEY	
			OUTRIGGER	
			PIN	
P			SNAP KEY	
			TURNBUCKLE	
			PIN	
P			SNAP KEY	
P			AUSTIN 26" TWO SPEED LANDING GEAR #9-30-4444	
P			AUSTIN 26" SINGLE SPEED LANDING GEAR #9-30-4444	

CARNYTOWN.COM

REMARKS

DESCRIPTION

QTY
UNIT

(SLIDE ASSEMBLY)

SLIDE FRAME

P FIBERGLASS SLIDE SECTION 1 - 9 FT (Upper)

P FIBERGLASS SLIDE SECTION 2 - 18 FT

P FIBERGLASS SLIDE SECTION 3 - 18 FT

SLIDE FRAME REMOVABLE SECTION

P FIBERGLASS SLIDE SECTION 4 - 18 FT

LOWER CURVED CONNECTION

FIBERGLASS SLIDE SECTION 5 - 16 FT

PIN

P SNAP KEY

TAIL SECTION

FIBERGLASS SLIDE SECTION 6 - 12 FT

(FENCING, STEPS AND MISCELLANEOUS)

LONG OUTSIDE FENCE SECTION

SHORT OUTSIDE FENCE SECTION (Gate Entrance)

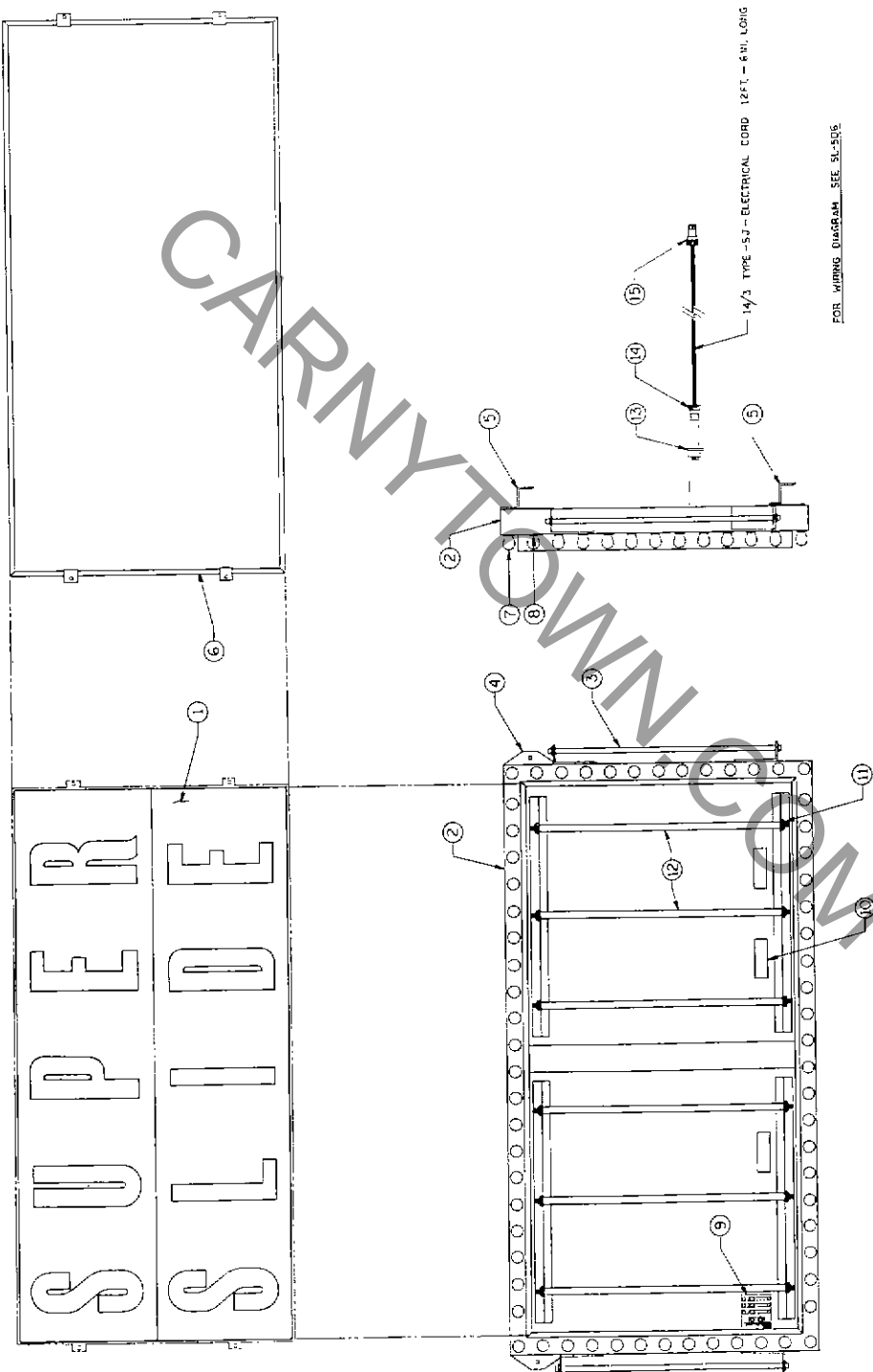
FENCE BASE

SLIDE BAG BOX

TICKET BOOTH

ID	Dwg Size	Rev	DESCRIPTION	REMARKS
			(SLIDE PLATFORM ASSEMBLY)	
			SLIDE PLATFORM	
			PLATFORM SUPPORT BRACE	
			PLATFORM STORAGE LINK	
	P		SNAP KEY	
			PLATFORM LOADING STEP	
			PLATFORM LOADING HANDRAIL	
	P		SNAP KEY	
			PLATFORM SIDE FENCE	
			PLATFORM REAR FENCE	
	P		SNAP KEY	
			PLATFORM CANOPY FRAME	
	P		CANOPY	
			(SIGN ELEVATING FRAME ASSEMBLY)	
			SIGN ELEVATING FRAME	
			CROSS SUPPORT BAR	
	P		SNAP KEY	
			SIGN ELEVATING FRAME TO CANOPY SUPPORT BRACKET	
			PIN	
	P		SNAP KEY	
			PULLEY	

CARNY TOWN.COM



KILINSKI MFG. COMPANY		EST. 1918
DESIGNED BY: DEE. T.		MADE IN U.S.A.
DATE: 5-7-76	SCALE:	
DRAWN BY:	CHECKED BY:	
SLIDE SIGN ASSEMBLY		
REV.:	REV.:	REV.:
A		SL-504

CARNY TOWN

