

MFG: KIDDIE RIDES
USA

GREAT
RIDE: WESTERN EXPRESS
TRAIN

604 Main Street
Venport, Iowa 52803



1-800-553-8000
(319) 326-6467

BASH FORD MANOR MALL
LOUISVILLE, Ky

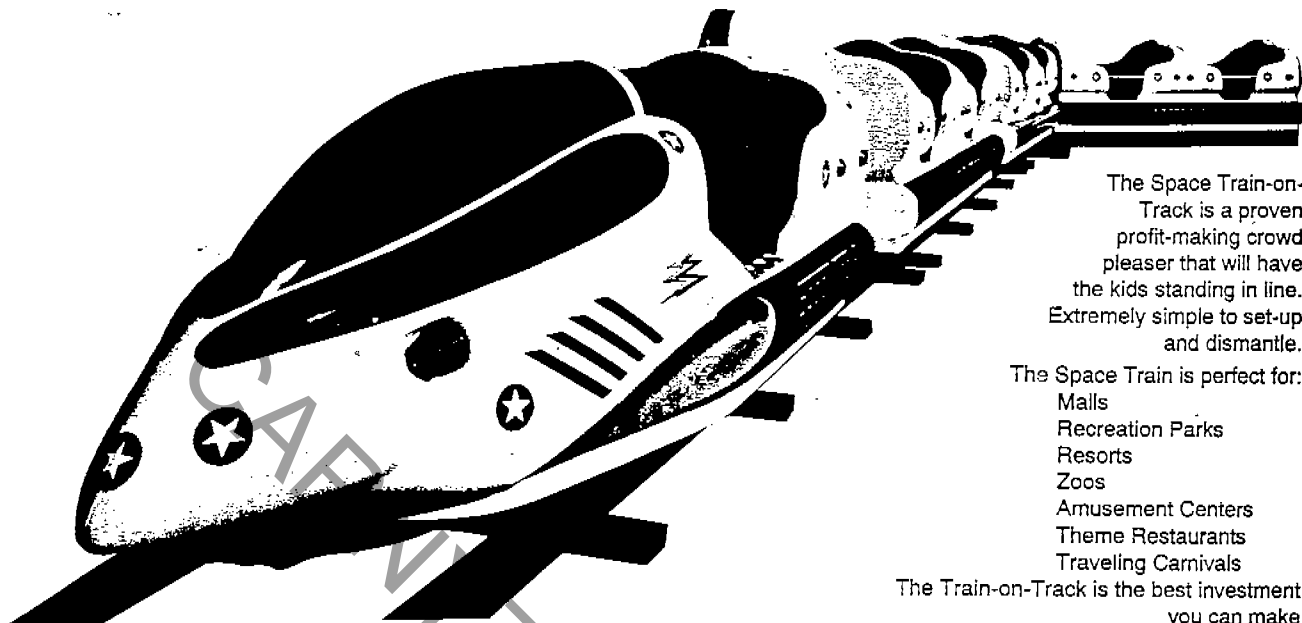
CARNY TOWN.COM

WESTERN EXPRESS TRAIN —

OPERATIONS AND MAINTENANCE

MANUAL

SPACE TRAIN ... On Track for Profit!



The Space Train-on-Track is a proven profit-making crowd pleaser that will have the kids standing in line. Extremely simple to set-up and dismantle.

The Space Train is perfect for:

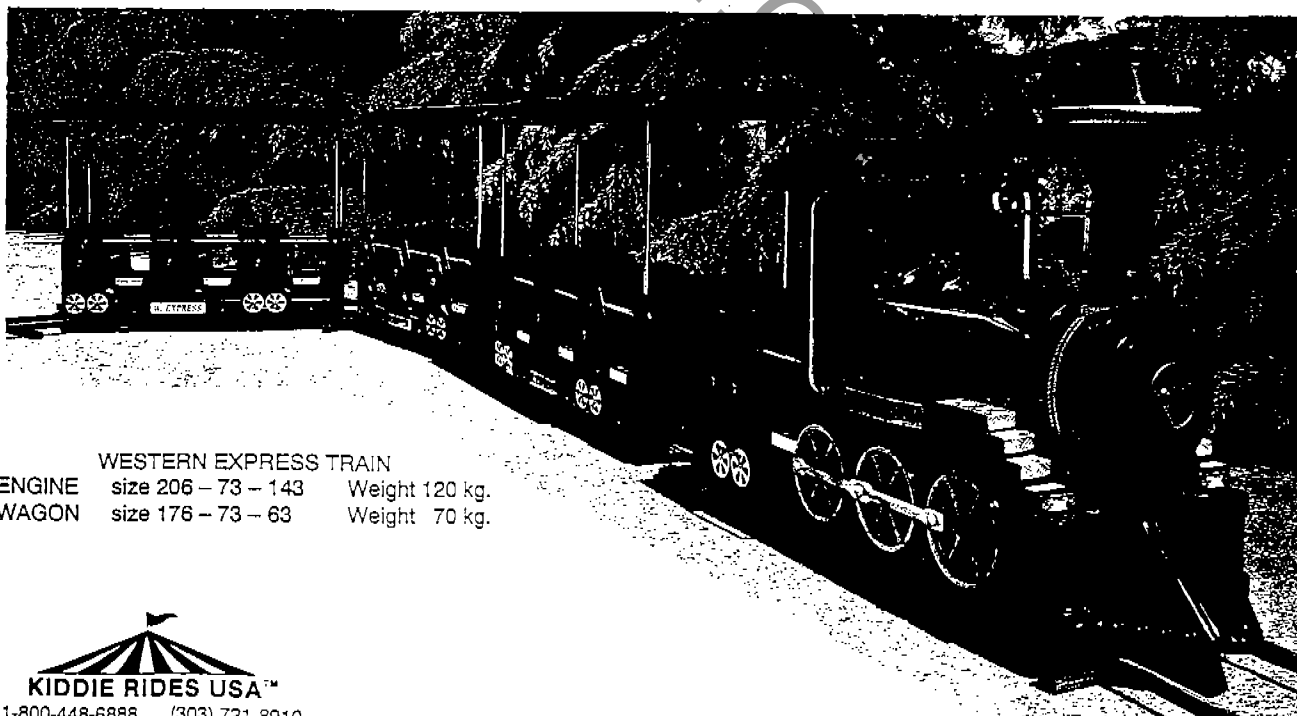
- Malls
- Recreation Parks
- Resorts
- Zoos
- Amusement Centers
- Theme Restaurants
- Traveling Carnivals

The Train-on-Track is the best investment you can make

ALL ABOARD! FOR PROFITS

Specifications & Features

- Control unit with six variable speeds.
 - 110 Volt-single phase
 - Track Voltage-24 to 48 volts DC for safety
 - Two 4-amp motors in locomotive
 - Locomotive holds 2 children
 - Locomotive can pull up to 6 wagons
 - Each wagon can hold 8 small children or 4 medium-sized children
 - Locomotive has controlled sound effects
- Locomotives – 220 lbs. – 150 lbs.
Wagons – 105 lbs. – 125 lbs.
Track – 60 lbs.
Rails Width – 1'6" – 1'3"



WESTERN EXPRESS TRAIN

ENGINE	size 206 – 73 – 143	Weight 120 kg.
WAGON	size 176 – 73 – 63	Weight 70 kg.



1-800-448-6888 (303) 721-8910
FAX (303) 771-7567

TRAIN SET-UP

Lay down track, 4 straight and 4 curved track (standard oval).

Insert bolts into holes on track making sure track is level then tighten, leaving one section of the track off.

Put the engine and cars on the track where the section of the track has been left off.

Be sure engine and cars are on the track properly.

Put last section of track in, and insert bolts into holes and tighten down, making sure that all track is level and fits tightly against each other.

Connect positive and negative leads to track as marked on track.

Plug in homing switch from control box to track. This insures the train will stop at the same spot every time.

Plug in control box to 110 VAC and make sure there is plenty of clearance around the track.

Turn on control box, set the timer for proper amount of time desired. Recommended time is 2 minutes.

Make sure of limited access to the train to prevent uncontrolled access to track.

Test train without riders to insure proper set-up and operation.

604 MAIN STREET
DAVENPORT IOWA 52803
3801 East 50th Avenue
Denver, Colorado 80216



800-553-8000
(319)326-6467
FAX(319)326-6060
1-800-448-6888
(303) 399-7191
Fax (303) 399-8144

TRAIN MAINTENANCE

Each day before you operate the ride take a visual check of the train for mechanical problems.

1. Lift the hood on the locomotive and inspect the chains for looseness. Make sure the chains are well lubricated.
2. Shake the cars, cars should not rock excessively.
3. Check for any wheel wear and replace parts where necessary.
4. Check under carriages for cracks on frame and welds.
5. Check all seal belts and make sure they operate properly.
6. Clean dirt and debris from the cars. (Keep the train clean at all times).
7. Wipe cars off each day with a damp cloth.
8. Wax the train one time per week. (Use Lemon Pledge wax for example). This prevents color fading and keeps your equipment looking new. DO NOT WAX SEATS!
9. Check Track:
 - a. Walk track several times per day.
 - b. Check for general movement, (track should hold a general distance of 3' from any wall or fence).
 - c. Check track bolts each day for tightness, tighten as needed.
 - d. Check electrical connections to track each day, make sure they are clean.
 - e. Check welded areas of track for cracks. Any cracks must be repaired before operation.

NOTE; The above items must be checked prior to each day's operation.

604 MAIN STREET
DAVENPORT IA 52803
3801 East 50th Avenue
Denver, Colorado 80216



800-553-800
(319)326-646
FAX(319)326-606
1-800-448-688
(303) 399-719
Fax (303) 399-814

TRAIN SPEED

The power to the train is supplied by a transformer that uses 110 volts and reduces the power to 24 volts DC to the track. Track is safe during operation, no shock can occur from track under normal conditions.

The transformer has settings from 1-6, one producing the slowest speed and six making the fastest speed. The adjustments are not for speed but for load factor. The train should never be operated above #2 setting unless the load otherwise determines.

Train ride time should be determined prior to operation, and duly noted. Children have a short attention span. Do not run the train too long. All trains are equipped with seat belts and it is recommended that seat belts be worn by all riders all the time.

Timer should be set for 2 minutes.

604 MAIN STREET
DAVENPORT IA 52803
3801 East 50th Avenue
Denver, Colorado 80216



800-553-8000
(319) 326-6467
FAX (319) 326-6060
1-800-448-6888
(303) 399-7191
Fax (303) 399-8144

WESTERN EXPRESS SPECIFICATIONS

	<u>Length</u>	<u>Width</u>	<u>Height</u>	<u>Weight</u>
Locomotive	7'	3'	5'	270 lbs.
Wagons	6' 8"	3'	2'	150 lbs.
Wagons\Roof	6' 8"	3'	4' 8"	200 lbs.
Track	10'			60 lbs.

Control unit requires standard 110 VAC single phase outlet with 6 controllable speeds.

Track power ranges from 18 VDC to 48 VDC.

Equipped with seat belts.

Entire train locked into track so train cannot derail.

2 year warranty on motors (2 per locomotive).

Drive chain easily accessible for lubrication.

Impact resistant fiberglass construction with heavy sealed gel-cots finish protected against fading from ultra-violet rays.

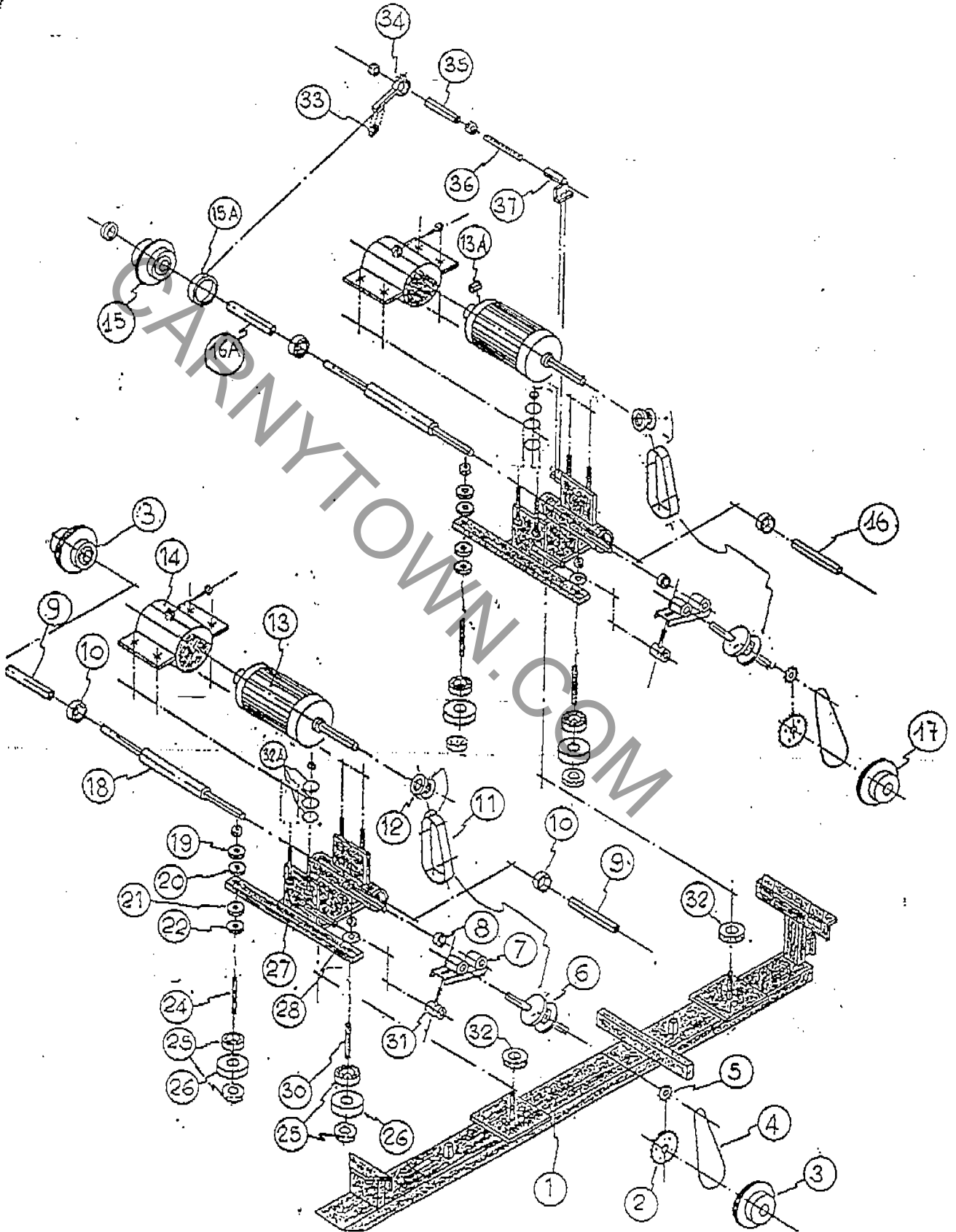
Each car equipped with exterior lights.

Solid state "space" sound with push button switches the child operates for additional sounds.

Loco capacity 2 children.

Carriage capacity 6 children.

Timer equipped (optional use) with automatic parking at predesignated location.

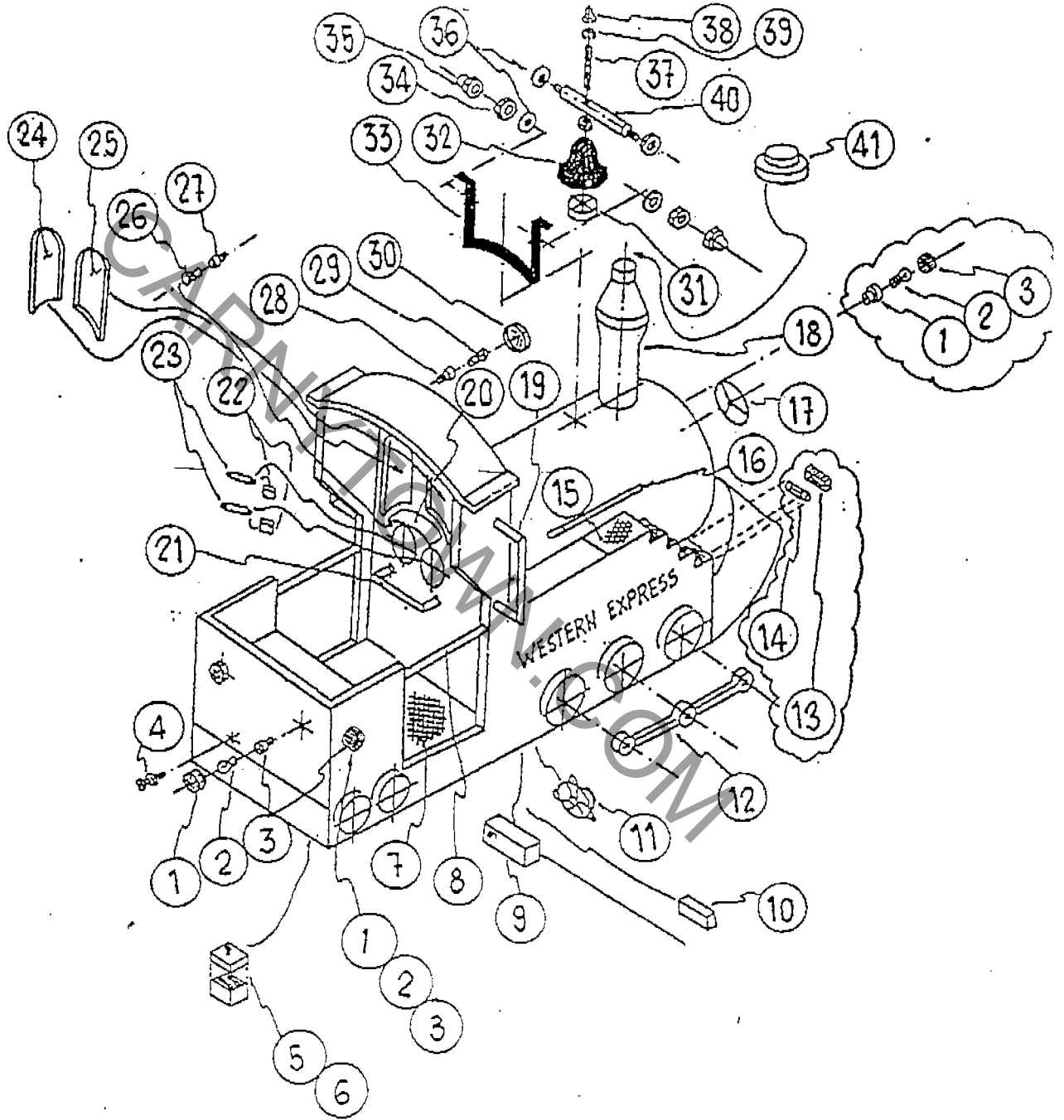


DISEGNO MECCANICO MOTRICE
WESTERN EXPRESS

- 1 Fanali laterali
- 2 Lampadina 12 V 3W a baionetta
- 3 Portalampada
- 4 Presa Members
- 5 Porta fusibile
- 6 Fusibile 8 Amp
- 7 Pedana alluminio
- 8 Tubo di protezione
- 9 Rumore
- 10 Gioco luci
- 11 Altoparlante
- 12 Biella Motrice
- 13 Trasparente
- 14 Lampadina 12 V 3 W a vite
- 15 Pedana in alluminio
- 16 Tubo laterale
- 17 Volantino da 170
- 18 Scocca in resina
- 19 Maniglione cromato
- 20 Plexiglass serigrafato
- 21 Maniglione motrice
- 22 Micro pulsanti
- 23 Pulsanti
- 24 Plexiglass destro
- 25 Plexiglass sinistro
- 26 Lampadina 12 V 3 W a vite
- 27 Portalampada Elios
- 28 Portalampada Elios
- 29 Lampadina 12 V 3 W a vite
- 30 Trasparente arancio
- 31 Batacchio campana
- 32 Campana
- 33 Supporto campana
- 34 Dado autobloccante
- 35 Dado ottone
- 36 Rondella
- 37 Vite per campana
- 38 Dado ottone 12
- 39 Dado 12 autobloccante
- 40 Asse portacampana
- 41 Calotta rossa

MECHANICAL DRAWING ENGINE WITH BELT
WESTERN EXPRESS

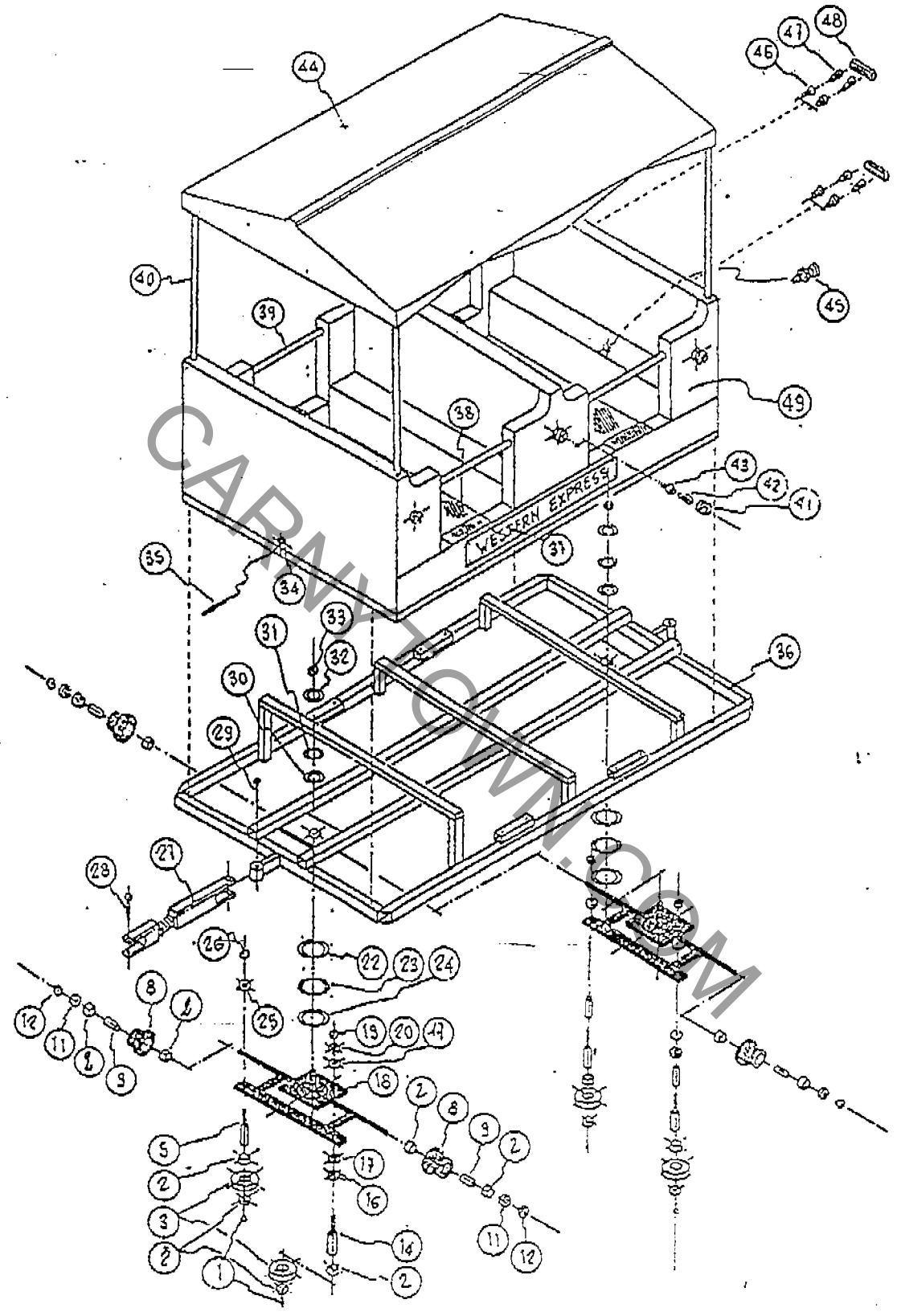
- 1 Side lens
- 2 Baionet bulb
- 3 Bulb holder
- 4 Socket Members
- 5 Fuse holder
- 6 Fuse 8 Amp
- 7 Aluminium steep plate
- 8 Safety handle
- 9 Sound
- 10 Lights effects
- 11 Loud speaker
- 12 Driving-rod
- 13 Front clear lens
- 14 Bulb 12 V 3 W
- 15 Aluminium plate
- 16 Handle side
- 17 Steering 170
- 18 Fiberglass body
- 19 Handle side
- 20 Plexiglass
- 21 Dashboard handle
- 22 Dashboard contact switch
- 23 Push bottom
- 24 Right plexiglass
- 25 Left plexiglass
- 26 Bulb 12 V 3 W
- 27 Bulb holder Elios
- 28 Bulb holder Elios
- 29 Bulb 12 V 3 W
- 30 Orange lens
- 31 Clapper of bell
- 32 Bell
- 33 Bell support
- 34 Nut
- 35 Brass nut
- 36 Washer
- 37 Bell screw
- 38 Brass nut
- 39 Nut
- 40 Bell axel
- 41 Red lens



DISEGNO TELAIO MOTRICE RUOTE IN NYLON
 WESTERN EXPRESS
 GREAT WESTERN
 SANTA FE'

MECHANICAL DRAWING ENGINE INDOOR WHEEL
 WESTERN EXPRESS
 GREAT WESTERN
 SANTA FE'

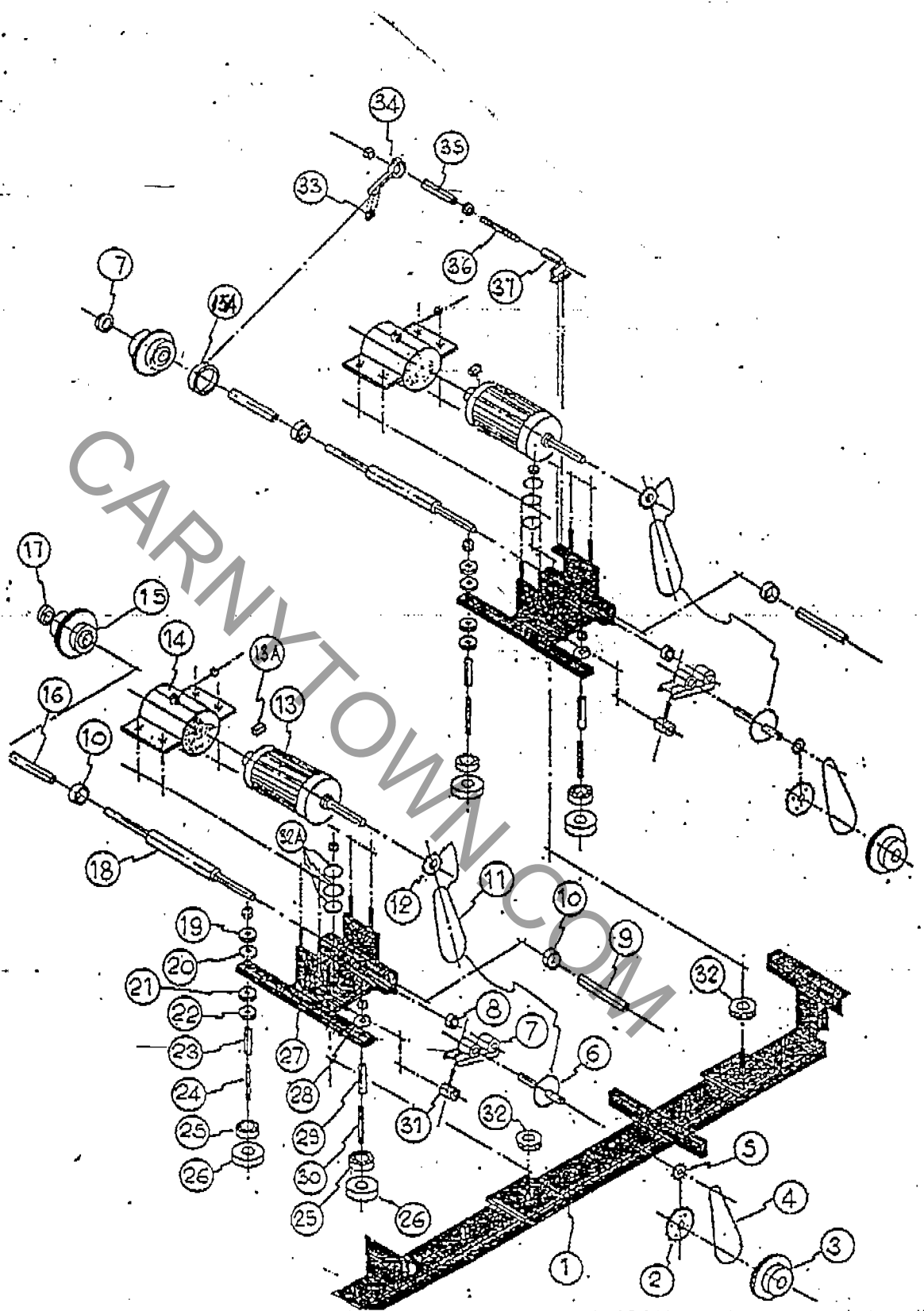
1 Telaio	1 Iron frame galvanized
2 Corona 229 3/8	2 Sprocket 229 3/8
3 Ruota in nylon	3 Nylon wheel
4 Catena lunga P44 3/8	4 Chain P44 3/8
5 Pignone Z12 con chiavetta	5 Gear with key Z12
6 Puleggia 34 L075 con albero	6 Pulley 34 L075 with shaft
7 Supporto	7 Bracket
8 Cuscinetto 6003	8 Bearing 6003
9 Distanziale	9 Remote control
10 Cuscinetto 62203	10 Bearing 62203
11 Cinghia 169 L075	11 Belt 169 L075
12 Puleggia 12 L075	12 Pulley 12 L075
13 Motore	13 Motor
13A Spazzole 14x7x17 R87	13A Brushes 14x7x17 R87
14 Supporto motore	14 Motor bracket
15 Ruota in ghisa con boccola in nylon	15 Cast-iron wheel with nylon bushing
15A Flangia in ottone	15A Brass flange
16 Distanziale	16 Remote control
16A Distanziale	16A Remote control
17 Ruota in ghisa	17 Cast-iron wheel
18 Asse	18 Axel
19 Rondella 14x42	19 Washer 14x42
20 Boccola in nylon	20 Nylon bushing
21 Boccola in nylon	21 Nylon bushing
22 Rondella 14x28	22 Washer 14x28
23	23
24 Perno	24 Pin
25 Cuscinetto 6003 17x35x10	25 Bearing 6003 17x35x10
26 Ruotine in nylon	26 Nylon wheel
27 Supporto per meccanica	27 Mechanical support
28 Rondella	28 Washer
29	29
30 Perno	30 Pin
31 Registro supporto	31 Support regulation
32 Cuscinetto reggispinta 40x80x13	32 Thrust bearing 40x50x13
32A Cuscinetto reggispinta 17x30x9	32A Thrust bearing 17x30x9
33 Spazzole MV 102	33 Brushes MV 102
34 Porta spazzola D10-20/65	34 Brushes holder D10-20/65
35 Boccola in nylon	35 Nylon washer
36 Vite 12x145	36 Screw 12x145
37 Supporto per portaspaazzola	37 Brushes holder support



DISEGNO MECCANICO VAGONE
WESTERN EXPRESS CON RUOTE IN NYLON

MECHANICAL DRAWING VAGON
WESTERN EXPRESS NYLON WHEELS

1	Vite 6x15	1	Screw 6x15
2	Cuscinetto 6003	2	Bearing 6003
3	Ruotina in nylon	3	Nylon wheel
5	Perno	5	Pin
8	Ruota in nylon	8	Nylon wheel
9	Distanziale	9	Remote control
11	Rondella	11	Washer
12	Dado	12	Nut
14	Perno	14	Pin
16	Rondella	16	Washer
17	Boccola in nylon	17	Nylon bushing
18	Supporto ruota	18	Wheel support
19	Dado	19	Nut
20	Rondella	20	Washer
22		22	
23	Cuscinetto reggispinta 40x60x13	23	Thrust bearing 40x60x13
24		24	
25	Rondella	25	Washer
26	Dado	26	Nut
27	Attacco vagoni	27	Wagon juncture
28	Vite	28	Screw
29	Vite	29	Screw
30		30	
31	Reggispinta 17x30x9	31	Thrust bearing 17x30x9
32		32	
33	Dado	33	Nut
34	Passacavo	34	Electric cable
35	Spinotto maschio Members	35	Male plugs Members
36	Telaio in ferro	36	Iron frame
37	Angolare in alluminio	37	Alluminium step plate
38	Pedana in alluminio	38	Alluminium platform
39	Tubo in acciaio	39	Safety handle
40	Asta per tettino	40	Pole roof
41	Fanale laterale colorato	41	Side lamp
42	Lampada a baionetta	42	Baionet bulb
43	Portalampada	43	Lamp holder
44	Tettino in resina	44	Fiberglass roof
45	Presa Members	45	Plugs Members
46	Portalampada	46	Bulb holder
47	Lampada a baionetta	47	Baionet bulb
48	Fanale posteriore rosso	48	Red back lamp
49	Scocca resina	49	Fiberglass body



MECHANICAL DRAWING WESTERN EXPRESS WAGONS FOR TRAIN WITH CHAIN

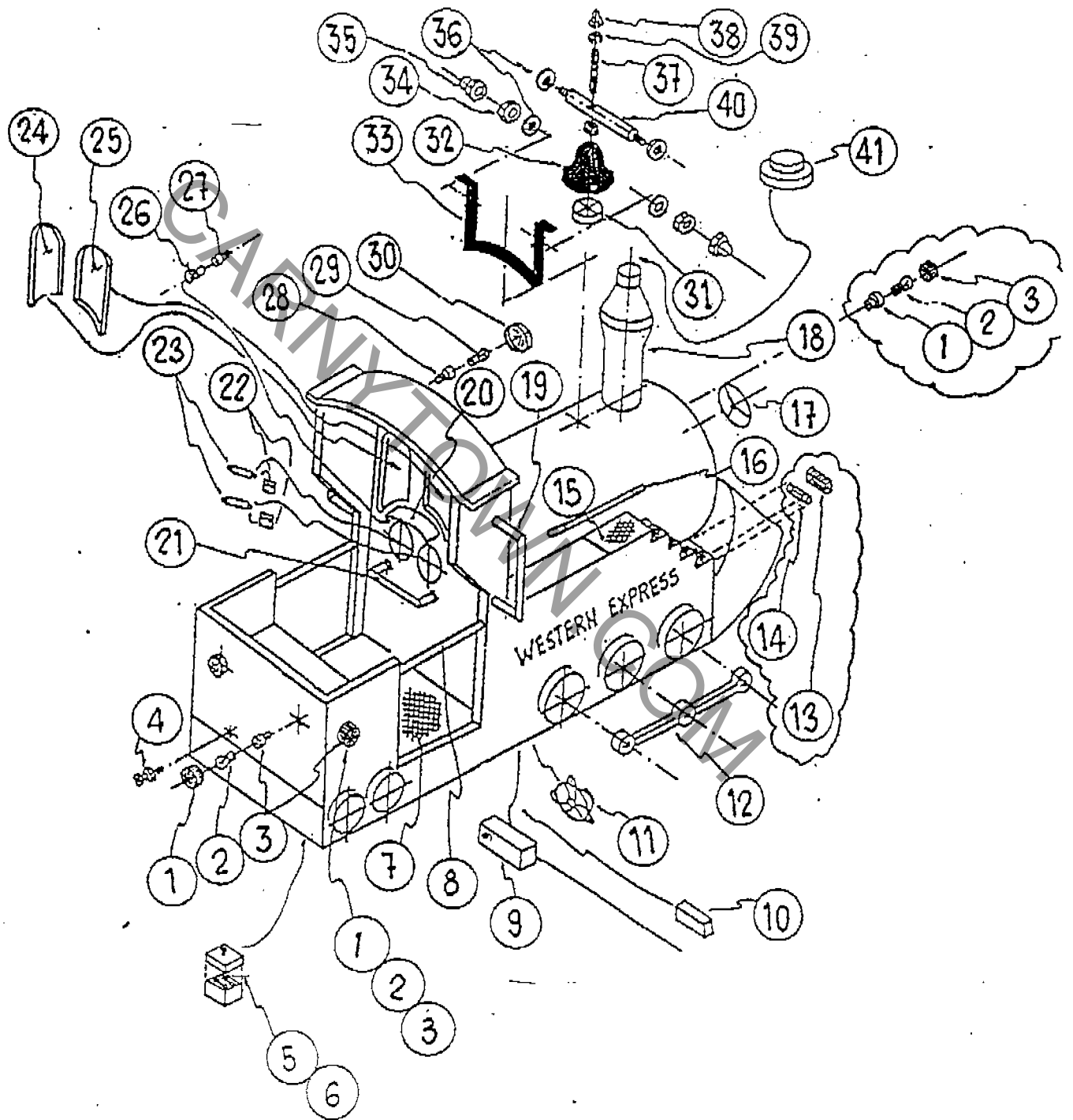
1	Vite 6x15	1	Screw 6x15
2	Rondella	2	Washer
3	Ruotina in nylon	3	Nylon wheel
4	Cuscinetto 62303 17x40x19	4	Bearing 62303 17x40x19
5	Perno	5	Pin
6	Distanziale	6	Remote control
7	Cuscinetto 6003 17x35x10	7	Bearing 6003 17x35x10
8	Ruota in nylon	8	Nylon wheel
9	Distanziale	9	Remote control
10	Cuscinetto 6003 17x35x10	10	Bearing 6003 17x35x10
11	Rondella	11	Washer
12	Dado	12	Nut
13	Cuscinetto 62303 17x40x19	13	Bearing 62303 17x40x19
14	Perno	14	Pin
15	Distanziale	15	Remote control
16	Rondella	16	Washer
17	Boccola in nylon	17	Nylon bushing
18	Supporto ruota	18	Wheel support
19	Dado	19	Nut
20	Rondella	20	Washer
21	Boccola in nylon	21	Nylon bushing
22		22	
23	Cuscinetto reggispinta 80x105x6	23	Thrust bearing 80x105x6
24		24	
25	Rondella	25	Washer
26	Dado	26	Nut
27	Attacco vagoni	27	Wagon juncture
28	Vite	28	Screw
29	Vite	29	Screw
30		30	
31	Reggispinta 51104 20x25x11	31	Thrust bearing 51104 20x35x11
32		32	
33	Dado	33	Nut
34	Passacavo	34	Electric cable
35	Spinotto maschio Members	35	Male plugs Members
36	Telaio in ferro	36	Iron frame
37	Angolare in alluminio	37	Alluminium step plate
38	Pedana in alluminio	38	Alluminium platform
39	Tubo in acciaio	39	Safety handle
40	Asta per tettino	40	Pole roof
41	Fanale laterale colorato	41	Side lamp
42	Lampada a baionetta	42	Baionet bulb
43	Portalampada	43	Lamp holder
44	Tettino in resina	44	Fiberglass roof
45	Presi Members	45	Plugs Members
46	Portalampada	46	Bulb holder
47	Lampada a baionetta	47	Baionet bulb
48	Fanale posteriore rosso	48	Red back lamp
49	Scocca resina	49	Fiberglass body

DISEGNO MECCANICO MOTRICE
WESTERN EXPRESS

- 1 Fanali laterali
- 2 Lampadina 12 V 3W a baionetta
- 3 Portalampada
- 4 Presa Members
- 5 Porta fusibile
- 6 Fusibile 8 Amp
- 7 Pedana alluminio
- 8 Tubo di protezione
- 9 Rumore
- 10 Gioco luci
- 11 Altoparlante
- 12 Biella Motrice
- 13 Trasparente
- 14 Lampadina 12 V 3 W a vite
- 15 Pedana in alluminio
- 16 Tubo laterale
- 17 Volantino da 170
- 18 Scocca in resina
- 19 Maniglione cromato
- 20 Plexiglass serigrafato
- 21 Maniglione motrice
- 22 Micro pulsanti
- 23 Pulsanti
- 24 Plexiglass destro
- 25 Plexiglass sinistro
- 26 Lampadina 12 V 3 W a vite
- 27 Portalampada Elios
- 28 Portalampada Elios
- 29 Lampadina 12 V 3 W a vite
- 30 Trasparente arancio
- 31 Batacchio campana
- 32 Campana
- 33 Supporto campana
- 34 Dado autobloccante
- 35 Dado ottone
- 36 Rondella
- 37 Vite per campana
- 38 Dado ottone 12
- 39 Dado 12 autobloccante
- 40 Asse portacampana
- 41 Calotta rossa

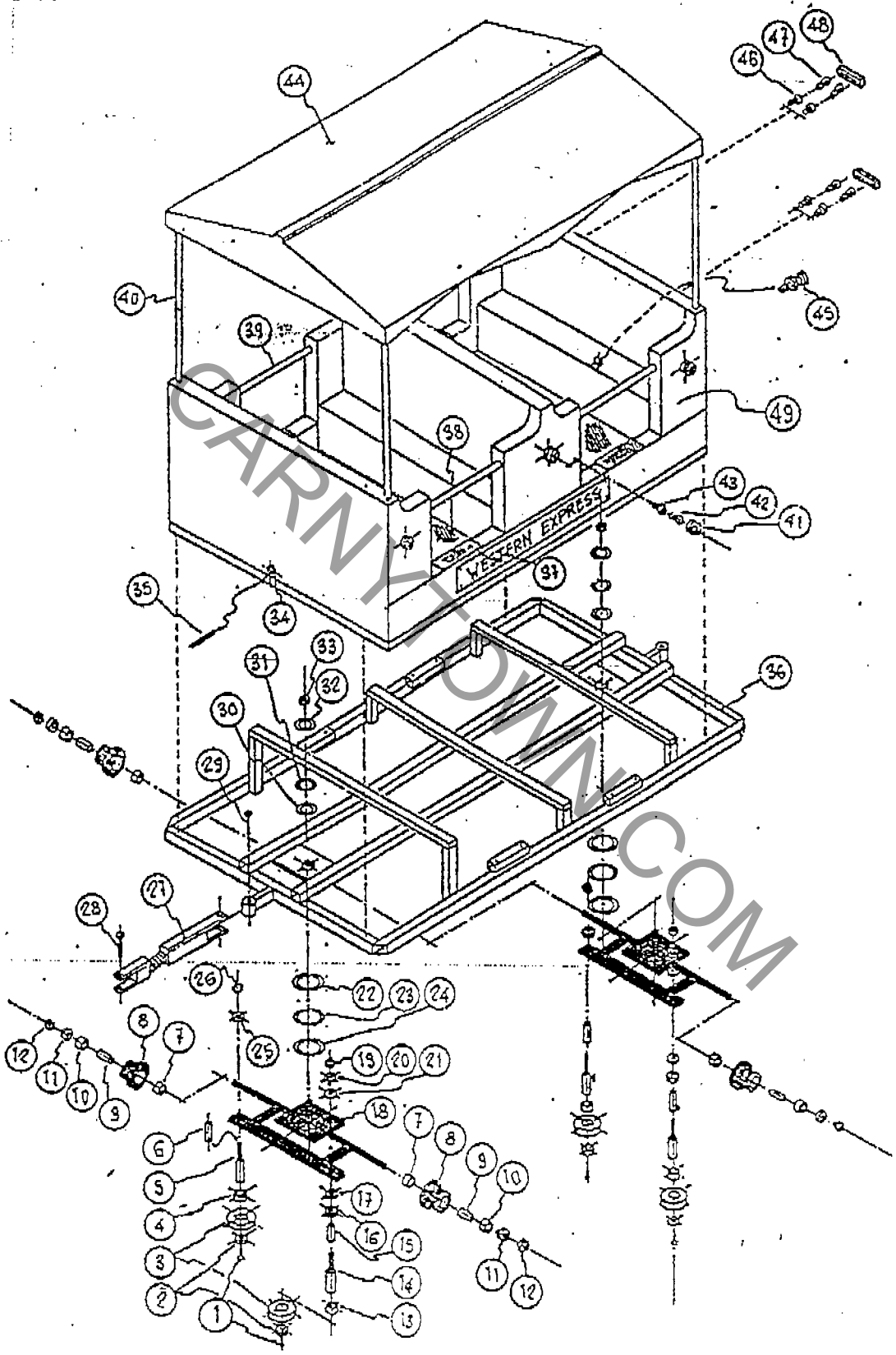
MECHANICAL DRAWING ENGINE WITH CHAIN
WESTERN EXPRESS

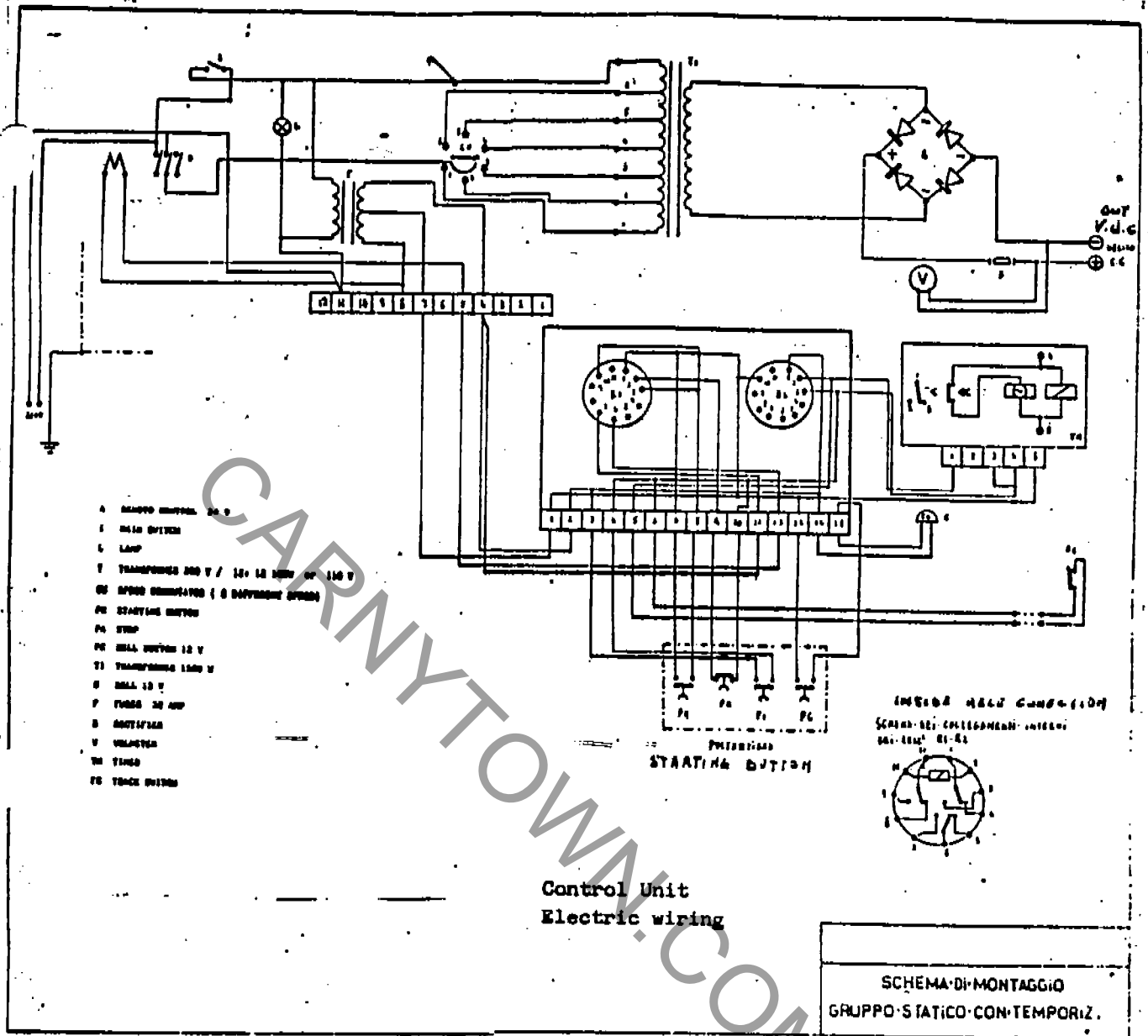
- 1 Side lens
- 2 Baionet bulb
- 3 Bulb holder
- 4 Socket Members
- 5 Fuse holder
- 6 Fuse 8 Amp
- 7 Aluminium steep plate
- 8 Safety handle
- 9 Sound
- 10 Lights effects
- 11 Loud speaker
- 12 Driving-rod
- 13 Front clear lens
- 14 Bulb 12 V 3 W
- 15 Aluminium plate
- 15 Handle side
- 17 Steering 170
- 18 Fiberglass body
- 19 Handle side
- 20 Plexiglass
- 21 Dashboard handle
- 22 Dashboard contact switch
- 23 Push bottom
- 24 Right plexiglass
- 25 Left plexiglass
- 26 Bulb 12 V 3 W
- 27 Bulb holder Elios
- 28 Bulb holder Elios
- 29 Bulb 12 V 3 W
- 30 Orange lens
- 31 Clapper of bell
- 32 Bell
- 33 Bell support
- 34 Nut
- 35 Brass nut
- 36 Washer
- 37 Bell screw
- 38 Brass nut
- 39 Nut
- 40 Bell axel
- 41 Red lens



COMPLETE CHASSIS DRAWING FOR WESTERN EXPRESS LOCOMOTIVE WITH CHAIN

1	Telaio	1	Iron frame galvanized
2	Corona Z29 3/8	2	Sprocket Z29 3/8
3	Ruota in ghisa	3	Nylon while
4	Catena lunga P44 3/8	4	Chain P44 3/8
5	Pignone Z12 con chiavetta	5	Gear with key Z12
6	Corona Z40 con albero	6	Sprocket with tree Z40
7	Supporto	7	Bracket
8	Cuscinetto 6003	8	Bearing 6003
9	Distanziale	9	Remote control
10	Cuscinetto 62203	10	Bearing 62203
11	Catena corta P36 3/8	11	Chain P36 3/8
12	Pignone Z13 3/8 per motore	12	Motor Gear Z13 3/8
13	Motore	13	Motor
13A	Spazzole 14x7x17 R87	13A	Brushes 14x7x17 R87
14	Supporto motore	14	Motor bracket
15	Ruota con boccola in nylon	15	Wheel with nylon bushing
15A	Flangia in ottone	15A	Brass flange
16	Distanziale	16	Remote control
17	Boccola in nylon	17	Nylon bushing
18	Asse	18	Axel
19	Rondella 14x42	19	Washer 14x42
20	Boccola in nylon	20	Nylon bushing
21	Boccola in nylon	21	Nylon bushing
22	Rondella 14x28	22	Washer 14x28
23	Distanziale	23	Remote control
24	Perno	24	Pin
25	Cuscinetto 6303 14x47x14	25	Bearing 6303 14x47x14
26	Ruotine in nylon	26	Nylon wheel
27	Supporto per meccanica	27	Mechanical support
28	Rondella	28	Washer
29	Distanziale	29	Remote control
30	Perno	30	Pin
31	Registro supporto	31	Support regulation
32	Cuscinetto reggispira	32	Thrust bearing
33	Spazzole MV 102	33	Brushes MV 102
34	Porta spazzola D10-20/65	34	Brushes holder D10-20/65
35	Boccola in nylon	35	Nylon washer
36	Vite 12x145	36	Screw 12x145
37	Supporto per portaspazzola	37	Brushes holder support





TECHNICAL DATA

CONTROL UNIT 1500 W * CURRENT IN LEFT 220 V; out left 24/28 V D.C.
SIX VARIABLE SPEED

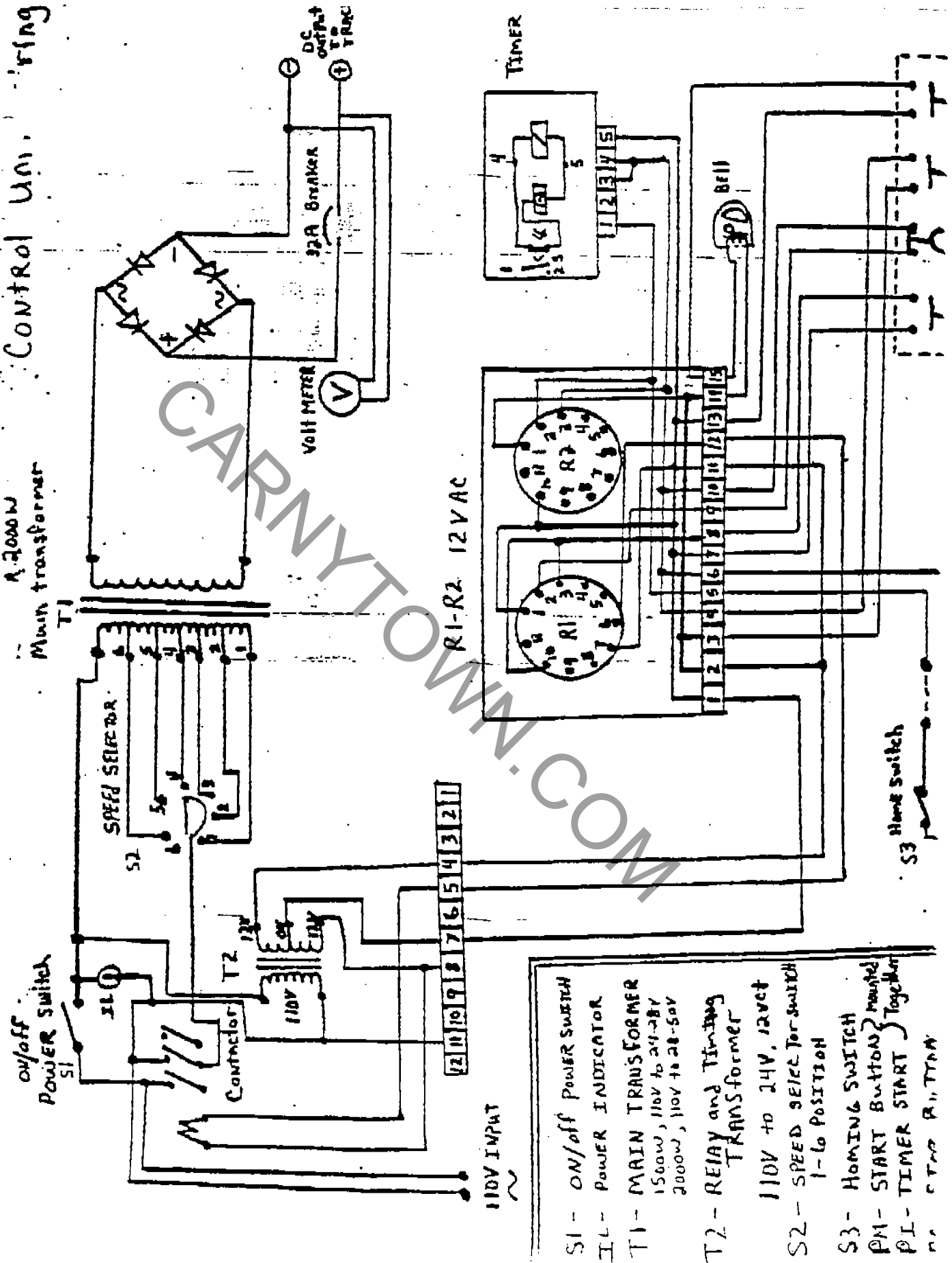
2000 W * CURRENT IN LEFT 220 V ; out left 28/50 V D.C. (only for Space Train)

MOTORS FOR TRAIN N° 2 = 400 W each 24/28 V D.C.

" " 28/50 V D.C. (only for space train)

Control Unit Wiring

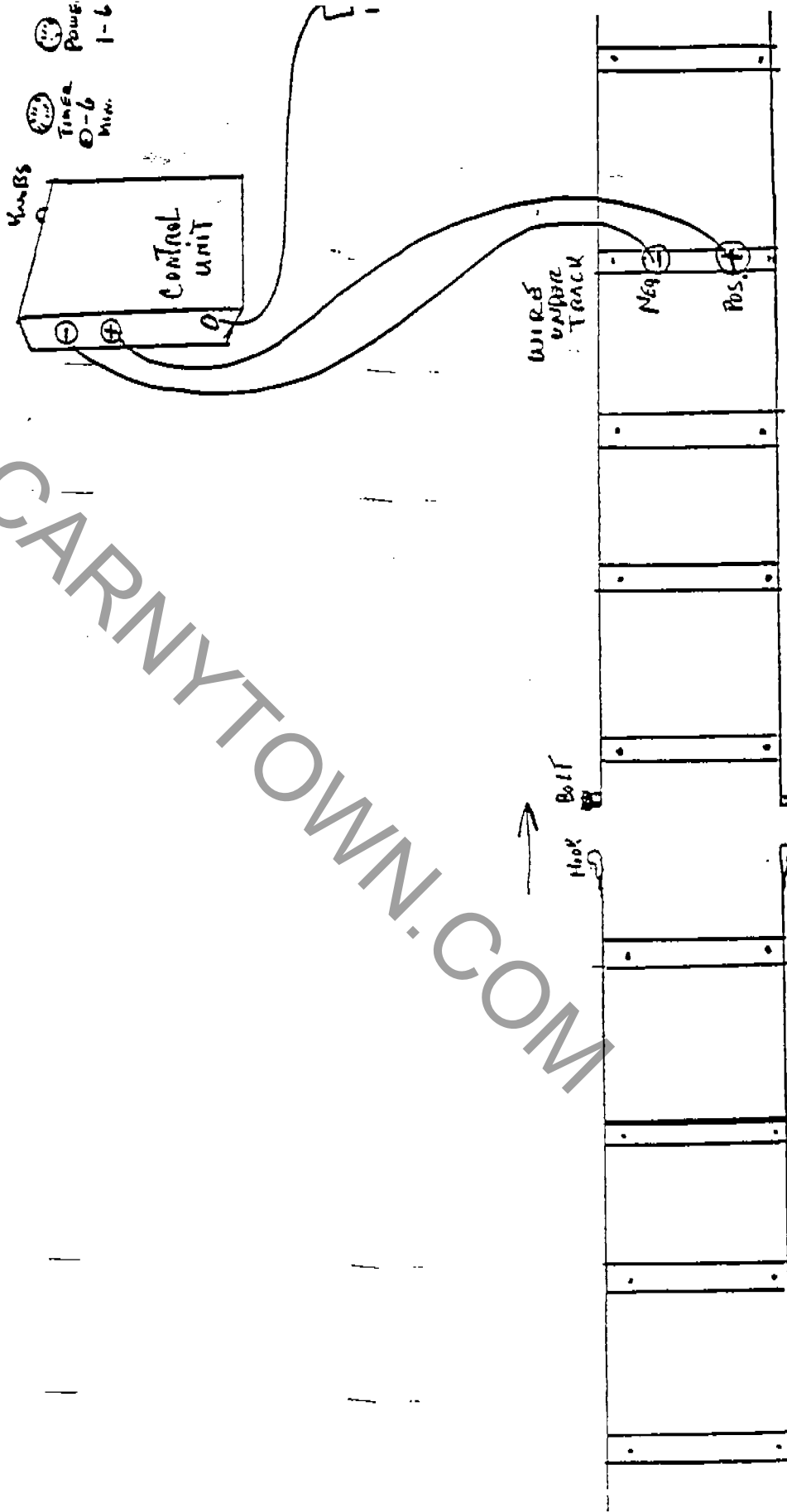
2000W
Main transformer

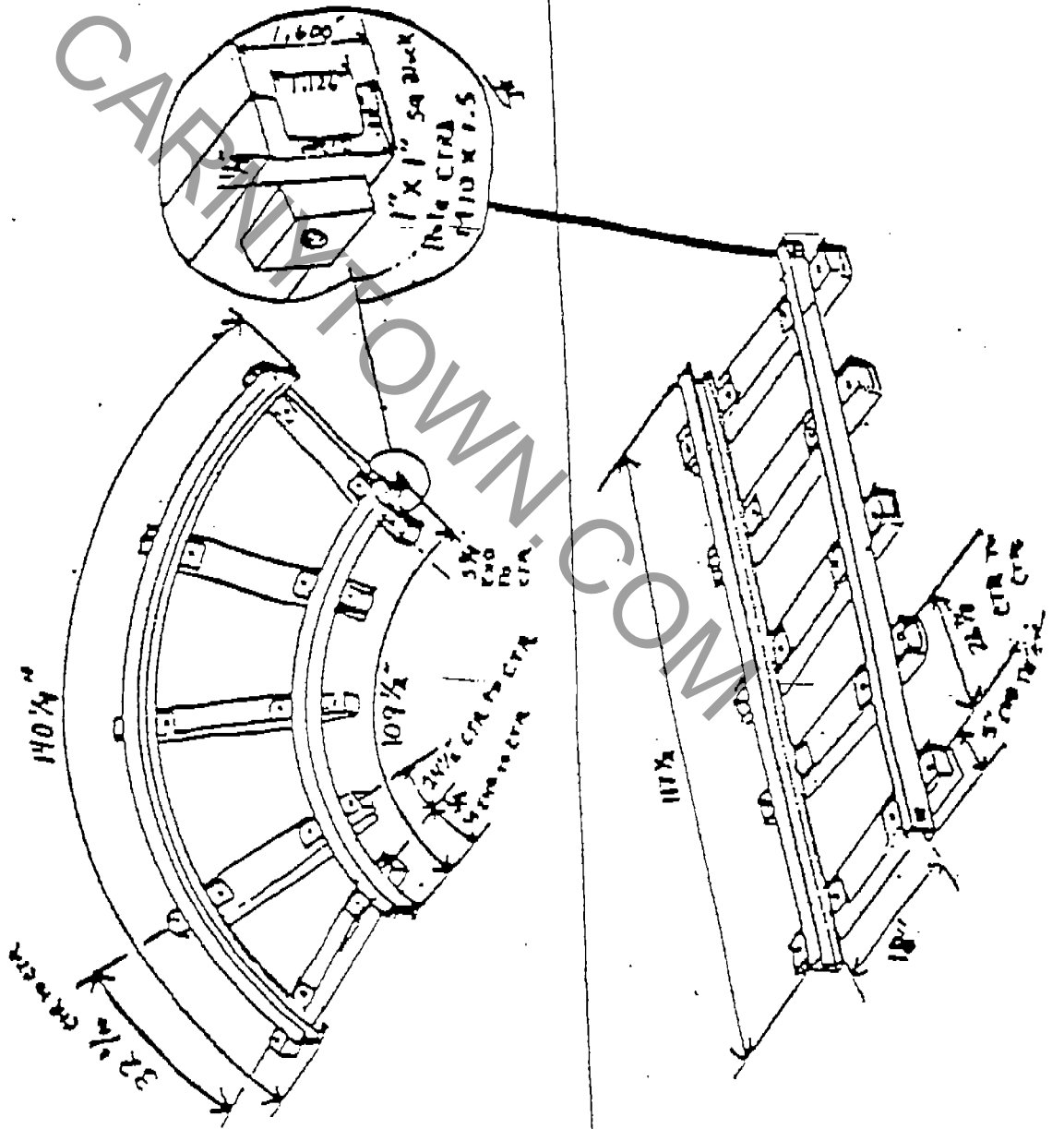


- S1 - ON/off POWER SWITCH
- IL - POWER INDICATOR
- T1 - MAIN TRANSFORMER
1500w, 110v to 24-28V
2000w, 110v to 28-56v
- T2 - RELAY and Timing TRANSFORMER
110V to 14V, 12vct
- S2 - SPEED SELECTOR SWITCH
1- to POSITION
- S3 - HOMING SWITCH
- PM - START BUTTON } mounted Together
- PI - TIMER START }
no. CTAS R1, TTM

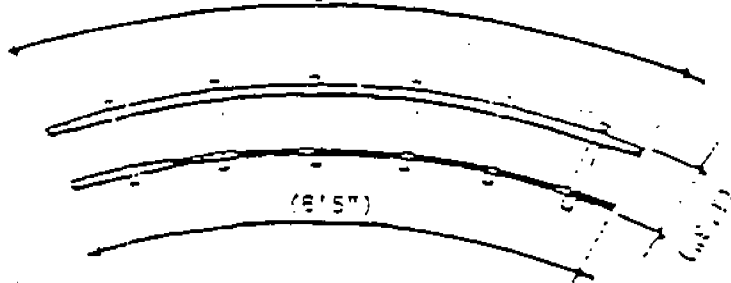
CARNYTOOWN.COM

CARNYTOWN.COM

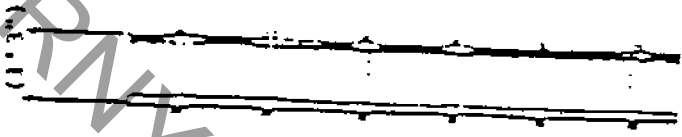




(10'4")



(8'5")



(8'11")

(9'9")

CARNYTTOWN.COM

Ashton-Barnes Engineers, Inc.

Engineering Services

319-355-3224
319-355-0321 (Fax)

3432 Jersey Ridge Road
Davenport, Iowa 52801

22 February 1993

Mr. Mike Evans
Kiddie Rides USA
5500 Greenwood Plaza Boulevard
Suite 274
Englewood, Colorado 80111

Re: Structural/Safety Inspection of Train
On Tracks Ride

Dear Mr. Evans:

Per your request on 19 February 1993, I inspected a standard "Train On Tracks" children ride which was set up at your facilities at 604 Main Street in Davenport, Iowa. I was accompanied during the inspection by William Schebler, P.E. We made a visual inspection of the ride's components. We inspected the engine and car bodies, chassis, wheels, car connections, track, and wheel/track interlocking system. The ride was operated by Jeff Hytecher. As stated on the attached affidavit, it is my professional opinion that all Train On Tracks ride components are structurally satisfactory and properly designed for safe operations.

I have discussed the inspection requirements of the State of Florida with Lowell Parrish, Florida Department of Agriculture and Consumer Services. The law requires a visual inspection for metal fatigue be performed by a Level II or III NDT Technician. As I have stated, I do not believe such a test is required to assure a safe Train On Tracks ride since I do not believe metal fatigue is a problem of concern in this application. However, Mr. Parrish cannot waive the requirement and as discussed, you will still have to have a technician with proper certification examine the ride.

Mr. Mike Evans

22 February 1993

Page 2

If you have any questions, please call.

Sincerely yours,

William D. Ashton

WILLIAM D. ASHTON
Professional Engineer



Encl
Affidavit

Copy furnished:
Mr. Jeff Hytecher
604 Main Street
Davenport, Iowa 52803

ARMYTOWN.COM



CURTIS F. McKNIGHT
 TESTING LABORATORIES, INC.
 Testing and Inspection

7708 E. BROADW
 TAMPA, FL 336
 (813) 628-0287

MAR 22 1993

INSPECTION REPORT

Date 2-17-93
 WO# 93-6399
 Customer Fred's Amusements Type of Inspection Visual Testing
 Address 8225 NUNDA Applicable Specifications Per ASNT
Gibson Ln, FL. 33534 Per STATE OF FL
 Customer Purchase Order No. Per Customer
 Description and/or Serial No. See below

RESULTS OF INSPECTION

Upon your request Visual Testing was performed on the below mentioned R/C's. There were no notable indications at time of our examination.

- 1) Space Train - Serial # 1992371
 MANUFACTURER: G.R. Rodina
- 2) Sizzler - Serial # 73608
 MANUFACTURER: Wisdom
- 3) Airplane Swing - Serial # TMC-001
 MANUFACTURER: Thumberg
- 4) Swing & Sway - Serial # 00617 - Thumberg
- 5) Mini Enterprise - Serial # 201-8498 - Zampeca
- 6) Merry-Go-Round - Serial # 101107156 - Klausche

Prepared by [Signature] Approved by [Signature] LEVE

- 7) Fun Slide - Serial # [unclear] - Fred's Amusements

DATE :

QUALITY CONTROL REPORT

TEXTILE PLANT

CUSTOMER : KIDOLE RIDE U.S.A
ATT'N : MR. STEWART J. KELLED
PRODUCT : ROUNE 447 - 2400

ORDER No. FROM OCTOBER 25 70

QUALITY :

PROPERTIES :

SPECIFICATION

TEST RESULTS :

TEX 2150 - 2600
SOLIDS (%) 1.24 - 1.40
MOISTURE (%) 0.010 - 0.020

TEX SOLIDS

2431	1.29
2418	1.27
2411	1.28
2397	1.23
2416	1.21
2420	1.24
2452	1.28
2489	1.25
2461	1.28
2421	1.28
2436	1.29
2391	1.29
2482	1.33
2458	1.35
2484	1.32
2437.8	1.28
99	0.14

OBSERVATIONS :

TESTED BY :

2A

ALEJANDRO GUTIERREZ

SHIPPED BY :

WAL

APPROVED BY :

WALTER PAUL PHILIPP P.