



MFB: Kid Power Systems  
RIDE: Video Fun House

# Music Video Party Fun House

*Fans*



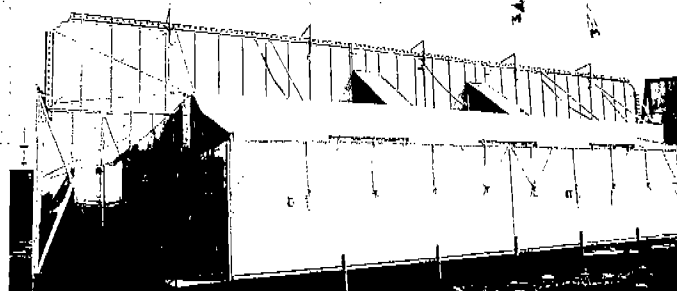
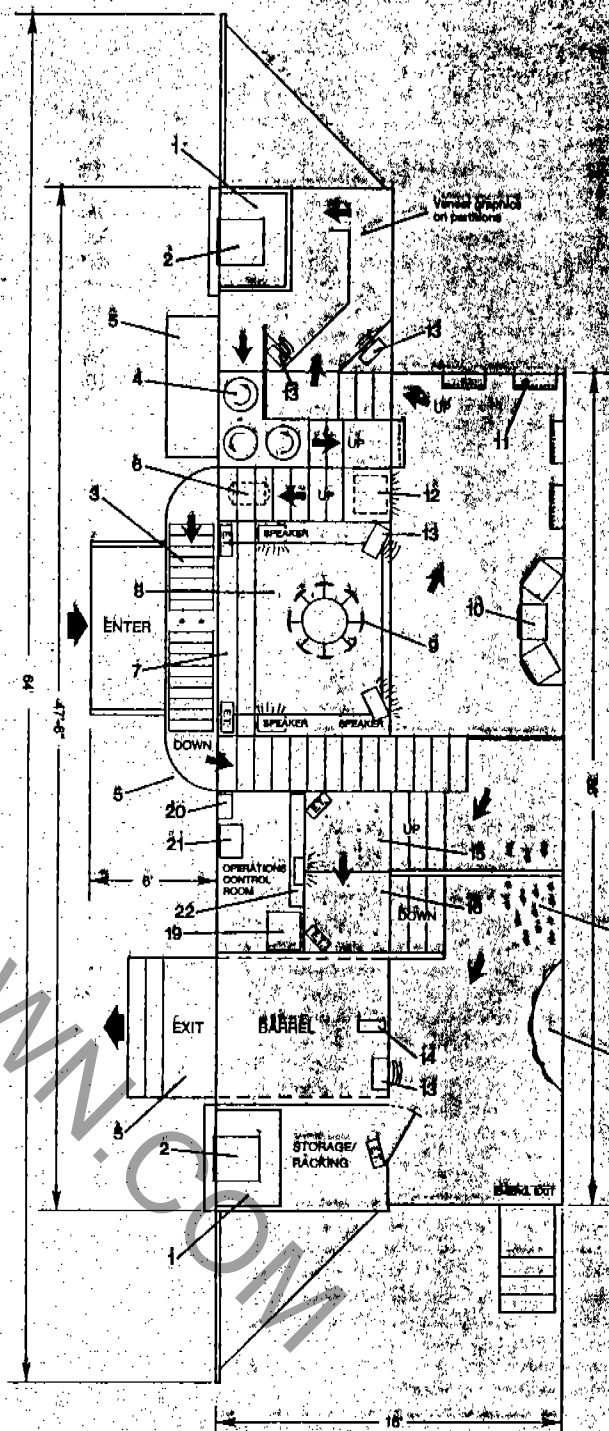
## STANDARD SPECIFICATIONS

- 48' low boy semi-trailer
- Tandem axle, Duals
- Air-Rides Suspension, Spring Brakes
- Steel Belted Radial Tires
- Electric- 3 PH, 150' lead
- Over 400 chase lights in mirror stainless cans/marquee
- All steel/aluminum construction
- Fire/Safety Management System as per CNA/NFPA regulations
- 10 KVA Power Conditioning Equipment for protecting electronics
- Air Compressor with manually operated (elec.) air jets
- 5 each "Funny Mirrors" with attached rope lights
- 5 each mechanical devices included plus rollers
- Ride top/awnings of canopy fabric and back-lit
- 4 each 500 watt quartz overhead
- 2 men 2 hours up or down

## AUDIO VISUAL EQUIPMENT

- 5 each television sets (cathode ray)
- 2 each large external speakers, 4 each internal small speakers
- Deluxe audio amplifying equipment. (All audio generated from video tapes)
- 4 each heavy duty strobe lights
- 2 each VCR's/Audio controlled lighting component
- 1 each deluxe smoke machine (optional)
- 1 each "ALIEN" entrance light fixture
- 5 each "E.T." light fixtures
- Special veneer graphics on interior walls
- Large library of video tapes available

- 1 - Big Screen Television
- 2 - Large Outboard Speaker
- 3 - Rollers on Balcony
- 4 - Turntables (3) (motorized)
- 5 - Awning (3)
- 6 - Air Compressor ASME approved
- 7 - Moving Stairs (motorized)
- 8 - Rocker Room (motorized)
- 9 - "ALIEN" Light
- 10 - 3 Televisions
- 11 - "Funny Mirrors" (5) with rope lights
- 12 - Internal Bass Speaker
- 13 - Heavy Duty Strobe Lights
- 14 - Smoke Machine (optional)
- 15 - Bungy Forest
- 16 - Bumpy Floor (motorized)
- 17 - Alum. Chk. Pl. Floor thru out
- 18 - Deluxe Exit Light Fixture
- 19 - 10 KVA Power Cond. Machine
- 20 - Fire Safety Management Syst.
- 21 - VCR/Audio Console
- 22 - Main Elec. Panel



Rear View

# IMPORTANT

HEIGHT LIMITATION FOR **ROCK AND ROLL  
AMERICA** FUN HOUSE IS 40" MINIMUM.  
PLEASE POST ACCORDINGLY.

CARNEYTOWN.COM

## STANDARD SPECIFICATIONS

### FOLDED UP DIMENSIONS

LENGTH 48'

WIDTH 102"

HEIGHT 13'-8"

WEIGHT 35,000 LBS.

### SET UP DIMENSIONS

LENGTH 64' (8' FOLDED OUT OF BOTH ENDS OF TRL.)

WIDTH/DEPTH 22'

HEIGHT 21'

SET BACK FROM MIDWAY LINE 5'-8"

WATER TANK REQUIREMENTS - SPRINKLER SYSTEM

329 GALLONS (APPROX)

### POWER REQUIREMENTS

150' LEAD OF 4/4 PROVIDED 220 VOLT SINGLE PHASE 80 AMP SERVICE  
REQ'D.

**TRAVELING DOWN THE ROAD SUGGESTIONS**

- 1) DRAIN THE WATER TANK WHICH IS PROVIDED FOR THE FIRE SPRINKLER SYSTEM. IT IS RECOMMENDED THAT THIS WATER BE DRAINED OFF OF THE MIDWAY IF POSSIBLE. THE DRAIN GATE VALVE IS LOCATED CENTERED UNDER THE TANK WHICH IS LOCATED RIGHT BEHIND THE TRAILER GOOSE NECK.**
- 2) DO NOT ATTEMPT TO MOVE THE TRAILER UNTIL THE BAGS FOR THE AIR RIDE SUSPENSION HAVE INFLATED TO THEIR FULL 2" HEIGHT.**
- 3) BE AWARE THAT IN THE FOLDED UP POSITION THAT THERE IS EXPOSED NEON GLASS TUBING. BE CAUTIOUS OF LOW BRANCHES OR OTHER SUCH LOW OBSTRUCTIONS.**
- 4) CHECK ALL PINS AND KEYS THROUGHOUT THE RIDE BEFORE ATTEMPTING TO TRANSPORT. THIS INCLUDES ROOF WINGS, DOUBLE FOLD END WINGS, BACK FLOOR AND BACK END WALLS, UPPER BALCONY, BOTH FRONT DECKS AND LOWER BALCONY. LOCK ALL DOORS BEFORE TRANSPORT. UPPER BALCONY WILL REQUIRE TIE DOWN STRAPS.**

**SET UP PROCEDURE**

**1) LOCATE TRAILER ON MIDWAY; DRIVER SIDE IS MIDWAY SIDE OF THE FUN HOUSE. ALLOW 8' MIN. EITHER END OF THE TRL. FOR WING FOLD OUTS. NOTE: THE TRL. WILL SIT 5'-8" OFF OF THE MIDWAY LINE.**

**2) SHORE FRONT LANDING GEAR PROPERLY, BLOCK REAR TIRES AND REMOVE TRACTOR.**

**3) LEVEL TRAILER. LEVEL FRONT TO BACK AND SIDE TO SIDE. REAR LANDING GEAR ARE PROVIDED AND THEY ARE LOCATED BETWEEN THE REAR AXLES. ALWAYS SHORE ALL CONTACT POINTS PROPERLY. NOTE: EXACT LEVELING IS NOT REQUIRED.**

**4) SET UP FRONT OF RIDE FIRST. THIS WILL ULTIMATELY GIVE YOU ACCESS TO THE WINCH CONTROLS WHICH WILL ALLOW YOU TO LOWER THE BACK FLOOR.**

**A) REMOVE THE 2 HANDRAILS EACH FROM THE BACK SIDE OF THE ENTRANCE AND EXIT PLATFORMS. SET THESE ASIDE. REMOVE AND ALSO SET ASIDE THE EXIT STAIRS FROM THE BACK SIDE OF THE ENTRANCE PLATFORM.**

**B) UNPIN AND LOWER ENTRANCE PLATFORM. SHIM AND CROSS LEVEL IF NECESSARY.**

**C) EXIT PLATFORM. THIS REQ'S. 2 EA. 18" JACKSTANDS. THESE JACKS ARE STOWED IN THE BACK ROOM BEHIND THE 'BARREL'. ACCESS**

**DOOR IS LOCATED ON THE BACKSIDE OF THE TRAILER. NOTE: USE EM505 KEY THROUGHOUT.**

**INSERT JACKSTANDS , UNPIN DECK AND LOWER. LEVEL FROM FRONT TO BACK. MAKE SURE THIS PLATFORM IS SEATED AND SUPPORTED PROPERLY. ATTACH EXIT STEPS. USE PROVIDED PINS AND LEVELING FEET FOR THE STEPS. INSERT HANDRAILS (MARKED R AND L) INTO POCKETS AND HOOK TO FRONT OF RIDE SIMULTANEOUSLY**

**D) AWNING CAN NOW BE INSTALLED OVER EXIT PLATFORM. REMOVE RETAINING BRACKET AND SWING OUT AWNING ARMS 90\*. INSERT FRONT CROSS BAR. WITH AID OF A LADDER INSERT AWNING INTO AWNING RAIL, PULL ACROSS, SPREAD OVER FRAME AND SNAP INTO FINAL POSITION.**

**E) LOWER FRONT BALCONY. LOCATED OVER GOOSE NECK OF TRAILER. WITH THE AID OF A LADDER AND 2 PEOPLE ON THE GROUND HOLDING IN ON BALCONY DECK, UNPIN AT TOP CENTER OF BALCONY AND SLOWLY LOWER A FULL 90\*. IT WILL COME TO REST ON ITS OWN. LOWER THE ATTACHED RED HANDRAIL A FURTHER 180\* AND ALLOW TO HANG FOR THE TIME BEING.**

**5) LOWERING THE BACK FLOOR.**

**A) UNPIN AND SWING OUT BOTH END WINGS 90\*.**

**B) CLIMB UP THE LADDERS (2) PROVIDED ON THE BACK SIDE OF THE BACK FLOOR AND UNPIN FROM THE TRAILER AT BOTH LOCATIONS. 5 JACKSTANDS ARE PROVIDED TO SET THE FLOOR. THESE JACKSTANDS ARE LOCATED ON THE REAR STORAGE ROOM (BEHIND BARREL)**

**C) THE BACK FLOOR LOWERS WITH A 110 VOLT MOTOR AND GEAR BOX. NOTE: BEFORE LOWERING UNDER POWER VISUALLY CHECK**

**TO SEE THAT THE 3 NYLON STRAPS ARE CONNECTED PROPERLY TO THE BACK FLOOR STRAP BRACKETS.**

**D) THE WINCH CONTROL DRUM SWITCH IS LOCATED IN THE ENTRANCE ROCKER ROOM SUPPORTED FROM THE CEILING.**

**NOTE: ANY 110 V AUXILIARY POWER SOURCE MAY BE USED. (20 AMP)**

**USE A LADDER TO REACH THE DRUM SWITCH ITSELF.**

**E) NOTE: NO ONE AT ANY TIME IS STAND UNDER THE BACK FLOOR WHILE IT IS BEING LOWERED. ENERGIZE DRUM SWITCH AND LOWER BACK FLOOR. HOLD OUT END WINGS SOMEWHAT TO ALLOW FOR PROPER CLEARANCE.**

**F) STOP LOWERING ABOUT 12" FROM FINAL POINT AND INSTALL ALL 5 JACKSTANDS. LOWER FLOOR NOW ALL THE WAY. NOTE: END WINGS ACTUALLY CONNECT TO FLOOR WITH A PIN IN SLOT. ADJUST ALL JACKSTANDS SO THAT WITH BOTH ENDS OF FLOOR RESTING ON END WINGS , THE ENTIRE LENGTH OF THE FLOOR IS AS FLAT AND STRAIGHT AS POSSIBLE. REMOVE STRAPS AND POWER BACK UP ONTO THEIR RESPECTIVE DRUM.**

#### **6) COMPLETING THE BACK ROOM**

**A) FLIP UP BACK WALL (ONE BEFORE THE OTHER) NOTE: ADJUSTING THE OUTER JACKSTANDS MAY BE REQUIRED TO GET THE 2 BACK WALLS TO MATE PROPERLY IN THE UPRIGHT POSITION.**

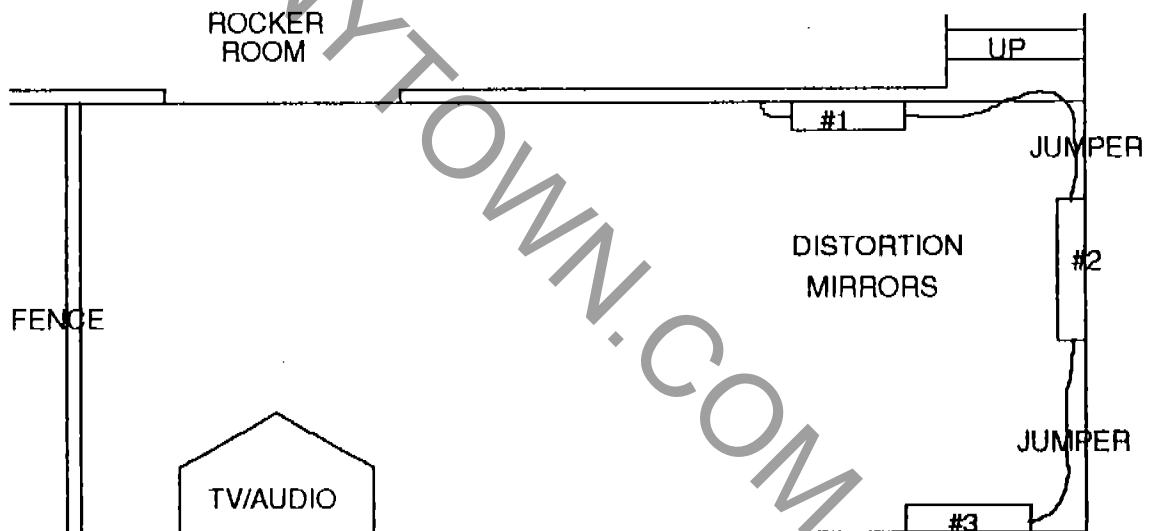
**B) INSTALL 6 ROOF BEAMS- THEY ARE LOCATED IN THE INTERNAL HALLWAY NEXT TO THE BARREL THEY ARE INTERCHANGEABLE. INSERT THE LONG ROD END OF THE BEAM TO THE BRACKET**

**LOCATED AT THE UNDERSIDE OF THE TRAILER ROOF AT ABOUT EVERY 5'.**

**NOTE: FOR SAFETY REASONS ALWAYS KEY ROOF BEAMS AS THEY ARE INSTALLED..**

**C) SWING OUT THE RED DIVIDER FENCE WHICH SEPARATES THE BACK ROOM INTO 2 HALVES. SLIDE PIN INTO BACK ROOM AT HOLE PROVIDED.**

**D) HANG THE 3 DISTORTION MIRRORS. THEY ARE LOCATED IN THE ROCKER ROOM HANGING ON THE SIDE WALLS. SEE DIAGRAM BELOW. PLUG IN MIRROR #1 AND INSTALL JUMPER CORDS.**



**BACK ROOM FLOOR PLAN  
RIGHT SIDE**

**E) INSTALL TV/SPEAKER CONSOLE. ROLL OUT UNIT FROM ROCKER**

*ROOM BEING CAREFUL FROM ONE LEVEL TO THE OTHER. NOTE:  
UNIT IS TOP HEAVY. GO SLOWLY AND TAKE YOUR TIME. 3 PEOPLE  
ARE RECOMMENDED FOR THIS JOB. SECURE TO THE BACK WALL  
ACROSS FROM THE ROCKER ROOM AND ATTACH WITH THE  
RUBBER SNUBBERS PROVIDED. RAP AUDIO/VIDEO FEED AROUND  
ADJACENT ROOF BEAM AND CONNECT AT CONSOLE AT UPPER  
LEFT HAND CORNER.*

*F) REMOVE 'ENTER' SIGN FROM REAR STORAGE ROOM AND TAKE  
AROUND TO FRONT OF RIDE.*

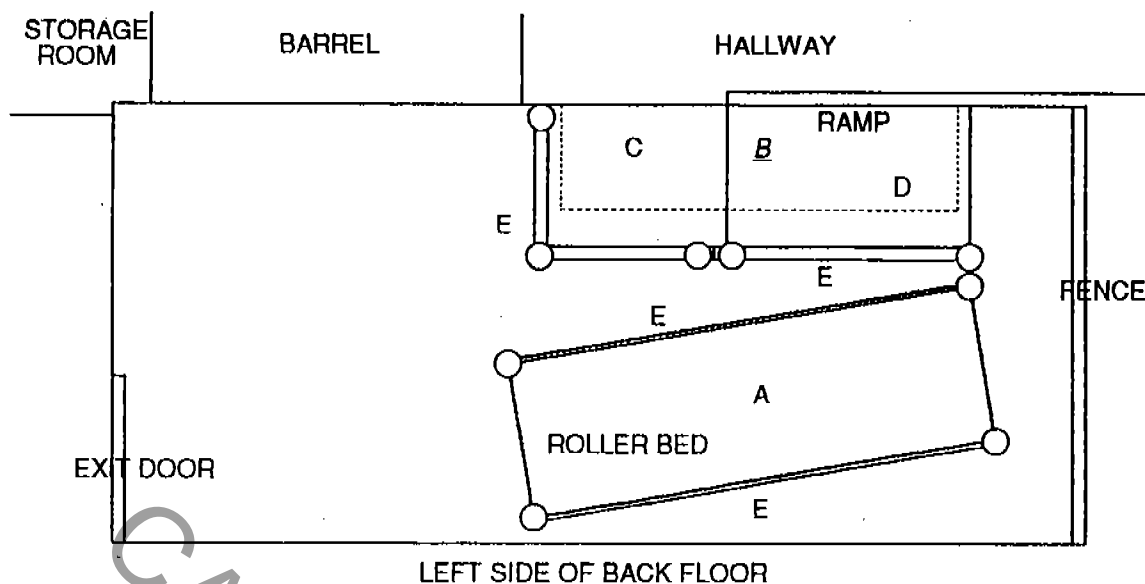
*G) AT BARREL END OF BACK ROOM:*

*INSTALL: A) INSERT ROLLER DEVICE FROM THE BARREL INTO  
HOLE IN BACK FLOOR.*

*B) INSTALL FLOOR PANEL INTO SPACE IN FRONT OF  
TIRES TO COMPLETE A FULL FLOOR AREA.*

*C) INSTALL PLATFORM AND DOWN RAMP FROM  
HALLWAY OPENING COMPLETING PATHWAY TO BACK  
FLOOR ELEVATION.*

*D) INSTALL ALL HANDRAILS. SEE DIAGRAM BELOW.*



*ITEMS C B D ARE LOCATED IN HALLWAY*

*ITEM A IS LOCATED IN BARREL (PADDED)*

*ITEMS E ARE LOCATED IN BACK ROOM IN A RACK*

*NOTE: C PINS TO THE EDGE OF THE TRAILER*

*D PINS TO THE FACE OF C*

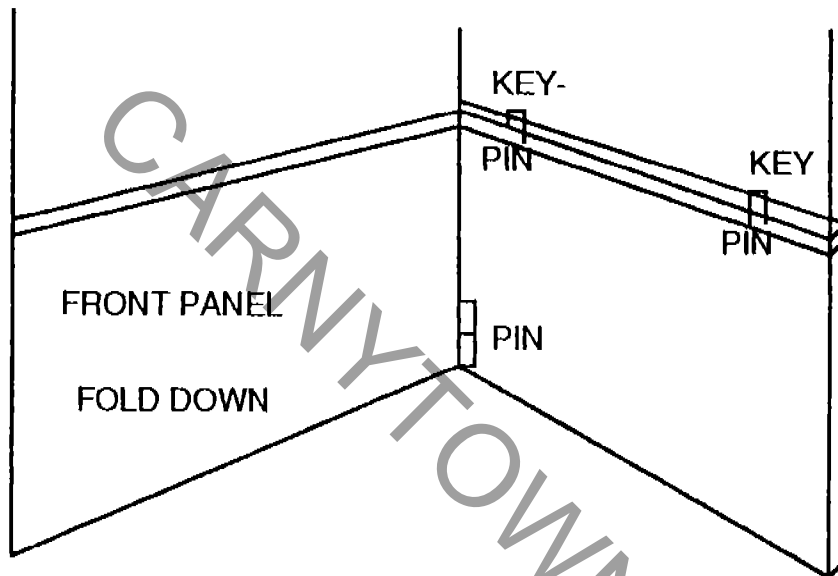
*INSERT HANDRAILS E INTO C, D AND INTO FLOOR ON BOTH SIDES OF A.*

*6) FOLDING OUT END WINGS. AT EITHER END OF TRAILER: UNPIN FROM TRAILER AND SWING OUT 90°, THEN FOLD OUT INTERNAL END WING ALSO 90°. THE SUPPORT BRACE ARMS ARE HANGING VERTICALLY INSIDE THIS SYSTEM. THE BRACES ARE NUMBERED ACCORDINGLY. 2 BRACES PER SYSTEM WILL SECURE THE WINGS PROPERLY.*

*NOTE: WHEN THE FRONT END WINGS ARE OUT AND SECURE, UNPIN FRONT LOWER PANEL AND SWING DOWN 180°*

**7) REMOVE ITEMS STORED IN GOOSE NECK OF TRL. UNPIN AND SLIDE BACK ALUMINUM ACCESS DOOR PANEL LOCATED ON LEFT SIDE OF NOSE OF THE TRL. REMOVE: 1) 2 TRUSS COLUMNS 2) 1 OVERHEAD LIGHT TRUSS FIXTURE 3) 1 LOWER FRONT END SCENERY PANEL.**

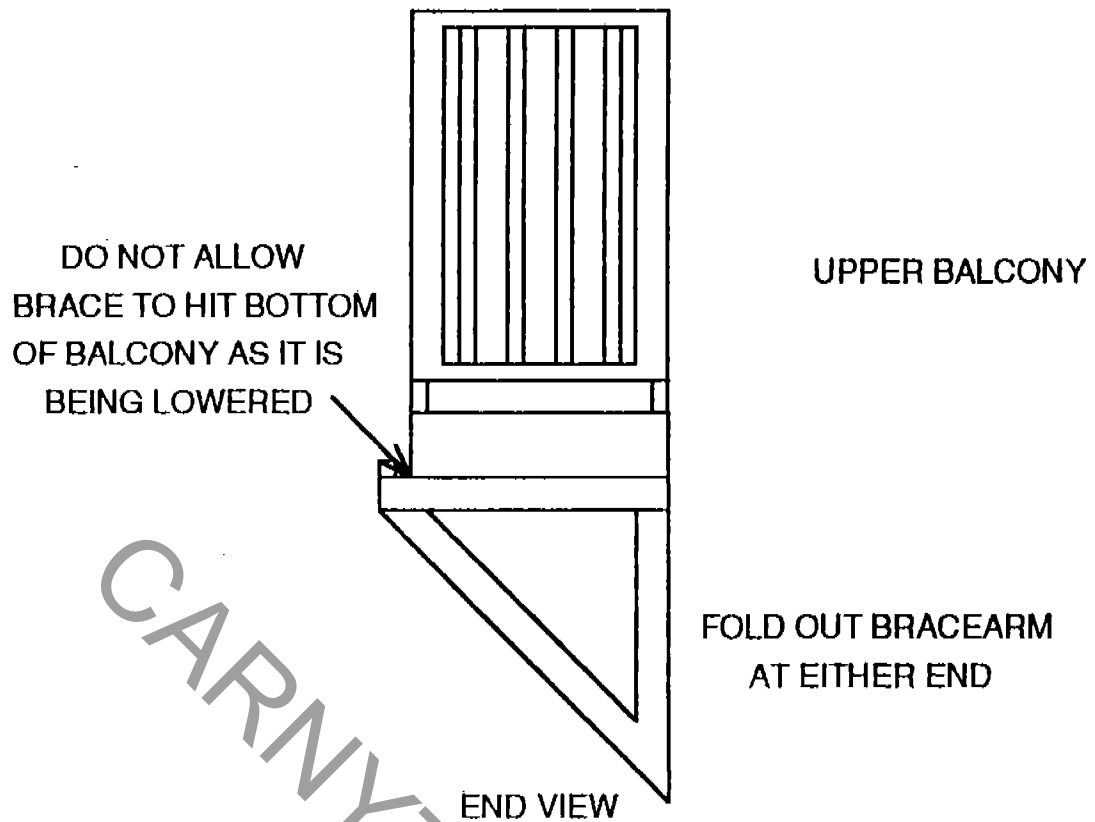
**SEE DIAGRAM BELOW FOR INSTALLING END SCENERY PANEL:**



REAR VIEW  
FRONT DOUBLE FOLD WINGS

**8) RAISING UPPER SCENERY PANELS AT ROOF OF TRAILER.**

**A) LOWER UPPER BALCONY. THE 2 SUPPORT BRACE ARMS MUST BE UNKEYED AND SWUNG OUT 90° FROM THE FACE OF THE TRL. DO NO ATTEMPT TO LOWER UPPER BALCONY WITHOUT THESE SUPPORT ARMS IN POSITION. SEE DIAGRAM BELOW:**



***B) POSITION A PERSON AT EITHER END OF THE BALCONY FROM INSIDE THE TRAILER IN THE STAIR WELLS. REMOVE THE TIE DOWN STRAPS, UNPIN AT EITHER END AND LOWER SLOWLY A FULL 90°. GO SLOW AND DO NOT ALLOW TO CRASH. WHEN DOWN CHECK TO MAKE SURE THE BALCONY IS RESTING PROPERLY AND SECURELY ONTO UNDERSIDE SUPPORT ARMS. IF NOT, RAISE BALCONY SLIGHTLY AND RE-POSITION. ONCE DOWN, SLIDE BACK IN SUPPORT PINS AND KEY INTO THE OUTWARD POSITION.***

***C) LADDER IS BUILT INTO THE TRAILER FOR EASY ROOF ACCESS. FROM ON TOP OF THE ROOF, UNPIN AND RAISE CENTER ROOF***

PANEL. ONCE UP, RAISE THE NOW EXPOSED TRIANGULAR INTERNAL PANELS AND PIN TO BACKSIDE OF CENTER ROOF WING (THIS WING HAS THE LARGE DIAMOND SHAPED PLASTIC BLOCK PANEL).

D) RAISE WING TO THE RIGHT OF THE CENTER NEXT. UNPIN 2 PLCS, RAISE 90° AND INSTALL DIAGONAL BRACE ARM ACCORDING TO WELDED NUMBER. KEY BOTH ENDS OF BRACE ARM AT ALL TIMES. UNKEY END WING AND SWING AROUND 180° AND INSTALL BRACE ARMS NUMBERED ACCORDINGLY. RAISE THE NOW EXPOSED END WING AND PIN.

E) UNPIN AND RAISE WING TO THE LEFT OF CENTER. THIS PANEL IS SEMI-ATTACHED TO THE CENTER PANEL AND HAS ITS OWN CORRESPONDINGLY NUMBERED DIAGONAL BRACE. RAISE UP AND PIN THE NOW LAST EXPOSED TRIANGULAR PANEL. THIS COMPLETES BOTH STAIRWELLS.

F) RAISE UP LAST UPPER PANEL AND SECURE WITH THE PROPER BRACE ARM AND KEY AT BOTH ENDS. UNKEY AND SWING OUT LAST END WING 180° AND SECURE WITH THE APPROPRIATE BRACE ARMS.

G) PLUG IN RUNNING LIGHT PIGTAILS 3 PLACES ON UPPER TOP OF PANELS.

H) INSERT AND INSTALL RED HANDRAIL INTO THE UPPER BALCONY ON THE WING SIDE. USE A 5/16 SNAPPER PIN AT EITHER END TO SECURE.

I) INSTALL ALUMINUM COVERS OVER STAIRWELL OPENINGS MARKED 'A' AND 'B'. KEY 4 PLCS. EACH.

J) INSTALL OVERHEAD LIGHTS AND FLAGS. REMOVE THE 5

OVERHEAD 500 WATT FIXTURES FROM STORAGE AREA OVER THE BARREL AND PLACE ONTO THE ROOF OF TRL. WITH AID OF LADDER INSERT FIXTURE OVER THE 3/4 SQUARE BAR SPACED APPROX. EVERY 8'. INSERT 10' FLAG ONTO THE 3/4" ROD ATTACHED TO EACH LIGHT BRACKET. THE TOP IS NOW COMPLETE.

K) UNLACE TENT TOP WHICH IS FOLDED ON TOP OF THE ROOF. PULL DOWN ONTO BACK ROOM BEAMS AND SPREAD OUT OVER BACK ROOM BLDG. CORNERS. TIE DOWN AROUND PERIMETER WITH ROPE AND SNAP WHERE REQUIRED.

9) FINISH RIDE FRONT

- A) INSTALL OVERHEAD TRUSS LIGHT FIXTURE OVER DOORS AT GOOSE NECK OF TRL. INSERT KEY SLOTS ON FIXTURE TO PEGS AND HANG. PIN RIGHT HAND LOWER SIDE WITH 5/16 SNAPPER PIN.
- B) ASSEMBLE 'ENTER' SIDE. LAY ENTER TRUSS AND THE 2 COLUMN TRUSSES FLAT ONTO THE GROUND AND BOLT TOGETHER WITH 1/2" NUTS AND BOLTS. STAND VERTICALLY AND WITH ENTRANCE DECK RAISED SLIGHTLY, SLIDE STRUCTURE UNDER THE ENTRANCE PLATFORM. NOW LOWER DECK ONTO TRUSS 'FEET'. WEIGHT OF PLATFORM WILL HOLD DOWN TRUSS. SHIM AND LEVEL AND LEVEL PROPERLY. A BRACE ARM IS PROVIDED TO SECURE THE TOWER TO THE TRAILER FOR STABILITY. KEY BOTH ENDS WHEN IN USE.
- C) INSERT THE 2 RED ENTRANCE HANDRAILS INTO POCKETS ON BOTH SIDES OF THE ENTRANCE PLATFORM.
- D) INSTALL BY SNAPPING ON THE 3 FRONT BALLY CLOTHS. 1 PIECE

*GOES UNDER THE LOWER BALCONY. 1 PIECE GOES OVER THE TRAILER WHEEL WELL. 1 PIECE GOES AROUND THE RIGHT HAND SIDE OF THE RIDE FRONT UNDER THE FOLD OUT WINGS TO COMPLETE.*

*E) WITH AID OF A LADDER REMOVE THE FOAM PROTECTIVE BOX WHICH PROTECTS THE MIRROR BALL. UNHOOK THE 2 TIE DOWN STRAPS AND REMOVE COVER. MIRROR BALL MAY NOW REVOLVE UNDER POWER WHEN REQUIRED. MIRROR BALL IS LOCATED IN THE ROCKER ROOM AT THE CEILING.*

#### *RIDE START - UP*

- 1) CLEAN RIDE THOROUGHLY BEFORE START-UP.*
- 2) BEFORE OPENING INSPECT ALL ELECTRICAL CONNECTIONS, PINS, KEYS AND ALL BLOCKING AND SHORING.*
- 3) CHECK WATER LEVEL IN BATTERY, BATTERY POSTS- REMOVE CORROSION AND TIGHTEN BATTERY CABLES IF NECESSARY.*

#### *CONTROL ROOM*

- 1) ACCESS IS GAINED THROUGH DOOR WHICH IS LOCATED AT FRONT OF RIDE AT THE RIGHT SIDE OF THE ROCKER ROOM.*
- 2) THE CONTROL ROOM CONSISTS OF THE FOLLOWING COMPONENTS:*
  - A) 100 AMP MAIN DISCONNECT*
  - B) LOAD CENTER ALL BREAKERS*
  - C) MOTOR STARTERS (4)*
  - D) SAFETY SYSTEM*

- E) BATTERY CHARGERS (5)**
- F) TRACE INVERTERS (2)**
- G) AUDIO/VIDEO CONSOLE**
- H) RACK OF 3 EA. 13" TV MONITORS**

**RIDE OPENING SEQUENCE AND START PROCEDURE ORDER**

- 1) UTILITY POWER ON (GENERATOR ETC.) 220 V SINGLE PHASE  
80 AMP SERVICE MINIMUM.**
  - 2) MAIN DISCONNECT ON**
  - 3) ALL REQUIRED CIRCUIT BREAKERS ON. NOTE: SOME BREAKERS  
MAY BE LEFT OFF DURING DAYLIGHT OPERATION. NOTE: ALL 5  
BATTERY CHARGERS MUST BE ON AT ALL TIMES DURING NORMAL  
OPERATION.**
  - 4) BREAKER WHICH FEEDS COIL TO ALL MOTOR STARTERS MUST  
BE ON FOR ANY MOTORIZED DEVICE TO FUNCTION.**
  - 5) ASSUME BATTERY IS IN GOOD CONDITION:  
HOLD DOWN BOTH PUSH TO TEST BUTTONS AND START EITHER  
AND BOTH TRACE INVERTERS. WHEN TEST LIGHT GLOWS  
COMPLETELY, 110 V CONDITIONED POWER IS NOW AVAILABLE.**
  - 6) ASSUME SAFETY SYSTEM IS NOT 'ENGAGED' AND TURN ON ALL  
BREAKERS WHICH FEED AUDIO/VISUAL CONSOLE AND ALL 7 TV'S.  
NOTE: THESE BREAKERS ARE LOCATED INDEPENDENTLY OF THE  
MAIN LOAD CENTER.**
  - 7) TURN ON ANY TV DESIRED. TURN ON MANUALLY OR A REMOTE  
MAY BE USED. AT CONSOLE TURN ON BOTH AMPLIFIERS. TURN ON  
VCR'S/INSERT TAPE/PUSH PLAY/CUE IF NECESSARY**
- NOTE: TOP FRONT OF CONSOLE HAS A B SWITCHES. PROPER MODE**

**REQUIRES THAT ALL A'S BE 'IN' OR ALL B'S BE 'IN'. ADJUST VOLUME AT THE AMPLIFIERS. ONE AMPLIFIER FEEDS FRONT SPEAKERS AND THE OTHER AMPLIFIER FEEDS THE REAR, INTERNAL SPEAKER ARRAY.**

**USE TAPE REWINDER PROVIDED.**

**8) SAFETY SYSTEM: SEE PROVIDED MANUAL ON THIS SYSTEM**

**9) NOTE: WITHOUT A GOOD SOURCE OF 12V DC YOUR RIDE WILL NOT RUN.**

**10) FROM ENTRANCE AREA (LEFT SIDE FACING FRONT) CONTROL STATION FOR ALL MOTORIZED DEVICES.**

**1) TURNTABLES            ON   OFF**

**2) ROCKER ROOM        ON   OFF**

**3) MOVING STAIRS      ON   OFF**

**4) BARREL                ON   OFF**

**5) ALL STOP**

**6) EMERGENCY LIGHTS ON   OFF**

**NOTE: ALL 12 V DC WILL AUTOMATICALLY BE SHUT OFF WHEN RIDE IS FOLDED UP THEREFORE NOT DRAINING THE BATTERY DURING STORAGE PERIODS.**

**FUN HOUSE OPERATION**

**ALL STANDARD INDUSTRY SAFETY AND NORMAL OPERATIONAL RULES APPLY.**

**2 OPERATORS REQUIRED AT ALL TIMES.**

**OPERATOR #1 LOCATED AT THE ENTRANCE, TAKES TICKETS, SCREENS ALL PATRONS AND HAS IMMEDIATE ACCESS TO THE CONTROL PANEL AND CONTROL FOR OPERATING THE AUDIO/VISUAL COMPONENTS. MAY ALSO OPERATE THE MANUAL CONTROLS FOR AIR JETS.**

**OPERATOR #2 LOCATED AT BARREL ON EITHER SIDE. ALLOWS NO HANDSTANDS IN BARREL. IF A RIDER GOES 'DOWN' IN THE BARREL THE BARREL GOES OFF AND IS NOT RESTARTED UNTIL THE BARREL IS EMPTIED. ALSO GUARDS EXIT AND ASSISTS ALL PATRONS THROUGH THE REAR ROLLERS. PATRONS MUST USE HANDRAILS IN THIS AREA. THIS OPERATOR MAY ALSO OPERATE THE AIR JETS IF REQUIRED. AIR JET TRIGGER MAY BE PLACED AT EITHER STATION.**

**GENERAL MAINTENANCE AND UPKEEP**

**RECOMMENDED LUBRICANTS AND CLEANERS:**

**WD-40**

**GREASE GUN W/ GEN PURPOSE GREASE**

**90 WT GEAR OIL**

**STAINLESS STEEL CLEANER**

**ACRYLIC PLASTIC CLEANER**

**LIQUID SOAP TIDE**

**SPRAY BELT DRESSING**

**SIMPLE GREEN**

**CHAIN LUBE**

**DISTILLED WATER FOR BATTERY**

**RECOMMENDED MECHANICAL MAINTENANCE**

**ROCKER ROOM: VISUAL INSPECTION DAILY**

**CHECK TIGHTNESS OF ALL HDW WEEKLY**

**CHECK GEAR BOX OIL LEVEL MONTHLY**

**MOVING STAIRS: WITH GREASE GUN, GREASE GUIDE WHEELS (8 EA.)**

**TWICE PER YEAR**

**VISUALLY INSPECT DRIVE DAILY**

**CHECK ALL HDW. WEEKLY**

**CHECK GEAR BOX OIL MONTHLY**

**AIR COMPRESSOR: KEEP OUTPUT PRESSURE @ 90 PSI MAX.**

**DRAIN WATER FROM TANK DAILY**

**CHECK OIL LEVEL WEEKLY**

**VISUALLY INSPECT UPON EACH SET UP FOR**

**BELT TENSION AND ALL PROPER CONNECTIONS.**

**NOTE: DO NOT OVER RUN OR OVER USE COMPRESSOR.**

**USE ONLY NON-DETERGENT OR COMPRESSOR OIL. DO**

**NOT ALLOW COMPRESSOR TO OVERHEAT.**

**TURNTABLES (3) : DISASSEMBLE AND GREASE BEARING ONCE PER YEAR. KEEP CLEAN. DO NOT ALLOW SURFACE TO BECOME SLIPPERY. EACH MOTOR IS FUSED INDEPENDENTLY WHERE IT IS PLUGGED IN.**

**BARREL: CLEAN PERIODICALLY AND WAX WITH A MOP AND GLOW TYPE HOUSEHOLD PRODUCT. KEEP DRIVE CHAIN AT PROPER TENSION AND LUBED. CHECK SPROCKET AND FASTNERS AT GEAR BOX WEEKLY. DRIVE CHAIN CAN COME OFF DURING TRANSPORT. KEEP TIRE PRESSURE A 30 OR 40 PSI. REMOVE ALL DRIVE AND IDLER TIRES (6) AND GREASE ALL BEARINGS ONCE PER YEAR. REMOVE, INSPECT AND AIR IF NECESSARY BOTH GUIDE TIRES ONCE PER MONTH. DO NOT OVER ADJUST WHEN RE-INSTALLING AS EXCESSIVE PRESSURE AGAINST BARREL WILL DAMAGE AXLE AND BEARING.**

**WINCH: INSPECT NYLON WINCH STRAPS WEEKLY ALTHOUGH THEY SHOULD LAST MANY YEARS. CHECK GEAR BOX ONCE PER YEAR FOR PROPER OIL LEVEL AND GREASE THE 6 PILLOW BLOCK BEARINGS TWICE PER YEAR. DO NOT ALLOW LOW VOLTAGE AT GEAR BOX MOTOR AS SERIOUS DAMAGE MAY RESULT. KEEP PROPER TENSION ON DRIVE BELT FOR PROPER PERFORMANCE.**

**ROLLERS:** ALL ROLLERS SHOULD BE INSPECTED WEEKLY FOR PROPER PERFORMANCE. STUCK ROLLERS SHOULD BE FREED OR REPLACED IMMEDIATELY. KEEP PROPERLY ALIGNED AND SEATED AND SPRAY ENDS WEEKLY WITH WD-40.

**PUNCHING BAGS (2) :** CLEAN WITH SOAP AND WATER PERIODICALLY. INSPECT ALL HDW. WEEKLY. REPLACE ANY WORN COMPONENT OR SCREW PIN SHACKLE IMMEDIATELY.

**BATTERY:** 1,150 AMP 12 V DC  
INSPECT WEEKLY. KEEP ALL CONNECTIONS TIGHT AND FREE FROM CORROSION. CHECK WATER LEVEL WEEKLY. ONLY FILL WITH DISTILLED WATER OR ACTUAL BATTERY FLUID. REPLACE BATTERY IF ANY CELL APPEARS TO BE WEAK. CAUTION WHEN RECONNECTING INVERTER LEADS AS A 1000 AMPS OR BETTER MAY BE PRESENT. NOTE: IF FOR ANY REASON THE MAIN LEADS FROM THE BATTERY TO THE INVERTERS HAVE TO BE REMOVED AND THEN RECONNECTED, TO RE-START INVERTERS, PUSH START BUTTON TWICE.

**RECOMMENDED TOOLS**

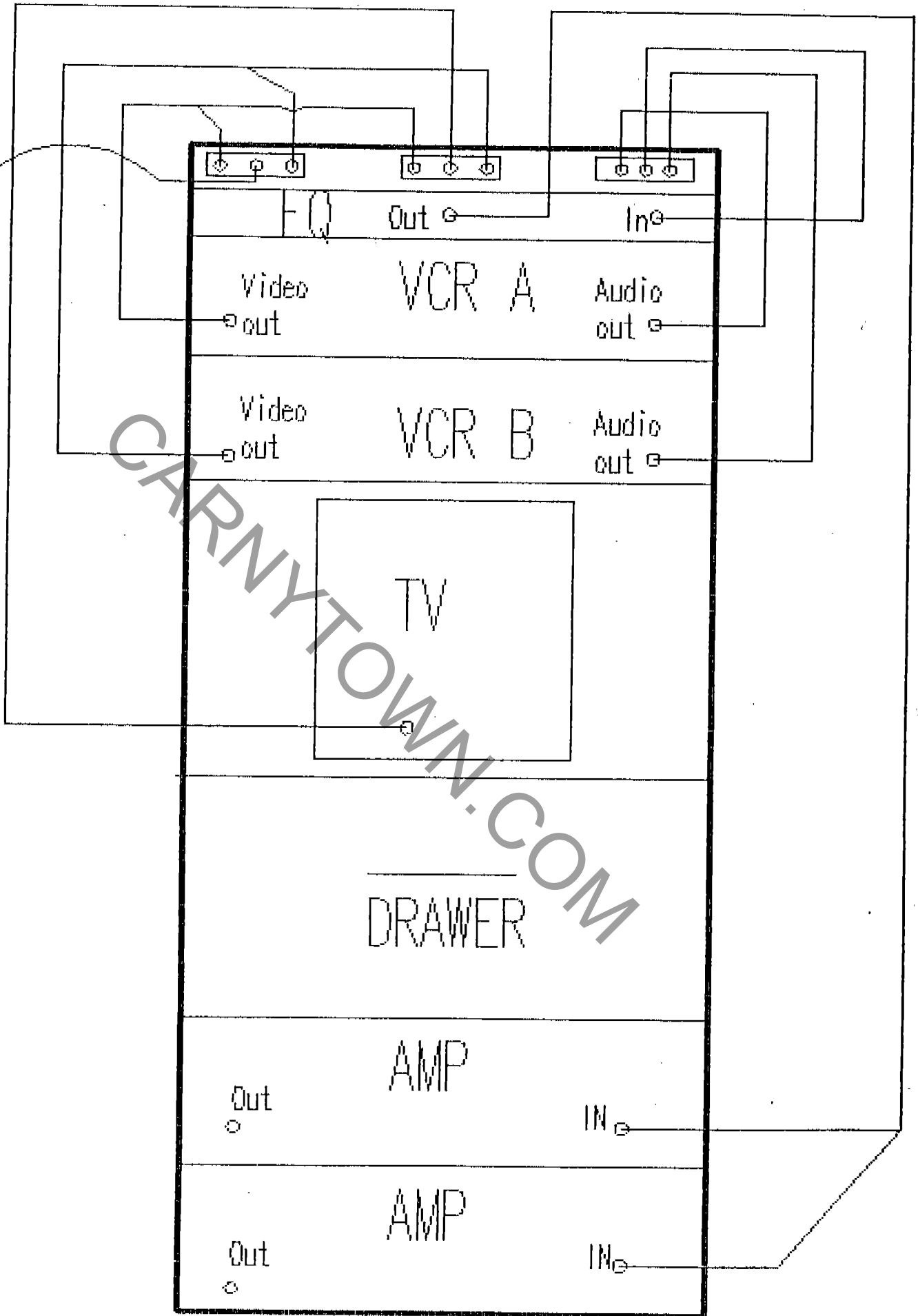
- 1) **6' STEP LADDER**
- 2) **SMALL HAMMER**
- 3) **8" CRESCENT WRENCH**
- 4) **ALLEN WRENCH SET**
- 5) **VARIOUS SMALL HAND TOOLS**
- 6) **CLEANING TOOLS SCRUB BRUSH , BUCKET ETC.**

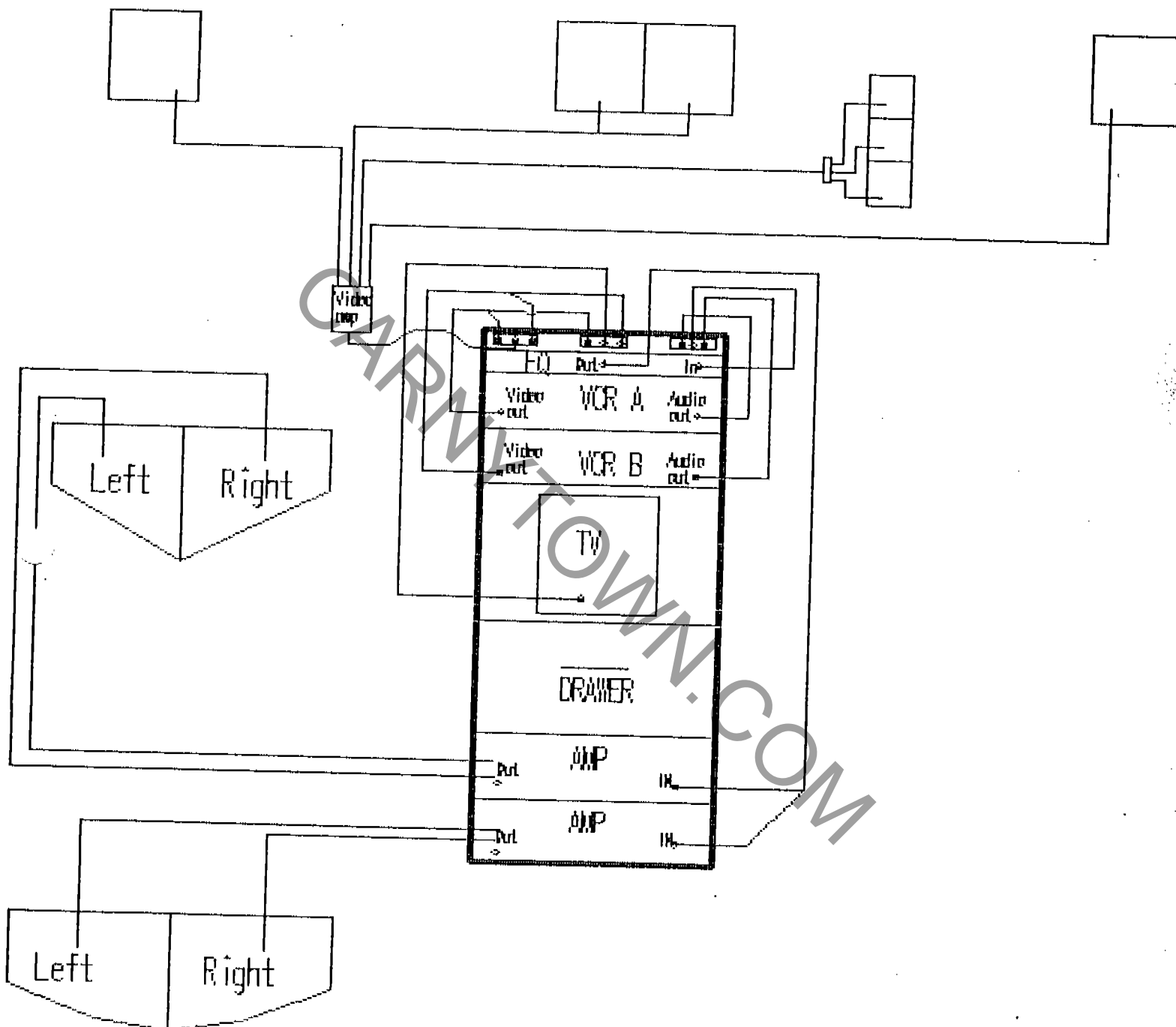
**SPARE PARTS**

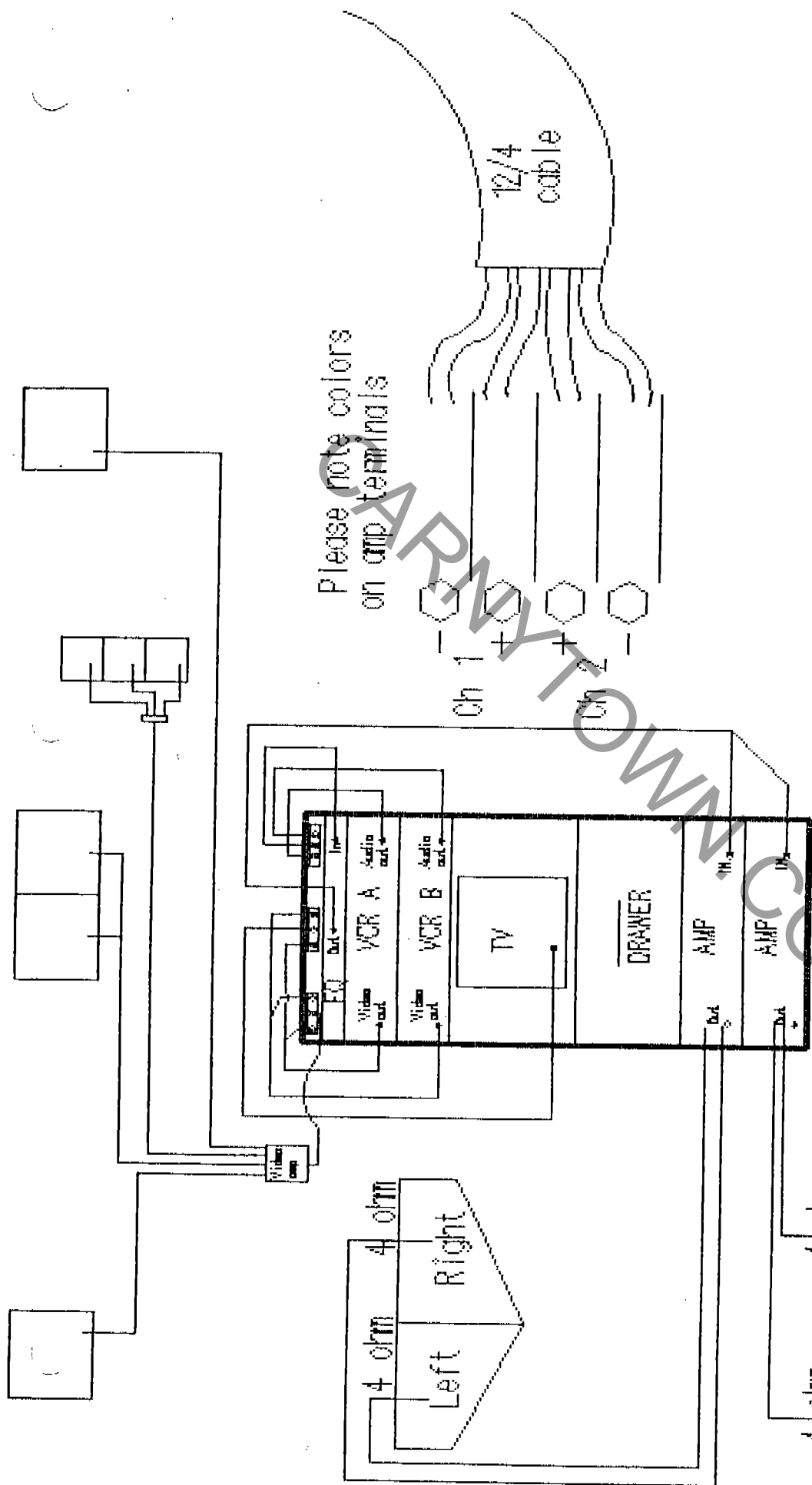
- 1) **SPARE FUSES 1 AND 5 AMP FUSES 20 AMP SCREW IN FOR TURNTABLES**
- 2) **SPARE STROBE BULB**
- 3) **SPARE BULBS 11 S 14 VARIOUS COLORS**
- 4) **NEON BALLAST**
- 5) **LOW VOLTAGE SPOT LIGHT BULBS**
- 6) **500 WATT QUARTZ BULB**
- 7) **BATTERIES FOR REMOTE CONTROLS**
- 8) **ADDTL VIDEO TAPES**
- 9) **SPARE HEATERS FOR MOTOR STARTERS**

**NOTE: READ AND STUDY PROVIDED OWNERS MANUAL ON THE 2 TRACE INVERTERS.**

Video  
amp







Amps are set for two channel output with mono input to each amp driving both A & B at the same time. Each Channel A or B is able to run no less than 4 ohms per channel. Zero (0) = a dead short! A 2 ohm load can be run in an emergency only and for a short time at lower volumes. It is very hard on the amp!!!

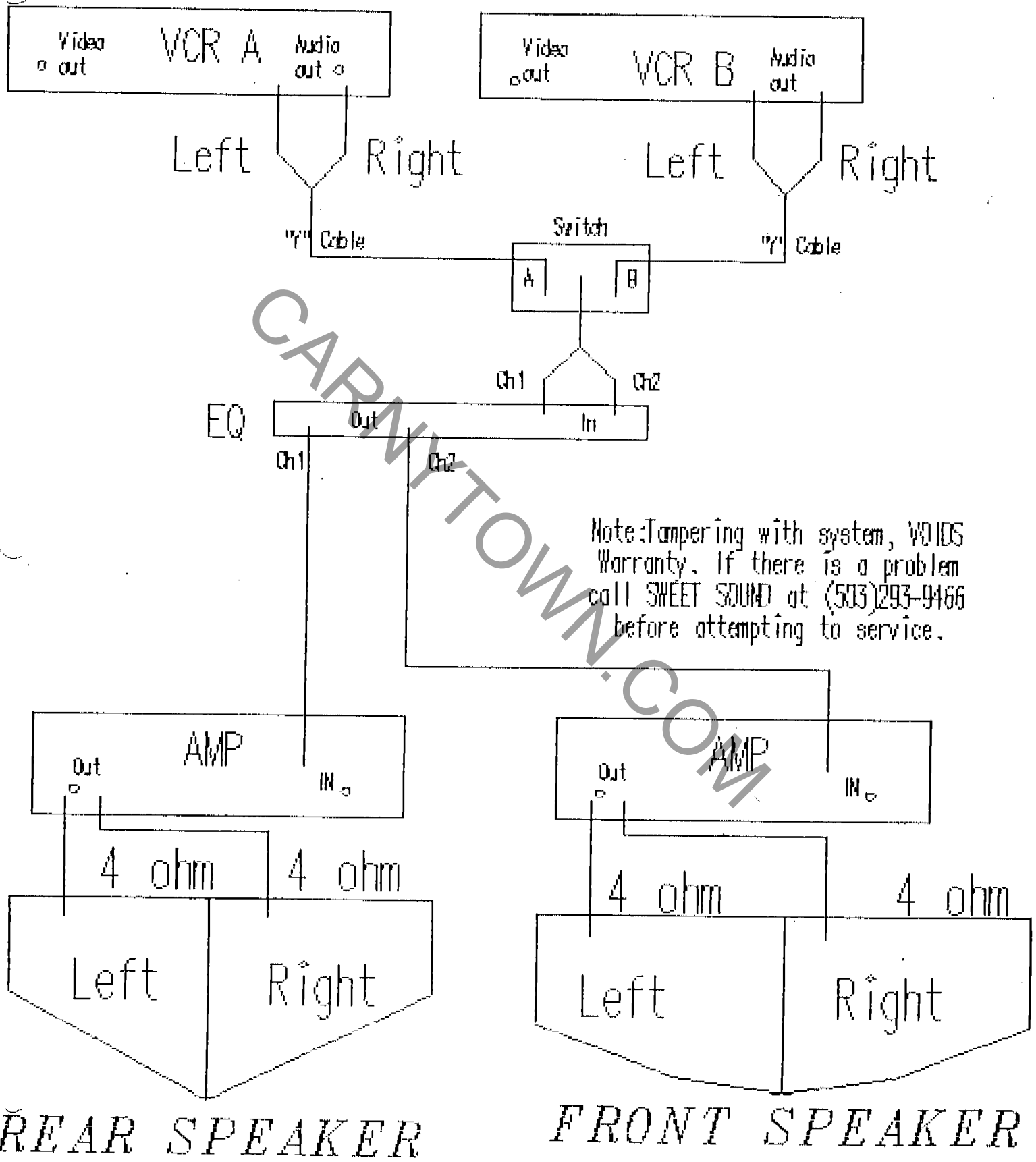
# **ATTENTION!!**

## **SOUND SYSTEM MAINTENANCE AND USE**

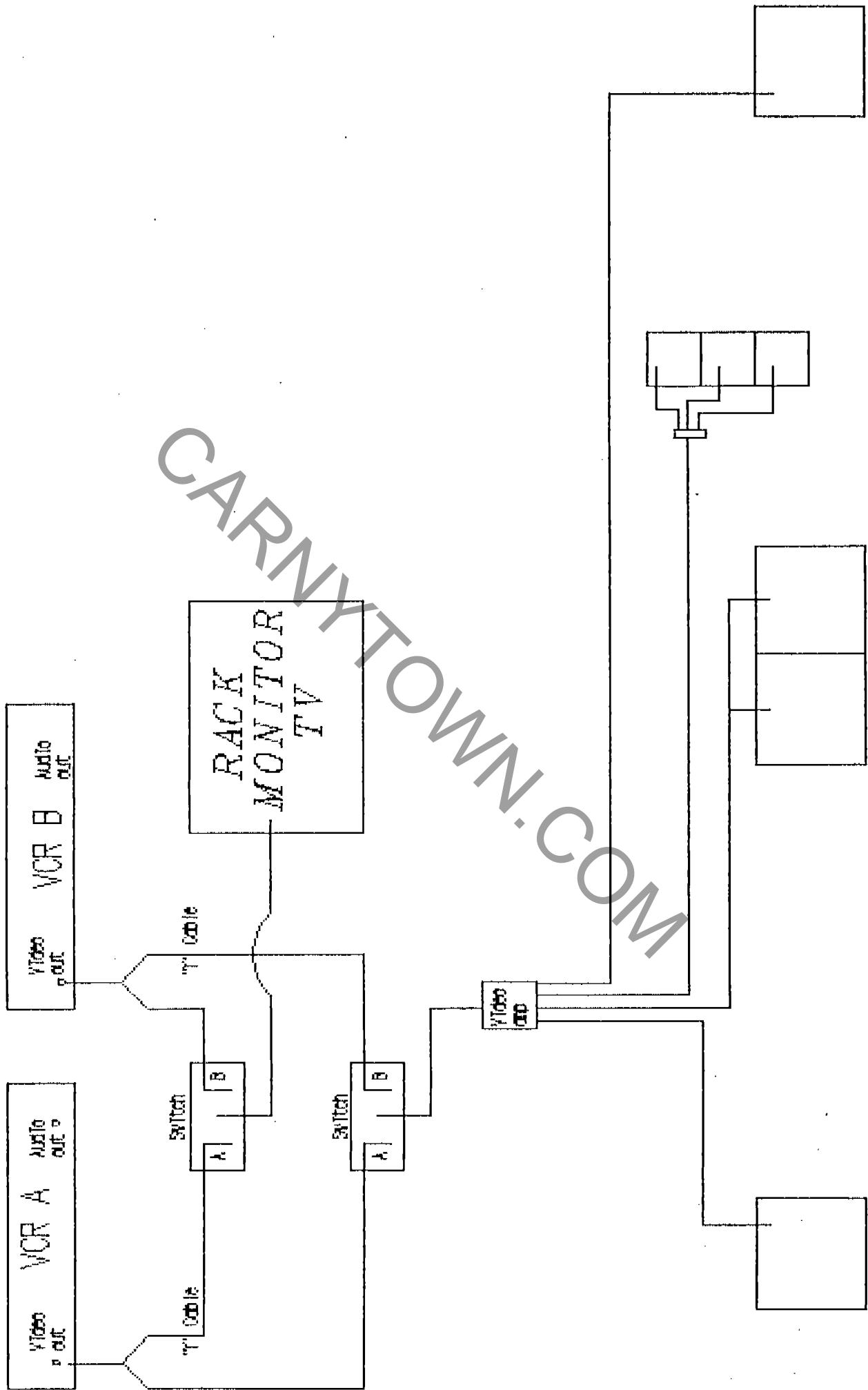
- 1) DO NOT PUT DIRTY OR WET TAPES IN THE VCR.  
**DAMAGE WILL OCCUR.**
- 2) ADJUSTMENT OF VOLUME
  - A) ALL TAPES ARE RECORDED AT DIFFERENT LEVELS.
  - B) ANYTIME A TAPE IS INSERTED YOU MUST ADJUST THE VOLUME ACCORDING TO THE TAPE. THIS LEVEL MUST **NOT** EXCEED THE LAST YELLOW CLIP LIGHT.

**NOTE: THE FIRST RED LIGHT MEANS DAMAGE TO BOTH OF THE AMPLIFIERS AND SPEAKERS.**

# SOUND SYSTEM FLOW CHART



# VIDEO OUTPUT FLOW



CARNYKTOWN.COM

Mike - Updown -  
- 20K -

# ASHLY

## SPECIFICATIONS

	FTX-1000	FTX-1500 CFT-1800	FTX-2000
<b>Output Power</b> EIA Spec.			
(+1dB < 1% THD 20Hz-20KHz) Stereo (Rated Per Channel):	190 Watts RMS	300 Watts RMS	675 Watts RMS
2 Chms			500 Watts RMS
4 Chms	120 Watts RMS	200 Watts RMS	300 Watts RMS
8 Chms			
<b>Mono Bridged:</b>			
4 Chms	380 Watts RMS	600 Watts RMS	1350 Watts RMS
8 Chms			1000 Watts RMS
<b>FTC Spec.</b> (min power < .01% SMPTE IMD @ 8, < .02% SMPTE @ 4)			
Stereo (Rated Per Channel):	160 Watts RMS	275 Watts RMS	400 Watts RMS
4 Chms			
8 Chms	100 Watts RMS	175 Watts RMS	250 Watts RMS
<b>Mono Bridged:</b>			
8 Chms	320 Watts RMS	550 Watts RMS	800 Watts RMS
<b>Total Harmonic Distortion (8Ω)</b>			
.007% 1KHz	.007% 1KHz	.007% 1KHz	.007% 1KHz
.01% 20Hz	.01% 20Hz	.01% 20Hz	.01% 20Hz
.05% 20Hz-20KHz	.05% 20Hz-20KHz	.05% 20Hz-20KHz	.05% 20Hz-20KHz
<b>IM Distortion 8Ω (SMPTE) (IHF)</b>			
.007%	.007%	.007%	.007%
.01%	.01%	.01%	.01%
<b>Damping Factor</b>	>250 20Hz-1KHz	>250 20Hz-1KHz	>250 20Hz-1KHz
<b>Bandwidth</b>	100KHz	100KHz	100KHz
<b>Slew Rate</b>	40V/μS	40V/μS	50V/μS
<b>Frequency Response</b>	±.2dB 20Hz-20KHz	±.2dB 20Hz-20KHz	±.2dB 20Hz-20KHz
<b>Full Power Input Sensitivity</b>	1.1V	1.3V	1.7V
<b>Hum and Noise</b>	>100dB below full output	>100dB below full output	>105dB below full output
<b>Power Requirement</b>	760 W Max, 100W Idle	1200 W Max, 160W Idle	1800 W Max, 220W Idle
(20Hz-20KHz unweighted)	120VAC 50-60Hz	120VAC 50-60Hz	120VAC 50-60Hz
	(240V available)	(240V available)	(240V available)
<b>Shipping Weight</b>	42 lbs.	47 lbs.	65 lbs.
<b>Size</b>	19"Wx3.5"Hx17.8"D	19"Wx3.5"Hx17.8"D	19"Wx5.25"Hx17.8"D

## owner's manual

**FTX-SERIES  
CFT-SERIES  
MOSFET POWER AMPLIFIERS**

**ASHLY AUDIO, INC.**  
100 FERNWOOD AVENUE  
ROCHESTER, NEW YORK 14621 USA  
Phone (716) 544-5191 (in New York State)  
Toll Free (800) 828-6308 within United States