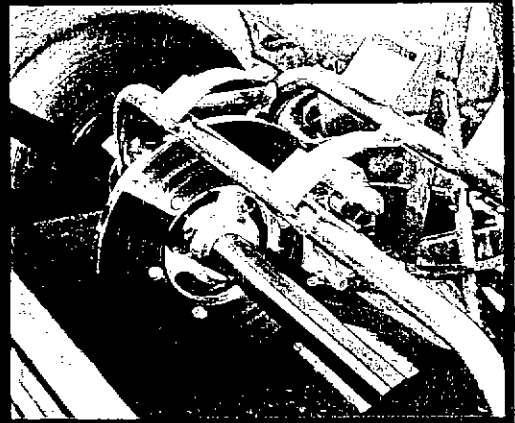
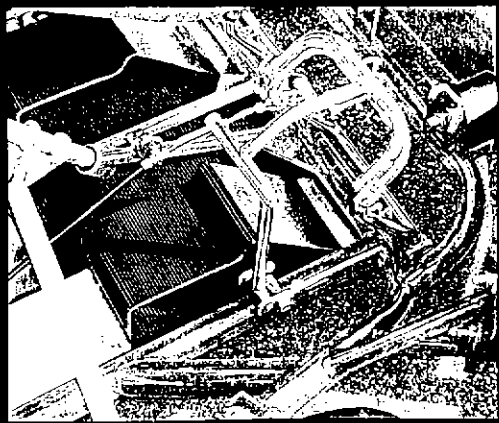
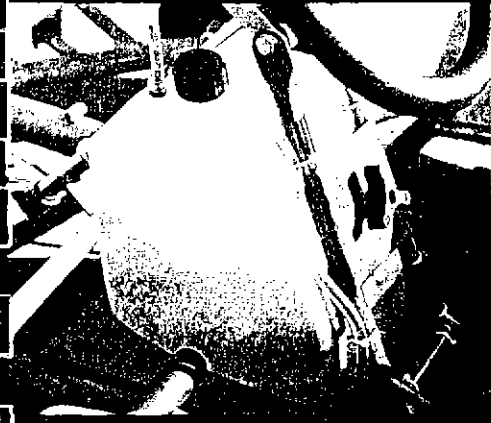
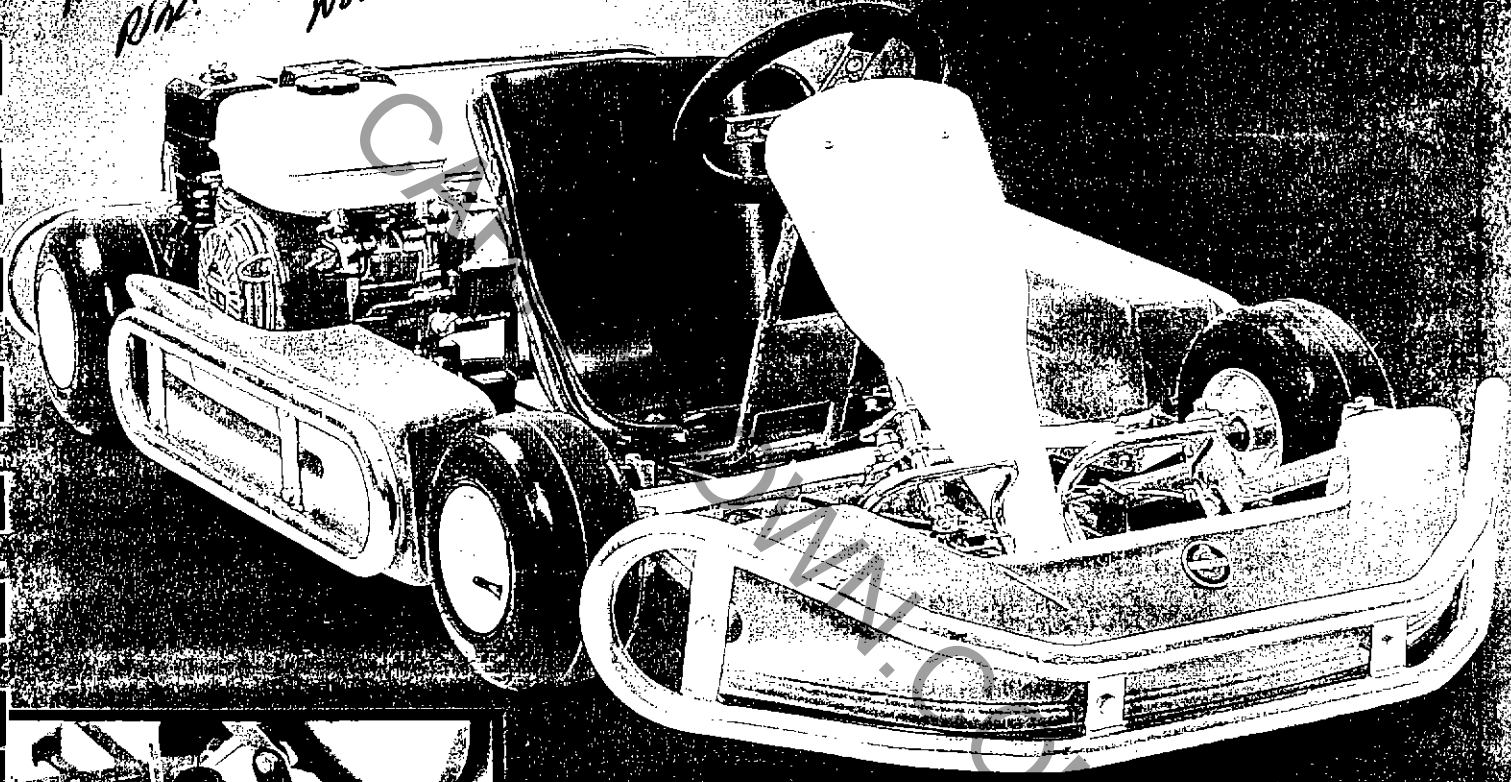


# DART 2

Italia Motors  
Go Kart Dart 2000  
Non Kiddie

## INDOOR & LEISURE KART

*ITALIA MOTORI  
GO-KART  
NON-KIDDIE*

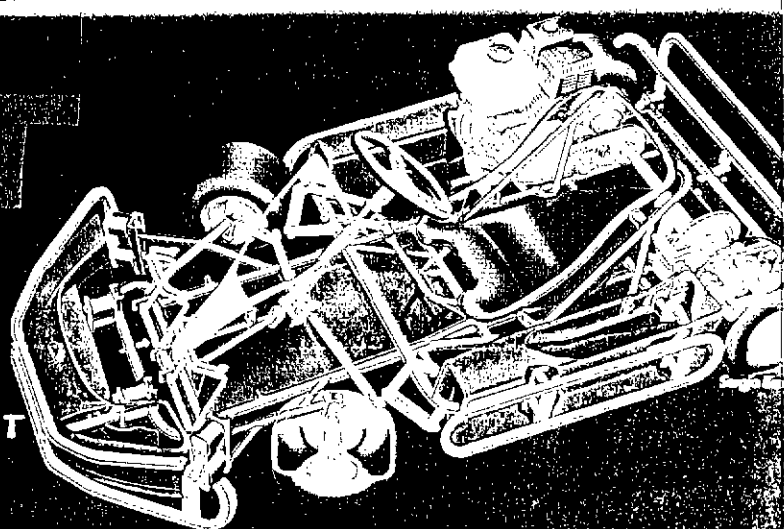


**DUCATI**  
*design*



# DART 2000

INDOOR & LEISURE KART



## SCHEDA TECNICA

<b>Telaio</b>	d 32 mm acciaio cromo-molibdenu
<b>Colore</b>	rosso/nero*/silver*/blu*/giallo*
<b>Assale</b>	d 30 mm acciaio pieno
<b>Pianale</b>	acciaio ricoperto in gomma
<b>Freno</b>	meccanico/idraulico*
<b>Disco freno</b>	pieno/autoventilato*
<b>Sedile</b>	plastica forte spessore/imbottito*
<b>Cerchi</b>	lega speciale di alluminio
<b>Fuselli</b>	acciaio rinforzato
<b>Piantone sterzo</b>	montato su silent block
<b>Volante</b>	alluminio
<b>Barretta sterzo</b>	nylon flessibile
<b>Pedali</b>	adattabili ad ogni misura
<b>Spoiler</b>	plastica rossa/gialla/blu/nera/bianca
<b>Carenature</b>	plastica morbida rossa/gialla/blu/nera/bianca
<b>Paraurti</b>	acciaio cromo-molibdenu
<b>Motore</b>	Honda RH 160/200*/240*/270*
<b>Frizione</b>	a bagno d'olio
<b>Trasmissione</b>	1/2" catena/cinghia*
<b>Alimentazione</b>	benzina/GPL*/elettrica*

\*optional

## TECHNICAL FILE

<b>Chassis</b>	d 32 mm chrome-molybdenum steel
<b>Colours</b>	red/black*/silver*/blue*/yellow*
<b>Axle</b>	d 30 mm solid steel
<b>Floor tray</b>	steel covered with rubber
<b>Brake</b>	mechanic/hydraulic*
<b>Brake disc</b>	solid steel/self ventilating*
<b>Seat</b>	thick plastic/upholstered*
<b>Wheels</b>	special aluminium alloy
<b>Stub axle</b>	reinforced steel
<b>Steering column</b>	solid on silent blocks
<b>Steering wheel</b>	aluminium
<b>Track rods</b>	flexible nylon
<b>Pedals</b>	fit all sizes
<b>Spoiler</b>	plastic red/yellow/blue/black/white
<b>Side fairings</b>	soft plastic red/yellow/blue/black/white
<b>Bumpers</b>	chrome-molybdenum steel
<b>Engine</b>	Honda RH 160/200*/240*/270*
<b>Clutch</b>	oil bath
<b>Transmission</b>	1/2" chain/toothed belt*
<b>Feed</b>	petrol/propane*/electric*

\*optional

## FICHE TECHNIQUE

<b>Cadre</b>	d 32 mm acier au chrome-molybdène
<b>Couleur</b>	rouge/noir*/silver*/bleu*/jaune*
<b>Axe</b>	d 30 mm solide
<b>Plancher</b>	acier reveté en caoutchouc
<b>Frein</b>	meccanico/idraulico*
<b>Disc de frein</b>	solide/autoventilé*
<b>Siège</b>	plastique très épais/capitonné
<b>Jantes</b>	alliage special d'aluminium
<b>Fusée</b>	acier model renforcé
<b>Colonne de direction</b>	solide avec tampons caoutchouc
<b>Volant</b>	aluminium
<b>Barre de direction</b>	nylon deformable
<b>Pédales</b>	pour tout les âges
<b>Spoiler</b>	plastique rouge/jaune/blue/noir/blanc
<b>Carénages</b>	plastique souple rouge/jaune/blue/noir/blanc
<b>Pare-chocs</b>	acier au chrome-molybdène
<b>Moteur</b>	Honda RH 160/200*/240*/270*
<b>Embrayage</b>	à bain d'huile
<b>Transmission</b>	chain 1/2"/courroi cranté*
<b>Alimentation</b>	essence/à gas liquide/electrique

\*optional

## TECHNISCHE KARTEI

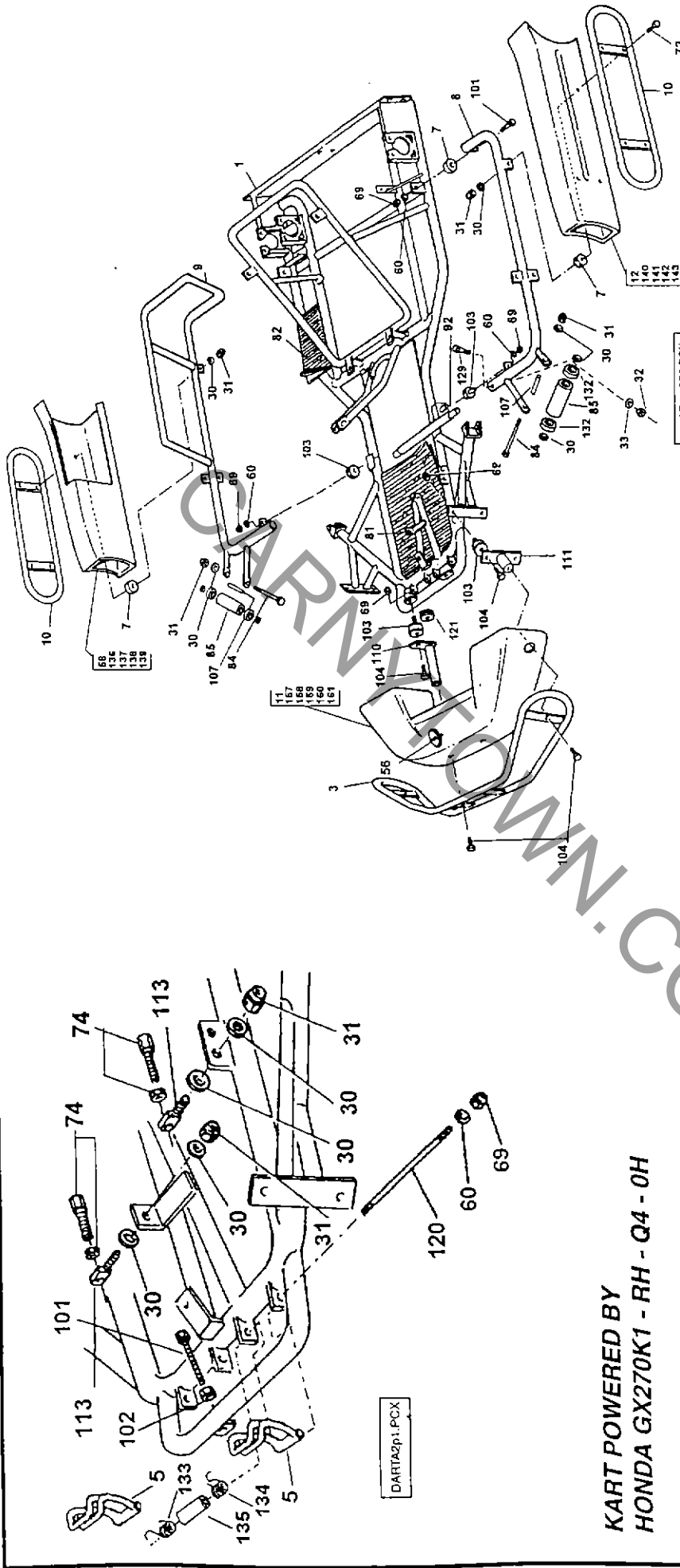
<b>Rahmen</b>	d 32 mm Chrom-Molybdän Stahl
<b>Farbe</b>	Rot/Schwarz*/Silver*/Blau*/Gelb*
<b>Hintenachse</b>	d 30 mm Vollmaterial
<b>Bodenplatte</b>	Stahl mit Gummiauflage
<b>Bremssystem</b>	mechanisch/hydraulisch*
<b>Bremscheibe</b>	massiv/innenbelüfte
<b>Sitz</b>	Plastik/Polster*
<b>Felgen</b>	Aluminiumlegierung
<b>Achsschänkel</b>	Stahl verstärkt
<b>Lenkstange</b>	Vollmaterial auf Gummipuffer gelagert
<b>Lenkrad</b>	Aluminium
<b>Spurstange</b>	Nylon biegsam
<b>Pedal</b>	für jedes Alter
<b>Spoiler</b>	Plastik Rot/Gelb/Blau/Schwarz/Weiss
<b>Seitenkästen</b>	weichen Kunststoff Rot/Gelb/Blau/Schwarz/Weiss
<b>Stoßfängerbügel</b>	Chrom-Molybdän Stahl
<b>Motor</b>	Honda RH 160/200*/240*/270*
<b>Kupplung</b>	Ölbad
<b>Getriebe</b>	Kette 1/2"/Zahnrim*
<b>Antrieb</b>	Benzin/Gas*/Elektro*

\*optional

# ITALIA MOTORI

via settembrini ,3 - 20020 Lainate (mi) - italy - tel. +39.2.9357.1317 / 1199 fax +39.2.9357.2005

Questo disegno è valido per il Kart DART2000 con matricola dal 01015 in poi  
 Ce dessin est valable pour Kart DART2000 avec numero serie souveur a 0  
 This drawing is valable for Kart DART2000 with number higher then 01015



DART2000.PCX

DART2000.PCX

KART POWERED BY  
 HONDA GX270K1 - RH - Q4 - 0H

RIF	CODICE	DESCRIZIONE	RIF	CODICE	DESCRIZIONE	RIF	CODICE	DESCRIZIONE
1	TCRE.002000.B	TELAIO DART2000 N	111	SPRE.000011.B	SUPPORTO LAT. PARAURTI	D54	CARE.58SXNE.B	CARENA DART2000 SX NERA
3	PARE.001015.B	PARAURTI ANTERIORE-SPOLLER	113	SARK.000083068.B	SUPP. REG. CAVO COMANDO	A99	CARE.58SXBL.B	CARENA DART2000 SX BLU
5	PEPE.001037.B	PEDALE DOPPIO	120	PPRE.010450.B	PERNO PEDALE DART2000	139	ACRK.00118A.B	SPOLLER BIANCO
7	TGRE.001050.B	TAMPONE GOMMA D 45 / 10X45	121	TGRE.001060.B	TAMPONE GOMMA D45/10X35	125	ACRK.00118L.B	SPOLLER BLU
8	PLRE.004060.B	PARAURTI LATERALE SX	129	VBVB.F06240.B	VITE TCE 6X40 ZN	A17	ACRK.0011GL.B	SPOLLER GIALLO
9	PLRE.004070.B	PARAURTI LATERALE DX	132	CURK.0000608228	CUSCINETTO FUSELLO	118	ACRK.0011NE.B	SPOLLER NERO
10	TLRE.001081.B	TELAIO LATERALE ESTERNO	133	MORE.221811SB	MOLLA SX RICHIAMO PEDALE	127	ACRK.0011VE.B	SPOLLER VERDE
11	ACRK.0011RO.B	SPOLLER ROSSO	134	MORE.221811DB	MOLLA DX RICHIAMO PEDALE	128		
12	CARE.58SXRO.B	CARENA DART2000 SX ROSSA	135	BPRE.001010.B	BUSSOLA PERNO PEDALE	129		
30	ROVB.F08216.B	HONDELLA BX.16X2 ZN	136	CARE.58DXNE.B	CARENA DART2000 DX NERA			
31	DAVB.F08206.B	DADO AUT. 6MZN	137	CARE.58DXBL.B	CARENA DART2000 DX BLU			
32	DAVB.F08204.B	DADO AUT. 6MZN	138	CARE.58DXBL.B	CARENA DART2000 DX BIANCA			
33	ROVB.F08212.F	HONDELLA 6X12 ZN	139	CARE.58DXGL.B	CARENA DART2000 DX GIALLA			
56	STRM.000010.B	PLACCA SMALTATA	140	CARE.58SXBL.B	CARENA DART2000 SX BIANCA			
58	CARE.58DXRO.B	CARENA DART2000 DX ROSSA	141	CARE.58SXGL.B	CARENA DART2000 SX GIALLA			
60	ROVB.F10220.B	HONDELLA 10X20 ZN	142	SPRE.000011.B	SUPPORTO LAT. PARAURTI	D54		
69	DAVB.F10208.B	DADO AUT. M10ZN	143	SARK.000083068.B	SUPP. REG. CAVO COMANDO	A99		
72	VBVB.F08270.B	VITE TCE 8X70 ZN	144	PPRE.010450.B	PERNO PEDALE DART2000	139		
74	VRRE.MIND043.B	VITE REGISTRO D.6	145	TGRE.001060.B	TAMPONE GOMMA D45/10X35	125		
81	TGRE.RI03036.B	TAPPETINO 36X30	146	VBVB.F06240.B	VITE TCE 6X40 ZN	A17		
82	TGRE.RI03117.B	TAPPETINO 31X17	147	CURK.0000608228	CUSCINETTO FUSELLO	118		
84	VEVB.F082150B	VITE TE 8X150 ZN	148	MORE.221811DB	MOLLA DX RICHIAMO PEDALE	128		
85	RNRE.001020.B	RULLO RIOTE	149	MORE.221811SB	MOLLA SX RICHIAMO PEDALE	127		
92	TGRE.004010.B	TUBO RACCORDO	150	BPRE.001010.B	BUSSOLA PERNO PEDALE	129		
101	VEVB.F10270.B	VITE TE 10X70 ZN	151	CARE.58DXNE.B	CARENA DART2000 DX NERA			
102	DAVB.F10280.B	DADO BASSO M10 ZN	152	CARE.58DXBL.B	CARENA DART2000 DX BLU			
103	SIFM.104550.B	SILENTBLOCK 45X50X73 MIF	153	CARE.58DXBL.B	CARENA DART2000 DX BIANCA			
104	VEVB.F10220.B	VITE TE 10X20 ZN	154	CARE.58DXGL.B	CARENA DART2000 DX GIALLA			
107	TURE.081212.B	TUBETTO RULLO NYLON N	155	CARE.58SXBL.B	CARENA DART2000 SX BIANCA			
110	SPRE.000010.B	SUPPORTO CENT. PARAURTI	156	CARE.58SXGL.B	CARENA DART2000 SX GIALLA			

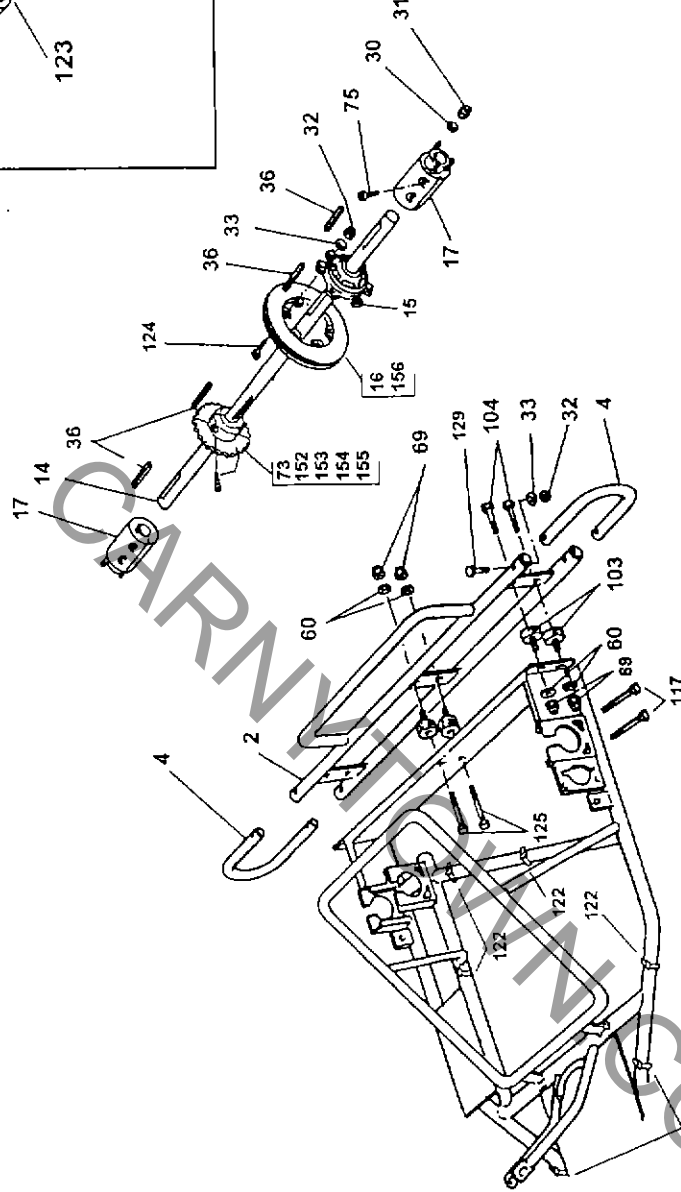
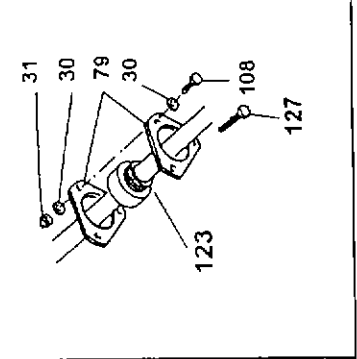
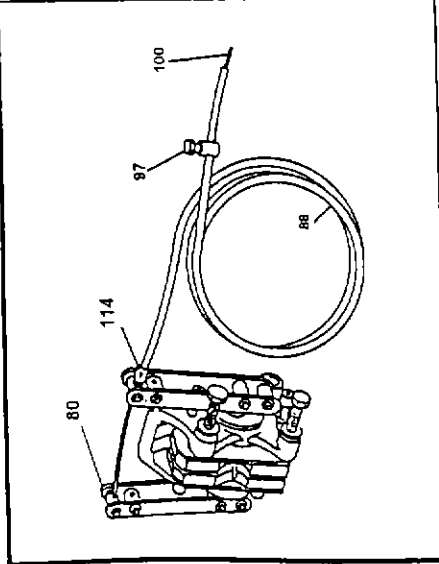




# ITALIA MOTORI

via settembrini, 3 - 20020 Lainate (mi) - italy - tel. +39.2.9357.1317 / 1199 fax +39.2.9357.2005

Questo disegno è valido per il Kart DART2000 con matricola dal 01015 in poi  
 Ce dessin est valable pour Kart DART2000 avec numero serie souveleur a 010  
 This drawing is valid for Kart DART2000 with number lighter then 01015



DARTA - 2P5.PCX

RIF	CODICE	DESCRIZIONE	RIF	CODICE	DESCRIZIONE	RIF	CODICE	DESCRIZIONE
2	PPRE.001001.B	PAPARUTI POSTERIORE DART 2000	97	MORE.MINO23.B	MORSETTO V.T. D.9	H41	VBVB.F06Z20.B	VITE TCE 6X20 ZN
4	LPRE.001020.B	LATERALE PAPARUTI DART 2000	100	CFRE.CR0023.B	CAVO FRIZIONE APE	D84	VBVB.F10Z40.B	VITE TCE 10X40 ZN
14	ASRE.001200.B	ASSALE DART2000	103	SIRM.104550.B	SILENTBLOCK 45X50X73 MF	D15	VEVB.F08Z40.B	VITE TE 8X40 ZN
15	PCRE.001300.B	PORTACORONA DART 2000	104	VEVB.F10Z20.B	VITE TE 10X20 ZN	P19	VBVB.F06Z20.B	VITE TCE 6X40 ZN
16	DVRE.001400.B	DISCO FRENO VENTILATO	108	CARE.MIND04.B	CAPOGUAINA GUAINA D.6	A71	CORK.10106900B	CORONA 30 Z 24
17	MORE.001500.B	MOZZETTO L.120 DART2000	114	CARE.MIND04.B	CAPOGUAINA GUAINA D.6	D12	CORK.10107300B	CORONA 30 Z 28
30	ROVB.F08Z16.B	RONDELLA 8X16X2 ZN	117	VEVB.F10Z100B	VITE TCE 10X100 ZN	P2	CORK.10108100B	CORONA 30 Z 30
31	DAVB.F08Z06.B	DADO AUT. 8/M ZN	122	FNRM.NYL5207B	FASCETTA NYLON 200	D48	DFRE.001400.B	DISCO FRENO RENT. 94
32	DAVB.F06Z04.B	DADO AUT. 6/M ZN	123	FNRM.NYL5210B	FASCETTA NYLON 280			
33	ROVB.F06Z12.B	RONDELLA 6X12 ZN	H35					
36	CHRK200133068B	CHIAVETTA 6X6X60 MOZZ.	D21					
60	ROVB.F10Z20.B	RONDELLA 10X20 ZN	D6					
69	DAVB.F10Z08.B	DADO AUT. M10ZN	D9					
73	CORK.10108500B	CORONA 30 Z 32	D55					
75	VBVB.F08Z35.B	VITE TCE 8X35 ZN	D10					
79	CURE.001010.B	CUSCINETTO POST. BOPP 206	D52					
80	PMRE.00K395.B	PINZA MECCANICA CPL	D23					
88	GURE.GUA004.B	GUAINA D.6						

ARTICLE : KRRE.01015LA1 DART2000/270

CURRENCY : U.S.\$

ITEM	CODE	DESCRIPTION	QUANTITY	PRICE
1	TCRE.002000.B	CHASSIS DART2000	1,000	630,00
2	PPRE.001001.B	REAR BUMPER	1,000	69,33
3	PARE.00101S.B	FRONT BUMPER-SPOILER	1,000	79,91
4	LPRE.001020.B	BACK BUMPER LATERAL U	2,000	8,00
5	PERE.001037.B	PEDAL I19	2,000	31,70
6	VBVB.F10Z50.B	SCREW 10X50 D14	2,000	0,21
7	TGRE.001050.B	RUBBER SPACER D45/10X45 D71	8,000	3,42
8	PLRE.006060.B	LEFT LATERAL BUMPER	1,000	85,33
9	PLRE.006070.B	RIGHT LATERAL BUMPER	1,000	85,33
10	TLRE.001081.B	EXTERNAL LATERAL RENFORCER	2,000	45,67
11	ACRK.0011RO.B	RED SPOILER	1,000	38,12
12	CARE.58SXRO.B	LEFT RED SIDE BOX	1,000	27,88
13	VEVB.F08Z70.B	SCREW 8x70 D5	1,000	0,24
14	ASRE.001200.B	AXLE	1,000	57,06
15	PCRE.001300.B	SPROCKET SUPPORT D86	2,000	20,09
16	DVRE.001400.B	VENTILATED BRAKE DISC D69	1,000	67,12
17	MORE.001500.B	HUB L120 F7	2,000	36,55
18	SMRE.001605.B	ENGINE MONTING H80 DART2000	1,000	65,03
19	CCRE.001700.B	ENGINE BRACKET D3	2,000	9,12
20	FSRE.001810.B	LEFT STUBAXLE 26/48 D78	1,000	32,00
21	FDRE.001810.B	RIGHT STUBAXLE 26/48 D79	1,000	32,00
22	SSRE.002100.B	ROD END BEARING LEFT F49	2,000	11,39
23	SDRE.002000.B	ROD END BEARING RIGHT F50	2,000	11,39
24	TNRE.002300.B	NYLON BRACKET L280 D87	1,000	6,42
25	PSRE.002300.B	STEERING COLUMN D73	1,000	26,27
26	SVRE.002400.B	STEERING WHEEL REST D51	1,000	8,61
27	SPRE.002500.B	STEERING COLUMN MOUNTING D26	1,000	2,55
28	BURE.002600.B	BUSHING MM5 M33	1,000	1,12
29	BURE.002700.B	BUSHING N I40	1,000	1,61
30	ROVB.F08Z16.B	WASHER 8x16x2 P9	61,000	0,03
31	DAVB.F08Z06.B	NUT 8M D8	40,000	0,15
32	DAVB.F06Z04.B	NUT 6M D7	23,000	0,12
33	ROVB.F06Z12.B	WASHER 6x12 H35	34,000	0,06
34	DAVB.F08Z05.B	NUT 8M A132	2,000	0,06
36	CHRK20013306B	KEY 6x6x80 D21	4,000	0,64
40	VBVB.F10Z90.B	SCREW 10Mx90 M27	2,000	0,88
41	BGRK20006506B	BUSHING M12	4,000	1,48
42	FDRE.001810DB	SPACER 10x14x32 T52	2,000	1,79
43	DIRK20109806B	SPACER 8x20x5,5 F35	2,000	1,48
44	CURK006000ZZB	BEARING 10x26 P8	4,000	2,06
45	CURK0060003ZB	BEARING I17	4,000	6,58
46	DAVB.F14Z10.B	NUT M14 P10	2,000	0,82
48	KMRE.MINO25.B	BUCKLE T32	1,000	2,61
49	SNRK40057800B	ROD END BEARING M8 A134	1,000	17,82
50	VORE.OK107B.B	BLACK STEERING WHEEL 300MM	1,000	45,45
51	SSRK20109106B	SUPPORT BRACKET 175L D36	2,000	2,55
52	VTRK40081400B	SCREW 6x30 A193	3,000	0,48
53	GSRM40033400B	RUBBER SPACER P12	3,000	1,48
54	VBVB.F06Z35.B	SCREW 6x35 M29	1,000	0,06
55	VSVB.F08Z25.B	SCREW 8x25 A140	4,000	0,09
56	STRM.000010.B	EMAILED PLAQUE/I.M. A113	1,000	11,12

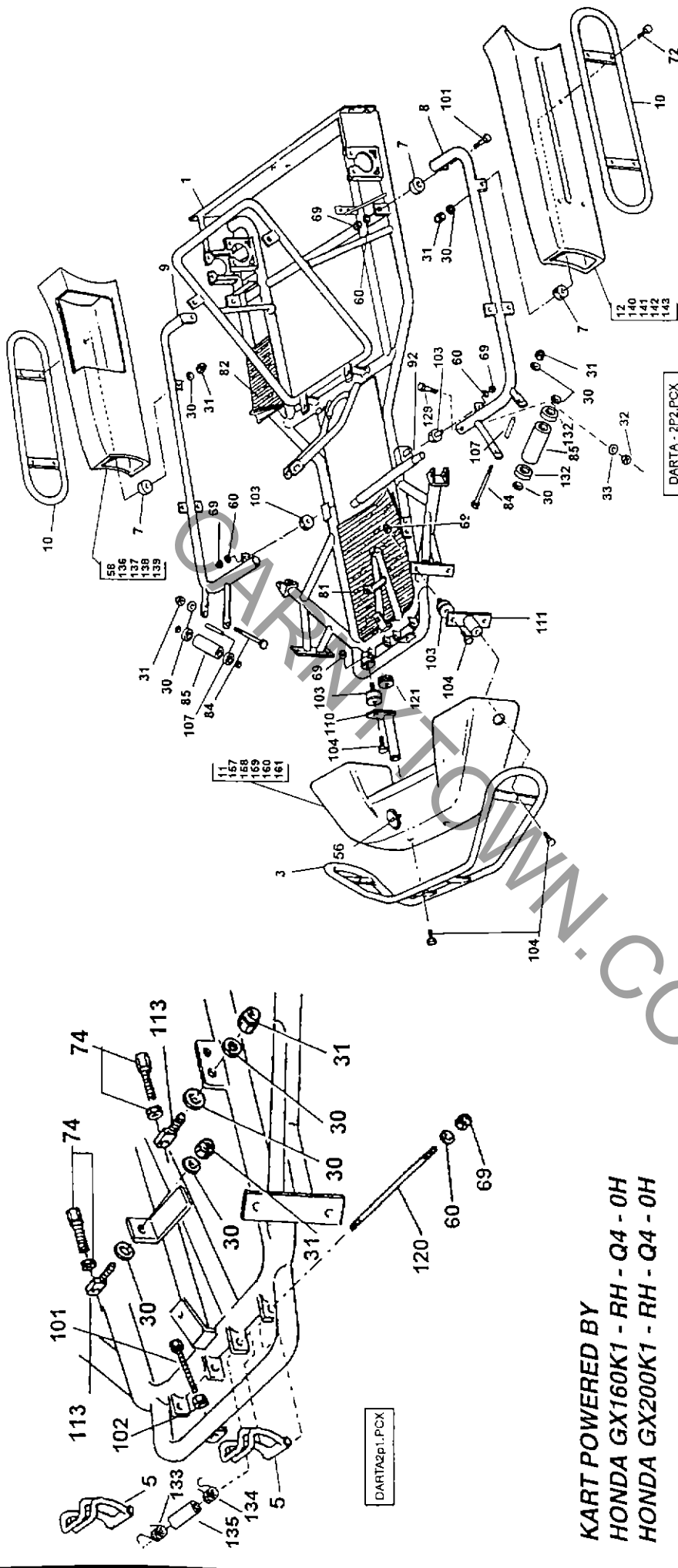
57	MPRK.0011BA.B	WHITE FRONT FEARING		1,000	21,94
58	CARE.58DXRO.B	RIGHT RED SIDE BOX		1,000	30,61
59	SERK.SH00XL.B	PLASTIC SEAT BLACK XL		1,000	72,73
60	ROVB.F10Z20.B	WASHER 10x20	D6	49,000	0,06
61	PIRM.000014.B	PINION Z14 diam. 21mm	D61	1,000	24,08
62	MHMO.GX160K.A	HONDA ENGINE GX160K1		1,000	822,00
63	PPRK20035618B	CHAIN GUARD	D65	1,000	3,27
64	STRK20192906B	CHAIN GUARD BRACKET F.	H22	1,000	2,55
65	RURK.004125.B	FRONT RIM 4MM L125		2,000	37,67
66	RURK.004210.B	BACK RIM 4MM L210		2,000	41,58
67	VTRK40058100B	TUBELESS VALVE	D27	4,000	1,06
68	STRE.001010.B	CHAIN GUARD BRACKET B.	F34	1,000	2,70
69	DAVB.F10Z08.B	NUT M10	D9	20,000	0,15
72	VBVB.F08Z70.B	SCREW 8x70	F56	6,000	0,36
73	CORK10108500B	SPROCKET D30 Z32	D55	1,000	44,48
74	VRRE.MINO43.B	REGULATION SCREW D6	H23	3,000	0,58
75	VBVB.F08Z35.B	SCREW 8X35	I10	2,000	0,15
76	SERE.001010.B	SEEGER D. 22	A149	1,000	0,03
77	VEVB.F06Z20.B	SCREW 6X20	T54	2,000	0,06
79	CURE.001010.B	BEARING 206	D52	3,000	24,91
80	PMRE.00K395.B	MECHANICAL BRAKE CALIPER	I23	1,000	91,09
81	TGRE.RI3036.B	RUBBER CARPET 36X30	D62	1,000	6,82
82	TGRE.RI3117.B	RUBBER CARPET 31X17	D63	1,000	4,58
83	RORK20035418B	ROLON WASHER-SEAT	T46	4,000	1,64
84	VEVB.F08Z150B	SCREW 8X150	D47	2,000	1,15
85	RNRE.001020.B	AL ROLL	I2	2,000	6,33
87	VBVB.F08Z25.B	SCREW M8X25	A131	1,000	0,09
88	GURE.GUA004.B	SHEATH D6		3,900	0,64
89	CCRE.CR0730.B	ACCELERATOR CABLE		1,000	0,70
90	VEVB.F06Z25.B	SCREW 6X25	T49	9,000	0,06
91	ATRE.001010.B	TIE ROD CLIP	F33	4,000	0,94
92	TRRE.004010.B	PIPE UNION		1,000	7,88
93	PNRK.VELL42.0	TYRE VEGA LL42		2,000	33,73
94	PNRK.VELL71.0	TYRE VEGA LL71		2,000	36,73
95	CARE.1252662B	CHAIN 1/2 x 5/16 M 62	D64	1,000	14,88
97	MORE.MINO23.B	BINDING SCREW V.T.D9	P11	6,000	0,36
99	ROVB.F08Z32.B	RING 8x32	A147	1,000	0,12
100	CFRE.CR002S.B	CLUTCH CABLE		2,000	0,64
101	VEVB.F10Z70.B	SCREW 1X70	D18	4,000	0,42
102	DAVB.F10Z80.B	NUT M10	H29	2,000	0,06
103	SIRM.104550.B	SILENTBLOCK 45/50 M/F	D84	14,000	6,82
104	VEVB.F10Z20.B	SCREW 10X20	D15	14,000	0,12
105	TNRE.002230.B	NYLON TUBE ROLL L295	D88	1,000	6,82
107	TURE.081212.B	NYLON TUBE ROLL		2,000	2,97
108	VEVB.F08Z25.B	SCREW 8x25	P19	5,000	0,12
109	SIRM.302008.B	SILENTBLOCK 30X20X8	P27	2,000	4,58
110	SPRE.000010.B	FR.BUMPER MIDDLE BRACKET	D58	2,000	22,82
111	SPRE.000011.B	FRONT BUMPER LAT.BRACKET	D54	2,000	22,82
113	SRRK20088306B	REGULATION SCREW SUPPORT	A99	3,000	2,55
114	CARE.MIN004.B	SHEATH CAP D6	A71	2,000	0,12
115	VTVB.F08Z50.B	BRACKET 8x50	A45	1,000	1,09
117	VBVB.F10Z100B	SCREW 10x100	D12	2,000	0,45
118	TURM.OTTG04.B	PIPE PEHD BLACK 2,4X3,2		3,000	1,15
119	DF13.00K022.B	SPACER 17X8	T47	2,000	0,30
120	PPRE.010450.B	PEDAL BRACKET	I39	1,000	5,52
121	TGRE.001060.B	RUBBER SPACER D45/10x35	I25	2,000	2,94
122	FNRM.NYL5207B	NYLON CLAMP	P2	6,000	0,06

A R T I C L E   L I S T

123	FNRM.NYL5210B	NYLON CLAMP	D48	3,000	0,09
124	VBVB.F06Z20.B	SCREW 6X20	D13	6,000	0,06
125	VBVB.F10Z40.B	SCREW 10X40    ZN	M30	2,000	0,21
126	VEVB.F08Z16.B	SCREW 8X16	A136	2,000	0,15
127	VEVB.F08Z40.B	SCREW M8x40	F41	4,000	0,06
128	ROVB.F08Z15.B	WASHER 8x15x1	A181	2,000	0,03
129	VBVB.F06Z40.B	SCREW 6x40	A17	2,000	0,24
130	AFRK20026110B	RING	F43	1,000	6,58
131	GGRK40082700B	GRUB SCREW	B77	2,000	0,39
132	CURK000608ZZB	BEARING	I18	4,000	4,03
133	MORE.221811DB	PEDAL SPRING RIGHT	I27	1,000	2,97
134	MORE.221811SB	PEDAL SPRING LEFT	I28	1,000	2,97
135	BPRE.001010.B	BUSHING	I29	1,000	1,70
136	CARE.58DXNE.B	RIGHT BLACK SIDE BOX		1,000	30,61
137	CARE.58DXBL.B	RIGHT BLUE SIDE BOX		1,000	30,61
138	CARE.58DXBI.B	RIGHT WITHE SIDE BOX		1,000	30,61
139	CARE.58DXGI.B	RIGHT YELLOW SIDE BOX		1,000	30,61
140	CARE.58SXBI.B	LEFT WITHE SIDE BOX		1,000	27,88
141	CARE.58SXGL.B	LEFT YELLOW SIDE BOX		1,000	27,88
142	CARE.58SXNE.B	LEFT BLACK SIDE BOX		1,000	27,88
143	CARE.58SXBL.B	LEFT BLUE SIDE BOX		1,000	27,88
144	MPRK.0011BL.B	BLUE FRONT PANEL		1,000	21,94
145	MPRK.0011GL.B	YELLOW FRONT FEARING		1,000	21,94
146	MPRK.0011NE.B	BLACK FRONT PANEL		1,000	21,94
147	MPRK.0011RO.B	RED FRONT FEARING		1,000	21,94
148	MHMO.GX200C.A	HONDA GX200 ENGINE		1,000	964,67
150	PIRM.000012.B	PINION Z12 diam. 21mm	F39	1,000	19,67
151	SERK.SH00XLKB	PADDED SEAT XL		1,000	172,73
152	CORK10106900B	SPROCKET 30 Z24	M22	1,000	44,48
153	CORK10107300B	SPROCKET 30 Z26	H3	1,000	44,48
154	CORK10107700B	SPROCKET 30 Z28	D74	1,000	44,48
155	CORK10108100B	SPROCKET 30 Z30	F37	1,000	44,48
156	DFRE.001400.B	BRAKE DISC	F11	1,000	46,67
157	ACRK.0011BA.B	WHITE SPOILER		1,000	38,15
158	ACRK.0011BL.B	BLU38,12			

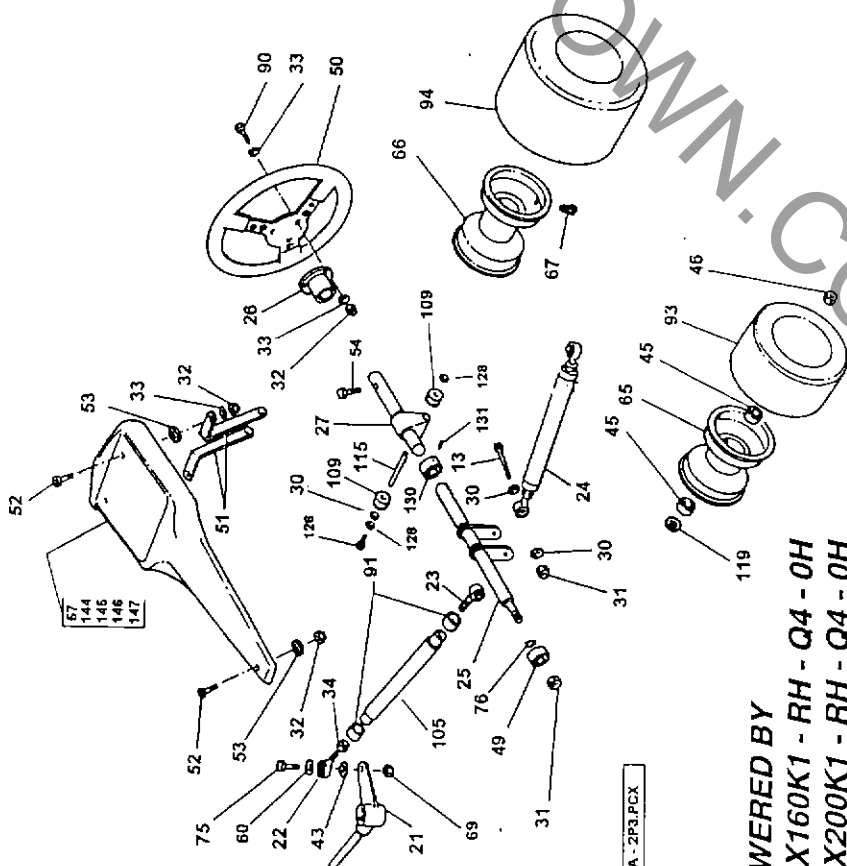
WWW.COM

Questo disegno è valido per il Kart DART2000 con matricola dal 01015 in poi.  
Ce dessin est valable pour Kart DART2000 avec numéro serie souveleur a 0  
This drawing is valable for Kart DART2000 with number higher then 01015



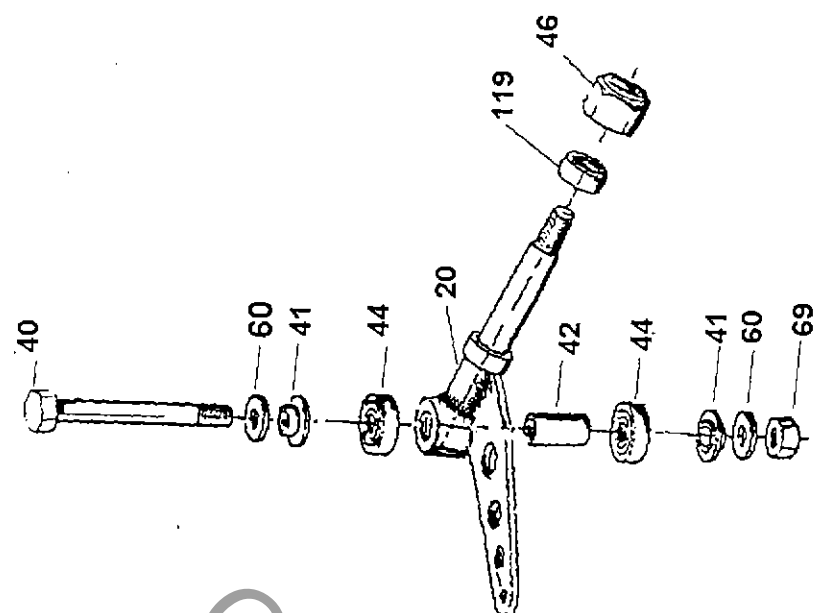
**KART POWERED BY  
HONDA GX160K1 - RH - Q4 - 0H  
HONDA GX200K1 - RH - Q4 - 0H**

RIF	CODICE	DESCRIZIONE	RIF	CODICE	DESCRIZIONE	RIF	CODICE	DESCRIZIONE
1	TGRE.002000.B	TELAIO DART2000 N	111	SPRE.000011.B	SUPPORTO LAT. PARAURTI	142	CARE.58SXNE.B	CARENA DART2000 SX NERA
3	PARE.001015.B	PARAURTI ANTERIORE-SPOILER	113	SHRK20083068.B	SUPP. REG. CAVO COMANDO	143	CARE.58SXLB.B	CARENA DART2000 SX BLU
5	PERE.001037.B	PEDALE DORPIO	120	TPRE.010450.B	PERNO PEDALE DART2000	157	ACRK.00118A.B	SPOILER BIANCO
7	TGRE.001050.B	TAMPONE GOMMA D.45 / 10X45	121	TGRE.001060.B	TAMPONE GOMMA D45/10X35	158	ACRK.00118L.B	SPOILER BLU
8	PLRE.006960.B	PARAURTI LATERALE SX	129	VBVB.F06240.B	VITE TCE 6X40 ZN	159	ACRK.0011GL.B	SPOILER GIALLO
9	PLRE.006970.B	PARAURTI LATERALE DX	132	CURK000602ZB	CUSCINETTO FUSELLO	160	ACRK.0011NE.B	SPOILER NERO
10	TLRE.001081.B	TELAIO LATERALE ESTERNO	133	MORE.221811DB	MOLLA SX RICHIAMO PEDALE	161	ACRK.0011VE.B	SPOILER VERDE
11	ACRK.0011RO.B	SPOILER ROSSO	134	MORE.221811SB	MOLLA SX RICHIAMO PEDALE			
12	CARE.58SXRO.B	CARENA DART2000 SX ROSSA	135	BPRE.001010.B	BUSSOLA PERNO PEDALE			
30	ROVB.F08216.B	RONDELLA 8X16X2 ZN	136	CARE.58DXNE.B	CARENA DART2000 DX NERA			
31	DAVB.F08206.B	DADO AUT. 8MZN	137	CARE.58DXBL.B	CARENA DART2000 DX BLU			
32	DAVB.F06204.B	DADO AUT. 6MZN	138	CARE.58DXBI.B	CARENA DART2000 DX BIANCA			
33	ROVD.F06212.B	RONDELLA 6X12 ZN	139	CARE.58DXGI.B	CARENA DART2000 DX GIALLA			
56	STRM.000010.B	PLACCA SMALTATA	140	CARE.58SXBIB	CARENA DART2000 SX BIANCA			
58	CARE.58DXRO.B	CARENA DART2000 DX ROSSA	141	CARE.58SXLGB	CARENA DART2000 SX GIALLA			
60	ROVB.F10220.B	RONDELLA 10X20 ZN	142	SPRE.000011.B	SUPPORTO LAT. PARAURTI			
69	DAVB.F10208.B	DADO AUT. M10/ZN	143	SHRK20083068.B	SUPP. REG. CAVO COMANDO			
72	VBVB.F08270.B	VITE TCE 8X70 ZN	120	TPRE.010450.B	PERNO PEDALE DART2000			
74	VRRE.MINO43.B	VITE REGISTRO D.6	121	TGRE.001060.B	TAMPONE GOMMA D45/10X35			
81	VRRE.R13036.B	TAPPETINO 36X30	129	VBVB.F06240.B	VITE TCE 6X40 ZN			
82	TGRE.R13117.B	TAPPETINO 31X17	132	CURK000602ZB	CUSCINETTO FUSELLO			
84	VEVB.F0821508	VITE TE. 8X150 ZN	133	MORE.221811DB	MOLLA SX RICHIAMO PEDALE			
85	HNRE.001020.B	RULLO RUOTE	134	MORE.221811SB	MOLLA SX RICHIAMO PEDALE			
92	TRRE.004010.B	TURO RACCORDO	135	BPRE.001010.B	BUSSOLA PERNO PEDALE			
101	DAVB.F10270.B	VITE TE. 10X70 ZN	136	CARE.58DXNE.B	CARENA DART2000 DX NERA			
102	DAVB.F10260.B	DADO BASSO M10/ ZN	137	CARE.58DXBL.B	CARENA DART2000 DX BLU			
103	SIRM.104550.B	SILENTBLOCK 45X50X73 MF	138	CARE.58DXBI.B	CARENA DART2000 DX BIANCA			
104	VEVB.F10220.B	VITE TE. 10X20 ZN	139	CARE.58DXGI.B	CARENA DART2000 DX GIALLA			
107	TURE.061212.B	TUBETTO RULLO NYLON N	140	CARE.58SXBIB	CARENA DART2000 SX BIANCA			
110	SPRE.000010.B	SUPPORTO CENT. PARAURTI	141	CARE.58SXLGB	CARENA DART2000 SX GIALLA			
113	PLRE.006960.B	PARAURTI LATERALE SX	142	SPRE.000011.B	SUPPORTO LAT. PARAURTI			
119	PERE.001037.B	PEDALE DORPIO	143	SHRK20083068.B	SUPP. REG. CAVO COMANDO			
D71	TGRE.001050.B	TAMPONE GOMMA D.45 / 10X45	120	TPRE.010450.B	PERNO PEDALE DART2000			
P9	ROVB.F08216.B	RONDELLA 8X16X2 ZN	121	TGRE.001060.B	TAMPONE GOMMA D45/10X35			
D8	DAVB.F08206.B	DADO AUT. 8MZN	129	VBVB.F06240.B	VITE TCE 6X40 ZN			
D7	DAVB.F06204.B	DADO AUT. 6MZN	132	CURK000602ZB	CUSCINETTO FUSELLO			
H35	ROVD.F06212.B	RONDELLA 6X12 ZN	133	MORE.221811DB	MOLLA SX RICHIAMO PEDALE			
A13	STRM.000010.B	PLACCA SMALTATA	134	MORE.221811SB	MOLLA SX RICHIAMO PEDALE			
A13	ROVD.F06212.B	RONDELLA 6X12 ZN	135	BPRE.001010.B	BUSSOLA PERNO PEDALE			
A13	STRM.000010.B	PLACCA SMALTATA	136	CARE.58DXNE.B	CARENA DART2000 DX NERA			
A13	ROVD.F06212.B	RONDELLA 6X12 ZN	137	CARE.58DXBL.B	CARENA DART2000 DX BLU			
A13	STRM.000010.B	PLACCA SMALTATA	138	CARE.58DXBI.B	CARENA DART2000 DX BIANCA			
A13	ROVD.F06212.B	RONDELLA 6X12 ZN	139	CARE.58DXGI.B	CARENA DART2000 DX GIALLA			
A13	STRM.000010.B	PLACCA SMALTATA	140	CARE.58SXBIB	CARENA DART2000 SX BIANCA			
A13	ROVD.F06212.B	RONDELLA 6X12 ZN	141	CARE.58SXLGB	CARENA DART2000 SX GIALLA			
A13	STRM.000010.B	PLACCA SMALTATA	142	SPRE.000011.B	SUPPORTO LAT. PARAURTI			
A13	ROVD.F06212.B	RONDELLA 6X12 ZN	143	SHRK20083068.B	SUPP. REG. CAVO COMANDO			
A13	STRM.000010.B	PLACCA SMALTATA	120	TPRE.010450.B	PERNO PEDALE DART2000			
A13	ROVD.F06212.B	RONDELLA 6X12 ZN	121	TGRE.001060.B	TAMPONE GOMMA D45/10X35			
A13	STRM.000010.B	PLACCA SMALTATA	129	VBVB.F06240.B	VITE TCE 6X40 ZN			
A13	ROVD.F06212.B	RONDELLA 6X12 ZN	132	CURK000602ZB	CUSCINETTO FUSELLO			
A13	STRM.000010.B	PLACCA SMALTATA	133	MORE.221811DB	MOLLA SX RICHIAMO PEDALE			
A13	ROVD.F06212.B	RONDELLA 6X12 ZN	134	MORE.221811SB	MOLLA SX RICHIAMO PEDALE			
A13	STRM.000010.B	PLACCA SMALTATA	135	BPRE.001010.B	BUSSOLA PERNO PEDALE			
A13	ROVD.F06212.B	RONDELLA 6X12 ZN	136	CARE.58DXNE.B	CARENA DART2000 DX NERA			
A13	STRM.000010.B	PLACCA SMALTATA	137	CARE.58DXBL.B	CARENA DART2000 DX BLU			
A13	ROVD.F06212.B	RONDELLA 6X12 ZN	138	CARE.58DXBI.B	CARENA DART2000 DX BIANCA			
A13	STRM.000010.B	PLACCA SMALTATA	139	CARE.58DXGI.B	CARENA DART2000 DX GIALLA			
A13	ROVD.F06212.B	RONDELLA 6X12 ZN	140	CARE.58SXBIB	CARENA DART2000 SX BIANCA			
A13	STRM.000010.B	PLACCA SMALTATA	141	CARE.58SXLGB	CARENA DART2000 SX GIALLA			
A13	ROVD.F06212.B	RONDELLA 6X12 ZN	142	SPRE.000011.B	SUPPORTO LAT. PARAURTI			
A13	STRM.000010.B	PLACCA SMALTATA	143	SHRK20083068.B	SUPP. REG. CAVO COMANDO			
A13	ROVD.F06212.B	RONDELLA 6X12 ZN	120	TPRE.010450.B	PERNO PEDALE DART2000			
A13	STRM.000010.B	PLACCA SMALTATA	121	TGRE.001060.B	TAMPONE GOMMA D45/10X35			
A13	ROVD.F06212.B	RONDELLA 6X12 ZN	129	VBVB.F06240.B	VITE TCE 6X40 ZN			
A13	STRM.000010.B	PLACCA SMALTATA	132	CURK000602ZB	CUSCINETTO FUSELLO			
A13	ROVD.F06212.B	RONDELLA 6X12 ZN	133	MORE.221811DB	MOLLA SX RICHIAMO PEDALE			
A13	STRM.000010.B	PLACCA SMALTATA	134	MORE.221811SB	MOLLA SX RICHIAMO PEDALE			
A13	ROVD.F06212.B	RONDELLA 6X12 ZN	135	BPRE.001010.B	BUSSOLA PERNO PEDALE			
A13	STRM.000010.B	PLACCA SMALTATA	136	CARE.58DXNE.B	CARENA DART2000 DX NERA			
A13	ROVD.F06212.B	RONDELLA 6X12 ZN	137	CARE.58DXBL.B	CARENA DART2000 DX BLU			
A13	STRM.000010.B	PLACCA SMALTATA	138	CARE.58DXBI.B	CARENA DART2000 DX BIANCA			
A13	ROVD.F06212.B	RONDELLA 6X12 ZN	139	CARE.58DXGI.B	CARENA DART2000 DX GIALLA			
A13	STRM.000010.B	PLACCA SMALTATA	140	CARE.58SXBIB	CARENA DART2000 SX BIANCA			
A13	ROVD.F06212.B	RONDELLA 6X12 ZN	141	CARE.58SXLGB	CARENA DART2000 SX GIALLA			
A13	STRM.000010.B	PLACCA SMALTATA	142	SPRE.000011.B	SUPPORTO LAT. PARAURTI			
A13	ROVD.F06212.B	RONDELLA 6X12 ZN	143	SHRK20083068.B	SUPP. REG. CAVO COMANDO			
A13	STRM.000010.B	PLACCA SMALTATA	120	TPRE.010450.B	PERNO PEDALE DART2000			
A13	ROVD.F06212.B	RONDELLA 6X12 ZN	121	TGRE.001060.B	TAMPONE GOMMA D45/10X35			
A13	STRM.000010.B	PLACCA SMALTATA	129	VBVB.F06240.B	VITE TCE 6X40 ZN			
A13	ROVD.F06212.B	RONDELLA 6X12 ZN	132	CURK000602ZB	CUSCINETTO FUSELLO			
A13	STRM.000010.B	PLACCA SMALTATA	133	MORE.221811DB	MOLLA SX RICHIAMO PEDALE			
A13	ROVD.F06212.B	RONDELLA 6X12 ZN	134	MORE.221811SB	MOLLA SX RICHIAMO PEDALE			
A13	STRM.000010.B	PLACCA SMALTATA	135	BPRE.001010.B	BUSSOLA PERNO PEDALE			
A13	ROVD.F06212.B	RONDELLA 6X12 ZN	136	CARE.58DXNE.B	CARENA DART2000 DX NERA			
A13	STRM.000010.B	PLACCA SMALTATA	137	CARE.58DXBL.B	CARENA DART2000 DX BLU			
A13	ROVD.F06212.B	RONDELLA 6X12 ZN	138	CARE.58DXBI.B	CARENA DART2000 DX BIANCA			
A13	STRM.000010.B	PLACCA SMALTATA	139	CARE.58DXGI.B	CARENA DART2000 DX GIALLA			
A13	ROVD.F06212.B	RONDELLA 6X12 ZN	140	CARE.58SXBIB	CARENA DART2000 SX BIANCA			
A13	STRM.000010.B	PLACCA SMALTATA	141	CARE.58SXLGB	CARENA DART2000 SX GIALLA			
A13	ROVD.F06212.B	RONDELLA 6X12 ZN	142	SPRE.000011.B	SUPPORTO LAT. PARAURTI			
A13	STRM.000010.B	PLACCA SMALTATA	143	SHRK20083068.B	SUPP. REG. CAVO COMANDO			



DARTA - 2P3.PCX

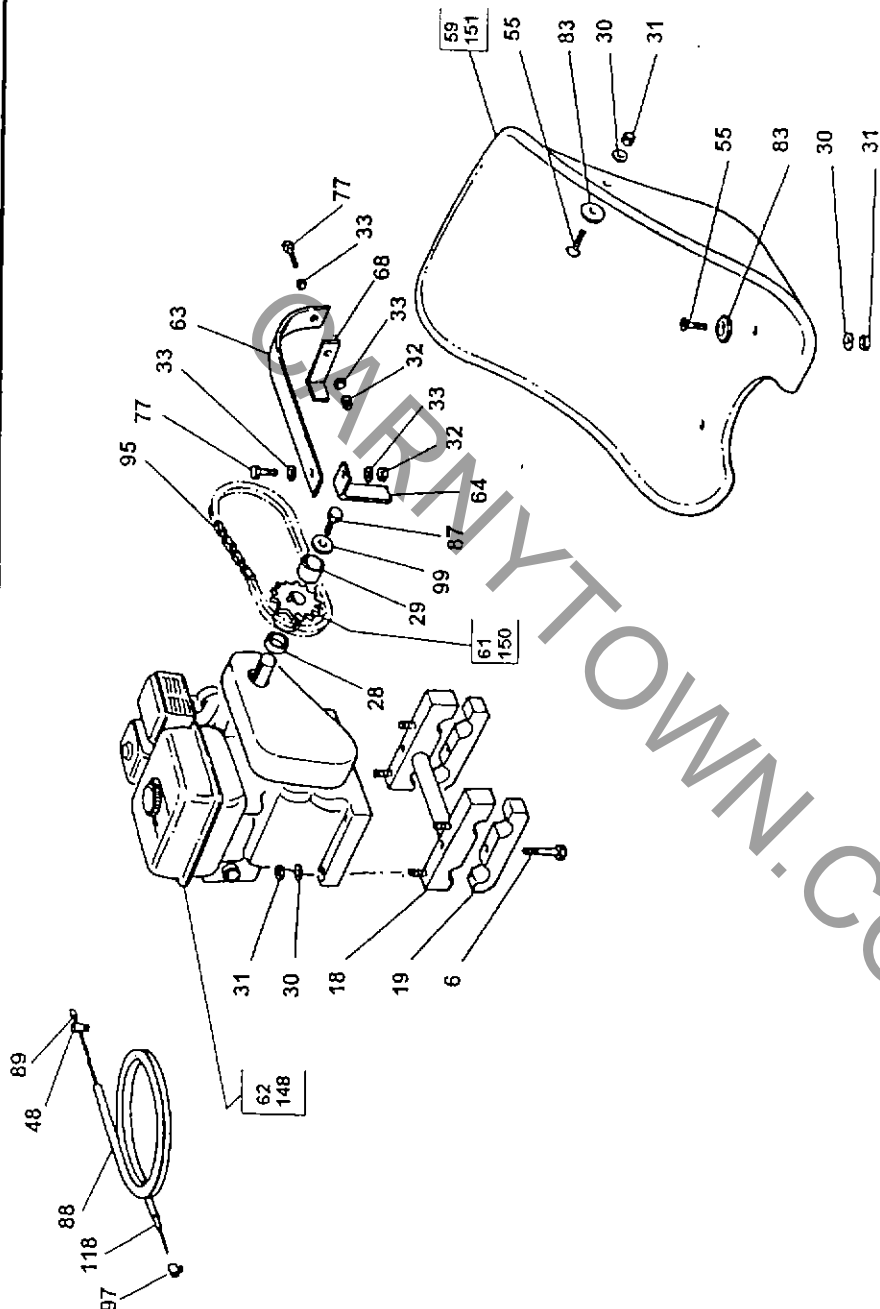
**KART POWERED BY  
 HONDA GX160K1 - RH - Q4 - 0H  
 HONDA GX200K1 - RH - Q4 - 0H**



DPROVIAA.PCX

RIF	CODICE	DESCRIZIONE	RIF	CODICE	DESCRIZIONE	RIF	CODICE	DESCRIZIONE
13	VEVB.F08270.B	VITE TE 8X70 ZN	60	ROVB.F10220.B	RONDELLA 10X20 ZN	119	DF13.00K022.B	DISTANZIALE FUS. 17X8
20	FSRE.001810.B	FUSELLO SX 26X48	66	FURK.004125.B	RUOTA ANT.4mm L125	126	VEVB.F08215.B	VITE TE 8X16 ZN
21	FDRE.001810.B	FUSELLO DX 26X48	67	VTRK.400581008	VALVOLA TUBELESS	130	AFRK.002611.B	ANELLO FRENO PIANTONE
22	SSRE.002100.B	SNODO SFERICO SX DART	69	DAVB.F10208.B	DADO AUT. M10/ZN	131	GGPK.00827008	GRANCO 6MX6 UNI 5929
23	SDRE.002000.B	SNODO SFERICO DX DART	75	VBVB.F08235.B	VITE TCE 8X35 ZN	144	MPRK.001181.B	MUSETTO PIATTO BLU
24	TNRE.002300.B	TIRANTE NYLON L275	76	SERE.001010.B	SEEGER D.22	145	MPRK.001181.B	MUSETTO PIATTO BIANCO
25	SVRE.002300.B	PIANTONE STERZO	90	VEVB.F08225.B	VITE TE 6X25 ZN	146	MPRK.001181.B	MUSETTO PIATTO NERO
26	SPRE.002400.B	SUPPORTO VOLANTE DART	91	ATRE.001010.B	ANELLO TIRANTE STERZO	147	MPRK.001181.B	MUSETTO PIATTO ROSSO
27	SPRE.002500.B	SUPPORTO VOLANTE DART	93	PNRK.VELL71.0	PNEUMATICO VEGA LL42			
30	ROVB.F08215.B	RONDELLA 8X16X2 ZN	94	PNRK.VELL71.0	PNEUMATICO VEGA LL71			
31	DAVB.F08206.B	DADO AUT. 8M/ZN	105	TNRE.002300.B	TIRANTE NYLON L295			
32	DAVB.F06204.B	DADO AUT. 6M/ZN	108	SIRM.302008.B	SILENTBLOCK 30X20X8			
33	ROVB.F06212.B	RONDELLA 6X12 ZN	115	VTVB.F08250.B	BARETTA 8X50			
34	DAVB.F08205.B	DADO 6M BASSO						

Questo disegno è valido per il Kart DART2000 con matricola dai 01015 in poi  
 Ce dessin est valable pour Kart DART2000 avec numero serie souvaleur a 010  
 This drawing is valid for Kart DART2000 with number higher then 01015



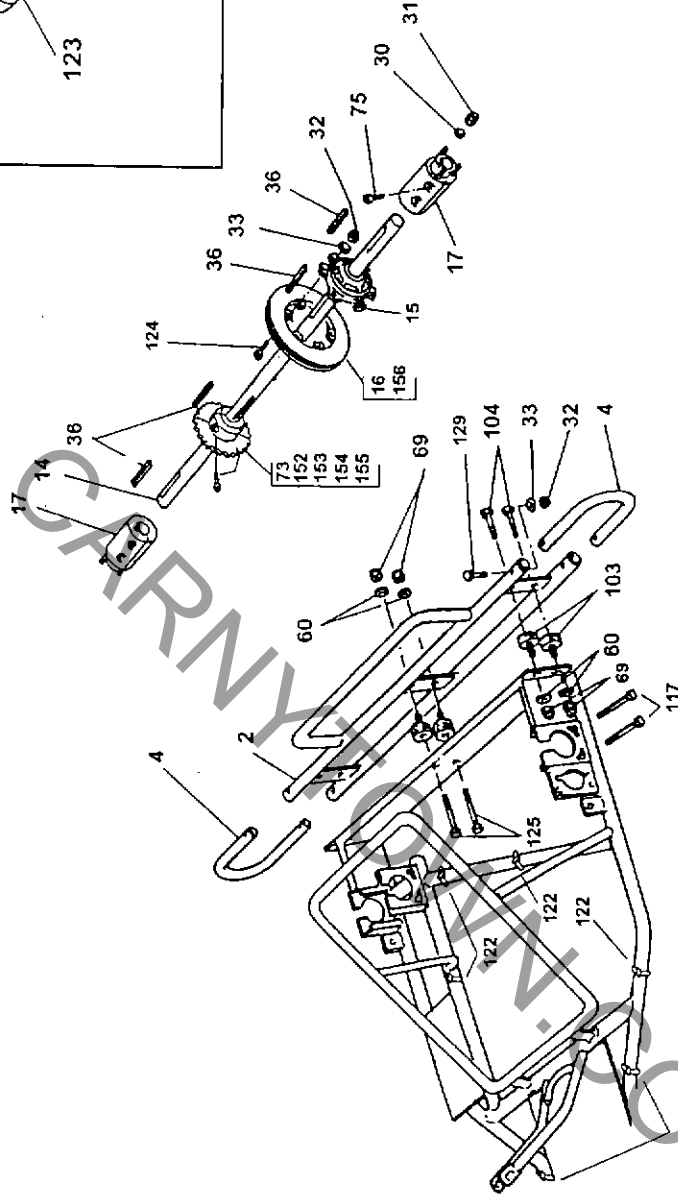
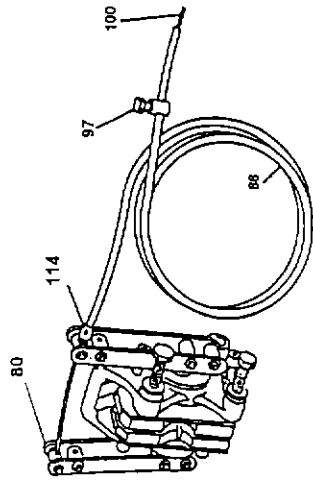
DARTA-ZP4.PCX

RIF	CODICE	DESCRIZIONE	RIF	CODICE	DESCRIZIONE	RIF	CODICE	DESCRIZIONE
6	VBVB.F10Z50.B	VITE TCE 10X50 ZN	33	ROVB.F06Z12.B	RONDELLA 6X12 ZN	68	STRE.001010.B	STAFFA PARACATENA POST.
16	SMRE.001605.B	SUPPORTO MOTORE H80 RENT 94	48	KMRE.MIN025.B	MIT MORSETTO COM ACC.	734	VEVB.F06Z20.B	VITE TE 6X20 ZN
19	CCRE.001700.B	CAVALLOTTO DART 2000	55	V5VB.F08Z25.B	VITE TSCE 8X25 ZN	T54	ROBK2003541BB	RONDELLA NYLON SEDILE
26	BURE.002600.B	BUSSOLA mm 5 DART 2000	59	SERK.SH000XL.B	SEDILE PLASTICA XL NERO	T46	VBVB.F08Z25.B	VITE TCE 8X25 ZN
28	BURE.002700.B	BUSSOLA N.	61	PIRM.090014.D	PIGNONE Z14 DIAM. 21mm	A131	GURE.GUAD004.B	GUAINA D.6
30	ROVB.F08Z16.B	RONDELLA 8X16X2 ZN	62	MHMO.GX160K.A	MOTORE HONDA GX160K1	88	CCRE.CR0730.B	CAVO ACCEL SAVOARIADA D. 1,9
31	DAVB.F06Z06.B	DADO AUT. 8M/ZN	63	PPRK2003561BB	PARACATENA PIATTO	89	CARE.125262B	CATENA 1/2 X 5/16 M61
32	DAVB.F06Z04.B	DADO AUT. 6M/ZN	64	STRK20192906B	STAFFA PARACATENA ANT.	D64	MORE.MINO23.B	MORSETTO V.T. D.9
						H41		

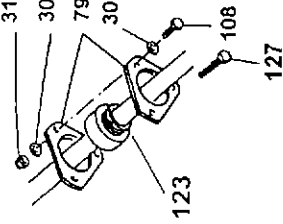
# ITALIA MOTORI

via settembrini, 3 - 20020 Iainate (mi) - italy - tel. +39.2.9357.1317 / 1199 fax +39.2.9357.2005

Questo disegno è valido per il Kart DART2000 con matricola dal 01015 in poi  
 Ce dessin est valable pour Kart DART2000 avec numero serie souveleur a 0101  
 This drawing is valid for Kart DART2000 with number higher then 01015



DARTA - 2P5.PCX



RIF	CODICE	DESCRIZIONE	RIF	CODICE	DESCRIZIONE	RIF	CODICE	DESCRIZIONE
2	PPRE.001001.B	PARAURTI POSTERIORE DART 2000	97	MORE.MINO23.B	MORSETTO VT D.9	H41		
4	LPRE.001020.B	LATERALE PARAURTI DART 2000	100	CFRE.CRO02S.B	CAVO FRIZIONE APE	D84		
14	ASRE.001200.B	ASSALE DART2000	103	SIRM.104550.B	SILENTBLOCK 45X50X73 MF	D15		
15	PCRE.001300.B	PORTACORONA DART 2000	104	VEVB.F10Z20.B	VITE TE 10X20.ZN	P19		
16	DVRE.001400.B	DISCO FRENO VENTILATO	108	VEVB.F08Z25.B	VITE TE 8X25.ZN	A71		
17	DVRE.001500.B	MOZZETTO L150 DART2000	114	CARE.MINO04.B	CAPOGUAINA GUAINA D.6	D12		
30	ROVB.F08Z16.B	RONDELLA 8X16X2 ZN	117	VEVB.F10Z100B	VITE TCE 10X100.ZN	P2		
31	DAVB.F08Z06.B	DADO AUT. 8M.ZN	122	FNRM.NYL5207B	FASCETTA NYLON 200	D48		
32	DAVB.F06Z04.B	DADO AUT. 6M.ZN	123	FNRM.NYL5210B	FASCETTA NYLON 280			
33	ROVB.F06Z12.B	RONDELLA 6X12.ZN	124					
36	CHRK20013306B	CHIAVETTA 6X6X80 MOZZ.	125					
60	ROVB.F10Z20.B	RONDELLA 10X20.ZN	126					
69	DAVB.F10Z08.B	DADO AUT. M10.ZN	127					
73	CORR101065008	CORONA 30 Z.32	128					
75	VEVB.F08Z35.B	VITE TCE 8X35.ZN	129					
79	CURE.001010.B	CUSCINETTO POST. BOPP 206	130					
80	PMRE.00K395.B	PINZA MECCANICA CPL	131					
88	GURE.GUA004.B	GUAINA D.6	132					
89			133					
90			134					
91			135					
92			136					
93			137					
94			138					
95			139					
96			140					
97			141					
98			142					
99			143					
100			144					
101			145					
102			146					
103			147					
104			148					
105			149					
106			150					
107			151					
108			152					
109			153					
110			154					
111			155					
112			156					
113								
114								
115								
116								
117								
118								
119								
120								
121								
122								
123								
124								
125								
126								
127								
128								
129								
130								
131								
132								
133								
134								
135								
136								
137								
138								
139								
140								
141								
142								
143								
144								
145								
146								
147								
148								
149								
150								
151								
152								
153								
154								
155								
156								

ARTICLE : KRRE.01015L.1 DART2000/160/200

CURRENCY : U.S.\$

ITEM	CODE	DESCRIPTION	QUANTITY	PRICE
1	TCRE.002000.B	CHASSIS DART2000	1,000	630,00
2	PPRE.001001.B	REAR BUMPER	1,000	69,33
3	PARE.00101S.B	FRONT BUMPER-SPOILER	1,000	79,91
4	LPRE.001020.B	BACK BUMPER LATERAL U	2,000	8,00
5	PERE.001037.B	PEDAL I19	2,000	31,70
6	VBVB.F10Z50.B	SCREW 10X50 D14	2,000	0,21
7	TGRE.001050.B	RUBBER SPACER D45/10X45 D71	8,000	3,42
8	PLRE.006060.B	LEFT LATERAL BUMPER	1,000	85,33
9	PLRE.006070.B	RIGHT LATERAL BUMPER	1,000	85,33
10	TLRE.001081.B	EXTERNAL LATERAL RENFORCER	2,000	45,67
11	ACRK.0011RO.B	RED SPOILER	1,000	38,12
12	CARE.58SXRO.B	LEFT RED SIDE BOX	1,000	27,88
13	VEVB.F08Z70.B	SCREW 8x70 D5	1,000	0,24
14	ASRE.001200.B	AXLE	1,000	57,06
15	PCRE.001300.B	SPROCKET SUPPORT D86	2,000	20,09
16	DVRE.001400.B	VENTILATED BRAKE DISC D69	1,000	67,12
17	MORE.001500.B	HUB L120 F7	2,000	36,55
18	SMRE.001605.B	ENGINE MONTING H80 DART2000	1,000	65,03
19	CCRE.001700.B	ENGINE BRACKET D3	2,000	9,12
20	FSRE.001810.B	LEFT STUBAXLE 26/48 D78	1,000	32,00
21	FDRE.001810.B	RIGHT STUBAXLE 26/48 D79	1,000	32,00
22	SSRE.002100.B	ROD END BEARING LEFT F49	2,000	11,39
23	SDRE.002000.B	ROD END BEARING RIGHT F50	2,000	11,39
24	TNRE.002300.B	NYLON BRACKET L280 D87	1,000	6,42
25	PSRE.002300.B	STEERING COLUMN D73	1,000	26,27
26	SVRE.002400.B	STEERING WHEEL REST D51	1,000	8,61
27	SPRE.002500.B	STEERING COLUMN MOUNTING D26	1,000	2,55
28	BURE.002600.B	BUSHING MM5 M33	1,000	1,12
29	BURE.002700.B	BUSHING N I40	1,000	1,61
30	ROVB.F08Z16.B	WASHER 8x16x2 P9	61,000	0,03
31	DAVB.F08Z06.B	NUT 8M D8	40,000	0,15
32	DAVB.F06Z04.B	NUT 6M D7	23,000	0,12
33	ROVB.F06Z12.B	WASHER 6x12 H35	34,000	0,06
34	DAVB.F08Z05.B	NUT 8M A132	2,000	0,06
36	CHRK20013306B	KEY 6x6x80 D21	4,000	0,64
40	VBVB.F10Z90.B	SCREW 10Mx90 M27	2,000	0,88
41	BGRK20006506B	BUSHING M12	4,000	1,48
42	FDRE.001810DB	SPACER 10x14x32 T52	2,000	1,79
43	DIRK20109806B	SPACER 8x20x5,5 F35	2,000	1,48
44	CURK006000ZZB	BEARING 10x26 P8	4,000	2,06
45	CURK0006003ZB	BEARING I17	4,000	6,58
46	DAVB.F14Z10.B	NUT M14 P10	2,000	0,82
48	KMRE.MINO25.B	BUCKLE T32	1,000	2,61
49	SNRK40057800B	ROD END BEARING M8 A134	1,000	17,82
50	VORE.0K107B.B	BLACK STEERING WHEEL 300MM	1,000	45,45
51	SSRK20109106B	SUPPORT BRACKET 175L D36	2,000	2,55
52	VTRK40081400B	SCREW 6x30 A193	3,000	0,48
53	GSRM40033400B	RUBBER SPACER P12	3,000	1,48
54	VBVB.F06Z35.B	SCREW 6x35 M29	1,000	0,06
55	VSVB.F08Z25.B	SCREW 8x25 A140	4,000	0,09
56	STRM.000010.B	EMAILED PLAQUE/I.M. A113	1,000	11,12

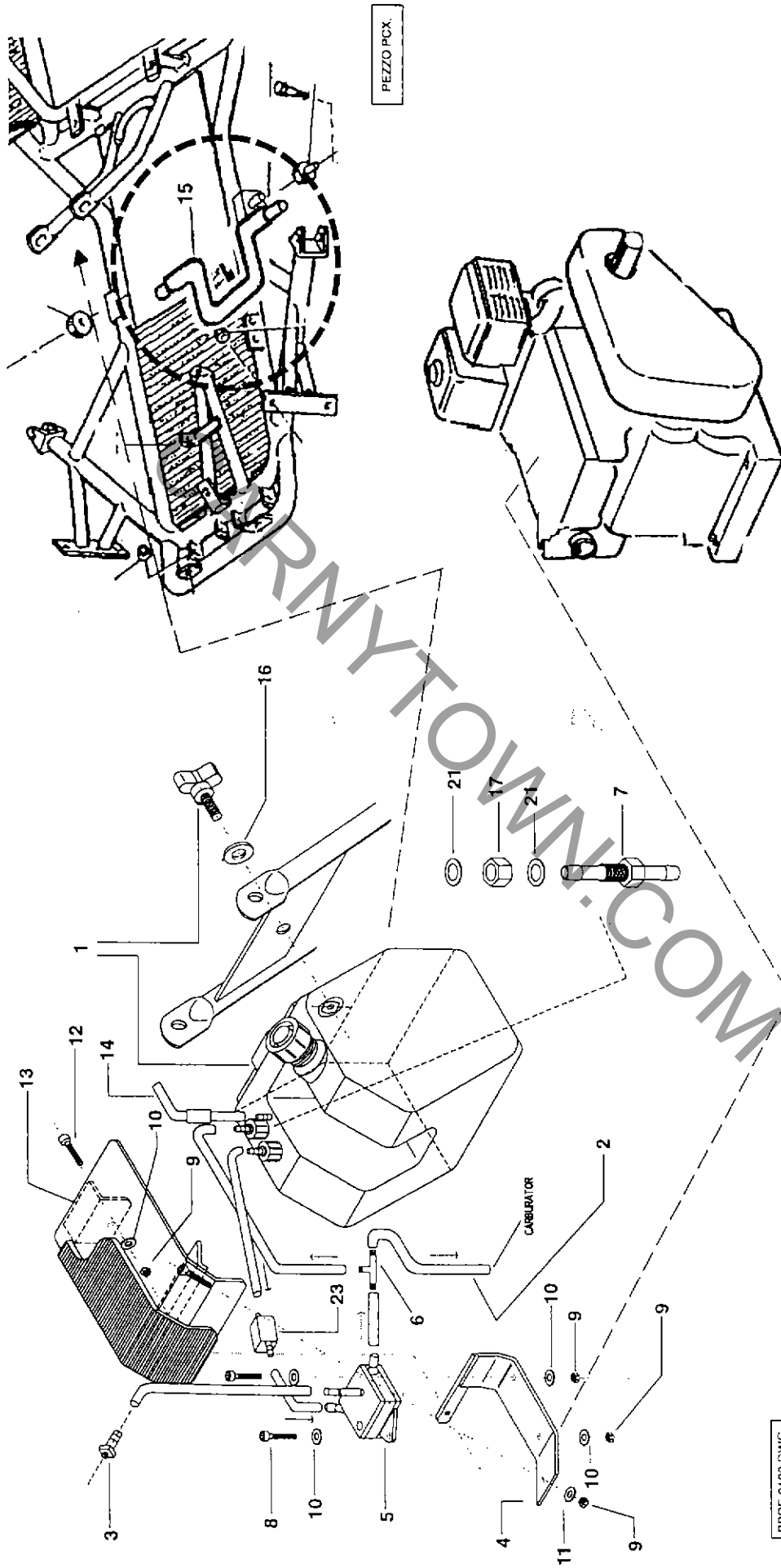
ARTICLE LIST

57	MPRK.0011BA.B	WHITE FRONT FEARING		1,000	21,94
58	CARE.58DXRO.B	RIGHT RED SIDE BOX		1,000	30,61
59	SERK.SH00XL.B	PLASTIC SEAT BLACK XL		1,000	72,73
60	ROVB.F10Z20.B	WASHER 10x20	D6	49,000	0,06
61	PIRM.000014.B	PINION Z14 diam. 21mm	D61	1,000	24,08
62	MHMO.GX160K.A	HONDA ENGINE GX160K1		1,000	822,00
63	PPRK20035618B	CHAIN GUARD	D65	1,000	3,27
64	STRK20192906B	CHAIN GUARD BRACKET F.	H22	1,000	2,55
65	RURK.004125.B	FRONT RIM 4MM L125		2,000	37,67
66	RURK.004210.B	BACK RIM 4MM L210		2,000	41,58
67	VTRK40058100B	TUBELESS VALVE	D27	4,000	1,06
68	STRE.001010.B	CHAIN GUARD BRACKET B.	F34	1,000	2,70
69	DAVB.F10Z08.B	NUT M10	D9	20,000	0,15
72	VBVB.F08Z70.B	SCREW 8x70	F56	6,000	0,36
73	CORK10108500B	SPROCKET D30 Z32	D55	1,000	44,48
74	VRRE.MINO43.B	REGULATION SCREW D6	H23	3,000	0,58
75	VBVB.F08Z35.B	SCREW 8X35	I10	2,000	0,15
76	SERE.001010.B	SEEGER D. 22	A149	1,000	0,03
77	VEVB.F06Z20.B	SCREW 6X20	T54	2,000	0,06
79	CURE.001010.B	BEARING 206	D52	3,000	24,91
80	PMRE.00K395.B	MECHANICAL BRAKE CALIPER	I23	1,000	91,09
81	TGRE.RI3036.B	RUBBER CARPET 36X30	D62	1,000	6,82
82	TGRE.RI3117.B	RUBBER CARPET 31X17	D63	1,000	4,58
83	RORK20035418B	ROLON WASHER-SEAT	T46	4,000	1,64
84	VEVB.F08Z150B	SCREW 8X150	D47	2,000	1,15
85	RNRE.001020.B	AL ROLL	I2	2,000	6,33
87	VBVB.F08Z25.B	SCREW M8X25	A131	1,000	0,09
88	GURE.GUA004.B	SHEATH D6		3,900	0,64
89	CCRE.CR0730.B	ACCELERATOR CABLE		1,000	0,70
90	VEVB.F06Z25.B	SCREW 6X25	T49	9,000	0,06
91	ATRE.001010.B	TIE ROD CLIP	F33	4,000	0,94
92	TRRE.004010.B	PIPE UNION		1,000	7,88
93	PNRK.VELL42.0	TYRE VEGA LL42		2,000	33,73
94	PNRK.VELL71.0	TYRE VEGA LL71		2,000	36,73
95	CARE.1252662B	CHAIN 1/2 x 5/16 M 62	D64	1,000	14,88
97	MORE.MINO23.B	BINDING SCREW V.T.D9	P11	6,000	0,36
99	ROVB.F08Z32.B	RING 8x32	A147	1,000	0,12
100	CFRE.CR002S.B	CLUTCH CABLE		2,000	0,64
101	VEVB.F10Z70.B	SCREW 1X70	D18	4,000	0,42
102	DAVB.F10Z80.B	NUT M10	H29	2,000	0,06
103	SIRM.104550.B	SILENTBLOCK 45/50 M/F	D84	14,000	6,82
104	VEVB.F10Z20.B	SCREW 10X20	D15	14,000	0,12
105	TNRE.002230.B	NYLON TUBE ROLL L295	D88	1,000	6,82
107	TURE.081212.B	NYLON TUBE ROLL		2,000	2,97
108	VEVB.F08Z25.B	SCREW 8x25	P19	5,000	0,12
109	SIRM.302008.B	SILENTBLOCK 30X20X8	P27	2,000	4,58
110	SPRE.000010.B	FR.BUMPER MIDDLE BRACKET	D58	2,000	22,82
111	SPRE.000011.B	FRONT BUMPER LAT.BRACKET	D54	2,000	22,82
113	SRRK20088306B	REGULATION SCREW SUPPORT	A99	3,000	2,55
114	CARE.MIN004.B	SHEATH CAP D6	A71	2,000	0,12
115	VTVB.F08Z50.B	BRACKET 8x50	A45	1,000	1,09
117	VBVB.F10Z100B	SCREW 10x100	D12	2,000	0,45
118	TURM.0TTG04.B	PIPE PEHD BLACK 2,4X3,2		3,000	1,15
119	DF13.00K022.B	SPACER 17X8	T47	2,000	0,30
120	PPRE.010450.B	PEDAL BRACKET	I39	1,000	5,52
121	TGRE.001060.B	RUBBER SPACER D45/10x35	I25	2,000	2,94
122	FNRM.NYL5207B	NYLON CLAMP	P2	6,000	0,06

ARTICLE LIST

123	FNRM.NYL5210B	NYLON CLAMP	D48	3,000	0,09
124	VBVB.F06Z20.B	SCREW 6X20	D13	6,000	0,06
125	VBVB.F10Z40.B	SCREW 10X40 ZN	M30	2,000	0,21
126	VEVB.F08Z16.B	SCREW 8X16	A136	2,000	0,15
127	VEVB.F08Z40.B	SCREW M8x40	F41	4,000	0,06
128	ROVB.F08Z15.B	WASHER 8x15x1	A181	2,000	0,03
129	VBVB.F06Z40.B	SCREW 6x40	A17	2,000	0,24
130	AFRK20026110B	RING	F43	1,000	6,58
131	GGRK40082700B	GRUB SCREW	B77	2,000	0,39
132	CURK000608ZZB	BEARING	I18	4,000	4,03
133	MORE.221811DB	PEDAL SPRING RIGHT	I27	1,000	2,97
134	MORE.221811SB	PEDAL SPRING LEFT	I28	1,000	2,97
135	BPRE.001010.B	BUSHING	I29	1,000	1,70
136	CARE.58DXNE.B	RIGHT BLACK SIDE BOX		1,000	30,61
137	CARE.58DXBL.B	RIGHT BLUE SIDE BOX		1,000	30,61
138	CARE.58DXBI.B	RIGHT WITHE SIDE BOX		1,000	30,61
139	CARE.58DXGI.B	RIGHT YELLOW SIDE BOX		1,000	30,61
140	CARE.58SXBI.B	LEFT WITHE SIDE BOX		1,000	27,88
141	CARE.58SXGL.B	LEFT YELLOW SIDE BOX		1,000	27,88
142	CARE.58SXNE.B	LEFT BLACK SIDE BOX		1,000	27,88
143	CARE.58SXBL.B	LEFT BLUE SIDE BOX		1,000	27,88
144	MPRK.0011BL.B	BLUE FRONT PANEL		1,000	21,94
145	MPRK.0011GL.B	YELLOW FRONT FEARING		1,000	21,94
146	MPRK.0011NE.B	BLACK FRONT PANEL		1,000	21,94
147	MPRK.0011RO.B	RED FRONT FEARING		1,000	21,94
148	MHMO.GX200C.A	HONDA GX200 ENGINE		1,000	964,67
150	PIRM.000012.B	PINION Z12 diam. 21mm	F39	1,000	19,67
151	SERK.SH00XLKB	PADDED SEAT XL		1,000	172,73
152	CORK10106900B	SPROCKET 30 Z24	M22	1,000	44,48
153	CORK10107300B	SPROKET 30 Z26	H3	1,000	44,48
154	CORK10107700B	SPROCKET 30 Z28	D74	1,000	44,48
155	CORK10108100B	SPROCKET 30 Z30	F37	1,000	44,48
156	DFRE.001400.B	BRAKE DISC	F11	1,000	46,67
157	ACRK.0011BA.B	WHITE SPOILER		1,000	38,15
158	ACRK.0011BL.B	BLU38,12			

Questo disegno è valido per il Kart DART2000 con matricola dal 01015 in poi  
 Ce dessin est valable pour Kart DART2000 avec numéro serie souverieur a 01015  
 This drawing is valable for Kart DART2000 with number lighter then 01015



PBRE-0102.DWG

RIF	CODICE	DESCRIZIONE	RIF	CODICE	DESCRIZIONE	RIF	CODICE	DESCRIZIONE
1	SERK.001010.B	SERBATOIO ESTRAIBILE L.B	10	ROVB.F06Z12.B	RONDELLA 6X12 ZN	H35	TARE.004010.B	TUBO RACCORDO
2	TBRK.00035300B	TUBAZIONE BENZINA 5X8M1	11	ROVB.F06Z18.B	RONDELLA 6X18 ZN	B61	ROFG.992085.B	RANELLE IN GOMMA 20X6X5
3	PORE.001010.B	PORTAGOMMA PRESA DEF.	12	VEVB.F06Z40.B	VITE TE 6X40 ZN	A124	DRRK.20016314B	DADO RACCORDO SERRATOIO
4	SPRE.001010.B	SUPPORTO POMPA BENZINA	13	CPRE.001010CB	COPERCHIO POMPA BENZINA	I35	ROPK.20036922B	ROSETTA FIBRA RACC. SERB.
5	PBRM.491922.B	POMPA BENZINA	14	SSRE.000010.B	SFIATO SERRATOIO	I34	FIRE.00K209.B	FILTRO BENZINA
6	DERE.00K208.B	DEVIATORE "Y" BENZINA	M31					
7	RARK.20095214B	RACCORDO SERRATOIO 2 V.	C31					
8	VEVB.F06Z25.B	VITE TE 6X25 ZN	T49					
9	DAVB.F06Z04.B	DADO AUT. 6MZN	D7					

COD SERK.001010CB DESCRIZIONE KIT SERRATOIO CENTRALE/H160 - 200

DATA 30/7/97

PAG1 PM6IDART2000.prm6l 1

ARTICLE LIST

ARTICLE : SERK.001010CB 8L FUEL TANK ASSY

CURRENCY : U.S.\$

ITEM	CODE	DESCRIPTION	QUANTITY	PRICE
1	SERK.001010.B	FUEL TANK 8L		
2	TBRK40033300B	PETROL PIPE 5X9	1,000	39,09
3	PDRE.001010.B	HOSE END T8	3,500	1,12
4	SPRE.001010.B	FUEL PUMP MOUNTING D90	1,000	2,18
5	PBRM.491922.B	FUEL PUMP M18	1,000	34,42
6	DERE.00K208.B	"Y" UNION D22	1,000	59,00
7	RARK20095214B	TANK CONNECTION M31	1,000	2,91
8	VEVB.F06Z25.B	SCREW 6X25 G3	1,000	5,67
9	DAVB.F06Z04.B	NUT 6M T49	2,000	0,06
10	ROVB.F06Z12.B	WASHER 6x12 D7	5,000	0,12
11	ROVB.F06Z18.B	WASHER 6x18 H35	6,000	0,06
12	VEVB.F06Z40.B	SCREW 6X40 B61	2,000	0,06
13	CPRE.001010CB	FUEL PUMP COVER A124	1,000	0,06
14	SSRE.000010.B	TANK BREATHER PIPE I34	1,000	47,58
16	RORG.992085.B	RUBBER WASHER 20x8x5 D29	1,000	4,91
17	DRRK20016314B	NUT 198	1,000	0,30
21	RORK20036922B	SEALING WASHER 199	1,000	0,91
23	FIRE.00K209.B	FUEL FILTER M32	2,000	0,30
			1,000	2,12

PARTYTOWN.COM



A R T I C L E   L I S T

---

ARTICLE : PMRE.00K395.B MECHANICAL BRAKE CALIPER I23 CURRENCY : U.S.\$

ITEM	CODE	DESCRIPTION	QUANTITY	PRICE
2	LFRE.0K398A.B	MECHANICAL BRAKE LEVER    D89	4,000	2,88
3	CGRE.00K400.B	SHEATH CYLINDER	4,000	1,33
4	VBVB.F06Z40.B	SCREW 6x40                    A17	2,000	0,24
5	CPRE.00K399.B	PISTON CYLINDER	2,000	2,55
6	PIRE.00K397.B	LITTLE PISTON                A170	2,000	2,91
7	VGRE.00K391.B	SCREW                            B37	4,000	1,09
8	MORE.00K390.B	SPRING                            B76	4,000	0,61
9	SPRE.00K396.B	MECHANICAL HALF CALIPER    F36	2,000	28,76
10	PFRE.0K183E.B	REAR BRAKE PAD                I36	2,000	8,45
11	LCRE.00K398.B	MEC.BRAKE LEVER ASSY	2,000	7,70
12	VBVB.F06Z45.B	SCREW TCE 6Mx45	2,000	0,27
13	SPRE.00K385.B	REAR BRAKE PUMP SPACER	8,000	0,48
14	DAVB.F06Z50.B	NUT M6                            A122	2,000	0,03

CARNY TOWN.COM

## MANDATORY MAINTENANCE AND REPAIR SCHEDULE DUCATI DART 2000 INDOOR KART

### **Daily Maintenance and Inspection**

Prior to use of a kart the following daily maintenance and inspection is required:

1. Oil inspection of motor and gearbox. If required, fill oil per Honda GSX160 engine manual specifications.
2. Tires/Wheels - Inspect all tires for wear and air pressure. Air pressure should be the same for all tires. Inspect wheels for cracks or damage.
3. Steering wheel/seat - Should be cleaned.
4. Kart - Cleaned of all oil, grease, fuel spills and marks. Clean all rubber and remove dirt from the kart surface areas. All scuffs and marks on bodywork are to be cleaned.

### **Daily Safety Checks**

1. Brakes - Inspect and test that they function normally.
2. Brake pedal/cable - Inspect for damage, wear or tearing. If necessary; replace.
3. Throttle pedal/cables - Inspect and if necessary, adjust for proper RPM limit.
4. Steering mechanism - Inspect, check function, adjust if necessary.
5. Bolts and fasteners - Tightly fasten all bolts and fasteners for:  
Steering mechanism \_\_\_\_\_  
Steering rods \_\_\_\_\_  
Tires/wheels \_\_\_\_\_  
Seat \_\_\_\_\_  
Pedals \_\_\_\_\_
6. Throttle stop on gas pedal - Check setting and adjust if necessary.
7. Rear axle - Inspected for smooth operation and vibration free.
8. Frame/bodywork - Inspect for cracks, damage, disforming.
9. Fuel tank - Inspect for damage, cleanliness, and security of cap.
10. Engine - Inspect exhaust, muffler and catalytic for proper attachment and security.

### **Kart Maintenance During Normal Operating Hours**

The following items should be inspected periodically during operations:

- Brakes and brake cables.
- Steering and steering rods.
- Gas tank and cap.
- Tires/wheels.
- General cleanliness.

Any damage or mechanical defects will immediately make the kart unusable. It must be returned to the garage for proper repair and maintenance.

### **Service engine per Honda GSX 160 manual**

Basic information:

- Oil - 4 cycle motor and gearbox oil. 15-40 weight change minimum of once per month.
- Air Filter - Check monthly. Replace after 6 months.
- Gasoline - Regular unleaded.
- Carburetor - Adjust per Honda GSX 160 manual.
- Motor chain tension- Maximum of 1/2" of slack.
- Chain - Inspect and lubricate once a week.

### **Refueling**

All refueling must be done in the refueling area away from the public. During normal operations the kart has a normal running time of 110 minutes. Fuel capacity and consumption should be checked daily prior to and following operations.