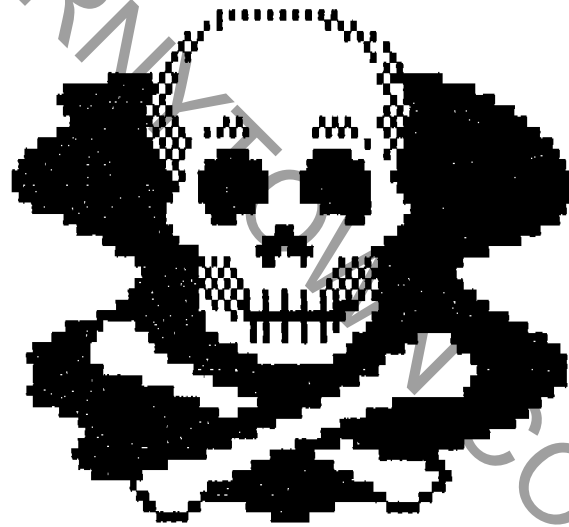


Reithaffer

MFG: HOLLINGSWORTH
NAME: CASTLE ELM STREET
TYPE: NON-KIDDIE

D2055

DARK RIDE OPERATION MANUAL



FOR:
CASTLE ON ELM
STREET

Lost World

DARK RIDE OPERATION MANUAL

TABLE OF CONTENTS:

1. Set-up-----Pg1
2. Safety Rules-----Pg3
3. Layout Drawing--Pg4
4. Photograph-----Pg5
5. Set-up Checklist-Pg6

CARNY TOWN.COM

SAFETY RULES AND PROCEDURES:

NO SMOKING NO FOOD OR DRINKS REMAIN IN SEATS

When the DARK RIDE is in operation, the operator must beware of his safety responsibilities. He must know the location of all safety devices on the ride and their operation. Some of them are outlined here.

1. **WARNING SIGNS**- Signs indicating the ride requirements must be properly displayed. Patrons **MUST** be made aware that there is no smoking or eating or drinking, and that they must remain in the cars at all times.
2. **FIRE EXTINGUISHER**- Must be operational and located in an area easily accessible to the operator.
3. **SMOKE DETECTORS**- Must be checked every day for proper operation.
4. **EMERGENCY LIGHTS**- Must be checked every day for proper operation.
5. **EVACUATION FLASHLIGHT**- Must be checked everyday for proper operation.
6. **EMERGENCY EXIT SIGNS**- Must be in place before operation of the ride.
7. **TRACK POWER KILL SWITCH**- must be checked daily.
8. **GENERAL CLEANLINESS**- The ride should be checked for any hazards every day. No flammable paints, liquids, etc. shall be stored in the ride.

Place three pieces of "PIE" bracing at each end of the trailer, the red to the front, the blue to the rear. Connect the long piece first between the back floor brace and one end floor brace. Connect the other pieces between them.

Carefully remove the locking bars at the front and rear of the trailer and crank down the end floors with the winches provided. When they have been fully lowered, raise the end wall and the side wall and pin them together with an "R" key. Align the pins at the trailer ends and pin them together with an "R" key also. Some adjustment may be necessary on the jackstands at this time.

Pulling out on the back floor panels, slowly let the back floor down with the power cables. After the floor is fully lowered, raise the back walls and swing in the end panels. They should line up closely, however, some jackstand adjustment is usually necessary at this time. Pin a couple of roof braces in place to hold the back wall up. Now place the "PIES" on each end and swing the doors on the endwall outward to enclose the "PIES" with walls. Put 5 bolts in each "PIE" to hold it to the trailer, and connect up the track on each "PIE".

Stretch the canvas over the back roof braces and tie it to the trailer. Then place any removable tricks in their respective locations, and connect their light wires. Install the divider curtains inside, and install any lights, flags, sound systems, or other finishing pieces outside. Run the cars through the ride and check that everything works properly. Make a last check of all structural parts, "R" keys, and cars before opening.

Set-up:

After finding your location, pull the ride in with a clearance of 14 feet from the end of the trailer to the end of the front. You should allow at least 8 feet for the front platform and steps, and should have a depth at least 15 feet from the passenger side of the trailer.

Making sure the trailer is level from side-to-side, dolly it down on a pad until it is level, or as level as possible, from end-to-end. Look in the possum belly for blocking, saving at least 2 large blocks to act as wheel chocks.

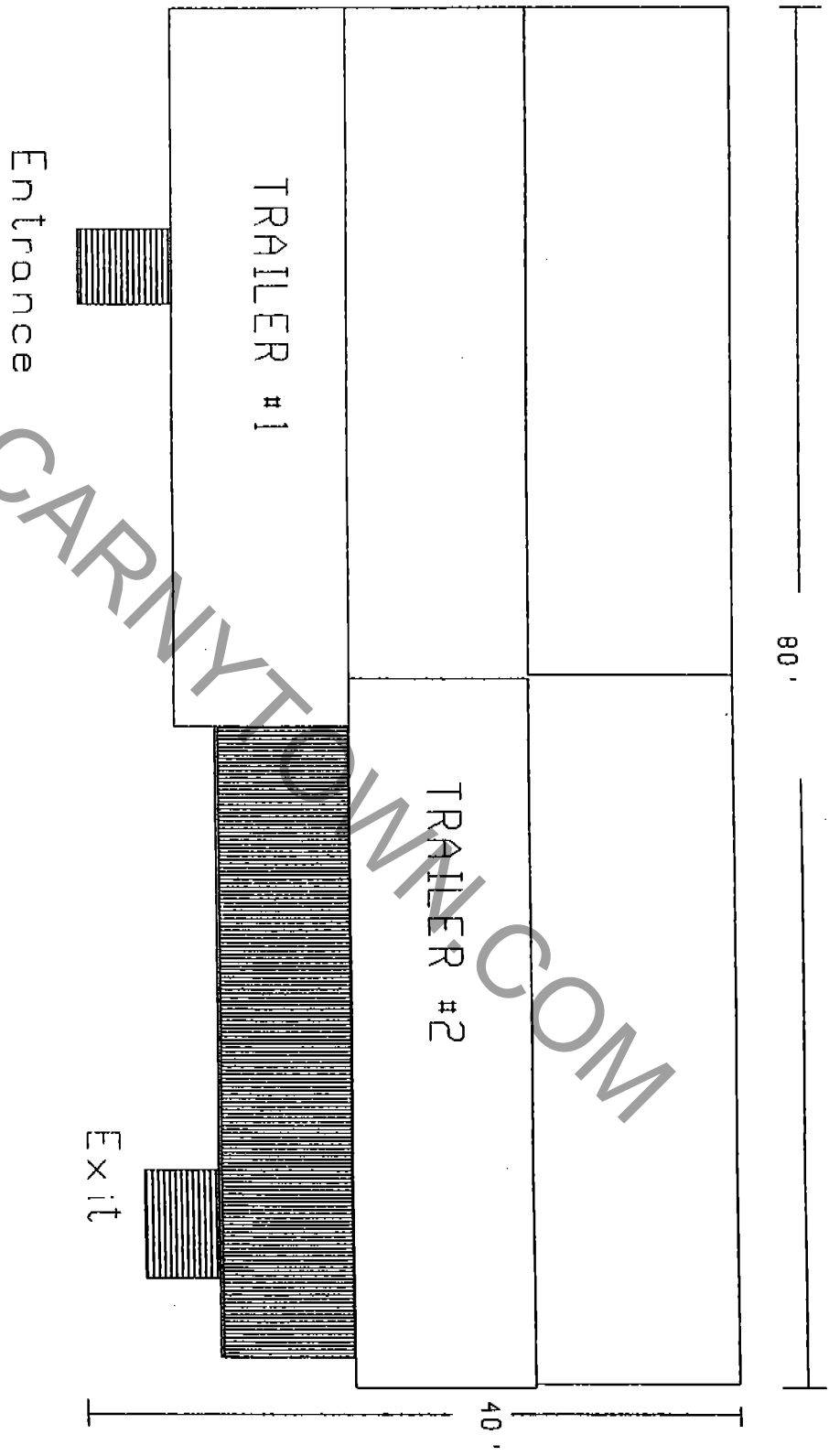
Swing the 2 front panels aside, and lock them in place with the long upright poles and braces. Remove the steps from the rack at the trailer rear, and lay them aside. Unpin the marquee and open it up, bracing it open with the temporary braces provided. Remove anything loaded on the bottom platform section such as the ladder, lights, other braces, etc. and unpin the bottom platform hold-down braces. Place the 10 platform braces in their respective holes and carefully swing the front platform over onto them. Remove the "R" key holding the lower panels, and let them swing down. Connect the steps to the loading platform at this time, and connect the fence railings. Push the marquee up and hold it with the 2 upright poles at either end. Place the center pole in position and, lining up the top pins, push it up to secure the center of the awning. Pin the 2 pole halves together and "R" key the top.

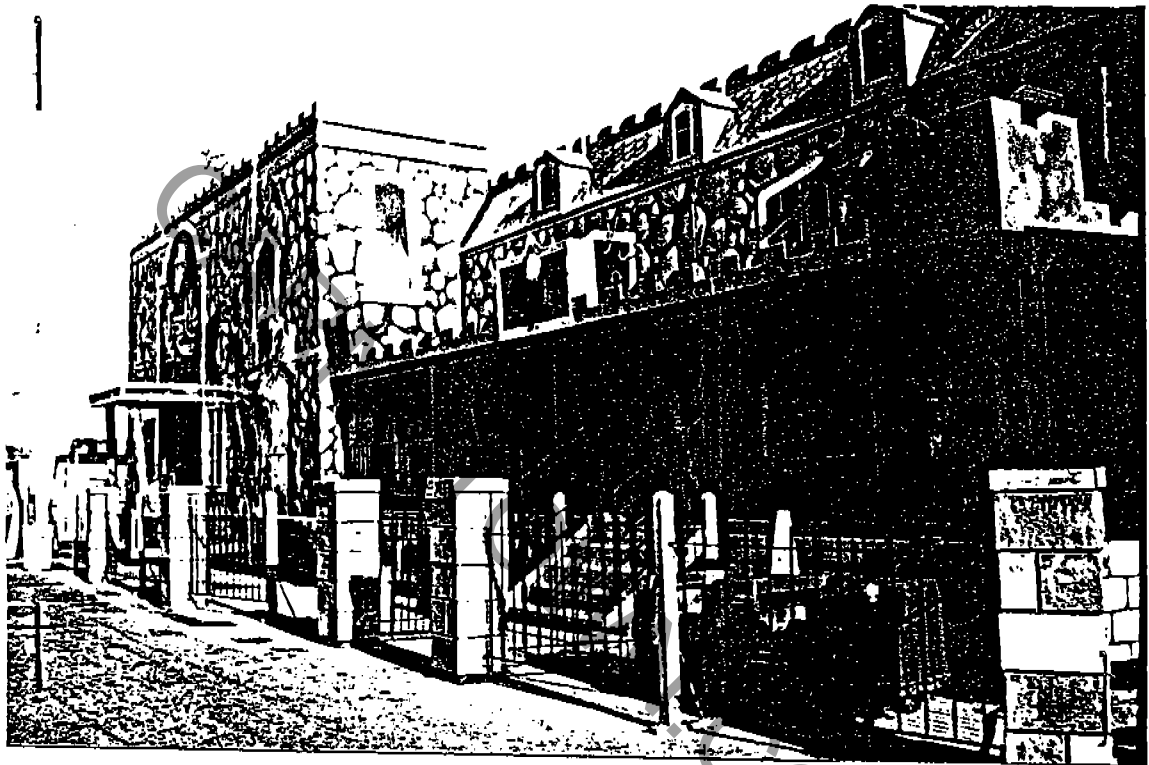
Going to the back of the ride, remove the possum belly doors and the jackstands, feet, and any other parts on top of the end "PIES". Then remove the pies and lay them at their respective ends, out of the way. Place one Jackstand at the front of the trailer, another at the rear. Place the other 5 along the back of the ride, in line with the floor brace brackets on the trailer. Unpin and swing open the 2 endwalls, and, placing a long floor brace on the end jackstand, align the floor brace with the bottom of the endwall. Do the same at the other end. Then, stretching a string between the two ends, adjust the other jackstands until they just touch the string. Next, align the 2 end floor braces at the rear of the trailer, using the front as a general guide. Do the same at the other end.

HOLLINGSWORTH 2 TRAILER DARK RIDE

By James Dillman

CARNYTY
OWNERS
COM





15. Bates Motel

DARK RIDE CHECKLIST

Location:	Date:	Inspector:		
Item inspected:	Good	Fair	Dangerous	
Pins, "R"keys, structural, etc.				
Electrical Connections, wires, etc.				
Cars, bolts, nuts, drags, motors, etc.				
Emergency lights, Fire Extinguishers, etc.				
Canvas, tie downs, tears, etc.				
Steps, floor, other areas of platform				
Tricks, working yes or no?				
Tools, available if needed?				
Spare parts, available?				
Sound System, working?				
Signs, warning and otherwise				
Area clean and neat?				

NOTE: Any item in the "DANGEROUS" column will be cause for ride closure!

THE ABOVE IS A SAMPLE OF THE CHECKLIST USED ON THE DARKRIDE AFTER INITIAL SET UP OF THE RIDE.

CASTLE ON ELM STREET SPECIFICATIONS

Mfg: Hollingsworth

Yr. Blt: 1987

Serial No. 61064

Power: 20kw - 120 amp single phase 220 volt

Space: 80 feet long by 40 feet deep by 26 feet high

Types of lighting: Incandescent, Flourescent, Quartz Halogen

Construction: Steel, Wood, Fiberglass, Aluminum

No. of cars : 7

Capacity (Each car): 4 people, 600 lbs

Trailer: 2 Trailers, 40 feet long, 8 feet wide and 13 feet high.

Weight: (Each trailer) 52,000 lbs