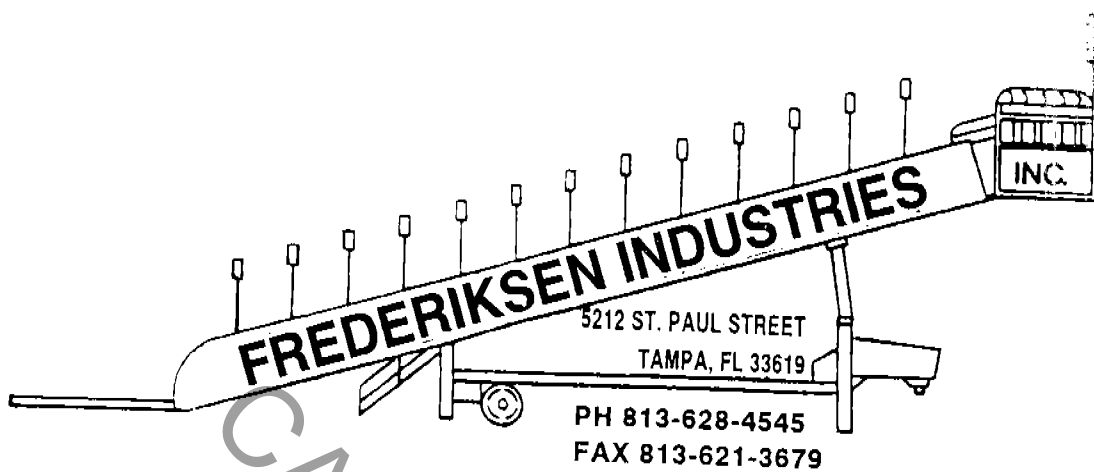


Man M  
7147



**OPERATIONS, MAINTENANCE  
AND INSTRUCTIONS  
MANUAL  
FOR THE  
SUPER FUN SLIDE**

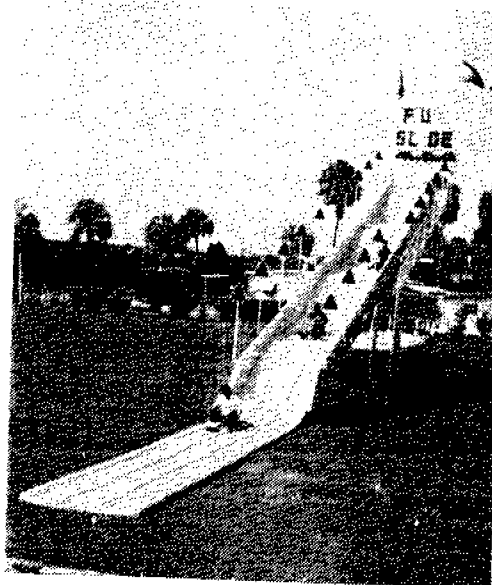


TABLE OF CONTENTS

	PAGE
INTRODUCTION.....	1
HYDRAULIC SYSTEM	
ELECTRIC HEATER SYSTEM	
SIGN CONTROL MODULE.....	2
SET UP OPERATION.....	3-4-5
OPERATIONAL PROCEDURES AND CHECK LIST.....	11
OPERATION OF THE DRY SLIDE.....	12
ILLUSTRATIONS:	
FIGURE 1-SKETCH OF SLIDE ASSEMBLED IN OPERATING POSITION.....	5
FIGURE 2-SKETCH OF SLIDE RACKED FOR TRANSPORTING....	7
FIGURE 3-SKETCH OF FRONT OF SLIDE ASSEMBLY.....	8
FIGURE 4-SKETCH OF ROLL-OUT SECTION MATING WITH FRONT SECTION.....	9
FIGURE 5-SKETCH OF GROUND SECTIONS AND PROPER PLACEMENT OF BLOCKING.....	10
FIGURE 6-SKETCH OF FENCING LAYOUT.....	13

## INTRODUCTION

The amusement attraction known as the SUPER FUN SLIDE, (figure 1), consists mainly of a trailer-mounted aluminum framework which supports a three-lane 90 foot long fiberglass sliding area. The top section is raised into position by a hydraulic cylinder and supported by two stanchions with turnbuckles. The center section is then rolled back and hoisted into position using two winches permanently affixed to the rear of the trailer, then bolted in place. The bottom two sections are then pinned together and fitted to the roll-out section.

### HYDRAULIC SYSTEM

The hydraulic system consists of a model #5W034-3 2.35 gpm pump and a 6K045F electric motor from Dayton. The control valve is a Gresen model 300 2-way valve. The fluid tank is a Dayton 10 gallon model with spin-on filter assembly and fitted with a magnetic plug near the bottom to retrieve filings.

The cylinder is a Hyco-Dana Corporation model #30347-63-120E three-stage ram.

The recommended oil to use is a mineral-based hydraulic oil.

The recommended change interval is every 100 hours or once yearly, whichever comes first.

### ELECTRIC HEATER SYSTEM

This slide is equipped with a heating system that is built in to the fiberglass. This system is virtually maintenance-free. It is designed for use only in high humidity type situations. It will not control moisture from rain, etc.

### SIGN CONTROL MODULE

This slide is equipped with a sign light control module from Zamperla. It is a 115 volt, 5 amp. fused, 3-channel chaser-flasher. The speed is adjustable.

## SET UP OPERATION

NOTE: The trailer must be blocked at all four corners and leveled from side to side and front to rear before beginning set up operations!

CAUTION: You must remove the 1 $\frac{1}{4}$ " pins from brackets at top of 4" square uprights at front of trailer before raising front section. Failure to do so will result in serious damage to the ride.

Set up procedure: First, install outriggers into brackets at sides of 4" uprights at front of trailer using 1 $\frac{1}{4}$ " by 6 $\frac{1}{2}$ " pins and R-keys. Install 1" turnbuckles from landing gear legs to outriggers. Then block underneath the outriggers and tighten turnbuckles. (Fig. 3) While front section is down, remove pins from sign and clamps from lights. Fold sign up and pin into position using two(2) 3/4" by 5 $\frac{1}{2}$ " pins and R-keys at bottom of sign legs. Next, fold lights up and pin into position using L-shaped 3/8" pins and R-keys inserted in light brackets.

Next, remove pins from rear bracket holding stanchions.

NOTE: do not allow stanchions to drag on trailer while raising.

After hooking up electrical power, turn main circuit breaker on and the circuit breaker for the hydraulic pump. Raise slide into position by use of the pump control valve and pin stanchions to bracket at top of 4" uprights at front of trailer, using 1 $\frac{1}{4}$ " by 3 $\frac{1}{4}$ " pins and R-keys.

(cont.)

Set up operation (cont.)

Cross the two 3/4" turnbuckles and pin to stanchions using two 5/8" by 3" galvanized pins and R-keys. Tighten turnbuckles evenly to take slack out of stanchions- just good and snug- DO NOT OVERTIGHTEN!! See (fig. 3).

Roll-out section:

Remove 1/2" U-bolt from front and two(2) 3/4" bolts from rear of roll-out section. Roll back 3-4 feet only-- then install the adjustable dollies into brackets at each side of rear of section using 3/8" bolts and nuts to secure in place.

NOTE: To facilitate ease of rolling it is advisable to place two pieces of plywood 1-2 feet wide and 8 feet long from approximately 14 feet to 22 feet behind trailer in line with dolly wheels.

Roll section back and down to ground until approximately one (1) foot at front is left on trailer.

NOTE: At this time it is easier to fold the lights up on this section, using the same procedure as the top section. Chock wheels if necessary to keep from rolling.

Fasten winch cables to eyebolts on lower front bar of roll-out section. Hoist up and move back as needed to meet the front section squarely-- THIS IS A MUST-----

NOTE: Use the two dollies to adjust up or down as needed to make the two frameworks meet squarely. (fig. 4)

(cont.)

Set up operation (cont.)

The lip of the fiberglass on the roll-out section must be underneath the fiberglass on the front section. Now install the two (2) 3/4" by 2½" bolts, lockwashers, and nuts into the mating brackets facing inward from the two frameworks. Tighten bolts securely.

Bottom (ground) sections:

Line the longer (curved) section up to the roll-out section and pin together with two (2) 3/4" by 3" pins and R-keys. The fiberglass lip of the ground section must be underneath that of the roll-out section.

CAUTION: Blocking must be placed across under the cross-braces where these two sections meet as a means of support.

The last section just fits together with the previous section by use of two square pockets where they meet.

NOTE: It might be necessary to use some small blocking at this point to level these sections if they do not meet just right.

Slide steps: The slide steps are fitted to the slide stairway by use of a 7/8" by 17½" pin and R-key. The steps will need to be angled out away from the roll-out section somewhat to make the pin holes line up.

Canopy: Raise the canopy up and pin into position using the proper L-shaped 3/8" pins and R-keys. Install safety bars around the canopy and pin together using the proper L-shaped 3/8" pins and R-keys.